

The background of the slide is an abstract, textured pattern of wavy, parallel lines in shades of blue and green, creating a sense of depth and movement. The lines are more densely packed and vibrant in some areas, while fading into a darker blue in others.

Signage for Capital Projects

R. MARK HARBESON, P.E.

TRAFFIC FIELD OPERATIONS MANAGER



I wonder if that pizza
from yesterday is still
in the break room.



Time to make Harbeson
sweat a bit!

(evil laugh)



Crap.
What did I do now?



This new power I
have is intoxicating!



Ugh.
Just what I needed.



Can't wait to see the
look on his face...



Please shoot me.



New phone, who dis?



You're a slacker.



That's how I've survived
the Winter Workshop for 19
years!



And now to twist the
knife...



@#%\$&!

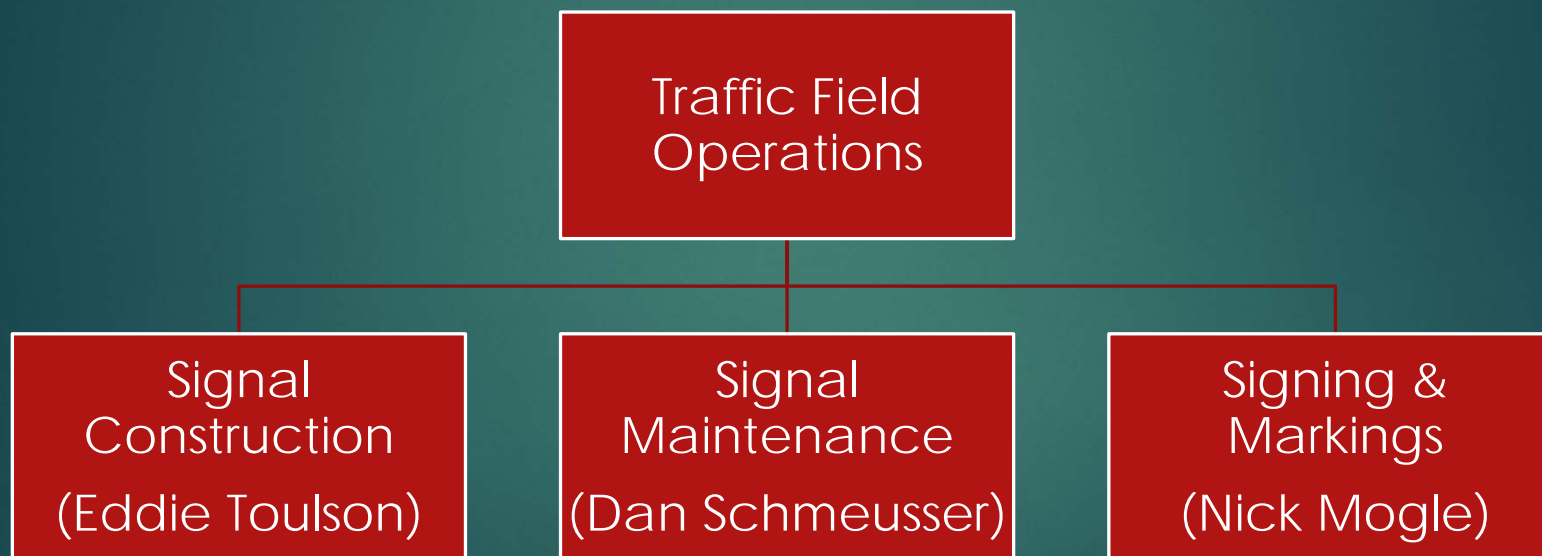


(maniacal laugh)

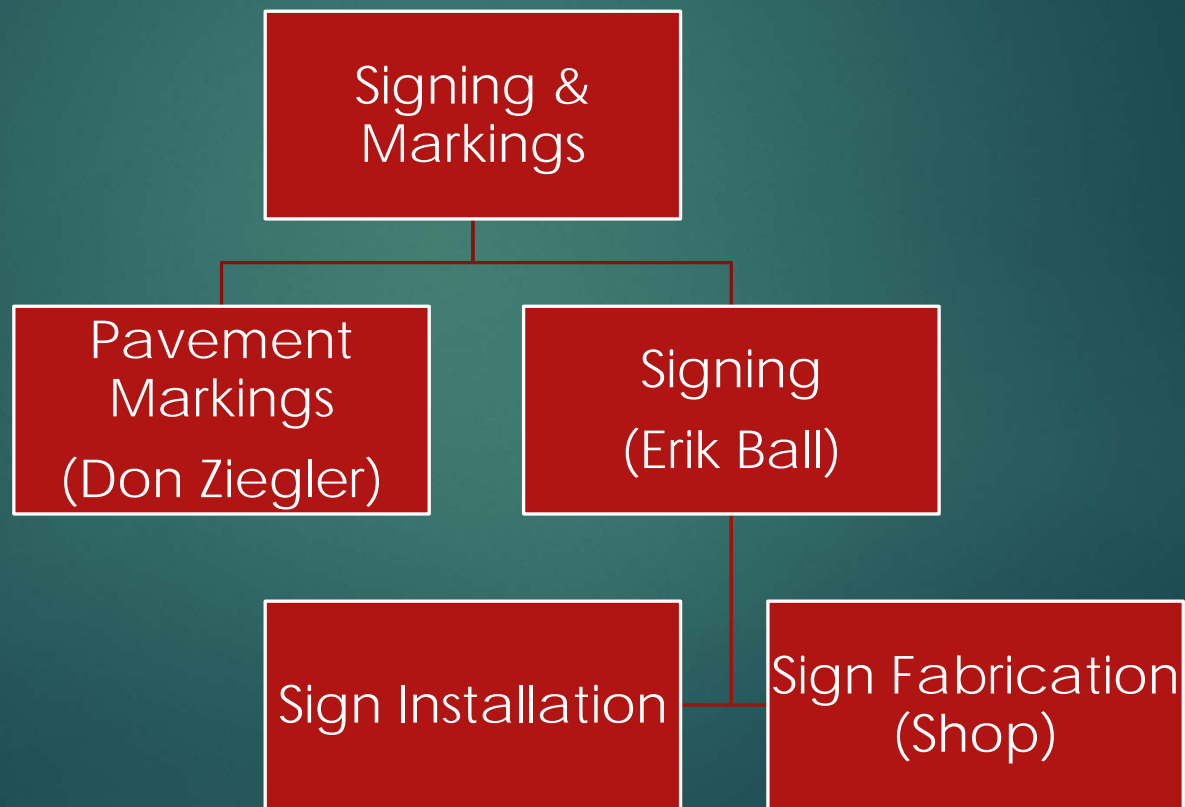


No, I'm not.

DeIDOT Traffic Field Operations



DeIDOT Signing



DeIDOT Sign Installation



There are approximately 300,000+ road signs in the State of Delaware



Sign installers work around the clock (on call, nighttime reflectivity inspections)



Installers are also tasked with Traffic Safety projects and signage requests from public entities

DeIDOT Sign Fabrication



Sign Shop consists of 8 employees



Responsible for fabrication of majority of Delaware highway signage (stock signs for maintenance and new signs for projects)



Also handle legislative/public requests, municipalities, scenic byways

(not)
DeIDOT
Signing



(not)
DeIDOT
Signing



(not)
DeIDOT
Signing



DeIDOT Signing



DeIDOT Signing



DeIDOT Signing

Current Process for Capital Project Signing

- Project contacts Sign Shop with sign order
- Lead time is generally 4-8 weeks for fabrication depending on the backlog
- Contractor picks up signs once ready, thorough check is done to make sure no signs are missing from the order

DeIDOT Signing

Common Issues

- 4-8 week lead time can cause project delays if sign order is not submitted early
- Contractors missing signs
- Sign Shop staff has to interpret plans to create sign order, track down designer with questions

DeIDOT Signing

New Process

- Signing will now be a normal bid item
- Signs are the responsibility of the project contractor
- Traffic's sign installation staff will assist with inspections for capital projects
- Sign staff is available as a resource for questions with layouts

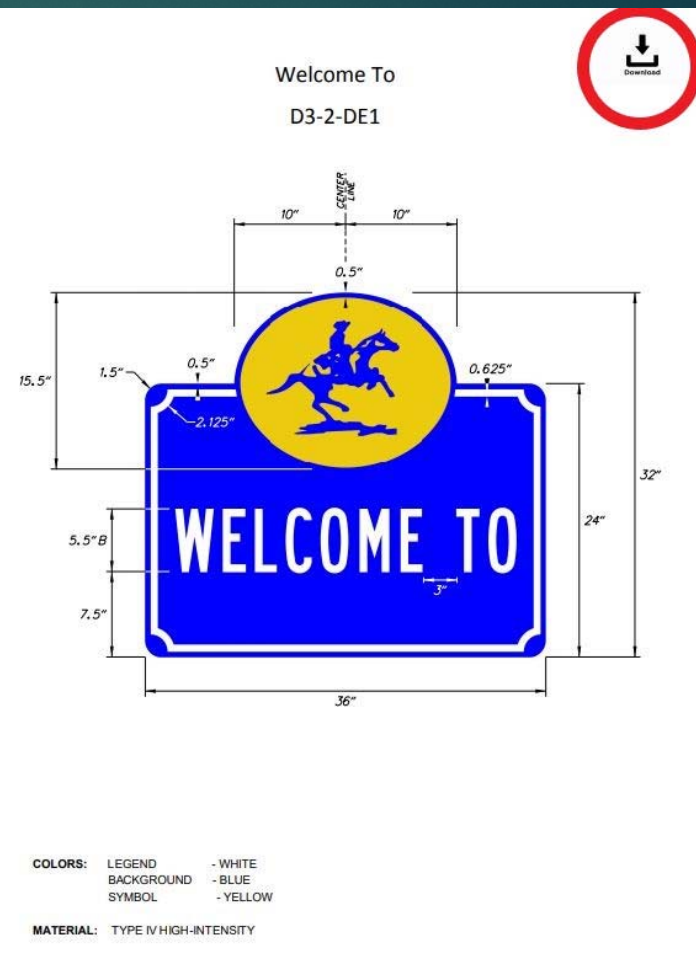
DeIDOT Signing

Delaware

DELWARE DEPARTMENT OF TRANSPORTATION

- 2011 Delaware MUTCD Revision 3 - Presentation
 - Cover
 - Introduction
 - Part 1 - General
 - Low Stress Bicycle Network Signs
 - Landscaping acknowledgement Signs
 - Sizing and Layout of Street Name Signs (D3-1)
 - Sizing and Layout of Advance Street Name Plaques (W16-8P and W16-8aP)
 - Layout and Sizing of Post-Mounted, Three-Line Destination Signs (D1-3)
 - Part 2 - Signs
 - Delaware Sign Book - 2018 Edition
 - Interim Guidance - DART Bus Stop Signage
 - Interim Guidance - Alternate Weight Limit Signage
 - State of Delaware Tourist Attractions Sign Program Policy
 - Policy - No Stopping Standing or Parking Signs
 - Interim Guidance - Alternate Electronic Vehicle Charging Station Symbol Sign
 - Interim Guidance - Overhead Street Signs Mounted on Traffic Signals
 - Policy - Radar Speed Signs
 - FHWA Interim Approval - Photo Enforced Sign
 - FHWA Termination of Cleanview Font for Highway Signs

DeIDOT Signing



DeIDOT Signing

New Process

- Sign schedule in Traffic Statement remains the same
 - Remember, it is no longer funded out of the Traffic phase but is now a bid item.
- Designers (Traffic/consultants) are drawing sign layouts (FLEXI software)
- Specs re-written for 2020 update
 - (Sections 818 – 826)

DeIDOT Signing

Benefits

- Cleans up responsibilities on capital projects
- Sign shop will be able to turn around orders from clients faster and keep up with maintenance needs
- Working towards better asset management/signing inventory



Please don't ask me
any questions.