

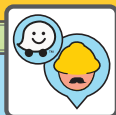
Features



DMV

Click the DMV icon to access a full range of features, including:

- Hours of Operation
- Wait Times
- Live Video Feeds
- DMV Practice Test
- Red Light Enforcement Payment



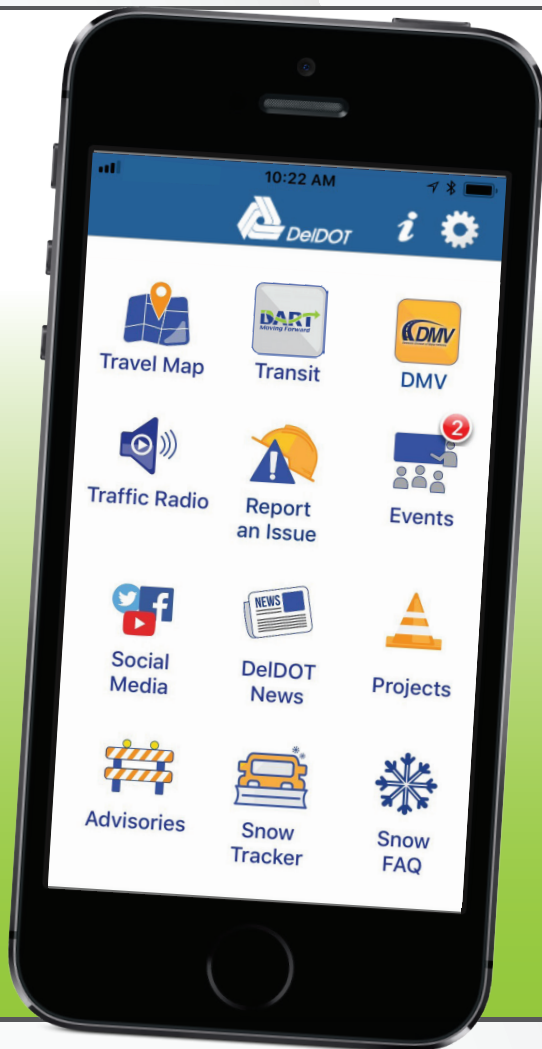
Waze™ Info

Through an established partnership, DeLDOT and Waze exchange traffic data. Participating “Wazers” can share reports on incidents and traffic slow-downs.



Events

Detailed information on Public Workshops and other DeLDOT events.



Report an Issue

Use the “Report an Issue” feature through the App to report a roadway condition (traffic, potholes, debris, streetlight outages, etc.). DeLDOT’s TMC can also be contacted 24/7:

- Dial #77 (in Delaware) from any cell phone;
- Call (302) 659-4600 or (800) 324-8379; or
- Email DelDOTTMC@state.de.us

For emergencies, contact 911.

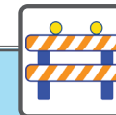


Projects

The DeLDOT App provides information on projects throughout the state.

Without your phone?

Access the same real-time traveler information from DeLDOT’s website (www.map.deldot.gov) and radio station (WTMC 1380 AM).



Advisories

Provides real-time notifications on construction, road closures, weather and other advisories in Delaware.



DeLDOT News

Advanced information on long-term traffic alerts.



Traffic Radio

With one touch, activate a live stream of DeLDOT’s traveler advisory radio, WTMC 1380 AM.

Hands-free access to traffic information.



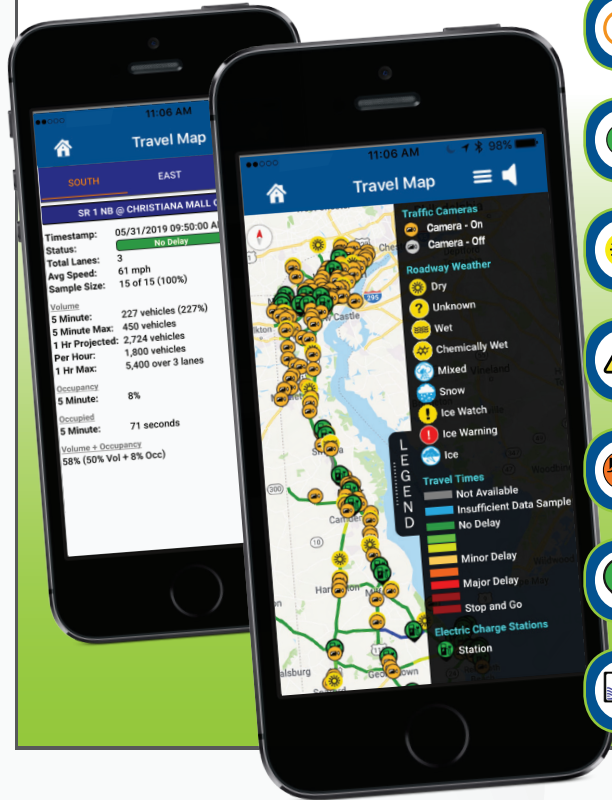
DART

Access the DART App for real-time transit information.

DeLDOT App

The DeLDOT App provides up-to-the-minute, reliable traffic data that comes directly from DeLDOT's 24/7 Transportation Management Center (TMC).

Use the interactive travel map to view:



- Live video from over 150 traffic cameras
- Travel times for the heaviest-traveled roadways
- 24-hour real-time travel advisories (incidents)
- Traffic flow
- Roadway weather
- Travel restrictions and closures
- Snow plow movement during snow events
- Electric vehicle charging stations
- Flood monitoring



Stay Connected



@DelawareDOT

Download the free DeLDOT App

