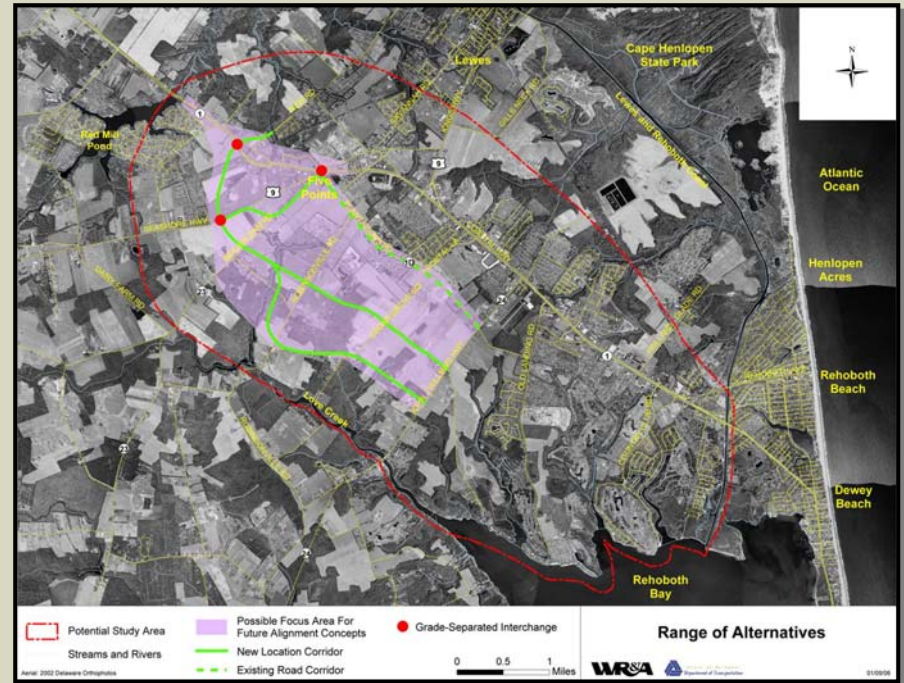


Memorandum of Agreement



*Implementation of Transportation Improvements Recommended By
The State Route 1 Land Use and Transportation Study
For a Controlled Access Parkway West of State Route 1*

January 2006

Project Background

- ◆ Delaware Department of Transportation and Sussex County Council Entered Into Agreement April 2001 to Jointly Develop State Route 1 Land Use and Transportation Study (SR 1 LUTS)
- ◆ SR 1 LUTS Study Completed in 2003
 - Results Indicated Significant Improvements Needed to Existing Transportation Network in Area West of SR 1 to Accommodate Anticipated Travel Demand



Project Background


- ◆ SR 1 LUTS Recommended Improvements Included Construction of Controlled Access, Parkway West of State Route 1
 - Reserve Rights-of-Way From Development
 - Continuous Cooperative Process



Summary of Planning Efforts

- ◆ Public Meeting – November 2004
 - Inform Public
 - Public Input on Scope of Project
 - www.deldot.net
(static/projects/western_parkway)
- ◆ Preliminary Traffic Forecasting To Determine Need
- ◆ Environmental Studies
- ◆ Coordination With Potential Developments To Protect Corridors

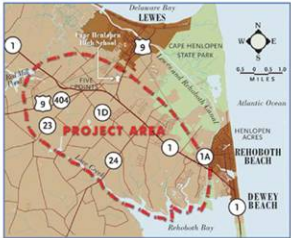
Planning Begins for the Western Parkway Project



A Public Workshop to kick off the Western Parkway project will be held at Cape Henlopen High School on November 22nd from 4:00-7:00 P.M.


This workshop will begin the project development process to initiate the Western Parkway project. This project will examine a full range of alternatives for providing a transportation corridor parallel and to the west of Route 1, from north of Five Points (Route 9) to south of Route 24.

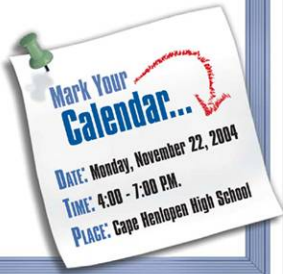
As part of the project, DeIDOT will consider existing alignments, new alignments, transit and bicycle/pedestrian opportunities. This project was one of the recommendations contained in the State Route 1 Land Use and Transportation Study which was a joint effort between the Delaware Department of Transportation and Sussex County. We encourage you to attend this workshop and give us your comments and ideas.



Displays will focus on:

- Project background
- Recommended study area
- Previously identified ideas
- Environmental issues





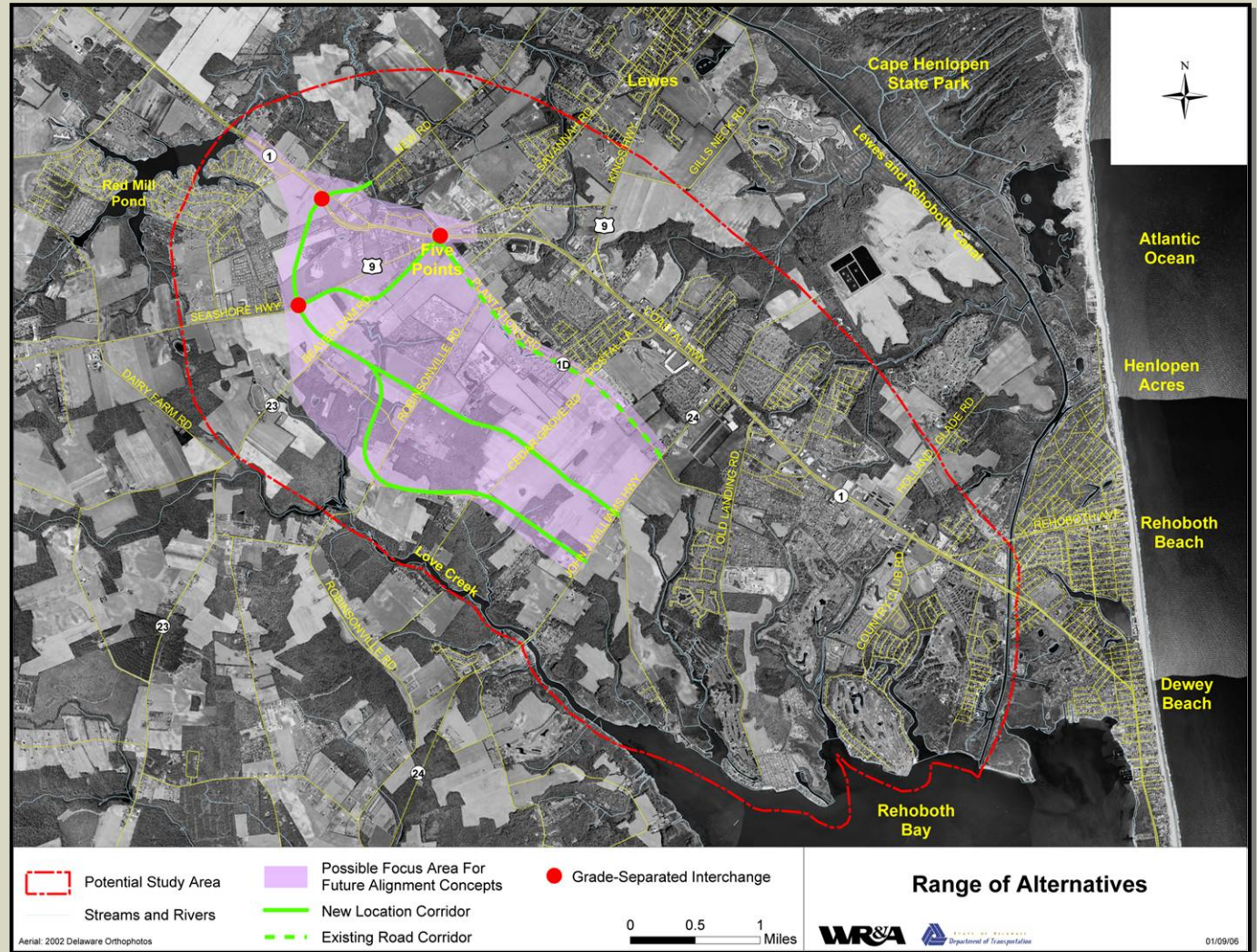
For More Information:
For more information call DeIDOT Public Relations at 1-800-652-5600 or visit our website at www.deldot.net

Purpose of Memorandum of Agreement

- ◆ Memorandum of Agreement Currently Proposed Between Delaware Department of Transportation and Sussex County is To Establish a Cooperative Process for Implementing Recommendations of SR 1 LUTS for Controlled Access Parkway West of State Route 1

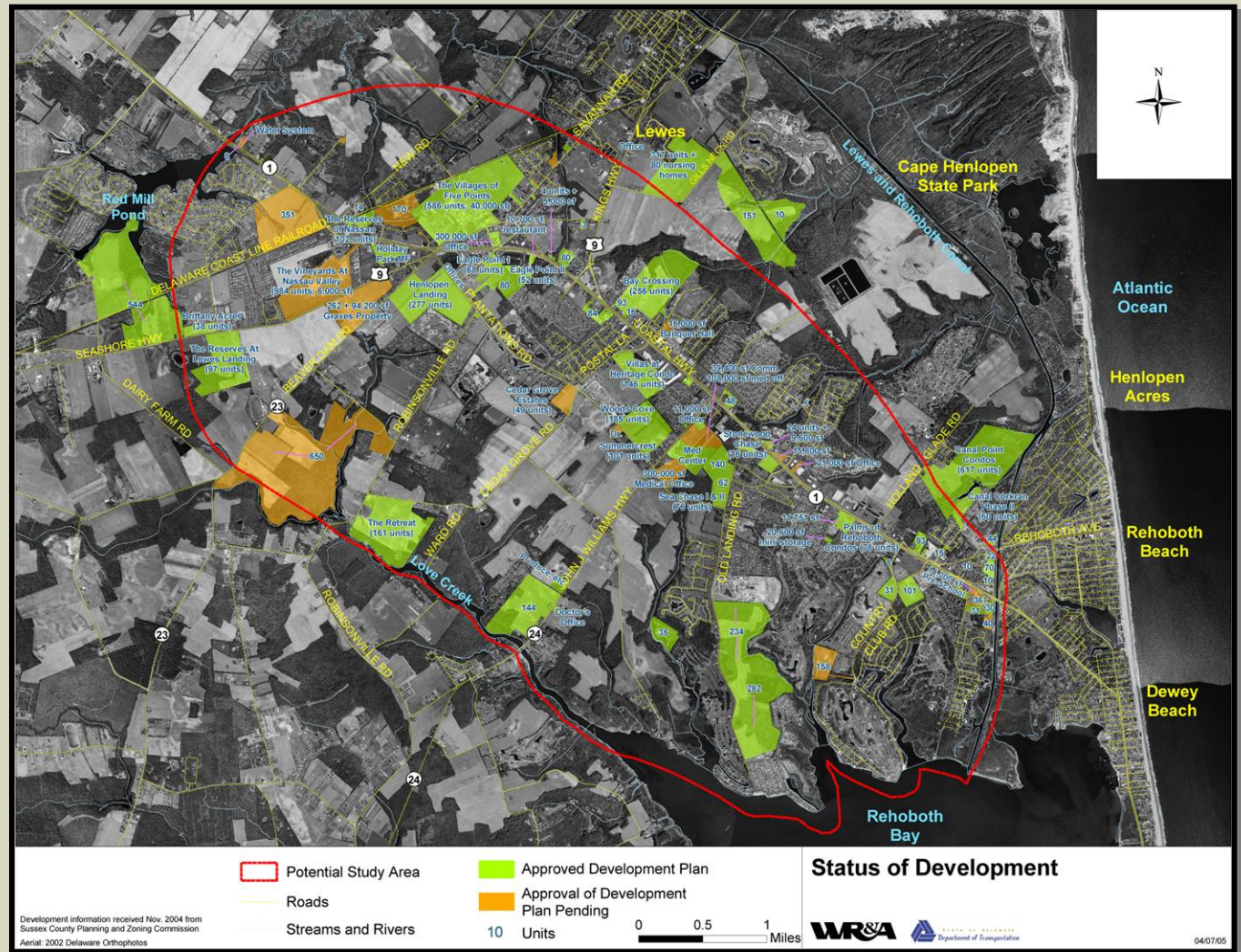
1: Team Work Through Planning Process

- ◆ Analysis of Transportation Alternatives
 - No-Build
 - Improvements to Existing Roadways
 - Construction of New Alignments



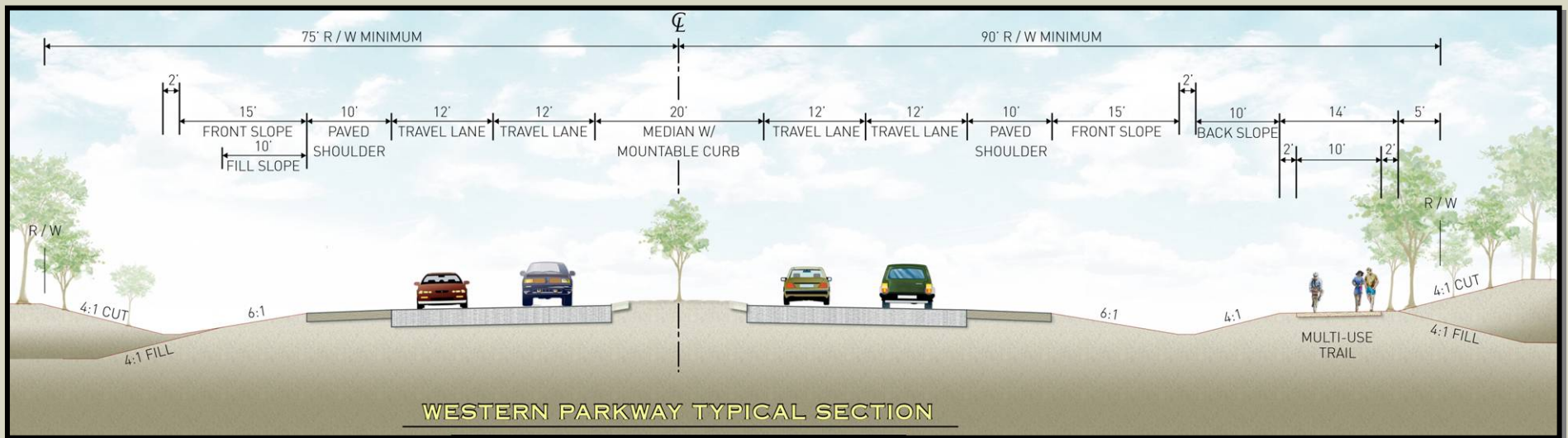
2: Protect Rights-of-Way

- Coordinate Efforts to Protect Rights-of-Way For Construction



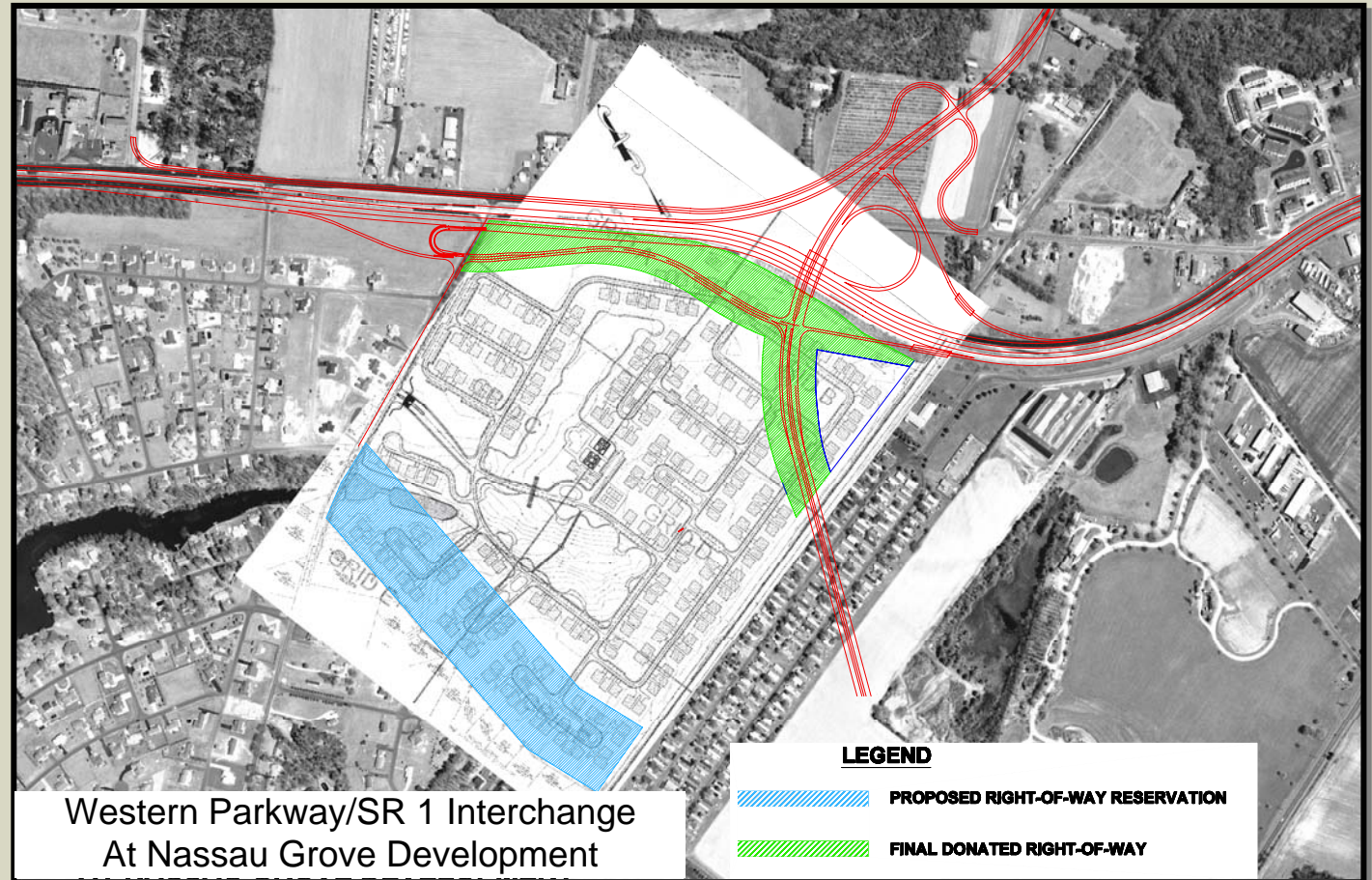
3: Inform Property Owners and Developers of The Project

- ◆ Ensure Property Owners and Developers of Proposed Developments Are Aware of and Reserve Land Identified for Project



4: Obtain Rights-of-Way

- ◆ Coordinate Joint Efforts with Property Owners and Developers to Obtain Right-of-Way Dedications or Acquire Land For Project Completion



5: Public Meetings

- ◆ Jointly Conduct Public Information/Input Meetings During Planning Phase of Western Parkway Project



6: Recommended Alternative

- ◆ Incorporate Recommended Alternatives From Western Parkway Cooperative Process
 - Sussex County Comprehensive Plan
 - Zoning
 - Other Land Development Approval Processes

7: Project Funding

- ◆ Recommend Funding For Western Parkway in Future Capital Transportation Programs
 - Engineering
 - Environmental Studies
 - Right-of-Way
 - Construction

8: Memorandum of Agreement Coordination

- ◆ Designate Through Secretary of Transportation and Sussex County Administrator Appropriate Staff Members
 - Responsible For Development of Procedures and Methods to Successfully Execute Provisions of MOA and Amendments or Additions

Memorandum of Agreement

*Implementation of Transportation Improvements Recommended By
The State Route 1 Land Use and Transportation Study
For a Controlled Access Parkway West of State Route 1*

January 2006