

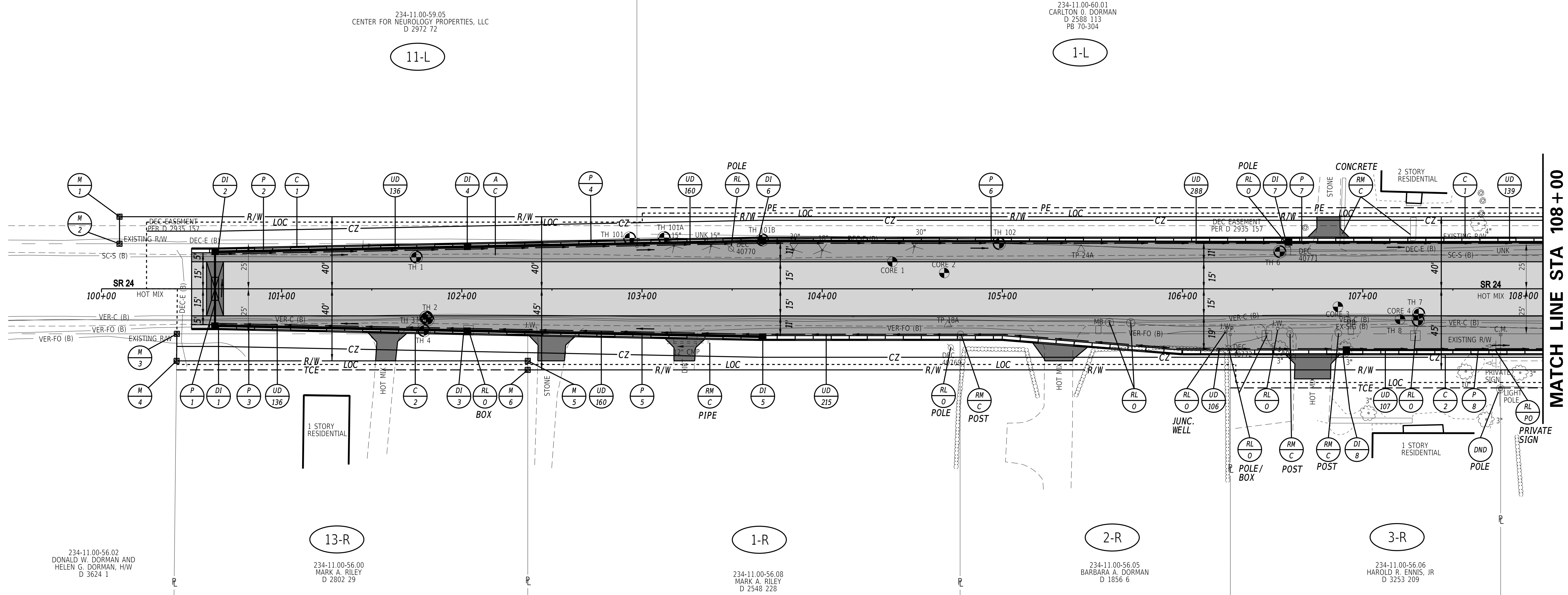
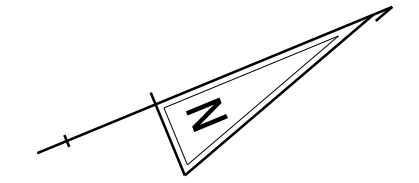
CURB SCHEDULE		
NO.	ITEM DESCRIPTION / TYPE	LENGTH
1	I.P.C.C. CURB AND GUTTER, TYPE 1-4	750
2	I.P.C.C. CURB AND GUTTER, TYPE 1-4	750

RIGHT-OF-WAY MONUMENT SCHEDULE					
NO.	TYPE	STATION	OFFSET	NORTHING	EASTING
1	CAPPED REBAR	100+10.00	40.00	245887.3935	722495.9345
2	CAPPED REBAR	100+10.00	25.00	245871.4467	722503.8786
3	CAPPED REBAR	100+41.83	25.00	245881.8374	722562.2348
4	CAPPED REBAR	100+41.67	40.00	245875.9727	722576.0417
5	CAPPED REBAR	102+36.58	40.00	246056.1950	722650.2803
6	CAPPED REBAR	102+36.58	45.00	246054.2906	722654.9034

DRAINAGE PIPE SCHEDULE						
NO.	SIZE / TYPE	CLASS	LENGTH	SLOPE	INVERT EL.	DIS. EL.
1	14" x 23" RCP	IV	40.00	0.0030	17.94	17.82
2	18" RCP	IV	136.00	0.0030	17.62	17.21
3	15" RCP	IV	136.00	0.0140	20.04	18.14
4	21" RCP	IV	160.00	0.0030	17.01	16.53
5	15" RCP	IV	160.00	0.0100	21.85	20.24
6	21" RCP	IV	288.00	0.0030	16.33	15.47
7	21" RCP	IV	200.00	0.0030	15.27	14.67
8	15" RCP	IV	168.00	0.0149	22.01	19.50

DRAINAGE INLET SCHEDULE						
NO.	STATION	OFFSET	BOX SIZE	GRATE	T.G. EL.	INV. EL.
1	100+62.96	*	48" x 30"	1	**	17.94
2	100+63.00	*	48" x 30"	1	**	17.62
3	102+17.84	*	48" x 30"	1	**	20.04
4	102+67.88	*	48" x 30"	1	**	17.01
5	102+92.66	*	48" x 30"	1	**	21.85
6	104+23.84	*	48" x 48"	1	**	16.33
7	105+04.46	*	48" x 48"	1	**	15.27
8	105+94.84	*	34" x 24"	1	**	22.01

*MATCH CURB FLOWLINE OFFSET
**MATCH CURB FLOWLINE ELEVATION

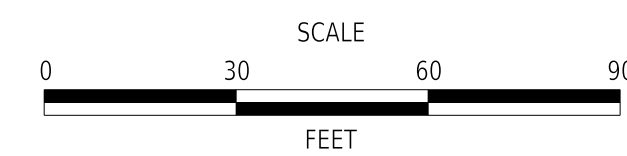


DISCLAIMER:
THIS EXAMPLE PLAN SET IS INTENDED TO BE A GUIDELINE FOR PREPARING A SET OF PLANS AND BASIC GUIDANCE FOR THE GENERAL APPEARANCE OF A SET OF PLANS. IT IS NOT INTENDED TO BE A SET OF CADD STANDARDS OR TO PROVIDE DESIGN GUIDANCE. PLEASE REFER TO THE DESIGN RESOURCE CENTER (DRC) FOR THE LATEST CADD UPDATES AND VARIOUS OTHER DOCUMENTS FOR DESIGN GUIDANCE.

ROADWAY CORE SCHEDULE				
NO.	STATION	OFFSET	DESCRIPTION	
1	104+38.93	-15.00	7.5" HMA / 1" ST	
2	104+67.70	-8.79	14.5" HMA / 6" FILL	
3	106+86.22	9.95	8" HMA / 8" PCC	
4	107+20.70	16.97	8" HMA	

UTILITY TEST HOLE SCHEDULE						
NO.	UTILITY	STATION	OFFSET	GROUND EL.	COVER	O.D. & MATERIAL
1	SC-S	101+74.69	-17.58	22.49	8.83	20" PLASTIC
2A	VER-C	101+80.40	-15.69	22.84	2.41	2.5" CABLE
2B	VER-C	101+80.40	-15.69	22.84	3.17	2" CABLE
2C	VER-C	101+81.15	-17.02	22.78	2.79	3" CABLE
3	VER-C	101+80.00	-16.02	22.77	2.67	1" CABLE
4	VER-FO	101+78.53	23.16	23.67	1.48	2.5" PVC
6A	DEC-E	106+53.95	20.59	26.91	-	PROBED 15'
6B	UNKNOWN	106+53.95	20.59	26.91	2.48	1" CABLE
7	UNKNOWN	107+31.04	13.83	25.47	0.86	CONCRETE
8	DELDOT	107+30.69	17.46	25.21	2.10	2" METAL
101	DEC-E	102+93.11	-28.08	23.59	4.36	(3) 6" CONDUIT
101A	DEC-E	103+12.29	-28.35	23.57	4.55	(2) 3" CAB & (2) 6" COND
101B	DEC-E	103+93.96	-27.18	24.10	9.17	(2) 3" CAB & (2) 6" COND
102	DEC-E	104+98.20	-25.11	26.75	-	PROBED 23'

ADDENDA / REVISIONS



HSIP SC, SR24 AT CAMP ARROW HEAD ROAD AND SR24 AT ANGOLA ROAD

CONTRACT	BRIDGE NO.	N/A
T201200902	DESIGNED BY:	W. NAUMAN
COUNTY	CHECKED BY:	C. ESHAM
SUSSEX		

CONSTRUCTION PLAN

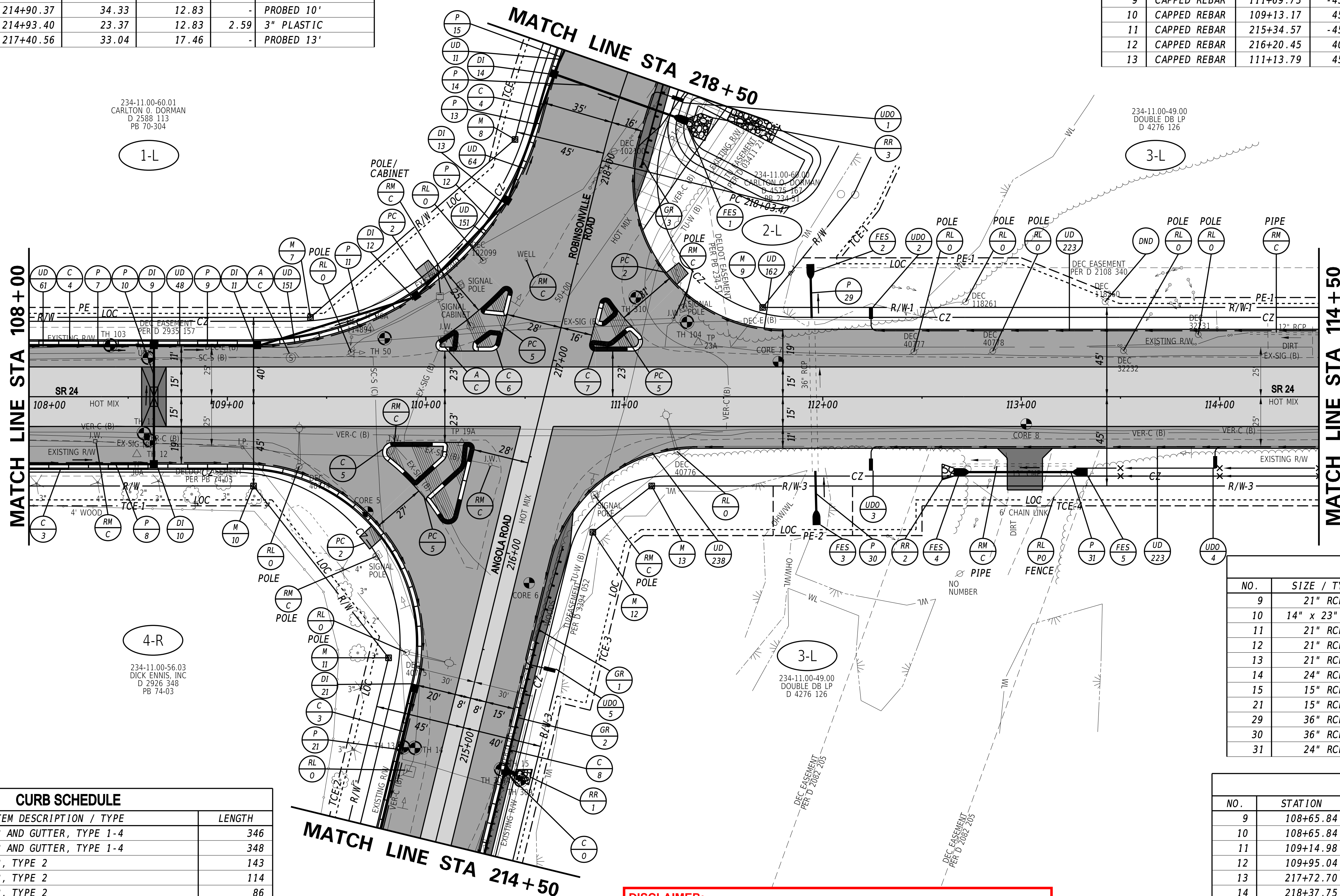
CP-01
SECTION
PD
SHEET NO.
14

UTILITY TEST HOLE SCHEDULE						
NO.	UTILITY	STATION	OFFSET	GROUND EL.	COVER	O.D. & MATERIAL
10	SC-S	108+60.08	-19.62	23.04	12.27	20" PLASTIC
11	VER-C	108+57.94	18.41	22.98	2.89	2.5" CABLE
12	VER-C	108+60.87	21.96	22.74	3.04	1" CABLE
13A	UNKNOWN	214+92.59	-27.06	13.93	2.72	1.5" CABLE
13B	SC-S	214+92.59	-27.06	13.93	-	PROBED 17'
14	VER-C	214+93.57	-21.30	13.17	2.78	1" CABLE
15	TU-W	214+91.96	32.43	12.83	-	PROBED 15'
50	DEC-E	109+79.25	-29.49	21.12	-	PROBED 15'
103	DEC-E	108+40.91	-25.97	24.05	-	PROBED 16'
104	DEC-E	111+31.57	-37.61	16.55	-	PROBED 16'
309	TU-W	214+90.37	34.33	12.83	-	PROBED 10'
309A	VER-C	214+93.40	23.37	12.83	2.59	3" PLASTIC
310	TU-W	217+40.56	33.04	17.46	-	PROBED 13'

ROADWAY CORE SCHEDULE				
NO.	STATION	OFFSET	DESCRIPTION	
5	109+70.23	60.00	6" HMA / 1" ST	
6	215+88.01	14.89	13" HMA	
7	111+77.63	-17.64	8" HMA	
8	113+02.52	13.77	6.25" HMA	

GUARDRAIL SCHEDULE				
NO.	ITEM DESCRIPTION / TYPE	BEGIN STA.	OFFSET	LENGTH
1	GUARDRAIL END TREATMENT, TYPE 1-31	216+09.82	27.00	50.00
2	GALVANIZED STEEL BEAM, TYPE 1-31	214+50.00	25.00	110.00
3	GUARDRAIL END TREATMENT, TYPE 1-31	218+04.90	20.00	50.00

RIGHT-OF-WAY MONUMENT SCHEDULE					
NO.	TYPE	STATION	OFFSET	NORTHING	EASTING
7	CAPPED REBAR	109+41.86	-45.00	246738.7775	722844.9335
8	CAPPED REBAR	218+03.47	-45.00	246868.2077	722801.2933
9	CAPPED REBAR	111+69.73	-45.00	246951.3764	722927.1013
10	CAPPED REBAR	109+13.17	45.00	246679.8812	722912.6016
11	CAPPED REBAR	215+34.57	-45.00	246709.8014	723018.5859
12	CAPPED REBAR	216+20.45	40.00	246829.0818	722999.2557
13	CAPPED REBAR	111+13.79	45.00	246865.3771	722989.0125



UNDERDRAIN OUTLETS		
NO.	LENGTH	DIS. EL.
1	4.00	12.00
2	4.00	13.90
3	4.00	14.32
4	4.00	15.12
5	4.00	13.08

RIPRAP SCHEDULE		
NO.	TYPE	AREA (SY)
1	R-4	5.00
2	R-4	5.00
3	R-4	13.00

FLARED END SECTION SCHEDULE			
NO.	SIZE / TYPE	SLOPE	SAFETY GRATE
1	24" RCP	0.0067	NO
2	36" RCP	0.0030	NO
3	36" RCP	0.0030	NO
4	24" RCP	0.0030	NO
5	24" RCP	0.0030	NO

DRAINAGE PIPE SCHEDULE						
NO.	SIZE / TYPE	CLASS	LENGTH	SLOPE	INVERT EL.	DIS. EL.
9	21" RCP	IV	48.00	0.0087	14.47	14.05
10	14" x 23" RCP	IV	56.00	0.0050	19.30	19.02
11	21" RCP	IV	80.00	0.0087	13.85	13.15
12	21" RCP	IV	64.00	0.0087	12.95	12.39
13	21" RCP	IV	64.00	0.0087	12.19	11.63
14	24" RCP	IV	64.00	0.0067	11.43	11.00
15	15" RCP	IV	136.00	0.0030	12.04	11.63
21	15" RCP	IV	216.00	0.0254	11.10	5.61
29	36" RCP	IV	20.00	0.0010	4.68	4.66
30	36" RCP	IV	20.00	0.0010	4.78	4.76
31	24" RCP	IV	56.00	0.0030	15.03	14.86

DRAINAGE INLET SCHEDULE						
NO.	STATION	OFFSET	BOX SIZE	GRATE	T.G. EL.	INV. EL.
9	108+65.84	*	48" x 48"	1	**	14.47
10	108+65.84	*	48" x 48"	1	**	19.30
11	109+14.98	*	48" x 48"	1	**	13.85
12	109+95.04	*	48" x 48"	1	**	12.95
13	217+72.70	*	48" x 48"	1	**	12.19
14	218+37.75	*	48" x 48"	1	**	11.43
21	215+22.59	*	48" x 30"	4	**	11.10

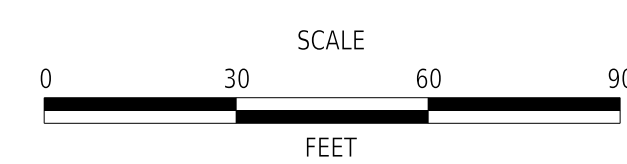
CURB SCHEDULE		
NO.	ITEM DESCRIPTION / TYPE	LENGTH
3	I.P.C.C. CURB AND GUTTER, TYPE 1-4	346
4	I.P.C.C. CURB AND GUTTER, TYPE 1-4	348
5	**P.C.C. CURB, TYPE 2	143
6	**P.C.C. CURB, TYPE 2	114
7	**P.C.C. CURB, TYPE 2	86
8	*I.P.C.C. CURB AND GUTTER, TYPE 1-4	110

* SEE STANDARD CONSTRUCTION DETAILS FOR DEPRESSED CURB REQUIREMENTS WITHIN THE LIMITS OF THE GUARDRAIL END TREATMENTS.
 ** THE COST FOR CONSTRUCTING THIS CURB IS INCIDENTAL TO ITEM 702000 - TRIANGULAR CHANNELIZING ISLANDS

DISCLAIMER:
 THIS EXAMPLE PLAN SET IS INTENDED TO BE A GUIDELINE FOR PREPARING A SET OF PLANS AND BASIC GUIDANCE FOR THE GENERAL APPEARANCE OF A SET OF PLANS. IT IS NOT INTENDED TO BE A SET OF CADD STANDARDS OR TO PROVIDE DESIGN GUIDANCE. PLEASE REFER TO THE DESIGN RESOURCE CENTER (DRC) FOR THE LATEST CADD UPDATES AND VARIOUS OTHER DOCUMENTS FOR DESIGN GUIDANCE.

* MATCH CURB FLOWLINE OFFSET
 ** MATCH CURB FLOWLINE ELEVATION

ADDENDA / REVISIONS



HSIP SC, SR24 AT CAMP ARROW HEAD ROAD AND SR24 AT ANGOLA ROAD

CONTRACT	BRIDGE NO.	N/A
T201200902	DESIGNED BY:	W. NAUMAN
COUNTY	CHECKED BY:	C. ESHAM
SUSSEX		

CONSTRUCTION PLAN

CP-02
 SECTION
 PD
 SHEET NO.
 15

DRAINAGE PIPE SCHEDULE						
NO.	SIZE / TYPE	CLASS	LENGTH	SLOPE	INVERT EL.	DIS. EL.
32	15" RCP	IV	64.00	0.0026	15.48	15.31
33	15" RCP	IV	24.00	0.0048	16.35	16.23

ROADWAY CORE SCHEDULE			
NO.	STATION	OFFSET	DESCRIPTION
9	115+68.45	-17.09	6.5" HMA
10	115+45.83	9.16	15.5" HMA

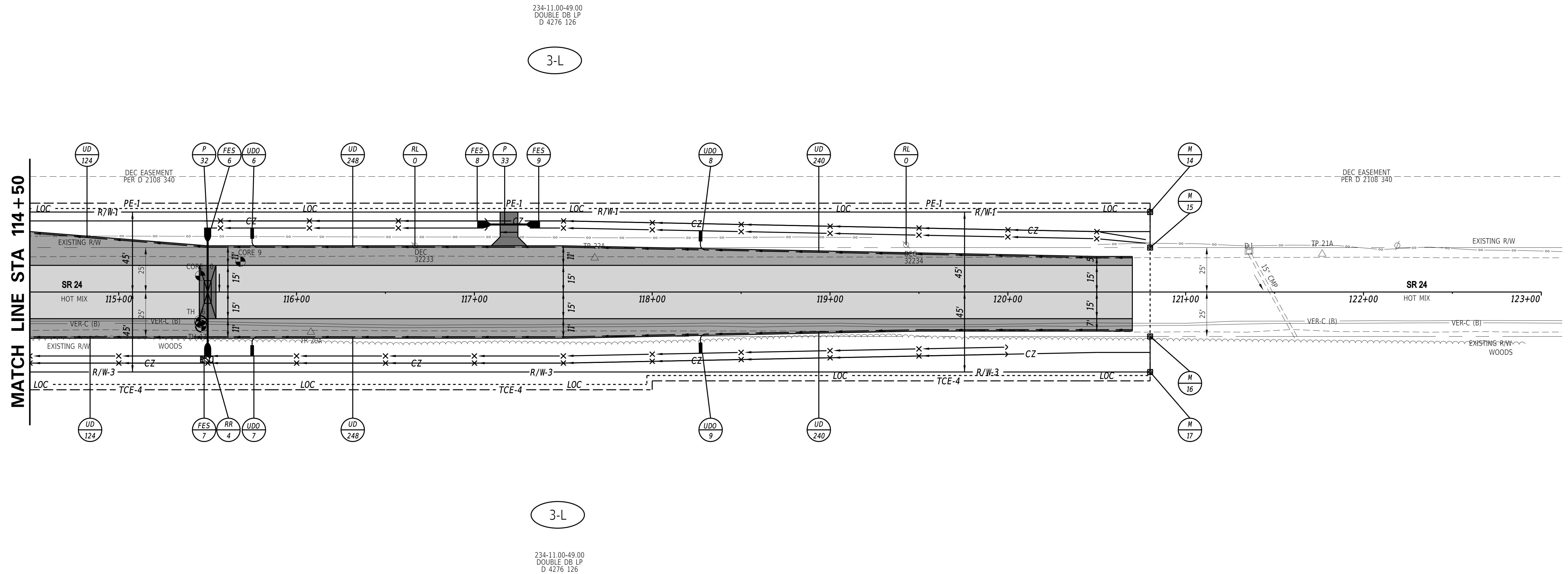
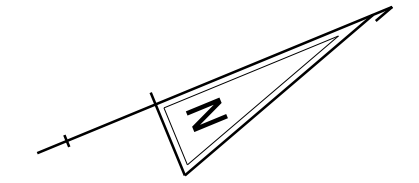
UTILITY TEST HOLE SCHEDULE						
NO.	UTILITY	STATION	OFFSET	GROUND EL.	COVER	O.D. & MATERIAL
16	VER-C	115+46.46	16.73	18.11	2.79	3" CABLE
17	VER-C	115+46.09	19.24	17.97	2.24	1" CABLE

RIGHT-OF-WAY MONUMENT SCHEDULE					
NO.	TYPE	STATION	OFFSET	NORTHING	EASTING
14	CAPPED REBAR	120+80.00	-45.00	246972.8655	722962.1275
15	CAPPED REBAR	120+80.00	-25.00	247785.4204	723292.2977
16	CAPPED REBAR	120+80.00	40.00	247760.6633	723352.3983
17	CAPPED REBAR	120+80.00	25.00	247758.7589	723357.0214

FLARED END SECTION SCHEDULE			
NO.	SIZE / TYPE	SLOPE	SAFETY GRATE
6	15" RCP	0.0026	NO
7	15" RCP	0.0026	NO
8	15" RCP	0.0032	NO
9	15" RCP	0.0032	NO

UNDERDRAIN OUTLETS		
NO.	LENGTH	DIS. EL.
6	4.00	15.60
7	4.00	15.41
8	4.00	16.79
9	4.00	16.47

RIPRAP SCHEDULE		
NO.	TYPE	AREA (SY)
4	R-4	5.00



DISCLAIMER:
 THIS EXAMPLE PLAN SET IS INTENDED TO BE A GUIDELINE FOR PREPARING A SET OF PLANS AND BASIC GUIDANCE FOR THE GENERAL APPEARANCE OF A SET OF PLANS. IT IS NOT INTENDED TO BE A SET OF CADD STANDARDS OR TO PROVIDE DESIGN GUIDANCE. PLEASE REFER TO THE DESIGN RESOURCE CENTER (DRC) FOR THE LATEST CADD UPDATES AND VARIOUS OTHER DOCUMENTS FOR DESIGN GUIDANCE.

31-MAR-2020 07:57 \\DOT\F08\Cadd\Active_Designs\SUSSEX\024\road\T2012009021\Plans\MODEL PLANS ONLY\CP 02.dgn

ADDENDA / REVISIONS 	SCALE FEET	HSIP SC, SR24 AT CAMP ARROW HEAD ROAD AND SR24 AT ANGOLA ROAD	<table border="1" style="width: 100%; border-collapse: collapse;"> <tr> <td>CONTRACT</td> <td>BRIDGE NO.</td> <td style="text-align: center;">N/A</td> </tr> <tr> <td>T201200902</td> <td>DESIGNED BY:</td> <td>W. NAUMAN</td> </tr> <tr> <td>COUNTY</td> <td>CHECKED BY:</td> <td>C. ESHAM</td> </tr> <tr> <td>SUSSEX</td> <td></td> <td></td> </tr> </table>	CONTRACT	BRIDGE NO.	N/A	T201200902	DESIGNED BY:	W. NAUMAN	COUNTY	CHECKED BY:	C. ESHAM	SUSSEX			CONSTRUCTION PLAN	<table border="1" style="width: 100%; border-collapse: collapse;"> <tr> <td style="text-align: center;">CP-03</td> </tr> <tr> <td style="text-align: center;">SECTION</td> </tr> <tr> <td style="text-align: center;">PD</td> </tr> <tr> <td style="text-align: center;">SHEET NO.</td> </tr> <tr> <td style="text-align: center;">16</td> </tr> </table>	CP-03	SECTION	PD	SHEET NO.	16
CONTRACT	BRIDGE NO.	N/A																				
T201200902	DESIGNED BY:	W. NAUMAN																				
COUNTY	CHECKED BY:	C. ESHAM																				
SUSSEX																						
CP-03																						
SECTION																						
PD																						
SHEET NO.																						
16																						

RIPRAP SCHEDULE		
NO.	TYPE	AREA (SY)
5	R-4	5.00
6	R-4	5.00
7	R-4	4.00
8	R-4	4.00
9	R-4	5.00
10	R-4	5.00

DRAINAGE INLET SCHEDULE						
NO.	STATION	OFFSET	BOX SIZE	GRATE	T.G. EL.	INV. EL.
22	208+17.83	*	48" x 48"	4	**	5.41
23	207+17.84	*	48" x 48"	1	**	4.26
24	208+61.96	*	34" x 24"	1	**	9.50
25	209+72.71	*	34" x 24"	1	**	8.18
26	211+43.63	*	66" x 66"	1	**	4.01

DRAINAGE PIPE SCHEDULE						
NO.	SIZE / TYPE	CLASS	LENGTH	SLOPE	INVERT EL.	DIS. EL.
22	15" RCP	IV	136.00	0.0085	5.41	4.26
23	14" x 23" RCP	IV	8.00	0.0050	4.26	4.22
24	15" RCP	IV	108.00	0.0104	9.50	8.38
25	15" RCP	IV	168.00	0.0177	8.18	5.21
26	29" x 45" RCP	V	8.00	0.0025	4.03	4.01
27	29" x 45" RCP	V	52.00	0.0025	4.01	3.88

FLARED END SECTION SCHEDULE			
NO.	SIZE / TYPE	SLOPE	SAFETY GRATE
10	29" x 45" RCP	0.0025	NO
11	29" x 45" RCP	0.0025	NO

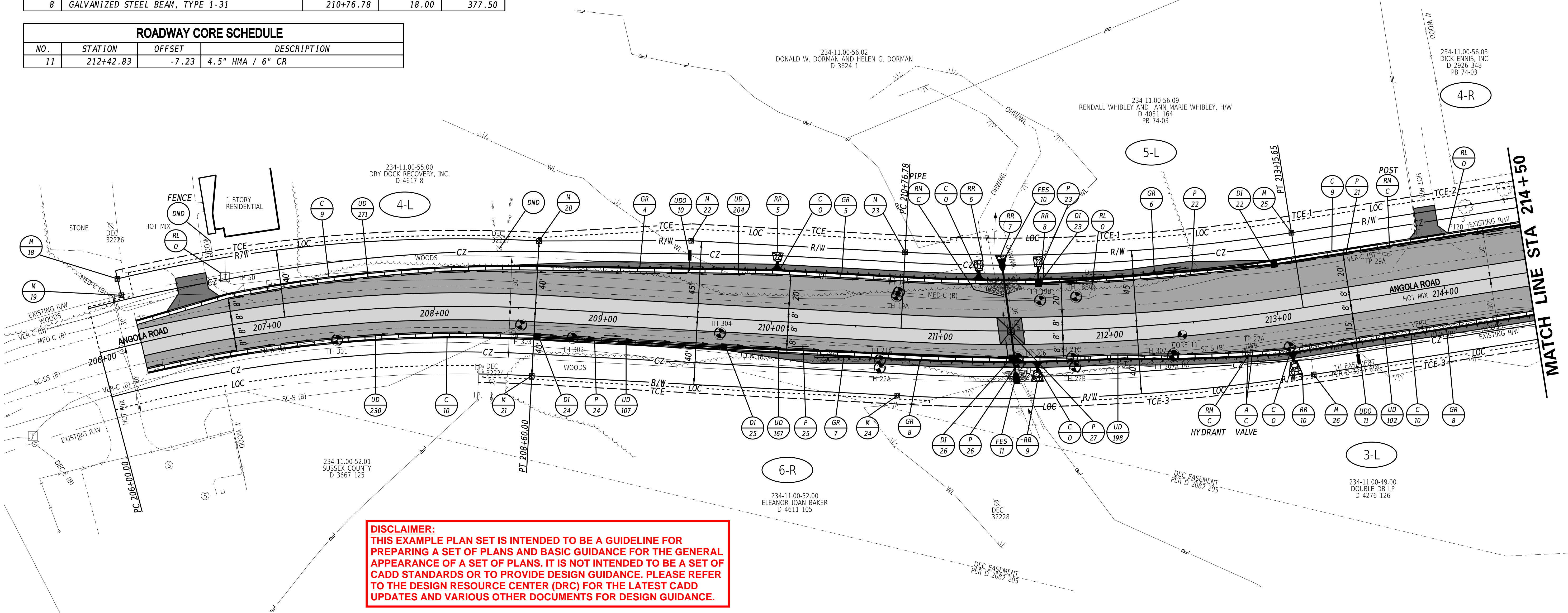
GUARDRAIL SCHEDULE				
NO.	ITEM DESCRIPTION / TYPE	BEGIN STA.	OFFSET	LENGTH
4	GUARDRAIL END TREATMENT, TYPE 1-31	209+00.00	-26.25	50.00
5	GALVANIZED STEEL BEAM, TYPE 1-31	209+50.00	-28.00	250.00
6	GUARDRAIL END TREATMENT, TYPE 1-31	212+00.00	-30.00	50.00
7	GUARDRAIL END TREATMENT, TYPE 1-31	210+26.78	18.00	50.00
8	GALVANIZED STEEL BEAM, TYPE 1-31	210+76.78	18.00	377.50

CURB SCHEDULE		
NO.	ITEM DESCRIPTION / TYPE	LENGTH
9	*I.P.C.C. CURB AND GUTTER, TYPE 1-4	768
10	*I.P.C.C. CURB AND GUTTER, TYPE 1-4	824

UNDERDRAIN OUTLETS		
NO.	LENGTH	DIS. EL.
10	4.00	8.92
11	4.00	7.58

ROADWAY CORE SCHEDULE			
NO.	STATION	OFFSET	DESCRIPTION
11	212+42.83	-7.23	4.5" HMA / 6" CR

* SEE STANDARD CONSTRUCTION DETAILS FOR DEPRESSED CURB REQUIREMENTS WITHIN THE LIMITS OF THE GUARDRAIL END TREATMENTS.



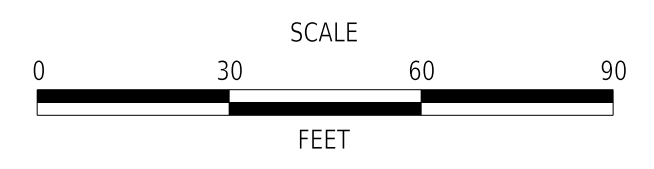
DISCLAIMER:
 THIS EXAMPLE PLAN SET IS INTENDED TO BE A GUIDELINE FOR PREPARING A SET OF PLANS AND BASIC GUIDANCE FOR THE GENERAL APPEARANCE OF A SET OF PLANS. IT IS NOT INTENDED TO BE A SET OF CADD STANDARDS OR TO PROVIDE DESIGN GUIDANCE. PLEASE REFER TO THE DESIGN RESOURCE CENTER (DRC) FOR THE LATEST CADD UPDATES AND VARIOUS OTHER DOCUMENTS FOR DESIGN GUIDANCE.

RIGHT-OF-WAY MONUMENT SCHEDULE					
NO.	TYPE	STATION	OFFSET	NORTHING	EASTING
18	CAPPED REBAR	206+20.00	-40.00	246108.6627	723706.3102
19	CAPPED REBAR	206+20.00	-30.00	246117.1772	723711.5544
20	CONCRETE	208+60.00	-40.00	246269.3076	723513.9311
21	CONCRETE	208+60.00	40.00	246322.7368	723573.4737
22	CAPPED REBAR	209+50.00	-45.00	246332.9537	723450.1018
23	CONCRETE	210+76.78	-45.00	246427.3135	723365.4301
24	CONCRETE	210+76.78	-45.00	246427.3135	723365.4301
25	CONCRETE	213+15.65	-45.00	246580.8395	723195.4884
26	CONCRETE	213+15.65	40.00	246649.5255	723246.5605

UTILITY TEST HOLE SCHEDULE						
NO.	UTILITY	STATION	OFFSET	GROUND EL.	COVER	O.D. & MATERIAL
18A	MED-C	210+74.43	-21.36	8.20	6.68	(3) 4" PVC
18B	VER & MED	211+81.25	-19.48	8.17	2.05	1" & 2.5" CABLE
19A	VER-C	210+73.44	-19.02	8.47	1.98	1" CABLE
19B	VER-C	211+59.50	17.91	6.81	2.26	2" CABLE
21A	UNKNOWN	210+65.38	19.59	10.20	2.89	1" CABLE
21C	UNKNOWN	211+77.56	16.49	9.61	2.89	1" CABLE
22A	VER-C	210+65.47	24.11	9.79	2.54	3" CABLE
22B	VER-C	211+79.06	22.14	9.21	3.79	4" PVC
301	TU-W	207+40.45	16.66	13.74	-	PROBED 10'

UTILITY TEST HOLE SCHEDULE						
NO.	UTILITY	STATION	OFFSET	GROUND EL.	COVER	O.D. & MATERIAL
302	TU-W	208+83.00	16.11	12.17	-	PROBED 10'
303	SC-S	208+51.99	10.20	12.63	4.56	16" PLASTIC
304	SC-S	209+69.90	8.78	11.37	5.48	16" PLASTIC
305	TU-W	211+46.34	19.42	9.33	-	PROBED 10'
306	SC-S	211+45.84	15.83	9.32	-	PROBED 10'
307	TU-W	212+36.56	18.24	9.61	-	PROBED 10'
307A	VER-C	212+36.08	19.12	9.89	2.84	3" PLASTIC
308	TU-W	213+04.35	21.76	9.75	3.20	16" PLASTIC

ADDENDA / REVISIONS



HSIP SC, SR24 AT CAMP ARROW HEAD ROAD AND SR24 AT ANGOLA ROAD

CONTRACT	T201200902	BRIDGE NO.	N/A
COUNTY	SUSSEX	DESIGNED BY:	W. NAUMAN
		CHECKED BY:	C. ESHAM

CONSTRUCTION PLAN

CP-04
SECTION
PD
SHEET NO.
17

02-APR-2020 09:42 \\DOT\F08\Cadd\Active_Designs\SUSSEX\024\road\T201200902\Plans\MODEL PLANS ONLY\CP 03.dgn

DRAINAGE INLET SCHEDULE						
NO.	STATION	OFFSET	BOX SIZE	GRATE	T.G. EL.	INV. EL.
15	219+68.59	*	48" x 30"	1	**	11.86
16	220+83.76	*	34" x 24"	1	**	12.58
17	222+50.66	*	48" x 48"	1	**	8.06
18	223+13.93	*	34" x 24"	1	**	8.20
19	223+68.37	*	34" x 24"	1	**	8.27
63+	221+13.11	65.40	48" x 48"	1	12.85	8.80

* MATCH CURB FLOWLINE OFFSET
 ** MATCH CURB FLOWLINE ELEVATION
 + POND OUTLET STRUCTURE. SEE SWM PLAN FOR OUTLET DETAILS

DRAINAGE PIPE SCHEDULE						
NO.	SIZE / TYPE	CLASS	LENGTH	SLOPE	INVERT EL.	DIS. EL.
16	15" RCP	IV	120.00	0.0030	12.60	12.24
17	18" RCP	IV	64.00	0.0030	8.06	7.87
18	12" RCP	IV	48.00	0.0030	8.20	8.06
19	12" RCP	IV	24.00	0.0030	8.27	8.20
20	24" RCP	IV	104.00	0.0100	8.80	7.76

RIPRAP SCHEDULE		
NO.	TYPE	AREA (SY)
11	R-4	80.00
12	R-4	5.00
13	R-4	6.00
14	R-4	5.00
15	R-4	58.00

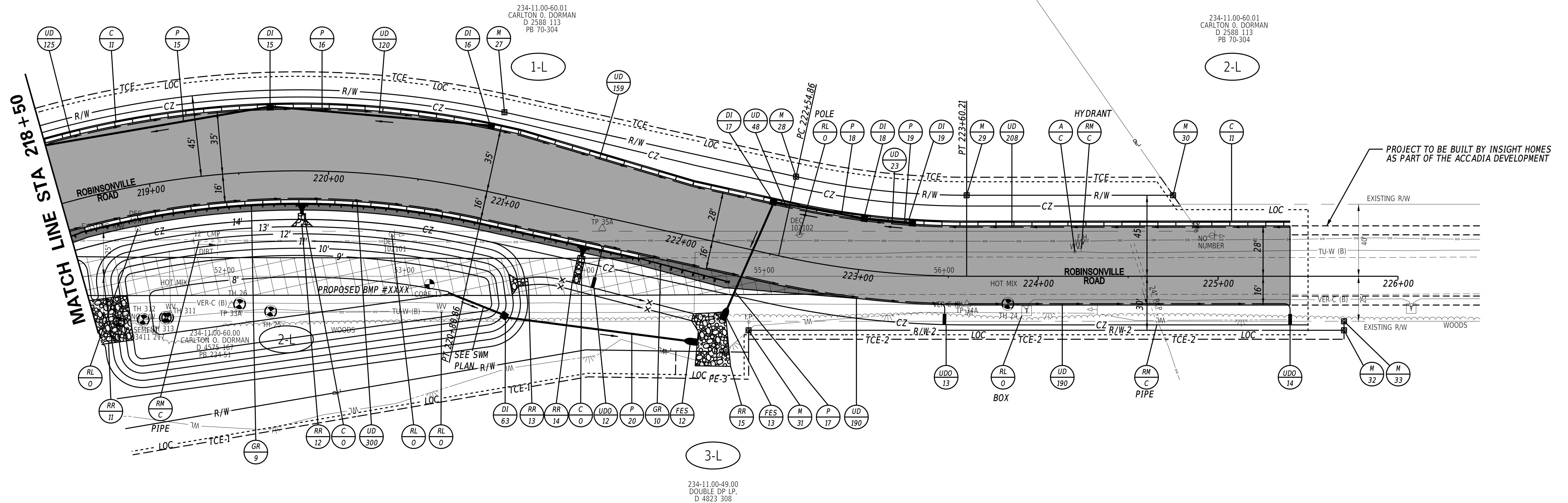
UNDERDRAIN OUTLETS		
NO.	LENGTH	DIS. EL.
12	4.00	10.32
13	4.00	9.16
14	4.00	7.68

DISCLAIMER:
 THIS EXAMPLE PLAN SET IS INTENDED TO BE A GUIDELINE FOR PREPARING A SET OF PLANS AND BASIC GUIDANCE FOR THE GENERAL APPEARANCE OF A SET OF PLANS. IT IS NOT INTENDED TO BE A SET OF CADD STANDARDS OR TO PROVIDE DESIGN GUIDANCE. PLEASE REFER TO THE DESIGN RESOURCE CENTER (DRC) FOR THE LATEST CADD UPDATES AND VARIOUS OTHER DOCUMENTS FOR DESIGN GUIDANCE.

CURB SCHEDULE		
NO.	ITEM DESCRIPTION / TYPE	LENGTH
11	I.P.C.C. CURB AND GUTTER, TYPE 1-4	703
12	*I.P.C.C. CURB AND GUTTER, TYPE 1-4	312

* SEE STANDARD CONSTRUCTION DETAILS FOR DEPRESSED CURB REQUIREMENTS WITHIN THE LIMITS OF THE GUARDRAIL END TREATMENTS.

GUARDRAIL SCHEDULE				
NO.	ITEM DESCRIPTION / TYPE	BEGIN STA.	OFFSET	LENGTH
9	GALVANIZED STEEL BEAM, TYPE 1-31	218+58.83	16.00	312.50
10	GUARDRAIL END TREATMENT, TYPE 1-31	221+79.50	16.00	50.00



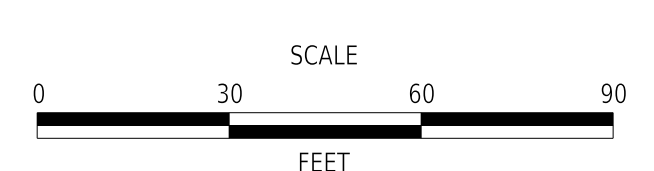
RIGHT-OF-WAY MONUMENT SCHEDULE						
NO.	TYPE	STATION	OFFSET	NORTHING	EASTING	
27	CONCRETE	220+88.86	-45.00	247113.5392	722616.0840	
28	CONCRETE	222+54.86	-45.00	247269.3358	722558.7840	
29	CONCRETE	223+60.21	-45.00	247354.7619	722516.3492	
30	CAPPED REBAR	224+74.96	-45.00	247451.3915	722454.4612	
31	CAPPED REBAR	222+47.47	44.02	247293.1266	722644.8883	
32	CAPPED REBAR	225+70.00	30.00	247571.8742	722466.3600	
33	CAPPED REBAR	225+70.00	25.00	247569.1775	722462.1495	

UTILITY TEST HOLE SCHEDULE						
NO.	UTILITY	STATION	OFFSET	GROUND EL.	COVER	O.D. & MATERIAL
24	VER-C	223+83.12	15.35	10.51	2.41	2" CABLE
25	TU-W	52+25.79	19.60	14.84	3.71	12" PLASTIC
26	VER-C	52+08.51	15.48	15.29	2.66	2" CABLE
311	TU-W	51+68.51	22.98	15.39	4.14	16" PLASTIC
312	TU-W	51+54.97	24.13	15.51	4.33	16" PLASTIC
313	TU-W	51+67.22	23.05	15.43	3.86	12" PLASTIC
314	TU-W	51+41.42	33.85	15.43	6.28	16" PLASTIC

FLARED END SECTION SCHEDULE			
NO.	SIZE / TYPE	SLOPE	SAFETY GRATE
12	24" RCP	0.0100	NO
13	18" RCP	0.0030	NO

ROADWAY CORE SCHEDULE			
NO.	STATION	OFFSET	DESCRIPTION
12	53+14.09	4.40	4.5" HMA / 1" ST

ADDENDA / REVISIONS



HSIP SC, SR24 AT CAMP ARROW HEAD ROAD AND SR24 AT ANGOLA ROAD

CONTRACT	T201200902	BRIDGE NO.	N/A
COUNTY	SUSSEX	DESIGNED BY:	W. NAUMAN
		CHECKED BY:	C. ESHAM

CONSTRUCTION PLAN

CP-05
SECTION
PD
SHEET NO.
18

02-APR-2020 08:42 \\DOT\F508\Cadd\Active_Designs\SUSSEX\024\road\T201200902\Plans\MODEL PLANS ONLY\CP 04.dgn