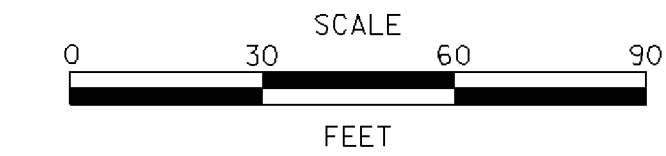


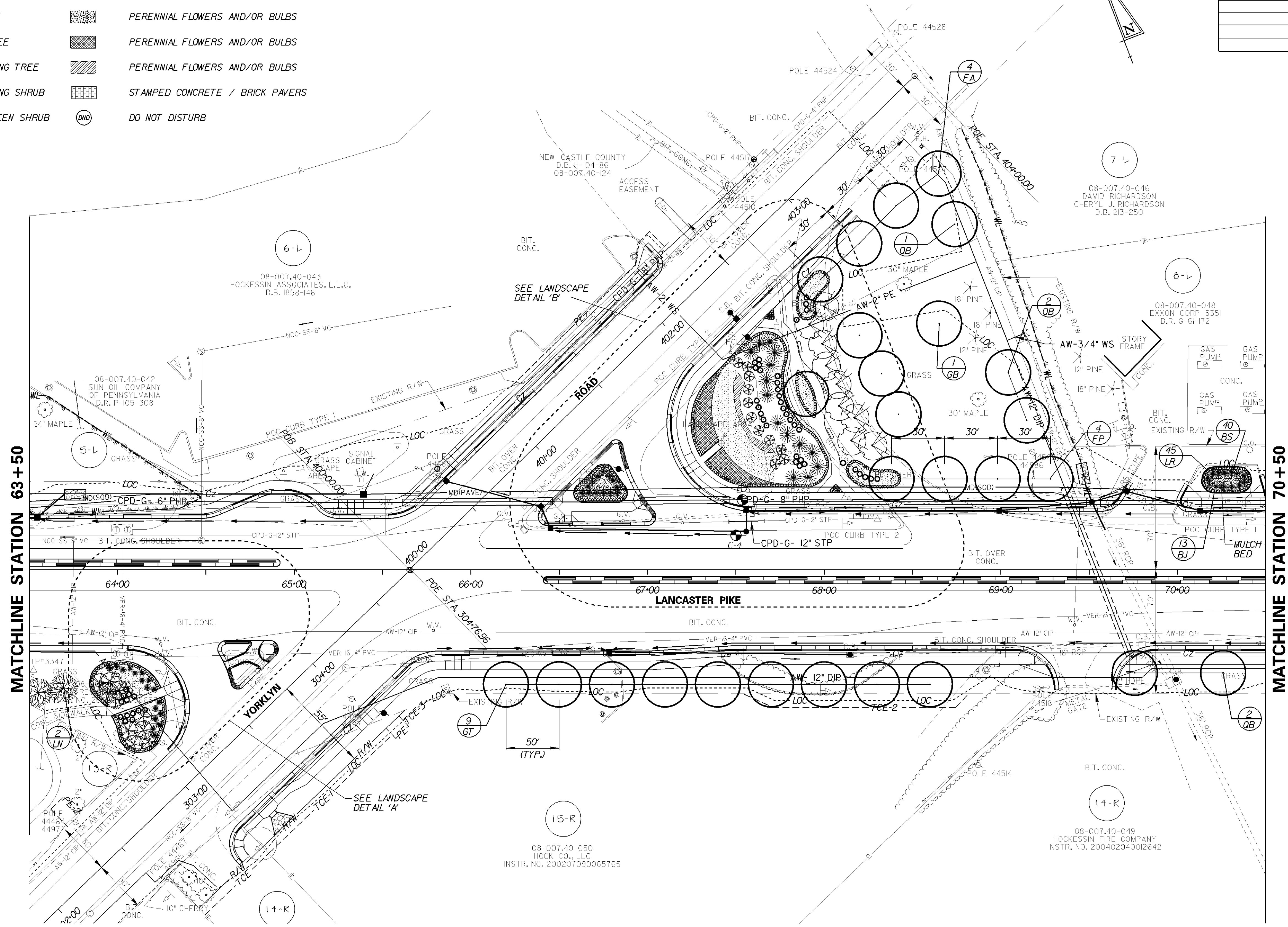
LANDSCAPING LEGEND

- | | | | |
|--|------------------------------|--|---------------------------------|
| | LANDSCAPING QUANTITY/SPECIES | | BROADLEAF EVERGREEN SHRUB |
| | EXISTING DECIDUOUS TREE | | PERENNIAL GRASS - ORNAMENTAL |
| | EXISTING CONIFEROUS TREE | | LILYTURF |
| | LARGE STREET TREE | | PERENNIAL FLOWERS AND/OR BULBS |
| | SMALL FLOWERING TREE | | PERENNIAL FLOWERS AND/OR BULBS |
| | ORNAMENTAL FLOWERING TREE | | PERENNIAL FLOWERS AND/OR BULBS |
| | ORNAMENTAL FLOWERING SHRUB | | STAMPED CONCRETE / BRICK PAVERS |
| | CONIFEROUS EVERGREEN SHRUB | | DO NOT DISTURB |

LANDSCAPING



CONTRACT	COUNTY	F.A.P. NO.	SHEET NO.	TOTAL SHTS.
20-007-02	NEW CASTLE	SEE TITLE SHEET	109	151
SR 41 (LANCASTER PIKE) SAFETY PROJECT				
REVISIONS				



LANDSCAPING NOTE

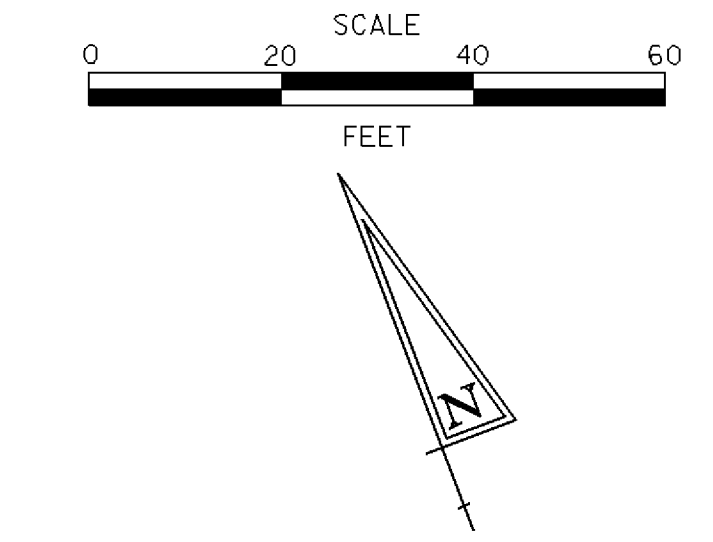
CONTRACTOR SHALL BE AWARE OF THE LOCATION OF NEWLY INSTALLED UNDERGROUND CONDUIT AND SHALL AVOID ANY CONFLICTS WITH SAID UTILITIES.

LANDSCAPING

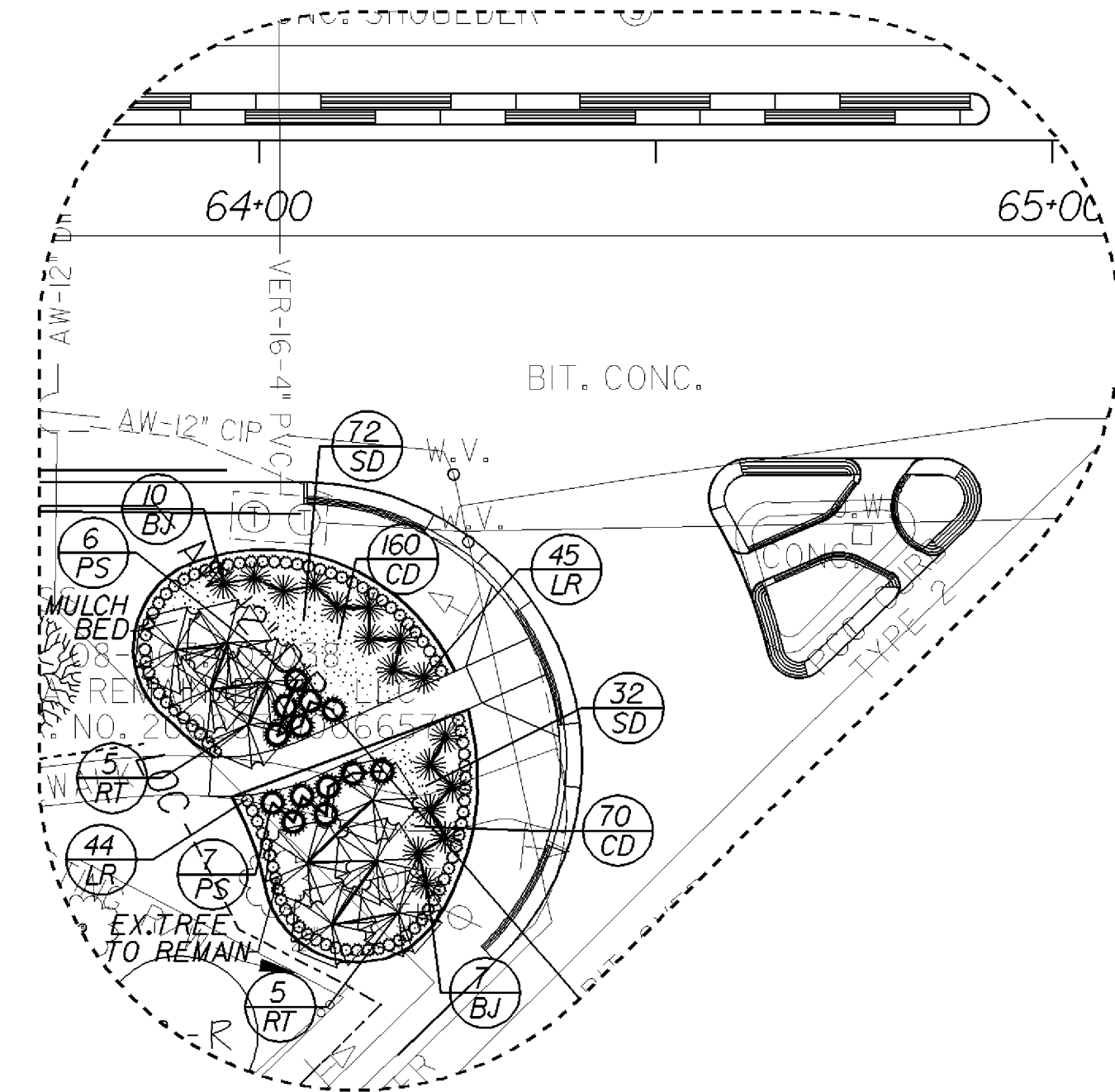
KEY	QUANTITY	BOTANICAL NAME
AR	3	ACER RUBRUM 'FRANKSRED'
FA	4	FRAXINUS AMERICANA 'AUTUMN PURPLE'
FP	4	FRAXINUS PENNSYLVANICA 'PATMORE'
GB	1	GINKGO BILOBA 'PNI 2720'
GT	10	GLEDITSIA TRIACANTHOS 'INERMIS 'SKYCOLE'
LN	2	LAGERSTROEMIA INDICA 'NATCHEZ'
KC	9	PRUNUS SERRULATA 'KWANZAN'
QB	5	QUERCUS BOREALIS
RT	21	CORNUS SERICEA 'ISANTY'
NS	15	ILEX 'WELLIE R. STEVENS'
BJ	43	JUNIPERUS HORIZONTALIS 'WILTONII'
PD	18	PANICUM VIRGATUM 'DALLAS BLUES'
PS	28	PANICUM VIRGATUM 'SHENANDOAH'
SD	399	HEMEROCALLIS 'STELLA DE ORO'
LR	536	LIRIOPE MUSCARI 'BIG BLUE'
BS	175	RUDBECKIA FULGIDA VAR. FULGIDA
AJ	690	SEDUM 'AUTUMN JOY'
CD	1230	NARCISSUS 'CARLTON'
	1096 SY.	SHREDDED HARDWOOD MULCH

PREL. TRACING J.A.D. DESIGN C.L.G./D.E.G. CHKD. J.M.P. 6/17/2004

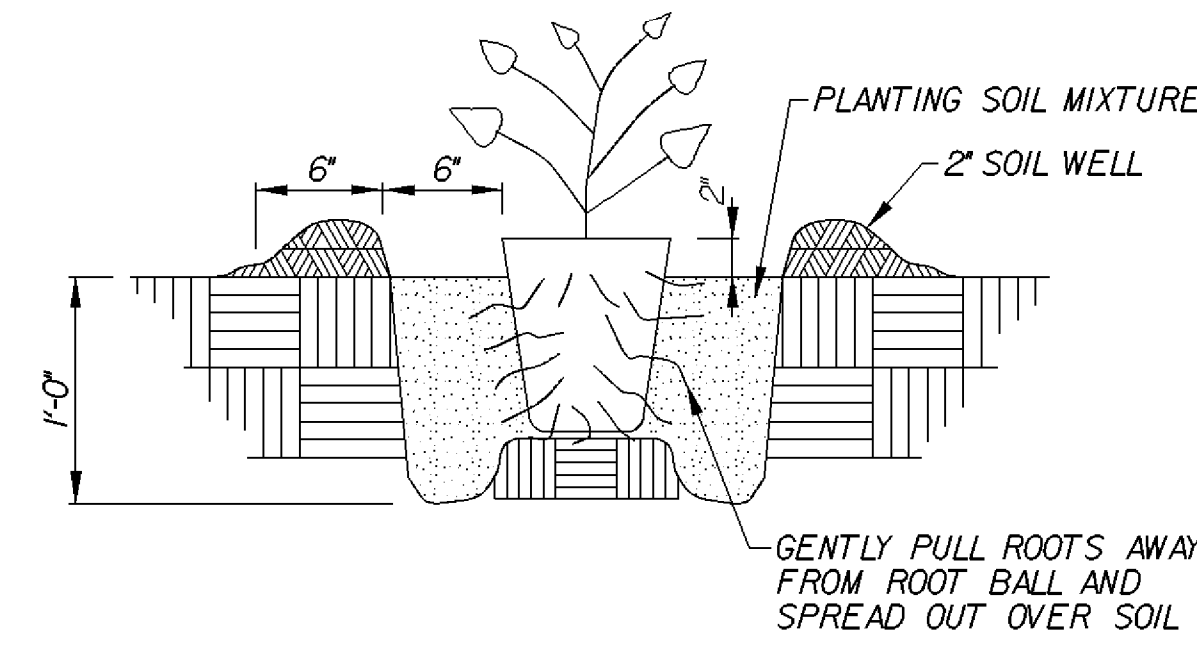
LANDSCAPE DETAILS



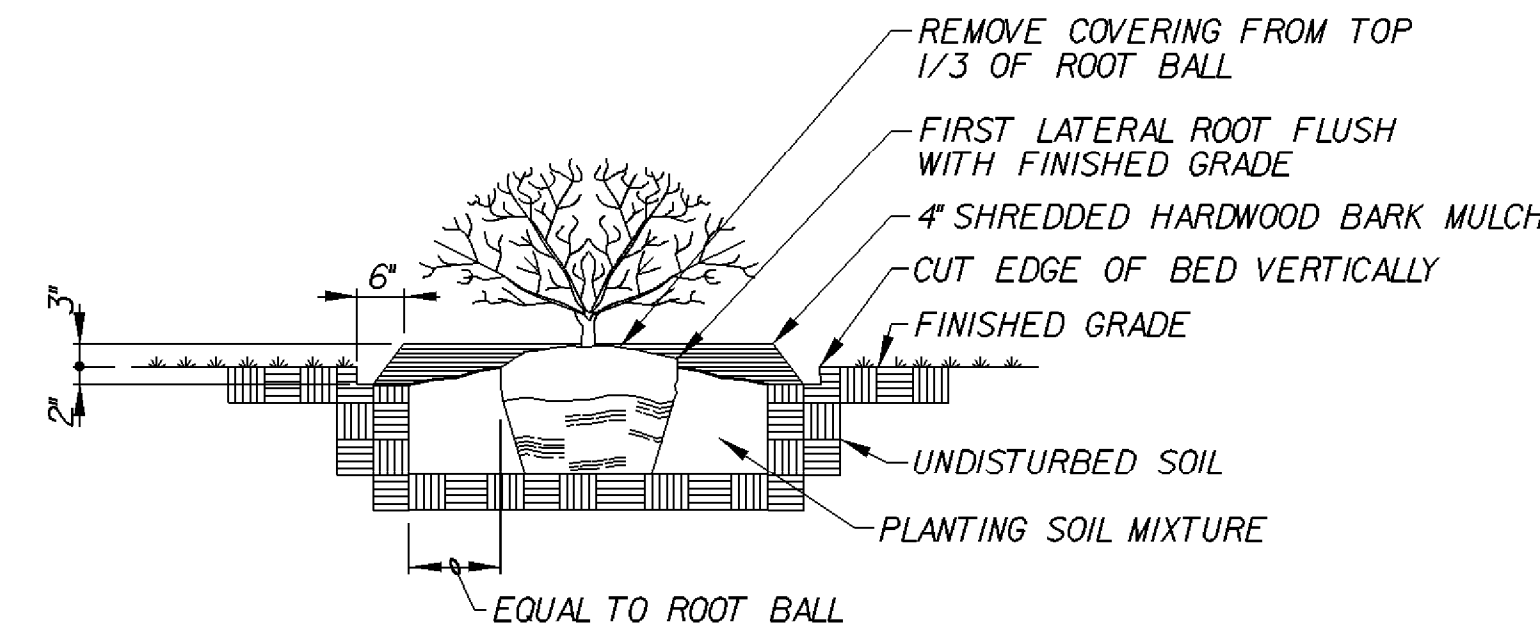
CONTRACT	COUNTY	F.A.P. NO.	SHEET NO.	TOTAL SHTS.
20-007-02	NEW CASTLE	SEE TITLE SHEET	114	151
SR 41 (LANCASTER PIKE) SAFETY PROJECT				
REVISIONS				



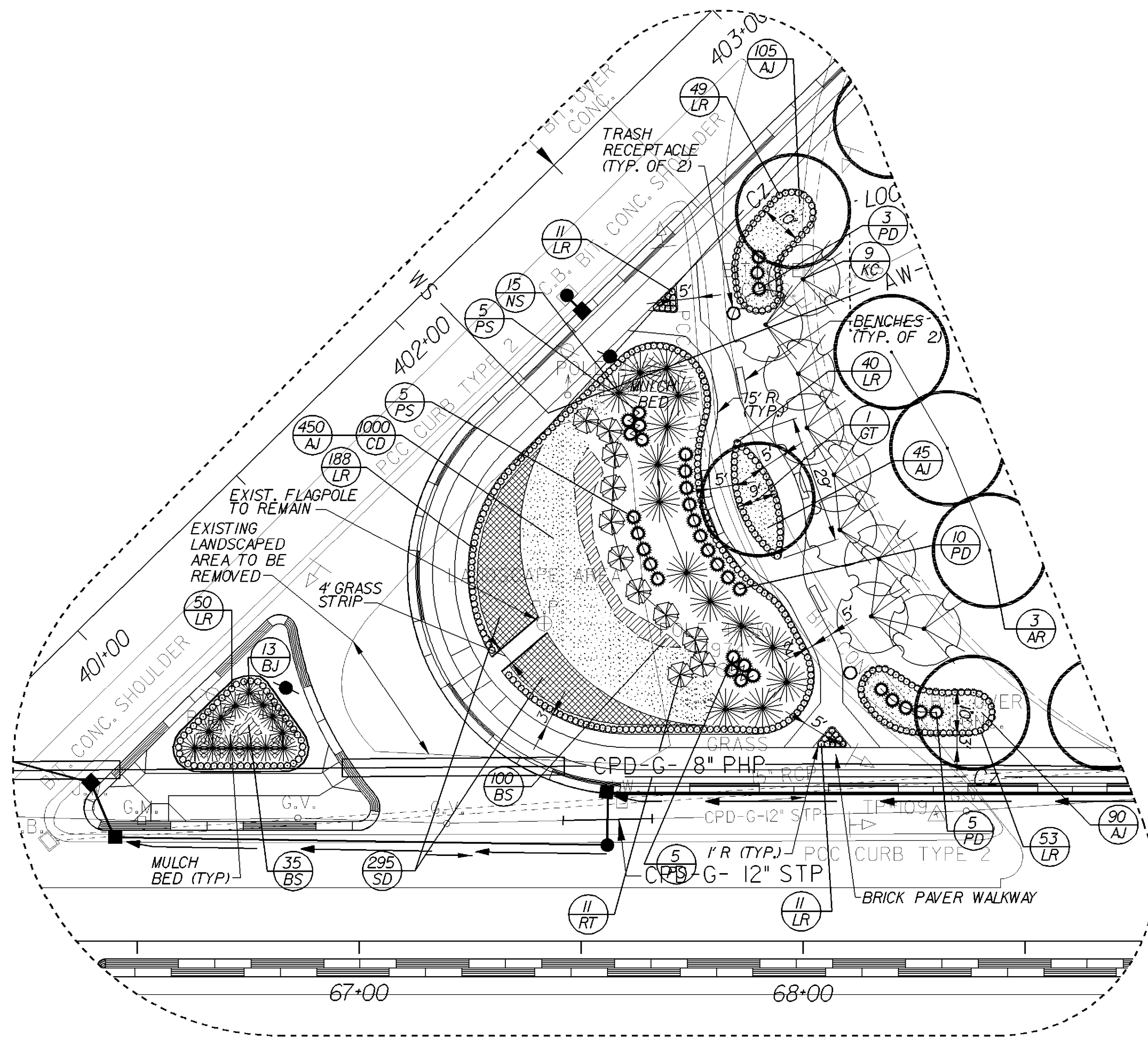
LANDSCAPE DETAIL 'A'



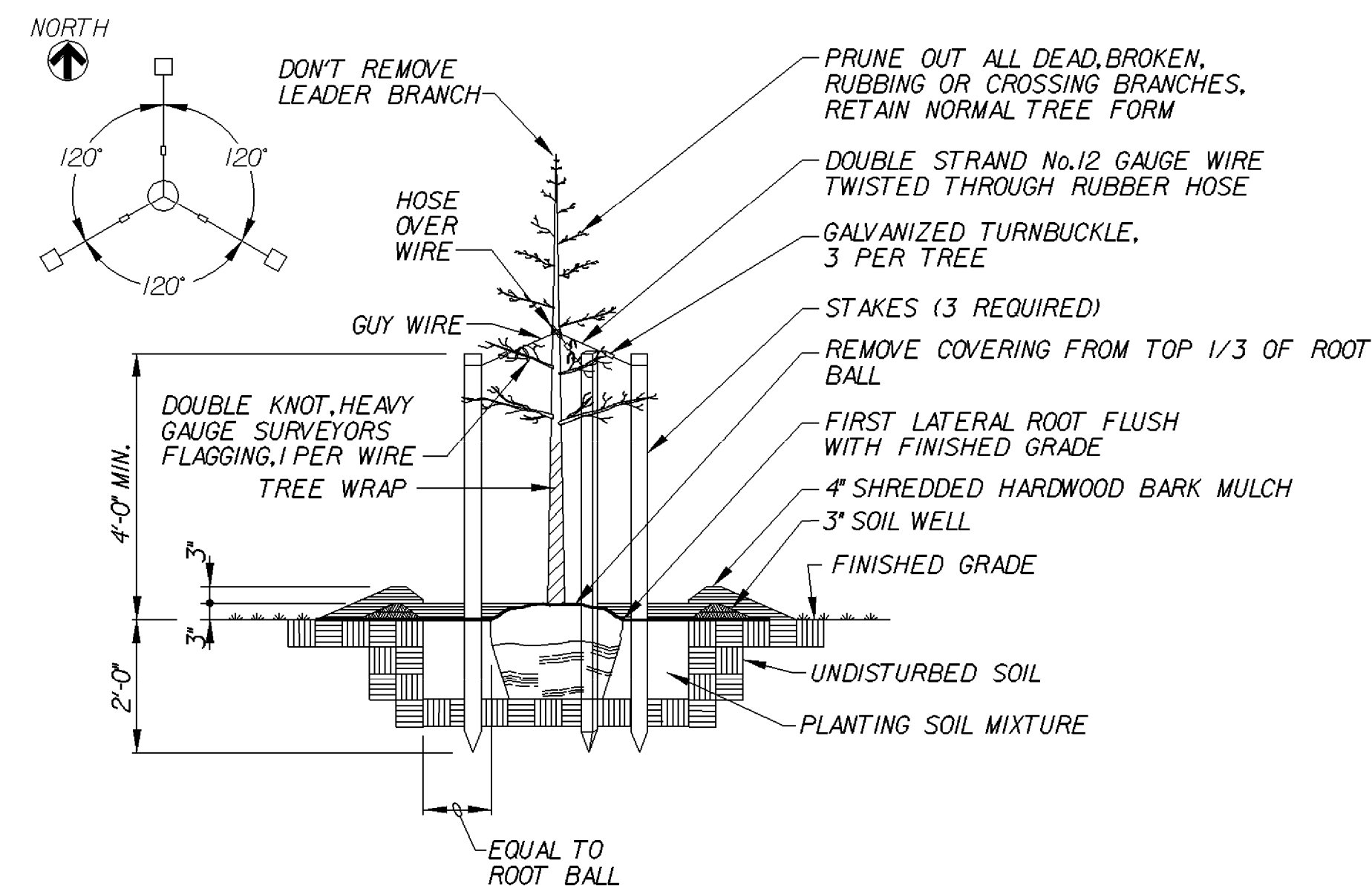
PLANTING DETAIL - CONTAINER PLANT
NO SCALE



PLANTING DETAIL - SHRUB
NO SCALE



LANDSCAPE DETAIL 'B'
SCALE: 1"=20'



PLANTING DETAIL - DECIDUOUS TREE
NO SCALE

PREL. TRACING
 J.A.D.
 DESIGN
 G.L.G./D.E.G.
 CHKD.
 J.M.P.

COMPOSITE LANDSCAPE PLANTING SCHEDULE

KEY	QUANTITY	BOTANICAL NAME	COMMON NAME	SIZE	METHOD	COMMENTS
TREES						
AR	7	ACER RUBRUM 'FRANKSRED'	RED SUNSET RED MAPLE	3 1/2"-4" CAL.	B&B	MINIMUM 16' HEIGHT **
AC	5	AMELANCHIER CANADENSIS	SHADBLOW SERVICEBERRY	7'-8' HEIGHT	B&B	
CC	12	CERCIS CANADENSIS	EASTERN REDBUD	1 3/4"-2" CAL.	B&B	
FA	12	FRAXINUS AMERICANA 'AUTUMN PURPLE'	AUTUMN PURPLE WHITE ASH	3"-3 1/2" CAL.	B&B	MINIMUM 16' HEIGHT **
FP	7	FRAXINUS PENNSYLVANICA 'PATMORE'	PATMORE ASH	3"-3 1/2" CAL.	B&B	MINIMUM 16' HEIGHT **
GB	16	GINKGO BILOBA 'PNI 2720'	PRINCETON SENTRY GINKGO	2"-2 1/2" CAL.	B&B	MINIMUM 16' HEIGHT **
GT	13	GLEDITSIA TRIACANTHOS INERMIS 'SKYCOLE'	SKYLINE THORNLESS HONEYLOCUST	3"-3 1/2" CAL.	B&B	MINIMUM 16' HEIGHT **
LN	5	LAGERSTROEMIA INDICA 'NATCHEZ'	NATCHEZ CRAPEMYRTLE	5'-6' HEIGHT	B&B	
MRB	2	MALUS 'RED BARRON'	RED BARRON CRABAPPLE	1 3/4"-2" CAL.	B&B	
PO	7	PLATANUS OCCIDENTALIS	AMERICAN PLANETREE	2 1/2"-3" CAL.	B&B	PLANT 40' APART
KC	14	PRUNUS SERRULATA 'KWANZAN'	KWANZAN FLOWERING CHERRY	3"-3 1/2" CAL.	B&B	
QB	17	QUERCUS BOREALIS	NORTHERN RED OAK	3"-3 1/2" CAL.	B&B	MINIMUM 16' HEIGHT **
SHRUBS						
CA	15	CALYCANTHUS FLORIDUS	COMMON SWEETSHRUB	30" HEIGHT	B&B	PLANT 10' APART
RT	21	CORNUS SERICEA 'ISANTI'	DWARF ISANTI RED-TWIG DOGWOOD	3'-3 1/2' CAL.	B&B	PLANT MIN. 8' APART
NS	15	ILEX "NELLIE R. STEVENS"	NELLIE R. STEVENS HOLLY	3'-4' HEIGHT	B&B	PLANT MIN. 7' APART
IVM	2	ILEX VERTICILLATA 'SOUTHERN GENTLEMAN'	SOUTHERN GENTLEMAN WINTERBERRY	3'-4' HEIGHT	B&B	PLANT 10' APART
IV	17	ILEX VERTICILLATA 'WINTER RED'	WINTER RED WINTERBERRY	3'-4' HEIGHT	B&B	PLANT 10' APART
BJ	247	JUNIPERUS HORIZONTALIS 'WILTONI'	BLUE RUG JUNIPER	15"-18" SPREAD	NO. 3 CONT.	PLANT 36"-48" APART
LB	15	LINDERA BENZOIN	SPICEBUSH	30" HEIGHT	B&B	PLANT 10' APART
TM	40	TAXUS CUSPIDATA 'MONLOO'	EMERALD SPREADER JAPANESE YEW	15"-18" HEIGHT	B&B	PLANT 6' APART
ORNAMENTAL GRASSES						
PD	18	PANICUM VIRGATUM 'DALLAS BLUES'	BLUE SWITCHGRASS	2 GALLON	CONT.	PLANT 36"-48" APART
PS	50	PANICUM VIRGATUM 'SHENANDOAH'	RED SWITCHGRASS	2 GALLON	CONT.	PLANT 36"-48" APART
PERENNIALS						
SD	601	HEMEROCALLIS 'STELLA DE ORO'	STELLA DE ORO DAYLILY	1 GALLON	CONT.	PLANT 18" APART
LR	1,155	LIRIOPE MUSCARI 'BIG BLUE'	BIG BLUE LIRIOPE	2 1/4" POT	PP	PLANT 18" APART
BS	474	RUDBECKIA FULGIDA 'GOLDSTURM'	BLACK EYED SUSAN	1 QUART	CONT.	PLANT 18" APART
AJ	690	SEDUM 'AUTUMN JOY'	STONE CROP	1 QUART	CONT.	PLANT 18" APART
BULBS						
CD	1,678	NARCISSUS 'CARLTON'	CARLTON DAFFODIL LARGE ROUND DIVISION II	BULBS		PLANT 12" APART

** TREES TO BE PLANTED TO MEET REFORESTATION REQUIREMENTS

LANDSCAPE DETAILS

SCALE: AS SHOWN

CONTRACT	COUNTY	F.A.P. NO.	SHEET NO.	TOTAL SHTS.
20-007-02	NEW CASTLE	SEE TITLE SHEET	115	151
SR 41 (LANCASTER PIKE) SAFETY PROJECT				
REVISIONS				

LANDSCAPE NOTES:

- ALL LANDSCAPING SHALL BE DONE IN ACCORDANCE WITH DELDOT STANDARD SPECIFICATIONS AND THE SPECIAL PROVISIONS FOR SECTION 737 - PLANTING.
- THE CONTRACTOR SHALL VERIFY PLANT MATERIAL QUANTITIES SHOWN ON THE PLANS WITH THE TOTALS IN THE PLANT SCHEDULE. WHERE DISCREPANCIES OCCUR BETWEEN THE PLANS AND THE PLANT SCHEDULE, THE PLANS SHALL GOVERN.
- THE CONTRACTOR IS RESPONSIBLE FOR CONTACTING MISS UTILITY TO LOCATE ALL UNDERGROUND UTILITY LINES PRIOR TO INSTALLATION OF PLANTINGS.
- ALL PLANTING OPERATIONS SHALL BE UNDER THE SUPERVISION OF AN EXPERIENCED PLANTSMAN.
- EACH TREE AND SHRUB PLANTING AREA SHALL BE SPREAD WITH 4 INCH DEEP SHREDDED HARDWOOD BARK MULCH. EACH PERENNIAL AND ORNAMENTAL GRASS PLANTING AREA SHALL BE SPREAD WITH 2 INCH DEEP SHREDDED HARDWOOD BARK MULCH.
- ALL TREES UP TO 2 1/2 INCH CALIPER SHALL HAVE A 6 FOOT DIAMETER MULCH BED. ALL TREES 2 1/2 INCH OR GREATER CALIPER SHALL HAVE AN 8 FOOT DIAMETER MULCH BED. ALL INDIVIDUAL SHRUBS SHALL HAVE A 4 FOOT DIAMETER MULCH BED.
- NO PLANT MATERIAL SHALL BE PLANTED DIRECTLY IN FRONT OF ROADWAY SIGN SIGHT LINES.
- ALL TREES MUST BE PLANTED BEHIND THE CLEAR ZONE (C2) LABELED ON THE DRAWINGS.
- ALL STREET TREES SHALL HAVE STRAIGHT TRUNKS, A SINGLE LEADER AND SHALL BE FREE OF BRANCHING A MINIMUM 7 FOOT HEIGHT ABOVE GRADE.
- THE QUERCUS BOREALIS SHALL BE INSTALLED BETWEEN MARCH 1ST AND MAY 1ST.
- FOR THE PLANT ESTABLISHMENT PERIOD AND FOR LANDSCAPE MAINTENANCE RESPONSIBILITY FOLLOWING FINAL ACCEPTANCE, SEE THE SPECIAL PROVISIONS.
- ALL EXISTING TREES DESIGNATED DND AND OTHER TREES TO REMAIN THAT ARE DISTURBED DURING CONSTRUCTION SHALL HAVE THE DAMAGE CORRECTED BY AN I.S.A. CERTIFIED ARBORIST AT THE CONTRACTOR'S EXPENSE.
- ALL AREAS UNDER THE DRIP LINE OF EXISTING TREES THAT MAY BE DISTURBED DURING CONSTRUCTION SHALL HAVE A TWELVE INCH (12") LAYER OF MULCH CHIPS DISTRIBUTED AS A SAUCER FROM THE TREE TRUNK OUT TO TWO FEET (2') BEYOND THE DRIP LINE. THIS IS A PRECAUTIONARY MEASURE TO INSURE NO EXCESSIVE COMPACTION OR DAMAGE TO THE ROOT STRUCTURE DURING CONSTRUCTION. UPON COMPLETION OF WORK WITHIN THE DRIP LINE, THE MULCH CHIPS MUST BE REMOVED AND THE AREA RETURNED TO ITS ORIGINAL CONDITION OR PLANTED IN A MULCH BED IN ACCORDANCE WITH THE PLANS. TEMPORARY MULCHING SHALL BE MEASURED AND PAID FOR UNDER ITEM 737002 - MULCHING, PLANTS (SY.).
- ALL TEMPORARY MULCHING MAY BE RE-USED AS PERMANENT MULCHING WITH THE APPROVAL OF THE ENGINEER.

REFORESTATION REQUIREMENTS:

ON APRIL 16, 2003, WHITMAN, REQUARDT AND ASSOCIATES, LLP CONDUCTED A SITE INVESTIGATION FOR A TREE INVENTORY WITHIN THE LIMITS OF CONSTRUCTION (LOC). DELAWARE STATE SENATE BILL NO. 324 DEFINES TREES AS "WOODY PLANTS WITH A TRUNK MEASURING FOUR INCHES IN DIAMETER AT FOUR FEET ABOVE THE GROUND". BASED ON THIS CRITERIA, A TOTAL OF 36 TREES WILL BE AFFECTED WITHIN THE PROJECT AREA. THIS PROJECT WILL BE REMOVING BETWEEN 10 AND 50 TREES. IN ACCORDANCE WITH SECTION 209 (E) OF BILL NO. 324, A 2H REPLANTING MITIGATION IS REQUIRED. REPLACEMENT TREES SHALL BE A MINIMUM HEIGHT OF 16 FEET, BALLED AND BURLAPPED, NURSERY GROWN STOCK. AS A RESULT OF THIS CRITERIA, 72 TREES, A MINIMUM 16 FOOT HEIGHT, ARE BEING INCORPORATED INTO THE LANDSCAPE PLAN WITHIN THE SR 41 RIGHT-OF-WAY.

MULCH REQUIREMENTS - ITEM 737002 MULCHING, PLANTS

2 INCH THICK MULCH REQUIRED FOR PERENNIALS AND ORNAMENTAL GRASS: 1,089 SY.
 4 INCH THICK MULCH REQUIRED FOR TREES AND SHRUBS: 1,380 SY.
 MULCH REQUIRED: 2,469 SY.
 10% CONTINGENCY: 247 SY.
 TOTAL MULCH REQUIRED: 2,716 SY.

ESTIMATED 12 INCH THICK TEMPORARY PROTECTIVE MULCH FOR EXISTING TREES: 230 SY.

PREL. TRACING J.A.D. DESIGN C.L.G./D.E.G. CHKD. J.M.P.