

Below are instructions on how to access the Archives through the Gateway.

There is just one caveat to this process: This is ONLY Capital projects with a few exceptions at this time. We do not have geometry related to very many Public Works / Development / Commercial Entrance projects (these are those ones that are identified by a State Project ID starting with SNR, SKR, or SSR) which will be added over time. For now, please review the PDFs on our Archive Plan webpage ([link here](#)) to determine if there are contracts that fit your needs that are not available on the map.

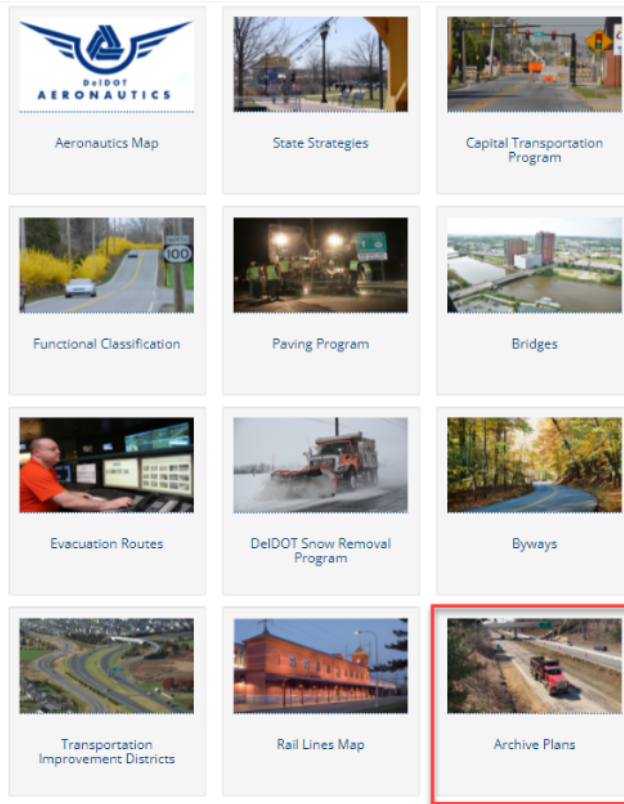
Please note that if you are unable to find a contract, you may still request them by sending an email to DOT.ArchiveRequest@delaware.gov. However, this is reserved only for projects that you cannot find after following all of the instructions below as well as Cross Referencing the PDF links. Most times this will be SNR, SKR, and SSR projects.

In addition, **we are NO LONGER uploading files to the FTP site. If you request projects that are not on the Gateway, we will be adding it to the map for you to access.** The process itself includes drawing the geometry on the map and linking it with our database that stores the document, then in an overnight process the document will be available on the Gateway. Please be aware that, based on workload and other requests, it may take a few days to make the files available for your request.

To access the gateway, go to the DelDOT homepage (<https://deldot.gov>) or click on the link below the screenshot.

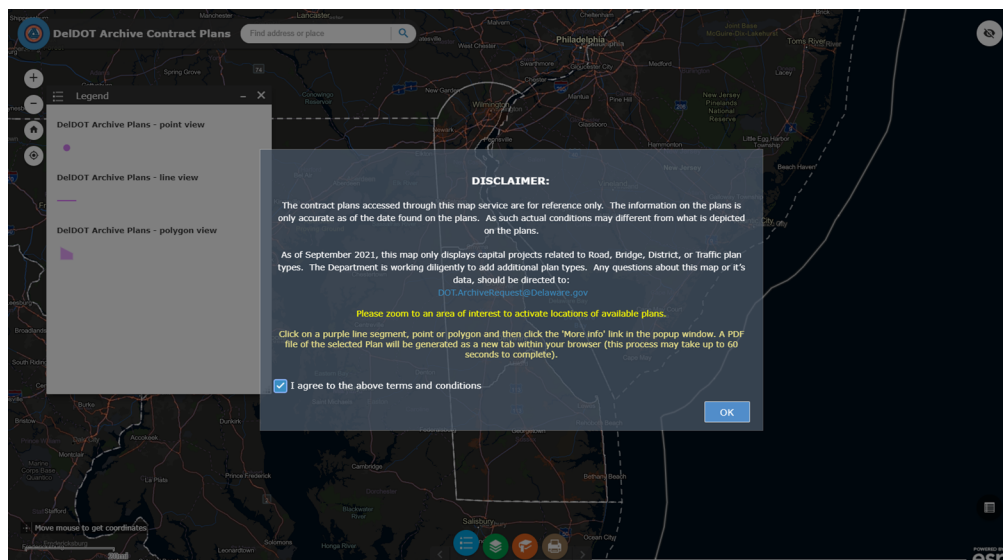


<https://deldot.gov/Programs/gate/index.shtml>



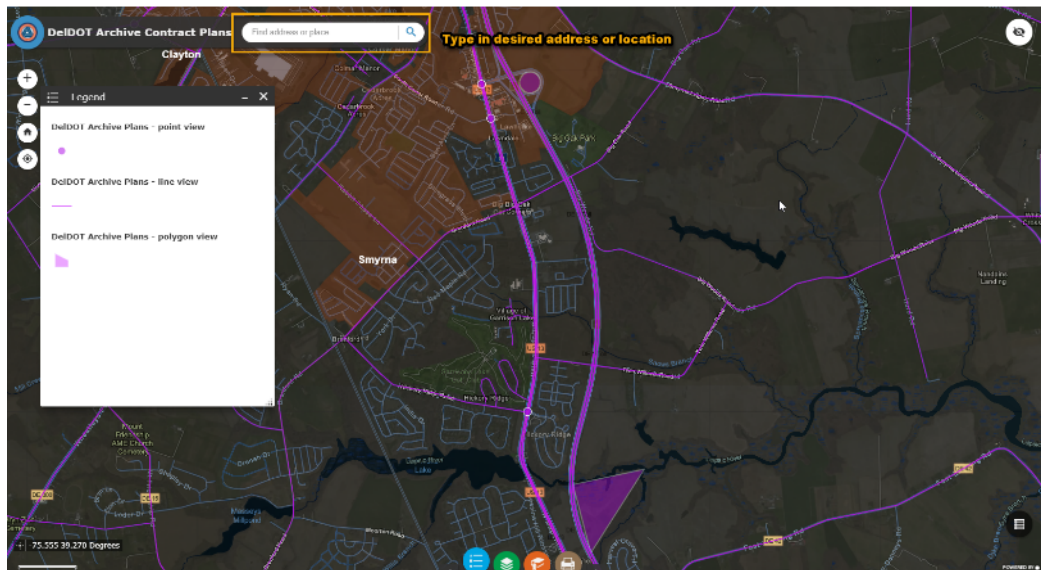
Once on the DelDOT Gateway website, click on the “Archive Plans” icon as shown below. This will open a new window in which will display the Gateway maps.

After reading the Disclaimer, you have to click the check box where it says “I agree...” and then click the OK button as shown below.

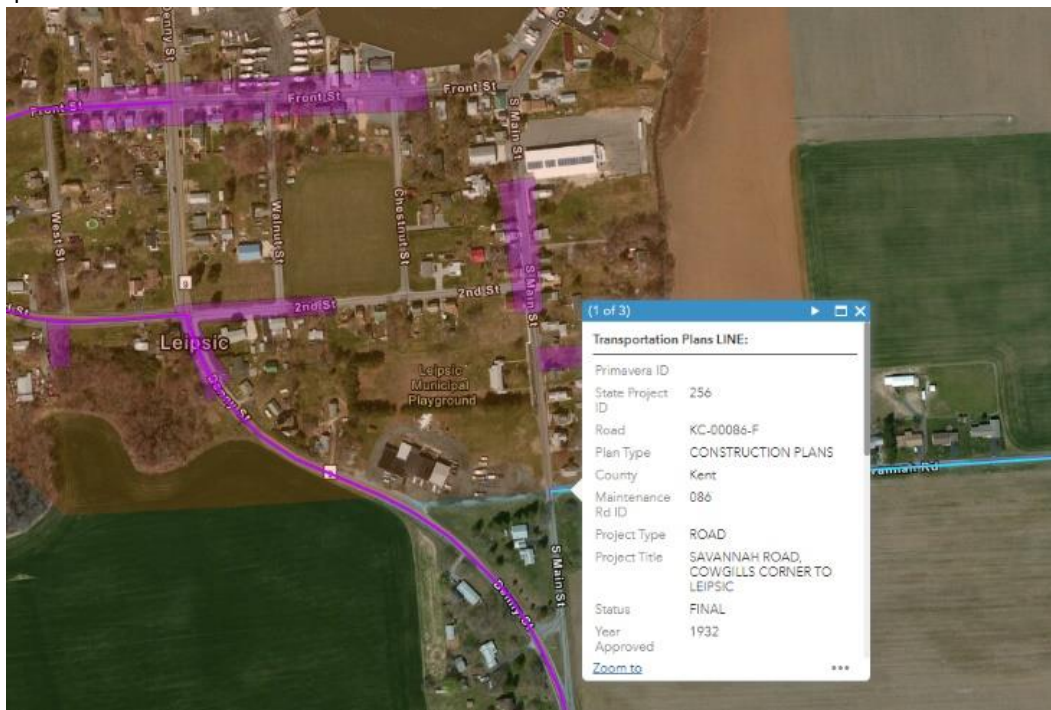


As the map gets more zoomed in, it will display magenta lines. The magenta lines are areas that have Archive plans associated with them. There are a few ways to find possible projects in the desired area.

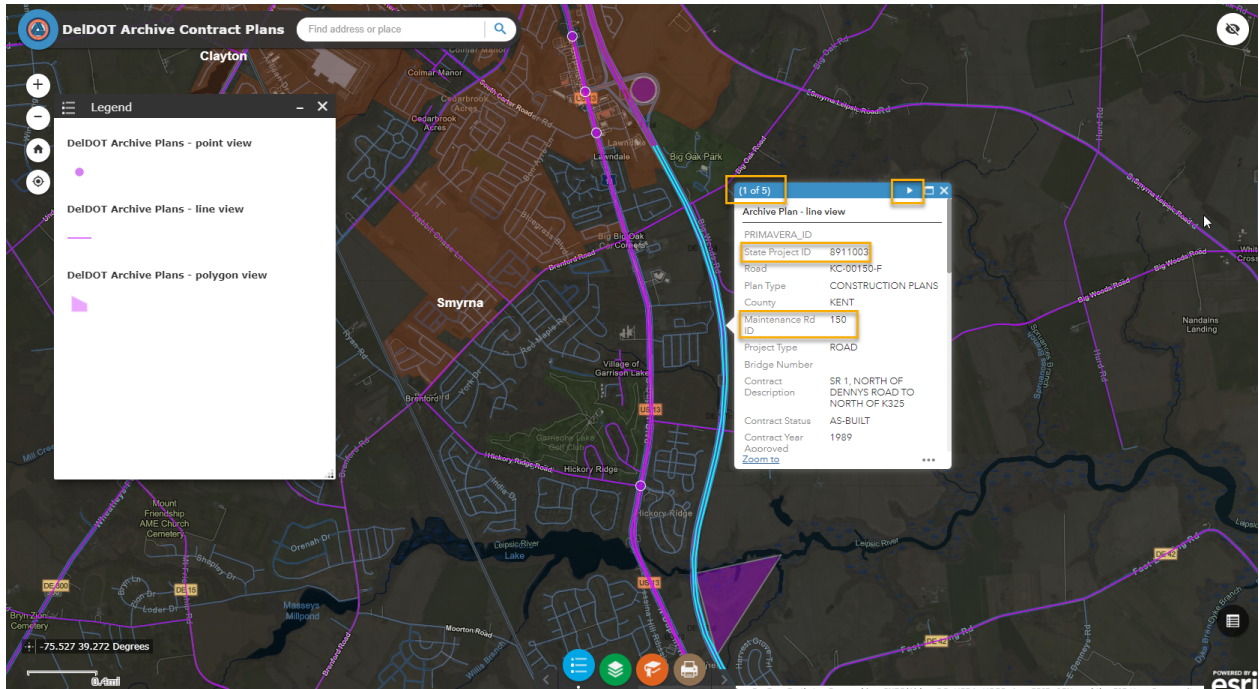
- 1.) Type in the search, as shown below, either the address or location.



- 2.) Zoom into the desired area and click on the magenta lines. The map will return all results for any project that are under the point you picked on the map. **Please Note: It is best to click on multiple portions of the desired area. Sometimes there are projects whose limits start at a different spot on the road. If you only click one point you may miss other projects that in fact along that road/area.** Here is an example of this method:

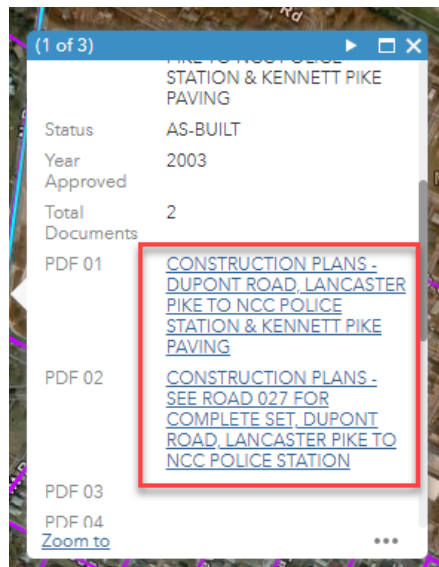


- 3.) The 2nd option is **to click on the Attribute Table icon**. This will open a form at the bottom of the screen that will show you all projects that are in your search area.



Once you have the area you are looking for, click on the specific area. A window will open up with information in regard to that road/bridge as shown below. **Notice in the popup that it says (1 of 3) at the top left of the popup window and has an arrow in top right. Click that arrow to go to other projects that are under the spot that you clicked.**

If you scroll down in the popup window, you'll see links for plans related to the specific project that you have selected:



Clicking on one of these links will download the PDF to your computer. (Remember to change to the other projects using the arrow in the top right corner of the popup window to download the plans for those other projects.)