

Department of Transportation

COT Meeting

December 13, 2016

DeIDOT

AGENDA

- ▶ Approval of the Agenda
- ▶ Approval of the Minutes
- ▶ Update on Port of Wilmington Activities
- ▶ Secretary's Briefing
- ▶ Review of Public Comments from CTP Hearing
- ▶ CTP Path Forward
- ▶ Public Comment

Update on Port of Wilmington

DeIDOT

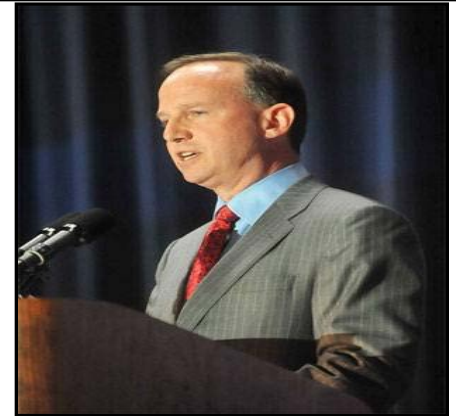


The Port of Wilmington, Delaware Presents to Council on Transportation (COT)



Diamond State Port Corp (DSPC)

- 1923 – first ship called at the Port
- 1995 - owned by the State of Delaware and operated by the DSPC
- Landlord, terminal, warehouse operator & direct employer
- Board: Five cabinet members + Co-chairs of the Bond Bill Committee sit on the DSPC board; total members - 15



 **DELAWARE** Port Inc.  **global**
ECONOMIC DEVELOPMENT OFFICE Delaware
Right Place. Right Size.

Delaware's Seaport - Overview

- 400 ships & 6.8m tons annually
- Diverse cargo portfolio
- National leadership in key import/export commodities
- State investment of \$199m for port development... Port returned >\$439m in tax revenue
- Economic Impact:
 - **5,900 family sustaining regional jobs**
 - **\$436m in annual business revenue**
 - **\$41m in regional annual tax revenue**
 - **\$409m in personal income for State & region**



Port Overview & Infrastructure

- Landlord, terminal, warehouse operator & direct employer
- 308 acres at the confluence of the Christina and Delaware Rivers
- 1st major port on Delaware River – only 63 mi /4 hrs from Atlantic
- 7 ships berths for cargo operations & a multi-purpose berth – ideal for RoRo; drafts to 38 ft MLW
- 800,000 sf of cold storage in 6 warehouses
- 250,000 sf dry warehouse space with covered rail service
- 59 acres outside storage
- Foreign Trade Zone (FTZ)



Port Infrastructure



Cargo Portfolio

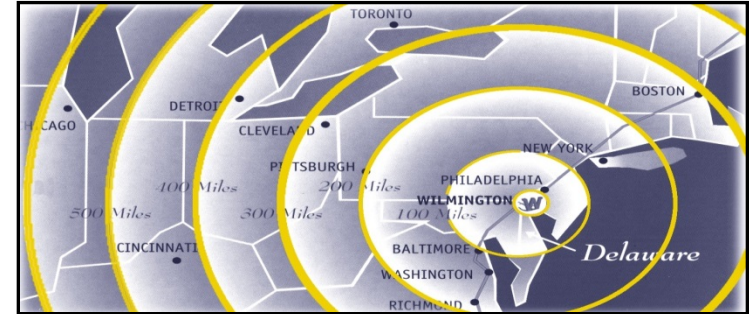


- Fresh tropical & deciduous fruit
- Containerized cargo
- Juice concentrate
- Vehicles & RoRo (Roll-on-Roll-off)
- Dry & liquid bulk
- Breakbulk (steel + forest products)
- Project cargo
- Wind turbine components
- Livestock



Competitive Advantages

- Supply chain logistics
 - Center of US Mid-Atlantic region
 - Overnight access to 1/3 of US & Canadian consumers
 - 6 hr round voyage savings vs. Phila/Camden
 - Multiple berths
 - One-quarter mile from I-495 highway
 - On-dock rail service by NS & CSXT with shared access
 - Supportive DelDOT permitting & State Trooper escort services





Moving Forward



Tomorrow is Not Today on the Same Path...



Port Cargo Statistics

Port Statistics - CY 2011-2015

	CY 2011	CY 2012	CY 2013	CY 2014	CY 2015
Total annual vessel calls	408	382	367	367	383
CARGO MIX	Short Tons (,000s)	Short Tons (,000s)	Short Tons (,000s)	Short Tons (,000s)	Short Tons (,000s)
Total non-containerized cargo	488	491	629	462	529
Total containerized cargo	1,750	1,872	2,002	2,169	2,269
Total dry bulk cargo	1,451	1,340	1,272	1,829	2,115
Total liquid bulk cargo	1,395	1,372	1,302	1,665	1,965
Grand Total	5,084	5,076	5,205	6,125	6,878

Truck Metrics

- Tomorrow's roadway is certainly not today's path ... it will be more congested!
- Truck gate passes – truck count
 - FY 2015 159,744
 - FY 2016 166,531 - plus 6,787 or 4.2%
- Truck inbound and outbound trips – roadway impact
 - FY 2015 319,488
 - FY 2016 330,062 - plus 13,574 or 4.2%



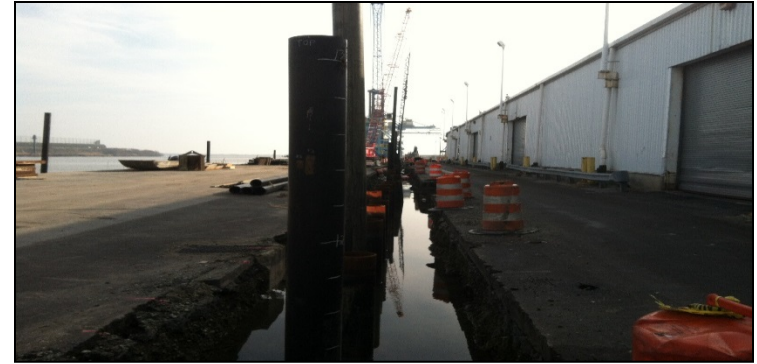
Capital Funding

Projects with Grant Funding (in \$'000)				
Project	Grant Funding		Bond Bill	Total
	Federal	State		
Port Security related	\$ 4,812	\$ -	\$ 148	\$ 4,960
Flood Abatement	\$ -	\$ 712	\$ 4,772	\$ 5,484
Berth 5 & 6 Rehabilitation	\$ 10,000	\$ 9,288	\$ 294	\$ 19,582
	\$ 14,812	\$ 10,000	\$ 5,214	\$ 30,026

Major Capital Projects

Major Current Capital Projects (in \$'000)			
Project	Budget	Spent	Balance
New Cranes	\$ 25,450	\$ 20,581	\$ 4,869
Berths 5 & 6	\$ 19,582	\$ 9,396	\$ 10,186
Tenants improvements	\$ 14,615	\$ 1,928	\$ 12,687
Flood Abatement	\$ 5,484	\$ 3,189	\$ 2,295
Berths 2 & 3	\$ 4,500	\$ -	\$ 4,500
Sprinkler System upgrades	\$ 1,500	\$ -	\$ 1,500
Warehouse B Roof	\$ 1,000	\$ -	\$ 1,000
	\$ 72,131	\$ 35,094	\$ 37,037

Berth 5 Reconstruction



Kocks Crane Parts (Beam Girders) ex HHL Mississippi (Poland)



Kocks Crane Parts (E & M Houses) in Assembly Area ex *HHL Mississippi* (Poland)



Kocks Crane Parts (Legs) ex *Texel* (Vietnam)



Potential Expansion Sites



Strategic Master Plan

- Existing Port capacity
 - Consulting team met with existing tenants, customers, & tenants to determine operational requirements
 - Key findings:
 - * With 2 new cranes, the Port can accommodate an additional container user & new Dole calls, but after that it will be difficult to handle further organic growth
 - * Backland is also operating at-capacity for existing users, especially Dole & Chiquita
- Market Demand Forecast
 - The prospects for trade growth
 - * Positive outlook for the next 5 years with volume gains in 4% to 8% range
 - * Longer term volume gains will be limited to 2% yearly, owing to changing demographics & customer behaviors

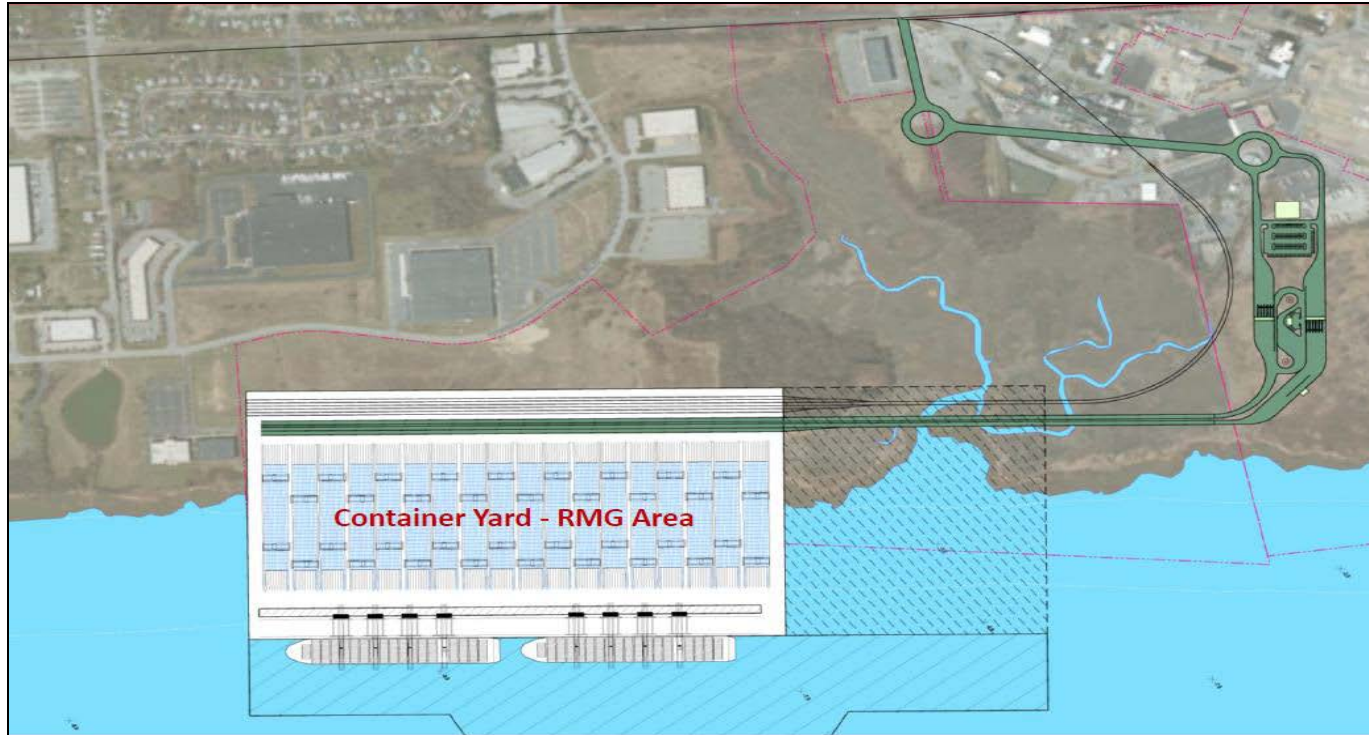
SMP Alternative – Expand Existing Port



Objectives

- } Expand gantry crane range by extending rail to Berth 7 and to the floating berth
- } Shift from palletized cargo for fruit containers
- } Relocate petroleum operations to Ro-Ro berth to alleviate dredging issues
- } Create additional backland to support expanded container operations
- } Relocate/Reconfigure main gate
- } Move non-water dependent uses off terminal
- } Alleviate dredging issues at existing petroleum berth
- } Utilize Pigeon Point Landfill (ro-ro, power)

SMP Alternative – Expand Existing Port + Riveredge Terminal



Objectives

- } Create new container terminal to capture projected growth of container traffic at Riveredge
- } Rail connection to double-stack clearance corridor
- } Roadway access to interstate network
- } Make other improvements at the existing Port, similar to Alternative.

Cost Estimate Comparison of Alternative Sites

Alternative Cost Comparison (in \$2016 Millions)				
Key Item	Alternative 2B	Alternative 2C	Alternative 3	Alternative 4
	WHS River	WHS Land	Riveredge	Edgemoor
Property Acquisition	-	-	-	-
Berth/Yard/Buildings				
Dredging	-	\$ 33.3	\$ 87.3	\$ 18.5
Berth Structure	\$ 674.8	\$ 118.1	\$ 118.1	\$ 118.1
Yard/Earthwork	\$ 103.7	\$ 56.8	\$ 157.1	\$ 16.7
Buildings	\$ 2.3	\$ 2.3	\$ 10.2	\$ 10.2
Demolition	-	-	-	\$ 28.2
Civil Infrastructure	\$ 76.0	\$ 94.7	\$ 103.1	\$ 110.0
Internal Access Road/Gate/Rail				
Access Rd/Infrastructure	-	-	\$ 87.2	-
Gate	\$ 2.2	\$ 2.2	\$ 4.1	\$ 4.1
Rail	\$ 3.6	\$ 3.6	\$ 4.9	\$ 1.8
Permitting/Design/CM	\$ 80.6	\$ 31.8	\$ 50.0	\$ 32.1
Infrastructure Subtotal	\$ 943.1	\$ 342.8	\$ 622.0	\$ 339.8
Equipment				
Reefer & Scales	\$ 31.6	\$ 31.6	\$ 31.6	\$ 31.6
Cranes/Yard Eq.	\$ 119.4	\$ 119.4	\$ 228.8	\$ 119.4
Alternative Total	\$ 1,094.1	\$ 493.8	\$ * 882.4	\$ ** 490.8

Chemours Edgemoor Property

Property and Assets

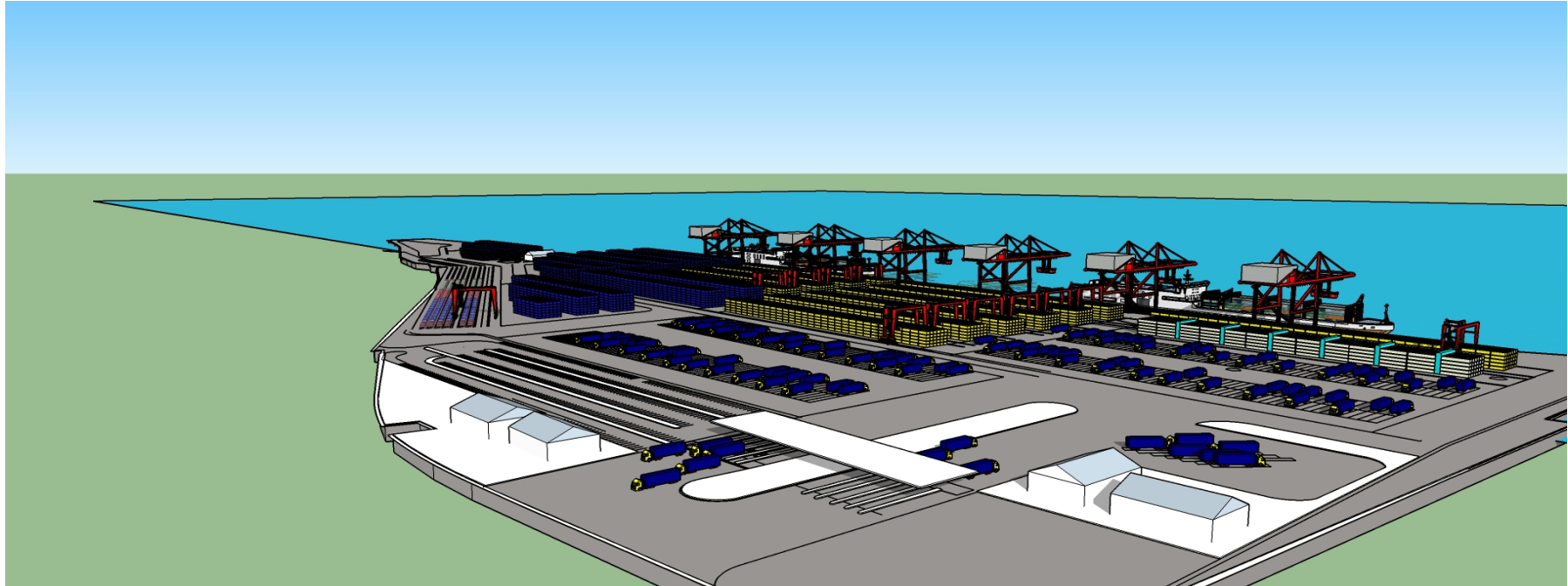
Located on the banks of the Delaware River in New Castle County, Delaware, this property offers a significant redevelopment opportunity in the vibrant greater Philadelphia-Wilmington market. The 112 acre industrial parcel is located north of the City of Wilmington in the Edgemoor section of New Castle County.

- Location:** 104 Hay Road
New Castle County, DE
- Region:** Greater Philadelphia, Southern New Jersey and Delaware Region
- Acreage:** 112 total acres; ~87 developable
- Zoning:** Heavy Industrial
- Access:** Excellent Interstate 495 access, including dedicated highway exit
- Rail :** Norfolk Southern line
Close proximity to Edge Moor yard
- Deep Water:** Delaware River frontage
Close to the Port of Wilmington.
- Utilities:** Significant available capacity

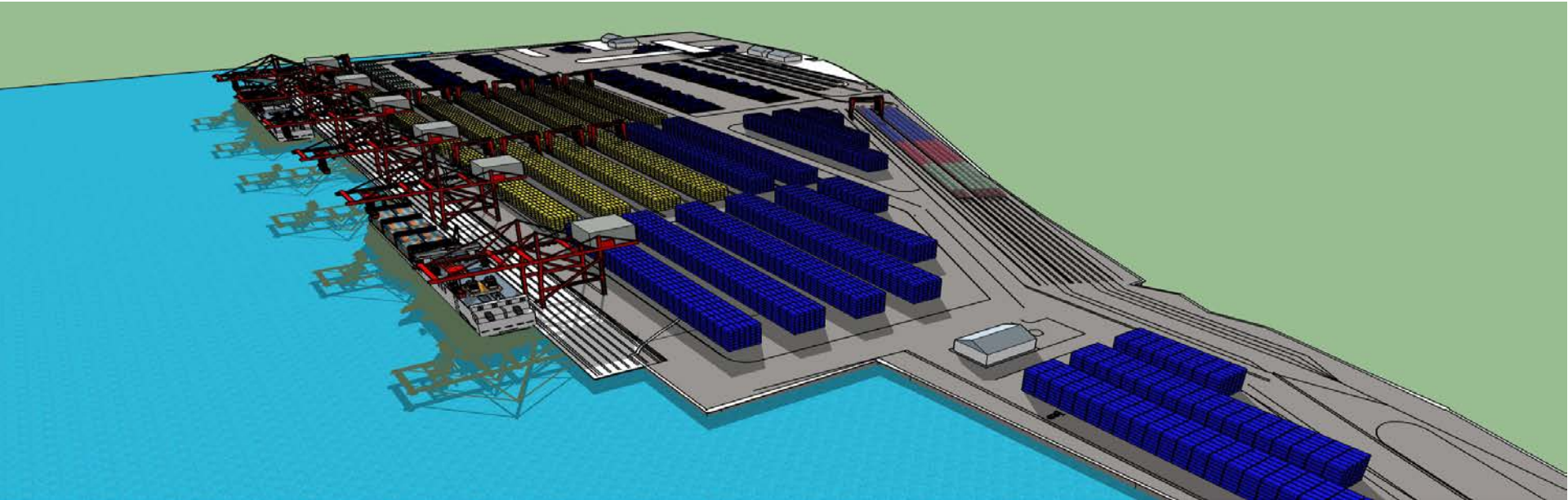
Edgemoor Chemours Property



Edgemoor Chemours Property



Edgemoor Chemours Property



Secretary's Update

DeIDOT

Excellence in Transportation

Every Trip. Every Mode. Every Dollar. Everyone.

▶ **Every Trip**

- We strive to make every trip taken in Delaware safe, reliable and convenient for people and commerce.

▶ **Every Mode**

- We provide safe choices for travelers in Delaware to access roads, rails, buses, airways, waterways, bike trails, and walking paths.

▶ **Every Dollar**

- We seek the best value for every dollar spent for the benefit of all.

▶ **Everyone**

- We engage and communicate with our customers and employees openly and respectfully as we deliver our services.



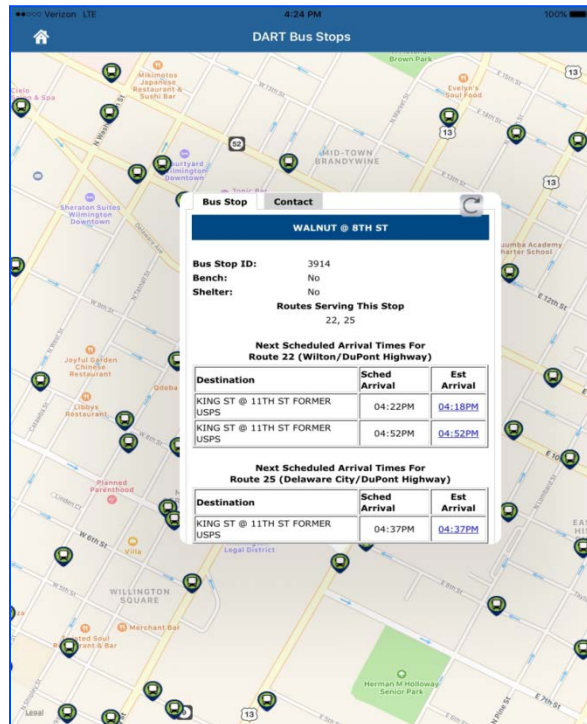
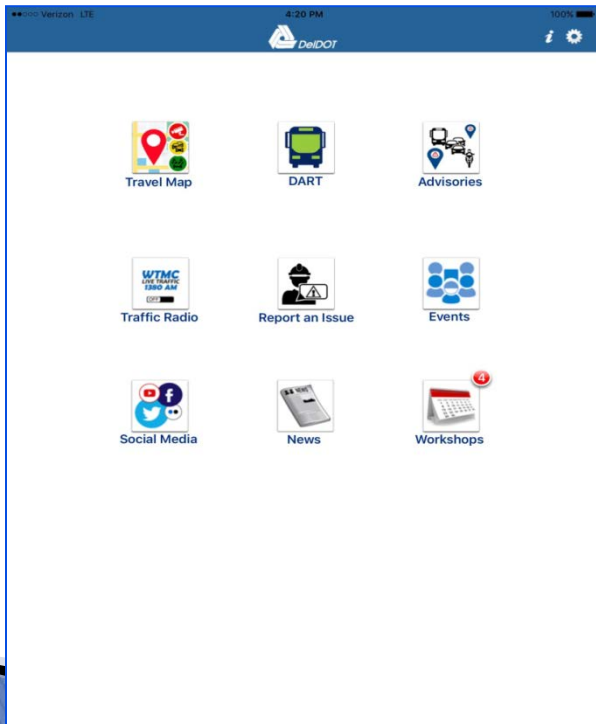
Highlights of Innovations in the Coming Year

- ▶ Diverging Diamond Interchange
- ▶ Accelerated Bridge Construction
- ▶ DMV on the Go and Online Services
- ▶ CTF – Mapping Enhancement
- ▶ Advancements in DeIDOT App
 - DART



DeIDOT Innovation in Action

DART Real Time Bus Information on DeIDOT Mobile App



DeIDOT Innovation in Action

DMV Online Road Test Scheduler

<https://services.dmv.de.gov/mydmv.ejs?command=RoadTestScheduleList>

Citizen Dashboard of Test Status

The screenshot shows the State of Delaware DMV website interface. At the top, there is a search bar and a dropdown menu for "State Services & Information". Below this is a banner for the "Division Of Motor Vehicles" with the DMV logo and a "class01" button. The main content area is titled "Online Services" and "Road Test Schedule List". It features a table with columns for Appointment ID, Service, Date/Time, Status, and Action. The table contains three rows of data, all with a "CANCELED" status. Below the table is a "CREATE APPOINTMENT" button. On the left side, there is a "Home" section with links to Director's Message, About Agency, and other services. On the right side, there is a "MyDMV Menu" with links to Online Services, My Driving Record, My Vehicles, My Road Test Scheduler, My User Profile, Change Password, Logout, and FAQ. At the bottom, there are logos for "DONATE LIFE Delaware" and "MyCarDoesWhat.org".

Appointment ID	Service	Date/Time	Status	Action
1905295-42-0600	Wilmington Class D Driving Test	Apr 4, 2017 1:00:00 PM	CANCELED	
1905295-56-4322	Georgetown Class D Driving Test	Nov 22, 2016 8:00:00 AM	CANCELED	
1905295-66-6801	Dover Class D Driving Test	Oct 7, 2016 8:00:00 AM		

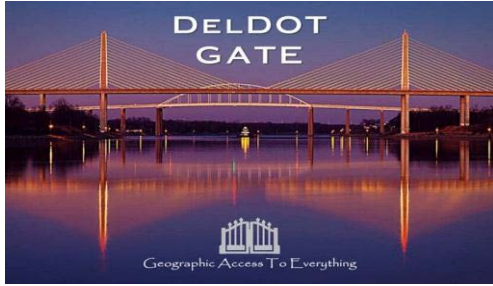
Total Records: 3 (10 per page)

CREATE APPOINTMENT

DeIDOT Innovation in Action

DMV on the GO





DelDOT Innovation in Action

Gateway Interactive Maps

Delaware Airport System
Delaware Department of Transportation

New Castle Airport (ILG)
New Castle Airport is managed by the Delaware River and Bay Authority as a public use general aviation airport that has three major runways, ten taxiways and several aircraft parking ramps. Approximately 68 business jets and 220 propeller aircraft are based here.

New Castle Airport (ILG) Sumner Airport Smyrna Airport Delaware Airport Chambers Estate Airport Jordan Airport DelDOT Helispot Carl Air Terminal - Dover Chambers Airport

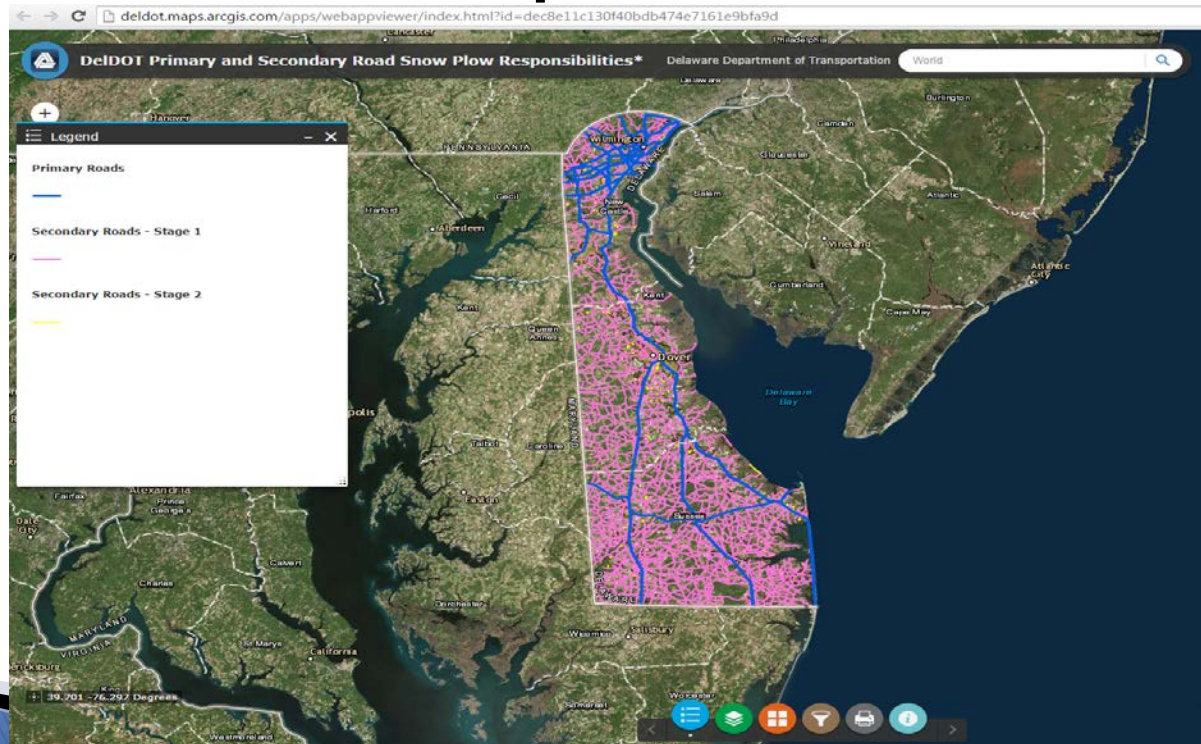
Bicycle/Pedestrian/Trails and Pathways
Delaware Department of Transportation

Legend

- Bike Routes
 - connector
 - regional
 - statewide
- Trails and Pathways
 - Trail
 - Beach Vehicle Crossing

DelDOT Innovation in Action

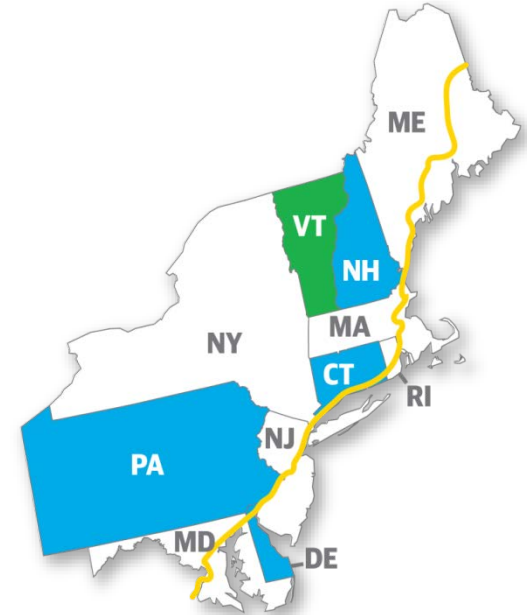
DelDOT Snow Plow Responsibilities



I-95 Corridor Coalition

Mileage Based User Fee Pilot

- ▶ Submitted \$2.98M grant proposal
- ▶ DeIDOT (lead state), PA, CT, NH, VT
- ▶ Key “win” themes
 - ✓ Geographic diversity
 - ✓ Multi-state approach tests national feasibility
 - ✓ Estimating out-of-state usage
 - ✓ Explore varying per-mile rates (e.g., urban/rural, EPA rating)
 - ✓ Highlighting role of DMVs
 - ✓ Coordination / partnership with toll agencies
 - ✓ Positioned to raise public awareness
 - ✓ Actual pilot



LEGEND

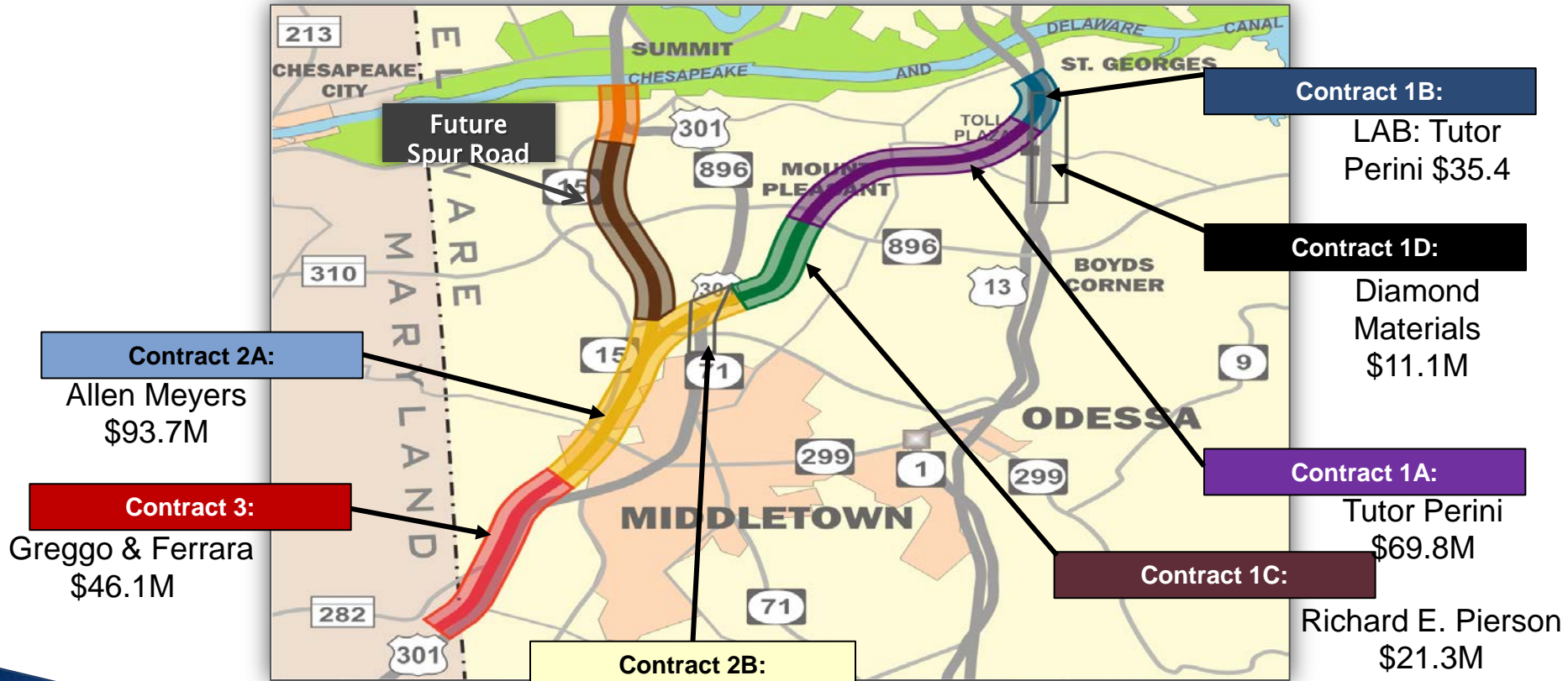
- States participating in planning (component 1) and focused pilot (component 2)
- States participating in planning only (partial)

Project Vision, Goals and Objectives

Objective: Lay the foundation for a viable mileage-based MBUF approach for funding transportation improvements and enable a smooth transition from the current gas tax to this more sustainable and user-based funding source

Goals	Objectives
1. Address regional issues necessary for national adoption and implementation of MBUF	<ul style="list-style-type: none">• Create a low risk environment to address cross state-issues.• Balance the unique needs of each state within a multi-state framework.
2. Increase public acceptance of MBUF	<ul style="list-style-type: none">• Educate the public about transportation revenue challenges and the MBUF solution.• Demonstrate the ease of use and viability of MBUF.• Address privacy concerns.• Address equity issues.
3. Create a low-cost framework to administer MBUF	<ul style="list-style-type: none">• Identify cost-saving opportunities (e.g., standards) through a multi-state approach.• Address legislative barriers to MBUF implementation.• Include DMV and other key stakeholders (e.g., tolling).• Include the private sector.

US 301 Project Overview



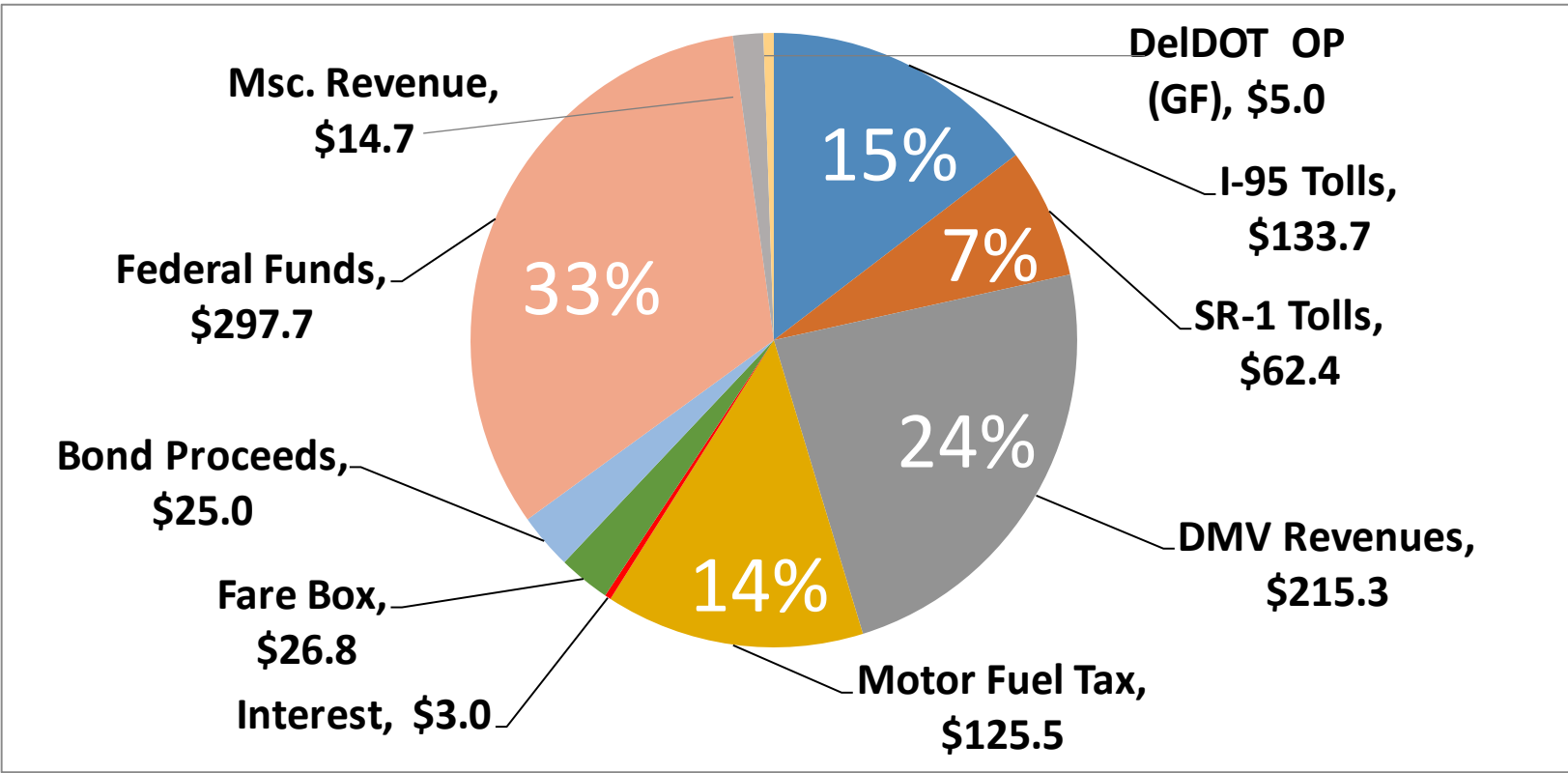
Contract 2B:
Advertisement
Date
Oct. 2016

*Proposed
FY18 Budget*

DeIDOT

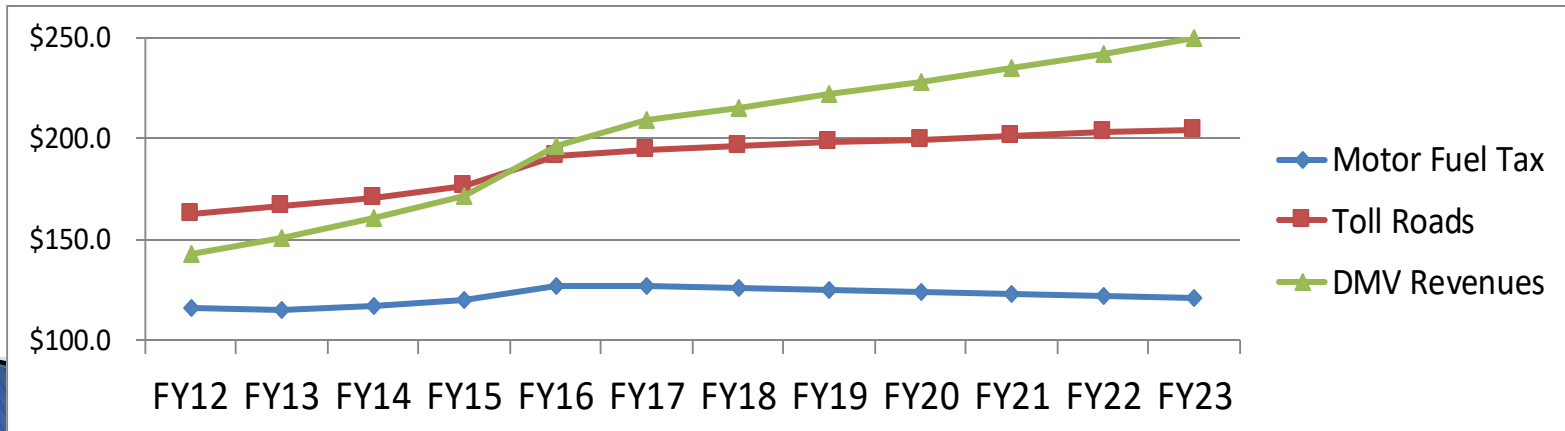
FY2018 – Sources of Funds – \$909.1 M

(in millions)



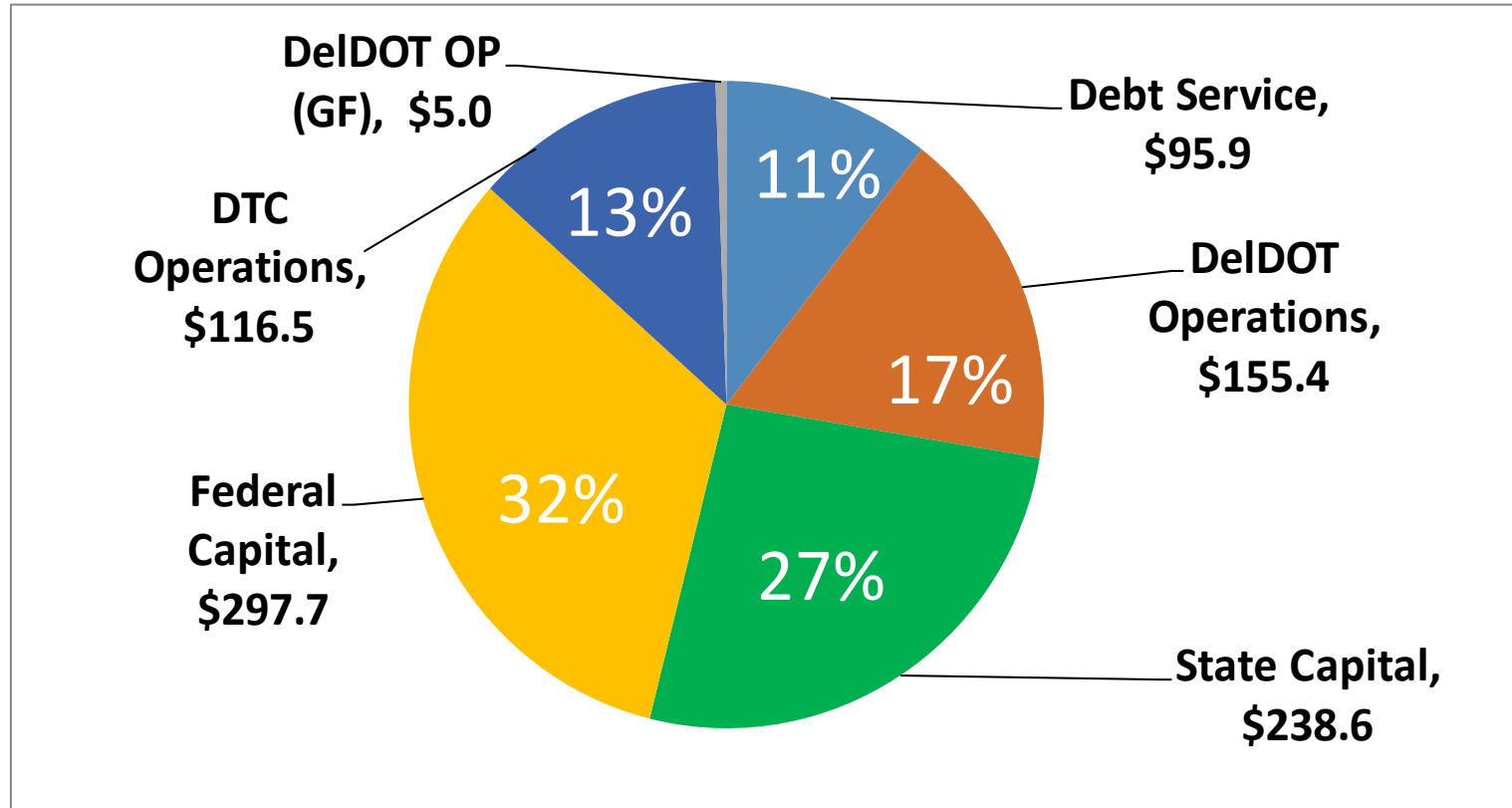
Trust Fund Revenues

Revenues	Forecasted – September 2016 DEFAC											
	FY12	FY13	FY14	FY15	FY16	FY17	FY18	FY19	FY20	FY21	FY22	FY23
Motor Fuel Tax	115.9	115.0	116.9	119.6	126.5	126.5	125.5	124.5	123.5	122.5	121.5	120.5
Toll Roads	162.0	166.3	170.0	176.1	191.0	194.4	196.1	197.8	199.5	201.2	202.9	204.5
DMV Revenues	142.7	150.5	160.3	171.0	196.7	209.0	215.3	221.7	228.3	235.2	242.2	249.5
	420.6	431.8	447.2	466.7	514.2	529.9	536.9	544.0	551.3	558.9	566.6	574.5



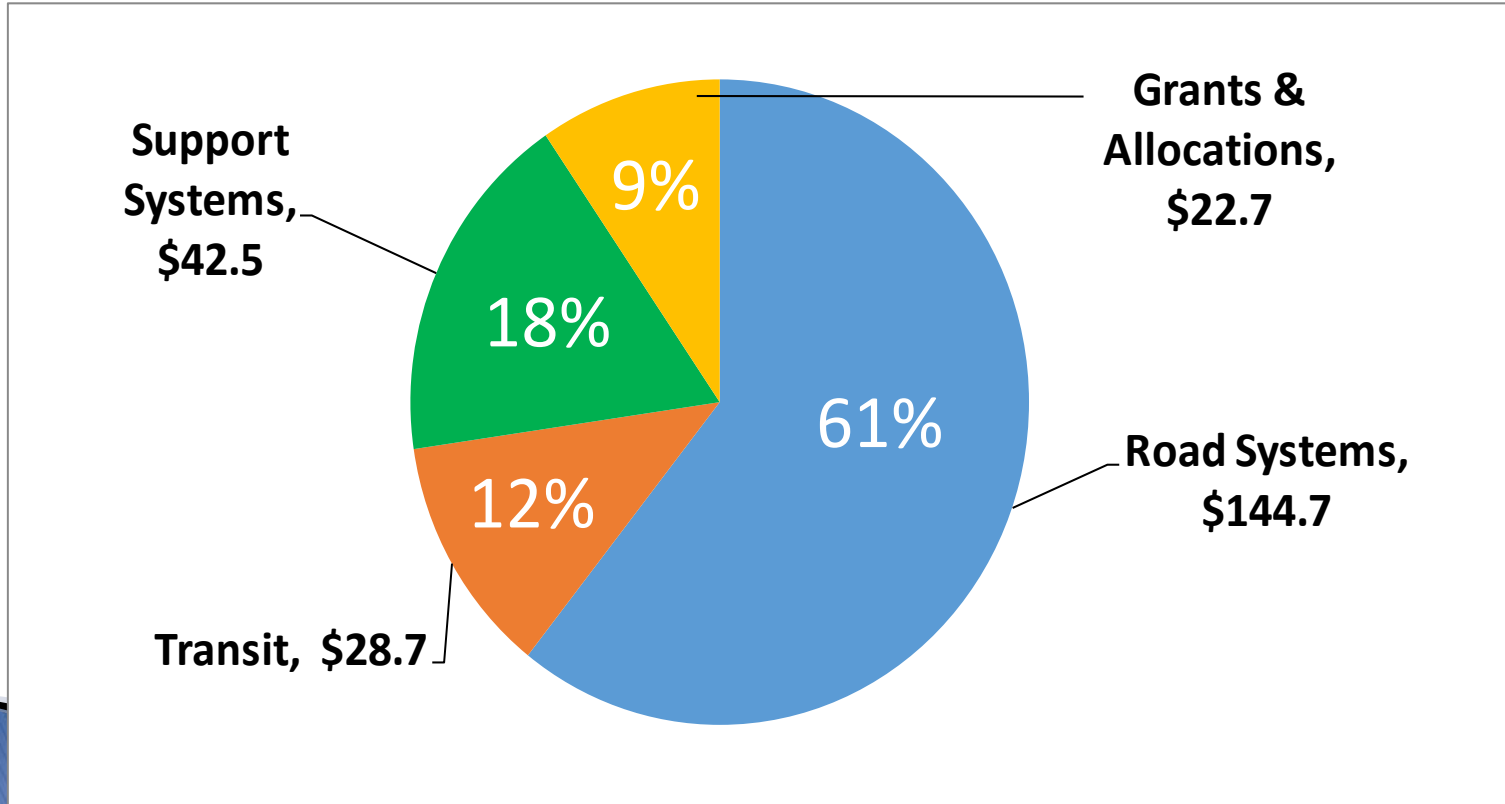
FY2018 – Sources of Funds – \$909.1 M

(in millions)



FY2018 – State Capital Categories – \$238.6M

(in millions)



*Review of Public
Comments from CTP
Hearing*

DeIDOT



Proposed FY 18 Capital Program

- ▶ Increase in State of Good Repair
 - Paving Program
 - Bridge Preservation
 - I-95 Bridge Deck
 - Corrugated Metal Pipes
- ▶ Increase in ADA Improvements
- ▶ Community Transportation Funds
- ▶ Municipal Street Aid



CTP Hearing Summary

- ▶ Coordinated with the Wilmington Metropolitan Area Planning Council, Dover/Kent Metropolitan Planning Organization, Salisbury Wicomico MPO, and Sussex County
- ▶ Highlighted New Projects Added to 6 year CTP
- ▶ Specific Project Information



CTP Hearing Summary

- ▶ New Castle County – August 31, 2016
 - 16 attendees
 - 1 written comments
 - 3 statements via the official transcript
- ▶ Kent County – September 19, 2016
 - 16 attendees
 - 4 written comments
 - 0 statements via the official transcript
- ▶ Sussex County – September 28, 2016
 - 33 attendees
 - 11 written comments
 - 0 statements via the official transcript



CTP Hearing Comment Summary

▶ New Castle County

- Invest in all modes including port expansions, rail and airports. Developers should pay for road improvements.
- Extend Marc service to Newark. Passenger rail to Ocean City MD using the Delmarva Secondary freight line. Increase DTC service to Kennett Square
- Comment to fix bridge 1 - 216.
- Support funding for the Newark to Wilmington Bike project



CTP Hearing Comment Summary

▶ Kent County

- Concerns about impacts of the Camden Bypass project on neighborhoods
- Property owners wanting to be involved in the Camden Bypass Projects
- Positive comments for the Kenton Road Project
- Comment of support for the NE Front Street Interchange Project in Milford



CTP Hearing Comment Summary

- ▶ **Sussex County**
 - Support for the Millsboro Bypass Project
 - General comment on maintenance of signs and ditches
 - Comment on Legion Road closure
 - Focus on expanded transit
 - Concerns with turning movement on SR24 and SR9
 - Continued investments on alternative transportation modes
 - Desire for SR1 and Cave Neck to be constructed prior to SR1 and SR16
 - Request to add Kings Highway to the Capital Transportation Plan



CTP Path Forward

- ▶ Based on the public comment process DeIDOT is not recommending any changes to the proposed plan, however we will use the comments received in the development of the specific projects
- ▶ Continued refinement of the spend plan – based on project schedules
- ▶ Present any modifications or changes prior to the meeting in February
- ▶ Plan Adoption by COT by March 1, 2015

Questions & Comments

DeIDOT