

# Delaware Department of Transportation Council on Transportation

February 22, 2024





# Agenda

- ▶ Review and Approval of Meeting Minutes (December 14, 2023)
- ▶ Review and Approval of FY25 – FY30 Capital Transportation Program (CTP)
- ▶ Long Range Transportation Plan Presentation
- ▶ Prioritization Process Update
- ▶ Public Comment



# Meeting Minutes Review / Approval



## **Excellence in Transportation.**

*Excellence in Transportation*

### **Every Trip.**

We strive to make every trip taken in Delaware safe, reliable and convenient for people and commerce.

### **Every Mode.**

We provide safe choices for travelers in Delaware to access roads, rails, buses, airways, waterways, bike trails, and walking paths.

### **Every Dollar.**

We seek the best value for every dollar spent for the benefit of all.

### **Everyone.**

We engage our customers and employees with respect and courtesy as we deliver our services.



# SAFETY

## 2024 Delaware Traffic Fatalities as of 2/19/2024

	2024	2023		2022	
		Year-to-Date	Totals	Year-to-Date	Totals
<b>Fatalities</b>	<b>12</b>	21 ↓ -43%	137	24 ↓ -50%	164
Delaware Residents	10	18 ↓ -44%	120	20 ↓ -50%	119
<b>Person Types</b>					
Vehicle Occupant	8	14 ↓ -43%	89	18 ↓ -56%	103
Pedestrian	4	4 0%	28	5 ↓ -20%	32
Bicyclist	0	2 ↓ -100%	5	1 ↓ -100%	7
Motorcyclist	0	1 ↓ -100%	15	0 N/A	22
<b>Crash Types</b>					
Curve Related	2	5 ↓ -60%	28	4 ↓ -50%	19
Roadway Departure	5	9 ↓ -44%	69	7 ↓ -29%	55
Intersection Related	3	6 ↓ -50%	37	6 ↓ -50%	50
Median Crossover	0	0 N/A	8	0 N/A	8
Wrong Way	1	0 ↑ N/A	1	1 0%	7
Work Zone	0	3 ↓ -100%	9	0 N/A	4





# FY25-30 CTP – 13 New Projects \$15.25M

## New Castle County – 5 new projects:

US 40 between US 13 to MD Line Multimodal Improvements	\$1M PD
Hares Corner (US13 and SR 273) Grade Separated Intersection	\$3M PD
Governor Printz Blvd Rd Diet between US 13 at Philadelphia Pike & East 35 <sup>th</sup> St	\$1M PD
St. Annes Church Rd at SR 71 Intersection Improvements	\$1M PE
Bunker Hill Rd at Sand Hill Dr & Merrimac Ave Intersection Improvements	\$500k PD
	<b>\$6.5M total</b>

## Kent County – 2 new projects:

US 13 at White Oak Rd	\$250k PD
Banning St and Clarence St between Forrest St & W. North St Improvements	\$500k PD
	<b>\$750k total</b>

## Sussex County – 6 new projects:

Hudson Rd between Route 9 and Route 1 Improvements	\$1M PD
US 9 between Old Vine Blvd and Dairy Farm Rd Improvements	\$1M PD
Redden Rd Corridor Improvements, US 13 to US 113	\$2M PD
SR 24 between Love Creek Bridge and Indian Mission Rd Improvements	\$3M PD
Zoar Rd at South Bedford St Intersection Improvements	\$500k PD
Phillips Landing Rd between Mt. Pleasant Rd and Phillips Landing Improvements	\$500k PD
	<b>\$8M total</b>

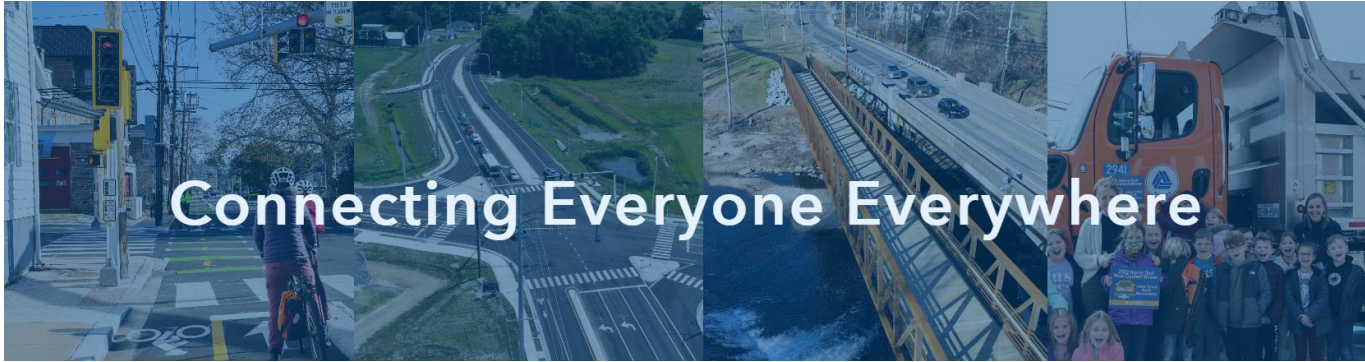


# FY25-30 Capital Transportation Program

COT Discussion and Vote to  
Adopt CTP



# DelDOT Long Range Transportation Plan



## Presentation Outline

- Overview of the LRTP and requirements
- Main concept and document structure
- Schedule and public engagement
- Questions





# What is a Long-Range Transportation Plan (LRTP)?

## Federal Transportation Planning Requirement

23 USC 135: Statewide and Non-Metropolitan Transportation Planning

- **Policy-based:** Strategies focused on policy development to address state transportation needs (majority of state LRTPs are policy-based).
  - **20-Year Horizon** Vision Document
  - In **Cooperation** with Designated Metropolitan Planning Organizations (MPOs)
  - Connects **Transportation Goals** to Project Prioritization
  - Foundation for development of **Transportation Improvement Program (TIP)**
  - **Financial** Projection Component

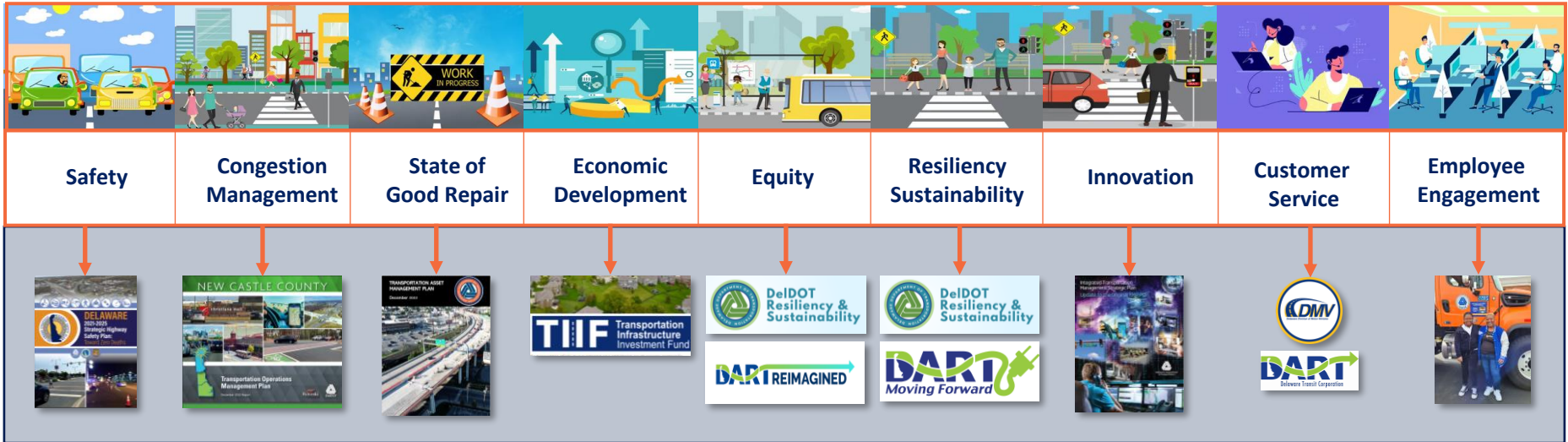
# BIG CONCEPT

## Develop a Plan that connects DeIDOT's Mission and Goals with our current and future strategies

- Identify and Explore **Transportation Trends, Topics and Challenges** that impact DeIDOT and our customers
- Structure the Plan to align with elements found in the DeIDOT's **Framework For Excellence**
- Establish a **dynamic website** to showcase related strategic plans that engage and inform people in a concise and comprehensive way
- Harness New Methods and Technologies to **Engage and Educate Stakeholders**



# Framework for Excellence



← Supporting Strategies, Policies and Initiatives →





# L RTP Chapter Structure

- Background - Trends, Goals, Performance Measures
- How are we going to meet the goals?
  - Existing strategic plans and new future goals and strategies
- Project Spotlight
- Additional Resources
  - Links to supporting strategic plans, policies, or programs





## Final Product

- 30–50-page document for Council on Transportation (COT)
- Website containing:
  - Executive Summary
  - Full Plan Content
  - Repository and resource for DeIDOT Strategic Plans





# Timeline

## “Concept Development”

- Trends
- Opportunities & Challenges
- Research

## “Data Collection”

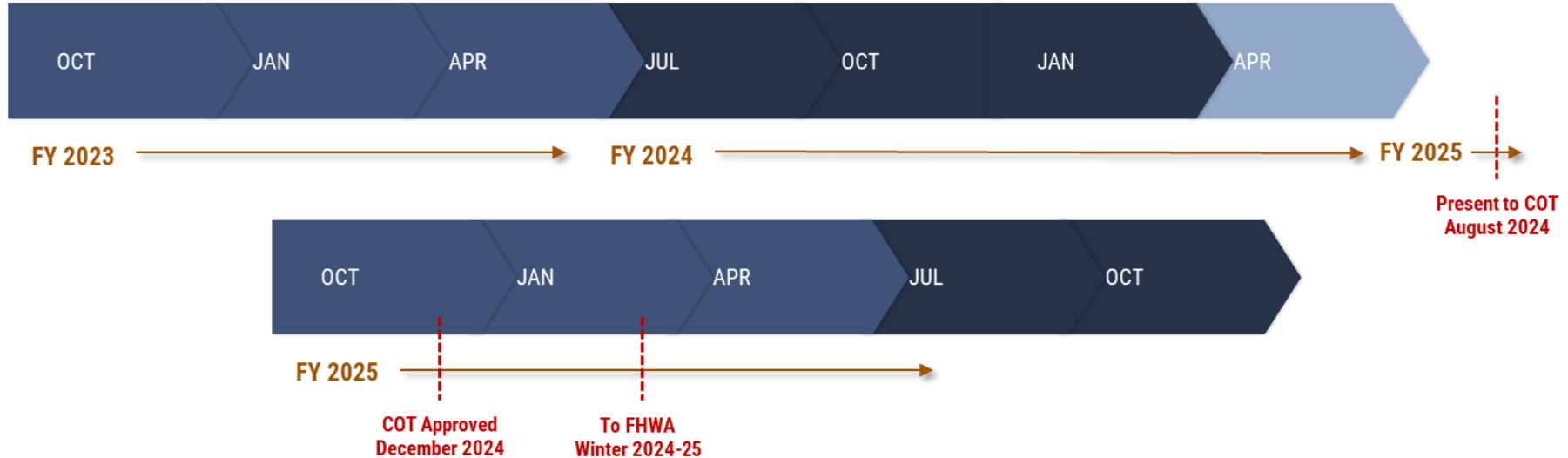
- DeIDOT “inreach”
- Research
- Public outreach Plan

## “Plan Development”

- MPO Outreach
- Analysis & Evaluation
- Strategies & Options
- Policies & Programs
- Internal Review
- Public Outreach

## “Production”

- Website
- Video
- Short Documents



# Public Engagement

## 2023-2024

- MPO outreach
- Website
- Social Media
- Survey
- State Fair
- Elementary School Drawing Contest

## Upcoming Events (April-May)

- New Castle County – Wilmington Public Library
- Kent County – Dover Public Library
- Sussex County – Georgetown Public Library




# Public Input Webpage

LRTP Web Site (arcgis.com). Please take a moment to fill out the survey below to share your thoughts on the transportation priorities we should consider as'."/>

DelDOTInteract > DelDOT Long Range Transportation Plan Update

## Connecting Everyone Everywhere

 DelDOT Long Range Transportation Plan Update

DelDOT has begun the process of updating our Plan with an estimated 2024 completion date. Over the coming months, we look forward to engaging with you to gather your comments and suggestions to help us provide a first class transportation system that helps to connect all Delawareans.

The purpose of a Long Range Transportation Plan is to identify broad goals, policies and priorities that will serve as a framework for shaping DelDOT's transportation investments and decision-making over the next 20 years. To learn more about this planning effort check out the project website linked here: [LRTP Web Site \(arcgis.com\)](http://LRTP.Web.Site.arcgis.com).

Please take a moment to fill out the survey below to share your thoughts on the transportation priorities we should consider as

## Survey

- Priorities
- Challenges
- Impacts over next 20 years



# Prioritization Criteria February 2020

## COT Prioritization Process Criteria

February 24, 2020

### 35% Safety

- Crash Index
- Critical Crash Ratio
- Strategic Highway Safety Plan

### 19.1% System Operating Effectiveness

- Existing Congestion Level
- Congestion Management

### 11.9% Multi-Modal Mobility/Flexibility/Access

### 13.1% Revenue Generation/Economic Development/Jobs & Commerce

- Economic Impact
  - Percent Change in Employment
  - Percent Change in GDP
- TID
- Cost Sharing Support
- Freight Corridor

### 8.3% Impact on the Public/Social Disruption/Economic Justice

- Impact on Public
- Social and Health Elements

### 6.6% Environmental Impact/Stewardship

### 6.1% State and Local Priority

- Delaware Strategies for State Policies and Spending



# Prioritization Process Update



## DelDOT Resiliency & Sustainability

Sustainable transportation considerations and solutions are focused on striking a balance between economic, social, and environmental principles in a manner that supports the ongoing planning, development, operation, and maintenance of an 'enduring' transportation system.



### MISSION

To provide the citizens of Delaware with the most resilient and sustainable transportation infrastructure through effective project planning, design, construction, and maintenance along with incorporation of innovative solutions such as alternative energy and electrification of our infrastructure to address the challenges associated with climate change and sea level rise.

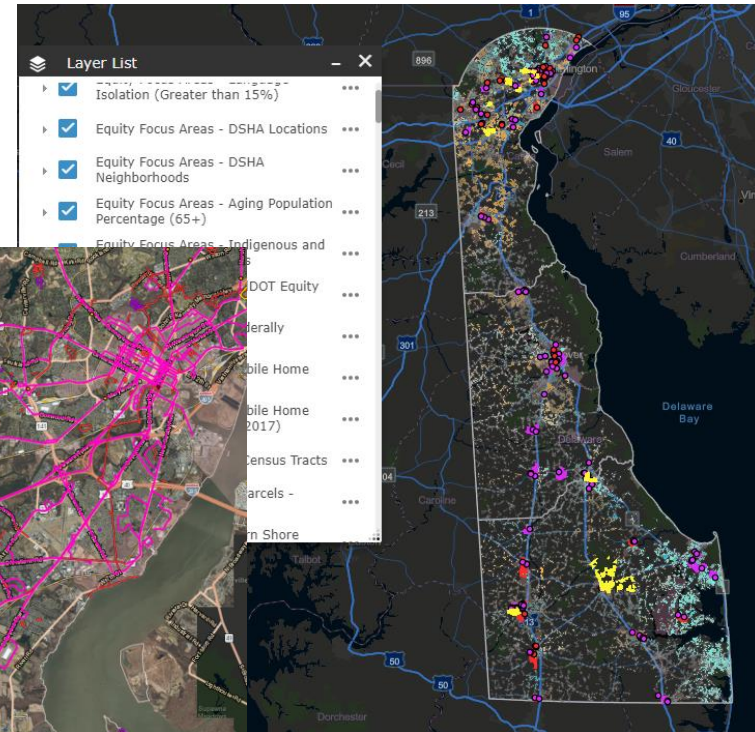
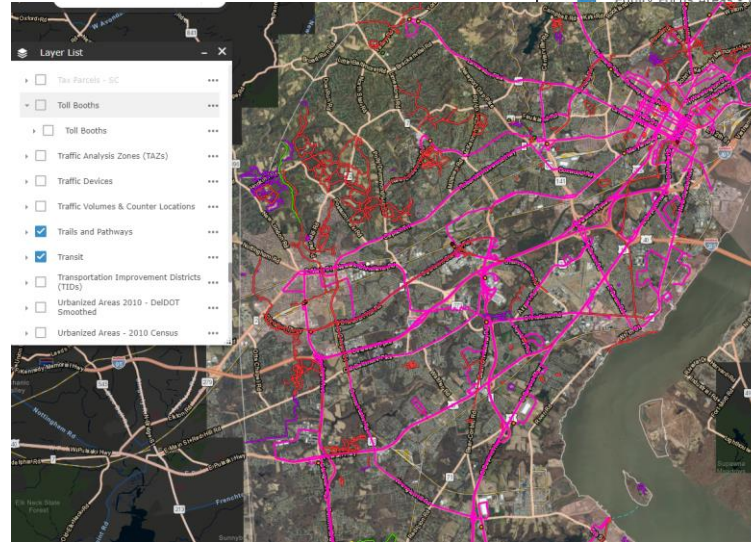
### CHALLENGE

Due to the low-lying topography of the state, creating resilient infrastructure in the face of roadway flooding becomes a challenge. DelDOT has been and continues to be challenged by the effects of sea level rise (SLR) and frequently flooded roadways. It has been estimated the state has \$1 billion of infrastructure at risk associated with these challenges.

### STRATEGIES

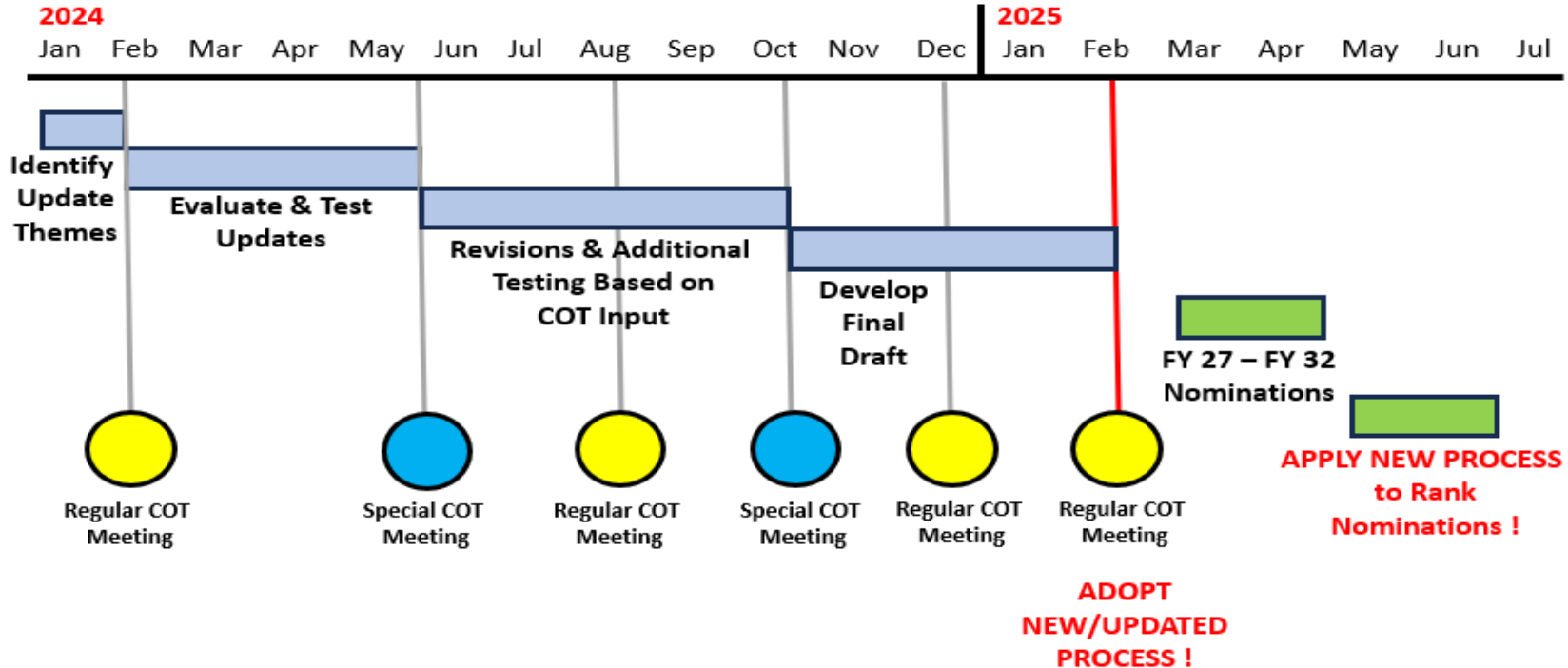
With so many factors, there can be no 'one size fits all' solution. DelDOT currently makes decisions about SLR on a case-by-case basis, with careful considerations and unique strategies.

DelDOT is actively developing policies on how to spend our capital to protect and maintain assets affected by SLR. DelDOT's guidance and direction will be in line with Statewide policies to ensure a consistent approach.





# Capital Transportation Project Prioritization Process





# Public Comment