

DATA STATUS UPDATE

Stay up to date on Delaware's transportation data! Brought to you by the Integration of Operations and Planning Advisory Committee.

PROGRAM PILLARS OF INTEGRATION OF OPERATIONS AND PLANNING



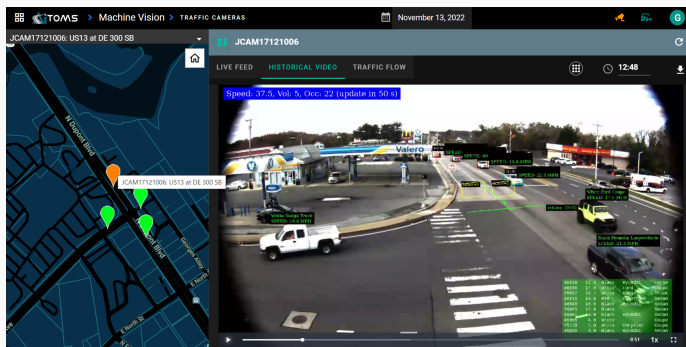
1. New Technologies
2. Data Collection & Access
3. Data Applications
4. Public Education

BIG DATA *New Technologies*

"Big data" is a term that's becoming a part of the everyday vernacular in transportation, but what is it? Simply put, big data generally refers to large data sets that are too large or complex to be processed or managed with traditional methods. In transportation, these large-scale data sets are expanding every second, everywhere, via sources like GPS systems in cars and mobile applications on phones.

Access to so much data creates new opportunities for engineers and planners, giving us the ability to better understand what is happening on our roads. Advisory Committee members have already identified big data opportunities in Delaware, such as applying origin-destination data for transit planning, narrowcasting traveler communications, and identifying truck parking needs along interstates.

One of DeIDOT's ongoing big data efforts is incorporating artificial intelligence (AI) into its integrated management



system. The types of data, such as volume, classification, and speed, may not be new, but the scale is vastly larger. AI expands the capacity of DeIDOT's technicians to monitor traffic in real time, giving DeIDOT the ability to make its system much more adaptive and predictive day to day, while helping DeIDOT meet federal reporting requirements. The screenshots below shows an example of one of DeIDOT's AI pilot locations in Smyrna, where the AI system identifies each vehicle's type and movement as it drives by a camera.

Of course, every big data opportunity brings its challenges.

[FHWA's Data](#)

[Governance Plan](#)

outlines some key data issues that DeIDOT and other agencies must keep in mind they dive deeper into big data, including:

- Identifying which data are valuable and necessary for decision-making
- Standardizing approaches to address existing data and new data needs
- Identifying real and perceived data quality issues
- Integrating data across offices and divisions
- Accessing needed data
- Staying up to date with changes in computer technology and electronic data storage standards
- Maintaining security and accessibility

DeIDOT and other agencies need to continue to document findings and to share lessons learned. Committee members can help by continuing to stay in touch about their uses and best practices.

To continue the conversation, contact

Andrea Trabelsi at Andrea.Trabelsi@delaware.gov



IN OTHER NEWS...

- The New Castle County Transportation Operations Management Plan (TOMP) is nearly complete! For more information, check out the TOMP webpage: <https://deldot.gov/Programs/itms/index.shtml?dc=tomp>
- DeIDOT is in the process of uploading its 24/7 operations data to its Google Cloud platform! Once the data transition is complete, users will be able to access EOps data off-network via the Google Cloud. For a smooth transition, please make sure you already have access to DeIDOT's Extranet webpage: <https://tmc.deldot.gov/tmcx/app/login?0>