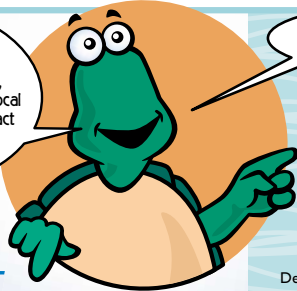


If you want to learn more about water and what you can do to help keep it clean, or how you can contact your local watershed group, please contact the following organizations:



Also, check out these exciting websites for more water wisdom:

- Academy of Natural Sciences
www.acnatsci.org
- Center for Watershed Protection
www.cwp.org
- Delaware Audubon Society
www.DelawareAudubon.org
- Delaware Chapter of The Nature Conservancy
<http://nature.org/states/delaware/>



Delaware Department of Transportation
P.O. Box 778
Dover, DE 19903
(In-state) 1-800-652-5600
(Local or Out-of-state) (302) 760-2080
Email: public-relations@mail.dot.state.de.us
Website: www.deldot.net



Partnership for the Delaware Estuary
400 West 9th Street, Suite 100
Wilmington, DE 19801
302-655-4990
1-800-445-4935

Fax 302-655-4991
Email: dross@DelawareEstuary.org
Website: www.DelawareEstuary.org

Designed and Illustrated by Frank McShane
Printed on Recycled Paper

- Delaware Chapter of the Sierra Club
www.delaware.sierraclub.org/
- Delaware Department of Natural Resources & Environmental Control
www.dnrec.state.de.us
- Delaware Nature Society
www.delawarenaturesociety.org
- Delaware Riverkeeper Network
www.delawariverkeeper.org
- Stroud Water Research Center
www.stroudcenter.org
- University of Delaware
http://ag.udel.edu/extension/information/nps/nps_home.html
- U. S. Environmental Protection Agency's Office of Water
www.epa.gov/ow/
- U.S. Environmental Protection Agency's Watershed Website
www.epa.gov/watershed/
- U. S. Fish & Wildlife Service
www.fws.gov/

SPONSORED BY:



Let's Learn About Water!



Wise Water Use is Important!

Hey Kids! We use water every day, in so many ways! When we pollute the land we pollute our water. Rain washes the trash and pollutants on the ground into our local streams or into the sewer inlets, which lead to our drinking water supply! Dive into this game and learn about the many uses of water, both good and bad, and discover why water is so important!



START HERE
CITY OF WILMINGTON

ONE WAY

Go to a car wash that recycles water. MOVE AHEAD 2 SPACES

Go Swimming at a community pool. MOVE AHEAD 1 SPACE

Leave the faucet dripping for days. GO BACK 1 SPACE

Wash the dishes! MOVE AHEAD 3 SPACES

Water your lawn excessively. GO BACK 2 SPACES

Take a really long shower. LOSE A TURN

Brush your teeth. MOVE AHEAD 1 SPACE

CITY OF NEWARK

DIRECTIONS:

1. Find an eraser, paper clip, stick of gum or other game piece and place on "START HERE."
2. Flip a coin when it's your turn: HEADS, move 1 space ahead TAILS, move 2 spaces ahead
3. The first one to "FINISH" wins. HAVE FUN!

move 1 move 2

page 1

ONE WAY

Water the house plants. MOVE AHEAD 1 SPACE

A rainy day waters our environment. GO AGAIN!

Pour paint thinner down the drain. GO BACK 3 SPACES

Fertilize your lawn right before it rains. GO BACK 2 SPACES

MILFORD

Don't Dump anything into storm drains! They drain into our streams, creeks, and rivers.

Throw litter into the street. GO BACK TO START!

CITY OF DOVER

Shovel the snow to a SHORTCUT!

Pour oil into a storm drain. GO BACK 3 SPACES

Drink a glass of water! GO AGAIN

SMYRNA

Drink a glass of water! GO AGAIN

Mop the Kitchen. MOVE AHEAD 1 SPACE

A rainy day waters our environment. GO AGAIN!

Boil vegetables. MOVE AHEAD 1 SPACE

Use toxic substances, such as drain cleaner or moth balls. GO BACK 3 SPACES

Help mom with the laundry. MOVE AHEAD 2 SPACES

Drink a glass of water! GO AGAIN

LEWES

Open up a fire hydrant in the summer. GO BACK TO START!

FINISH
DELAWARE BEACHES

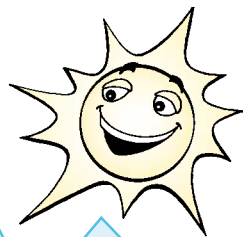
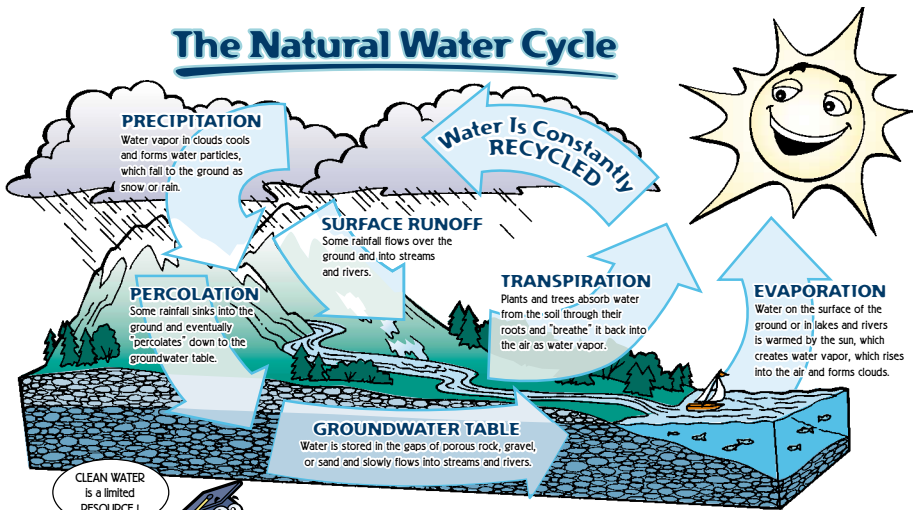
SPEED LIMIT 55

Your body needs 8 glasses of water every day!

Can You List Other Ways We Use Water?

page 2

The Natural Water Cycle

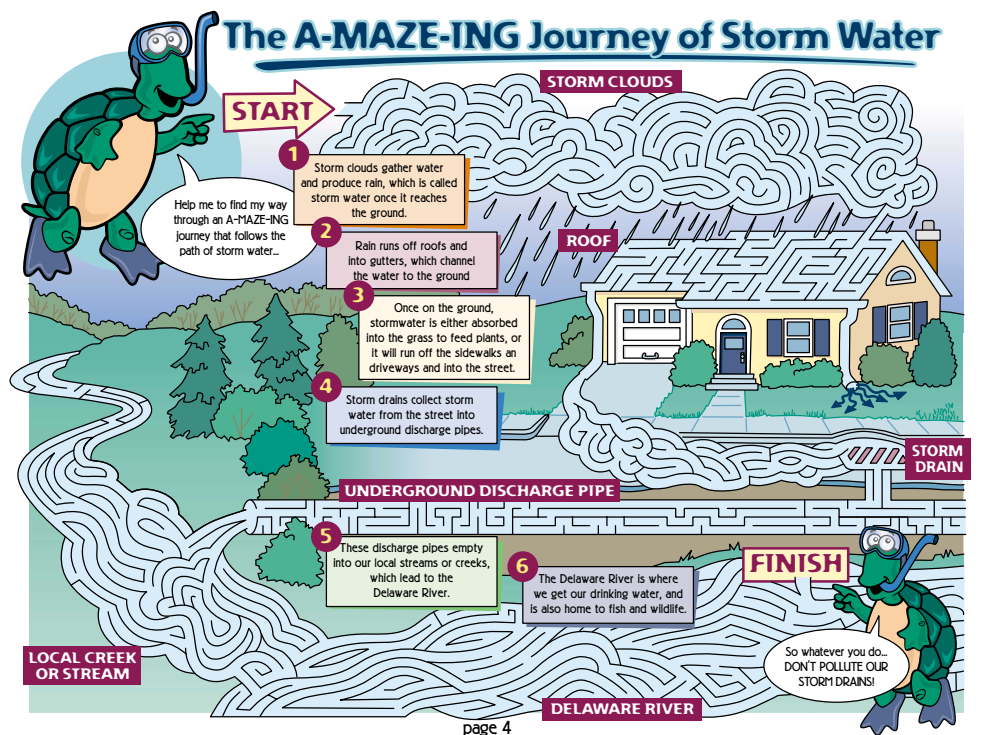


The SAME water that the Dinosaurs drank...is the SAME water that we drink today. Water is constantly recycled and reused over and over again!



Doesn't that make your head SWIM?

The A-MAZE-ING Journey of Storm Water



How Can You and Your Family Protect Our Water?

Hey Kids! Protecting our **water supply** isn't just an adult thing. Its up to each and every one of us! **Storm drains** in the street (also called **sewer inlets**) are for water only. Philadelphia's rain and melting snow pick up all kinds of **pollutants** as they wash over our **sidewalks**, streets, parking lots and yards. All of this dirty water flows into storm drains, many of which empty into **local creeks** and the **Schuylkill** and **Delaware Rivers**. You can help make our **waterways** safer for **drinking**, **fishing** and **boating** by keeping pollution and trash out of Philadelphia's storm drains.

Follow these 6 Tips:

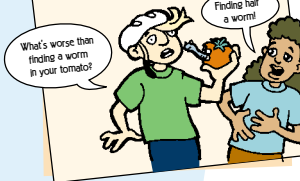
1 Keep **litter** off the **street**. This includes candy wrappers, fast food containers and other **wastes**. Put trash in trash cans and **clean up** street litter so it doesn't get washed or blown into the storm drains.



2 Ask your parents to **service** the **car** regularly to **prevent** oils and other **fluids** from leaking onto the pavement and being washed down the storm drains. People should always **recycle** used motor oil and antifreeze. The car should be moved for street sweepings to allow the city to remove **debris** before it washes down the storm drains.



3 Help your parents expand your garden, and cut down on the size of your **lawn**. Maintaining a **garden** without **chemicals** is easier than maintaining a lawn without chemicals. Use native plants, **mulch**, and plant densely to decrease the need for water, **reduce erosion**, and discourage weeds.



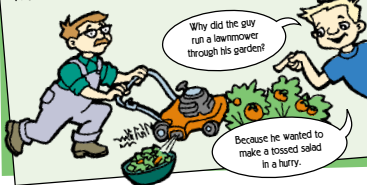
6 Help your parents compost leaves and grass clippings. Next year you will have rich **compost** that can be used to enhance your garden **soil**. If you don't compost, carefully bag your leaves and grass clippings. Leaves and grass clippings placed in the street unbagged will **log** storm drains.



4 You can help **protect** our drinking water by cleaning up after your **dog**. Place dog waste in the toilet or a **trash can**, not in the street or down the storm drain. Dog waste introduces **germs** causing bacteria into our water supply.

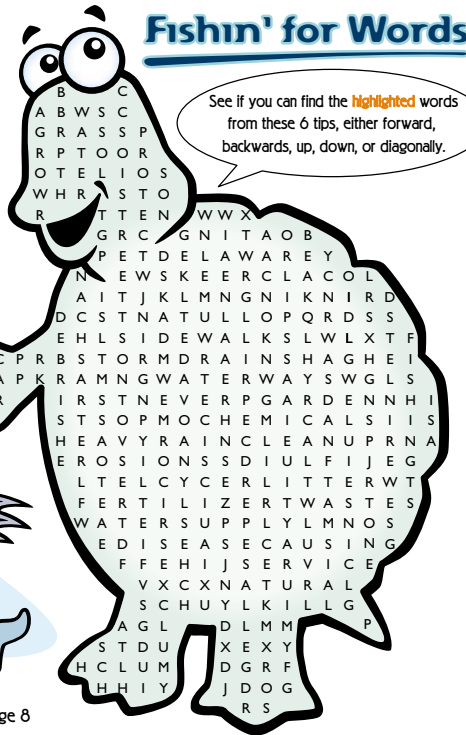


5 Let your grass **grow!** Taller **grass** chokes weeds, so ask your parents to set the mower height at 3 inches, **water** your lawn thoroughly but infrequently to encourage deep **root** systems, use **natural** organic **fertilizer** if you do fertilize (which will release nutrients more slowly than chemical fertilizers), and avoid applying fertilizer before **heavy rain**.



Fishin' for Words

See if you can find the **highlighted** words from these 6 tips, either forward, backwards, up, down, or diagonally.



This hook is giving me a Haddock!

