

1950  
**OFFICIAL ROAD MAP**  
**OF THE STATE OF**  
**DELAWARE**

State Highway Department  
 Dover, Delaware

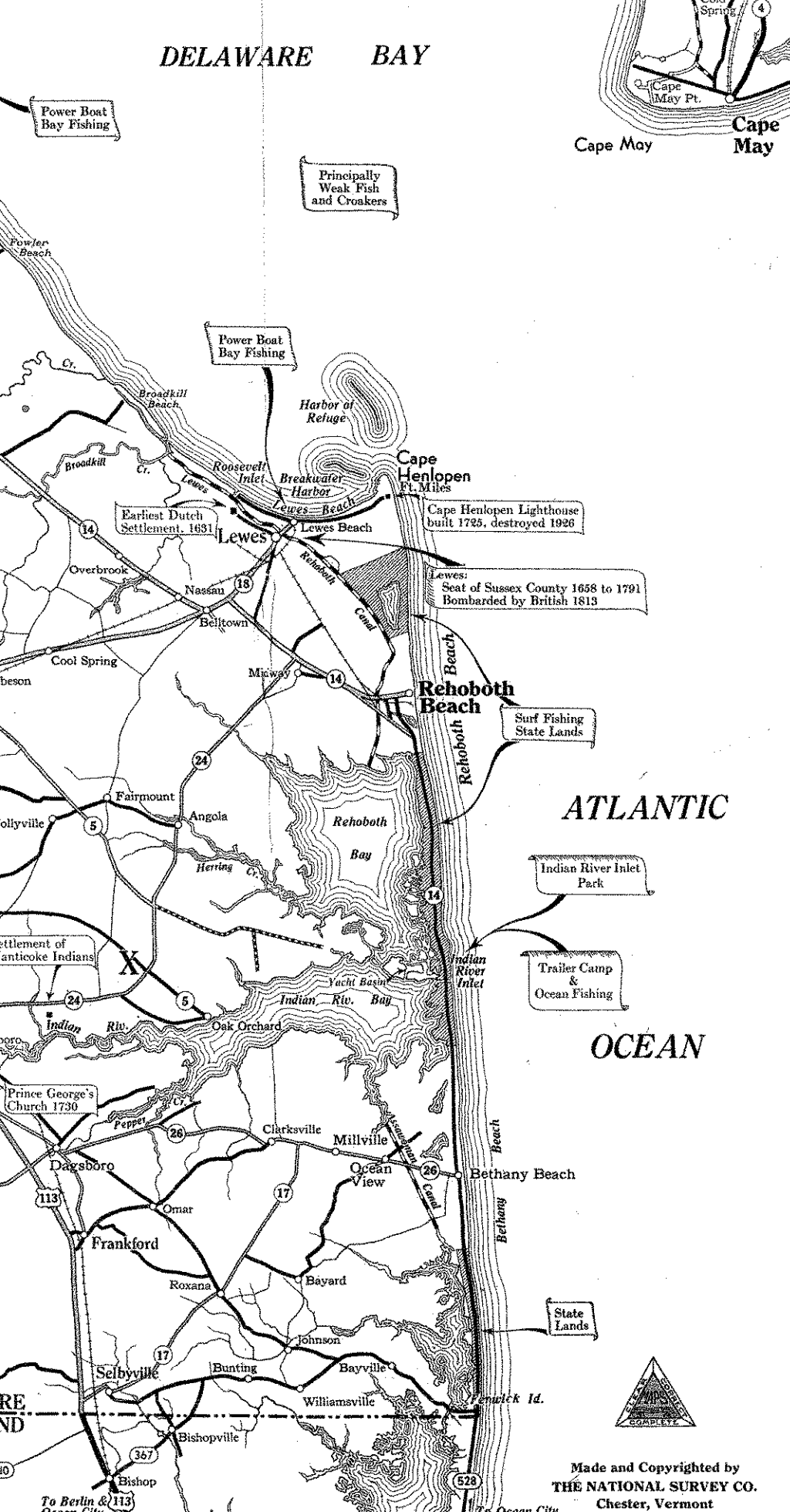
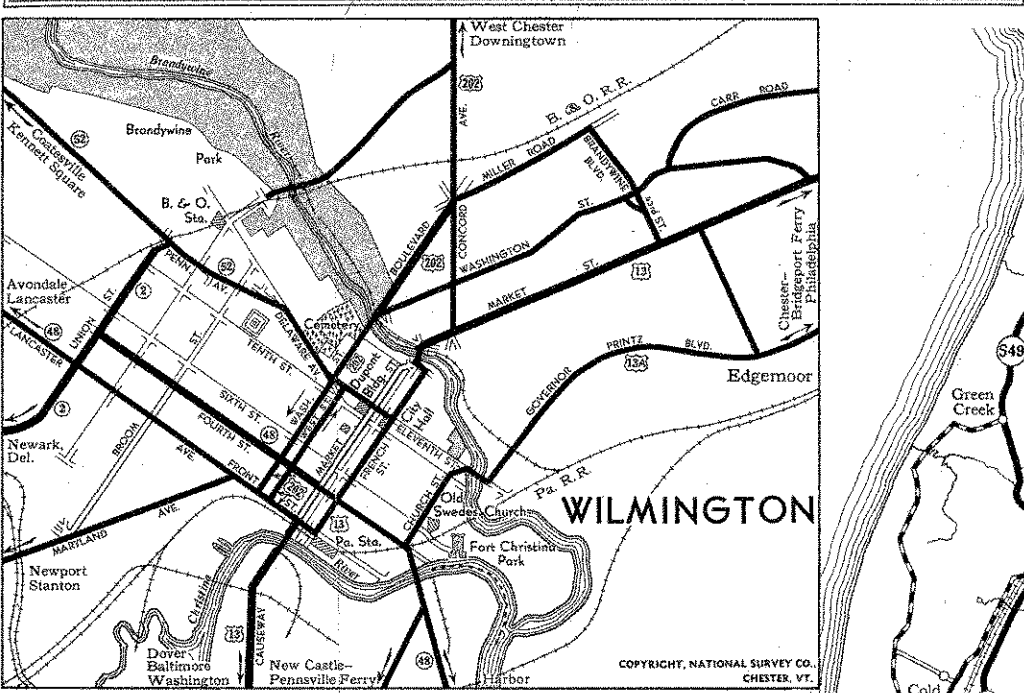
**LEGEND**

Divided Highways . . . . . Type indicates approximate population thus:  
 Main Routes . . . . . over 100,000 . . . . . **Wilmington**  
 Under construction . . . . . 10,000 to 100,000 . . . . . **Chester**  
 Paved Highways . . . . . 2,500 to 10,000 . . . . . **New Castle**  
 Gravel, Slag or Stone . . . . . 1,000 to 2,500 . . . . . **Smyrna**  
 Dirt . . . . . 500 to 1,000 . . . . . **Clayton**  
 U. S. Highway Numbers . . . . . Incorporated, but  
 State Highway Numbers . . . . . Less than 500 . . . . . **Farmington**  
 Wider lines indicate Main Through Routes . . . . . Other Places . . . . . **Dublin Hill**

Scale of Miles  
 0 1 2 3 4 5 6 7 8 9 10

**DELAWARE STATE HIGHWAY MILEAGE CHART**

	Atlantic City via Newark	Baltimore, Md.	Bethany Beach	Bowers Beach	Bridgeville	Damar	Dover	Georgetown	Harrington	Laurel	Lewes	Little Creek	Newark	Oak Orchard	Philadelphia	Rehoboth Beach	Seaford	Selbyville	Sharon	Wilmington		
Atlantic City via Newark	135	168	126	142	163	113	148	130	156	109	152	116	83	73	160	106	156	150	168	79	79	
Baltimore, Md.	135	141	99	116	136	86	122	103	129	82	125	89	51	63	133	95	129	123	141	63	67	
Bethany Beach	168	141	49	38	39	55	30	44	32	62	29	59	95	95	23	127	12	39	13	95	99	
Bowers Beach	126	99	49	26	47	12	29	15	40	37	33	18	53	41	85	37	34	49	54	58	58	
Bridgeville	142	116	38	26	21	29	14	13	14	20	33	34	70	70	31	102	32	7	33	70	74	
Christiana	78	59	92	50	67	88	38	73	55	81	34	77	41	6	5	84	37	80	74	92	3	18
Delaware City	82	64	88	46	63	84	34	69	51	77	30	73	37	15	10	80	43	76	70	88	13	16
Delmar	163	136	39	47	21	50	21	34	7	58	36	55	91	91	32	122	39	14	35	91	95	
Dover	113	86	55	12	29	50	35	17	43	8	39	5	41	41	46	72	43	37	54	41	45	
Felton	125	98	50	12	19	40	11	20	6	33	19	34	16	52	52	42	84	38	26	49	52	56
Frederica	124	98	43	6	21	42	11	24	9	35	19	28	16	52	52	35	84	31	28	43	52	56
Georgetown	148	122	30	29	13	21	35	25	14	43	15	40	76	76	17	108	18	15	20	76	89	
Greenwood	138	112	39	23	5	26	25	19	9	19	33	30	66	66	35	98	33	12	38	66	70	
Hartly	113	86	55	23	40	60	10	45	27	53	14	16	41	41	57	72	53	47	65	41	45	
Harrington	130	103	44	15	13	34	17	25	27	25	29	22	57	57	37	89	33	20	44	58	62	
Laurel	156	129	32	40	14	7	43	14	27	51	29	48	84	84	25	115	32	7	28	84	88	
Lewes	109	82	62	20	37	58	8	43	25	51	47	7	36	36	54	58	50	44	62	37	41	
Little Creek	152	125	29	33	29	36	39	15	29	47	44	80	80	15	111	8	30	30	80	84	84	
Milford	116	89	59	18	34	55	5	40	48	8	44	44	52	52	75	48	42	59	44	48	48	
Milton	132	105	40	13	16	37	19	16	9	30	27	21	24	24	59	59	29	24	23	60	64	
Middleton	144	117	29	25	24	31	31	10	21	24	39	13	36	71	71	16	103	17	25	29	72	76
Millsboro	93	63	77	36	33	73	23	20	40	66	19	62	26	17	21	70	83	66	60	78	20	25
Newark	157	131	16	39	23	24	44	10	34	18	52	19	49	85	85	8	117	18	24	11	85	89
Newcastle	83	51	95	53	70	91	41	76	57	84	36	80	44	11	87	40	83	77	95	6	13	
Newport	77	64	96	55	71	92	42	77	59	85	37	81	45	10	5	89	32	85	79	96	2	5
Odessa	90	65	77	35	32	73	23	58	40	66	19	62	19	18	69	49	66	39	77	18	22	
Oak Orchard	160	133	23	41	31	32	46	17	37	25	54	15	52	87	87	119	15	32	18	88	92	
Philadelphia	106	95	127	85	102	122	72	108	89	115	58	111	75	40	34	119	115	109	124	34	27	
Rehoboth Beach	156	129	12	37	32	39	43	18	33	32	59	8	48	83	83	15	115	34	29	81	88	
Seaford	150	123	39	34	7	14	37	15	20	7	44	30	42	77	77	32	109	34	34	78	82	
Selbyville	168	141	13	49	33	35	54	20	44	28	62	30	59	95	95	18	127	29	24	96	99	
Smyrna	102	75	65	24	41	61	11	46	38	54	7	50	14	28	29	58	61	54	48	66	30	34
Stanton	79	63	95	54	70	91	41	76	58	84	37	80	44	6	7	88	34	84	78	96	7	
St. Georges	83	62	84	42	59	80	20	65	47	73	26	69	33	14	11	76	43	72	66	84	11	15
Townsend	96	68	63	32	49	70	20	55	37	63	16	59	23	22	23	66	55	62	56	74	24	28
Wilmington	79	67	99	38	74	95	45	80	62	88	41	84	48	13	6	92	27	88	82	99	7	





For Free Distribution Only

STATE HIGHWAY DEPARTMENT  
 J. Gordon Smith, Chairman  
 J. H. Taylor McConnell, William P. Richardson  
 Charles R. Stahl, Jr., Samuel N. Culver  
 Canby C. Mammelle, Clayton A. Bunting  
 M. Allan Wilson, Chief Engineer  
 Leroy F. Hawke, Secretary

# THE STATE OF DELAWARE Official ROAD MAP 1950



## STATE HIGHWAY POLICE

### LOCATION AND PHONE NUMBERS

Station No. 1	Penny Hill	Phone Holly Oak	5431
Station No. 2	State Rd.	Phone New Castle	503
Station No. 3	Dover	Phone Dover	5756
Station No. 4	Georgetown	Phone Georgetown	2534
Station No. 5	Bridgeville	Phone Bridgeville	600
State Police Headquarters		Phone New Castle	504

### "NO PASSING ZONES"

Delaware's no passing zones are marked on the pavement with white paint and are strictly enforced. The rule is simple. A white line on your side of the center line means that you must not overtake and pass a vehicle or drive to the left half of the roadway until the white line on your side ends. Frequently, there is a white line on both sides which means that passing is prohibited, from either direction.

The illustrations on this page show the method used by the State Highway Department to mark points where, due to limited sight distance, driving to the left side of the roadway is prohibited.

Picture Number 1 illustrates this marking on a hill on a 2 Lane roadway, while Picture Number 2 illustrates the same marking applied to a curve. The driver may pass when the white line in his lane ends.

In Picture Number 3 is illustrated the application of double white lines on a 4 Lane pavement. It is unlawful to cross the center line from either side in overtaking and passing when the double white line is in place.

### MAKING TURNS

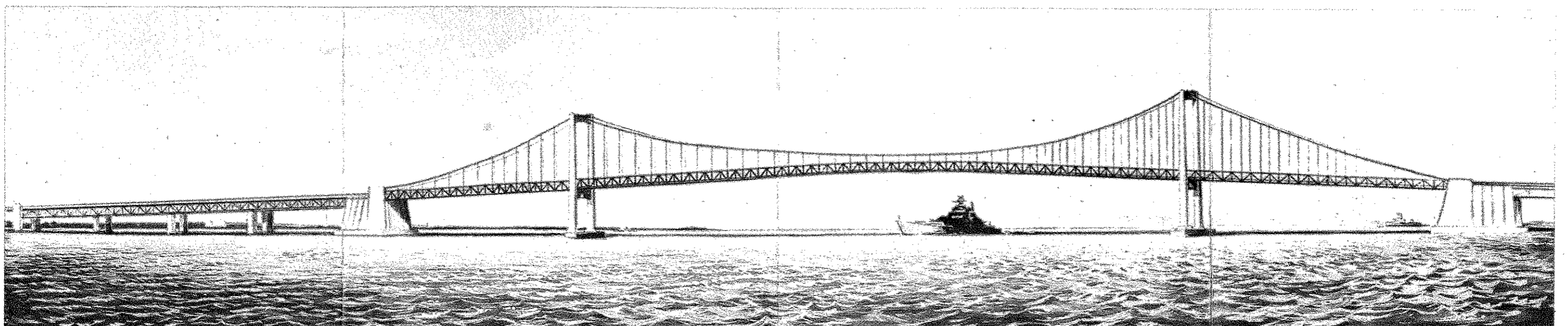
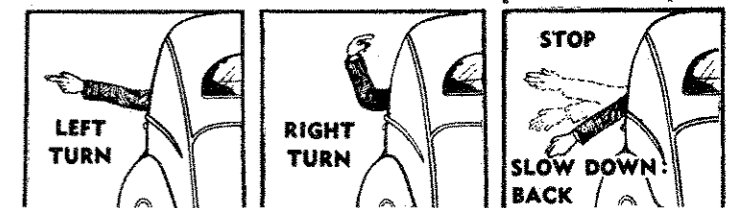
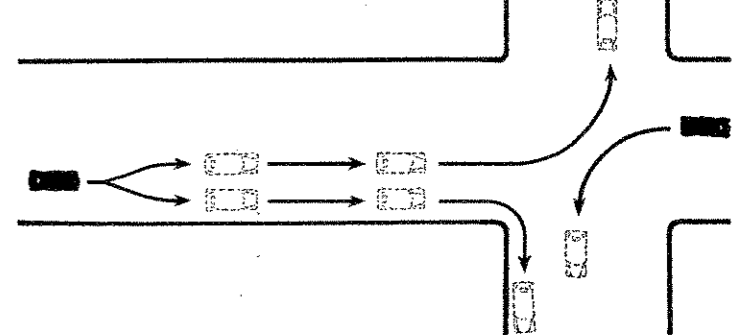
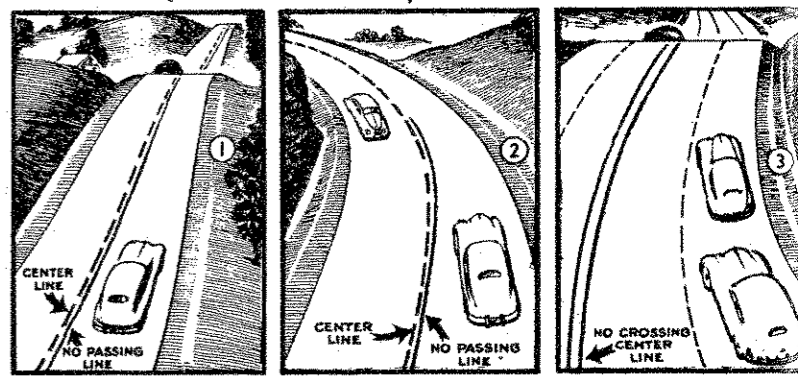
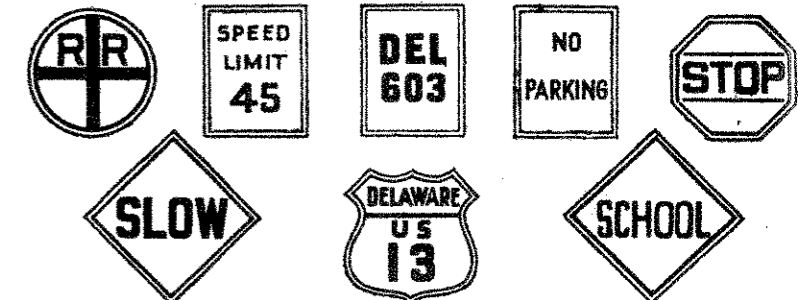
Drive cautiously into proper lane before making a turn. Avoid wide sweeping turns or turns from wrong lane. Be sure to signal your intention to turn.

### HAND SIGNALS

Hand signals for turns must be given continuously during the last 100 feet before turning unless approved signal devices are used instead. Study these illustrations of hand signals and proper turning.

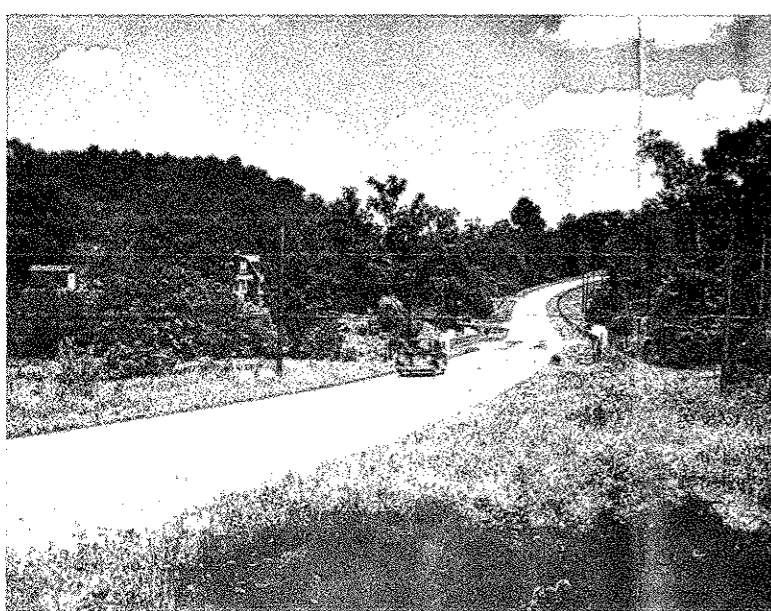
- ### These are the Main Reasons for Automobile Accidents Resulting in Persons Killed or Injured:
1. Exceeding the Speed Limit
  2. On Wrong Side of Road
  3. Reckless Driving
  4. Driving Off Roadway
  5. Failing to Signal
  6. Disturbing Stop Signs
  7. Parking on Highway
  8. Passing on Curve or Hill
- ### RULES OF THE ROAD
1. Keep your car under control at all times.
  2. On Four lane highways, keep to the right and do not cross white line.
  3. Do not stop or park on paved portion of highway.
  4. Come to a full stop before entering Main highways.
  5. Don't pass another car until you can see that the way ahead is clear for a safe distance.
  6. Never pass a vehicle going in the same direction on a hill, curve or at a road intersection.
  7. Do not pass to the right when overtaking another vehicle.
  8. Remember wet roads are slippery—reduce speed accordingly.
  9. Give hand signals when changing speed or direction.
  10. Keep pace with the majority of traffic on heavily traveled highways. If autos are jamming up behind you or you are continually being passed, you are going too slow, speed up.
  11. Be sure your brakes are in good working order.
  12. See that both headlights and tail light are working; head lights adjusted so they illuminate the road but do not blind approaching driver; use dimmers when meeting other cars.
  13. Proceed cautiously at intersecting highways and when meeting pedestrians.
  14. Don't permit passengers or merchandise to crowd the driver's seat.
  15. Give your whole attention to the job of driving.

### ROAD SIGNS AND MARKERS

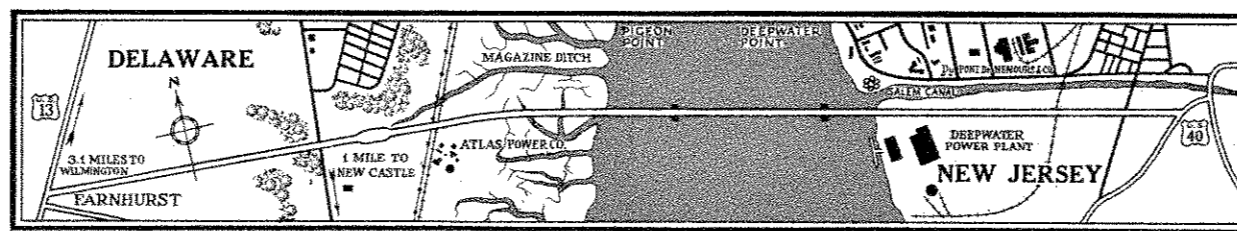


## DELAWARE MEMORIAL BRIDGE

Now Under Construction  
 Estimated Completion Date—1951

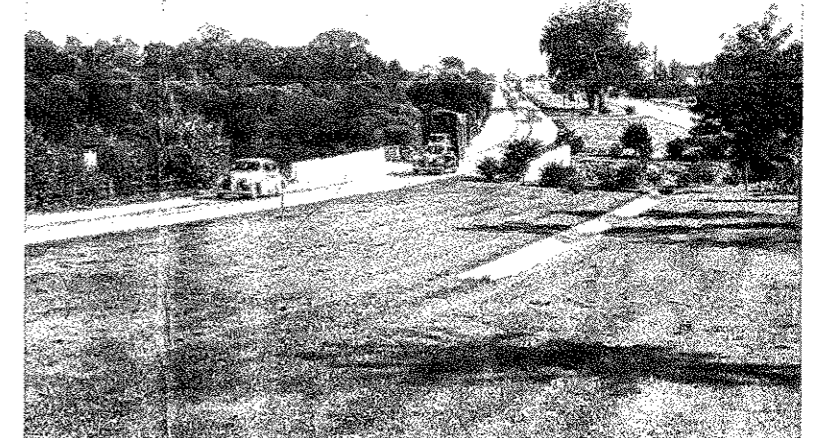


Lancaster Pike, Del. 48, New Castle County

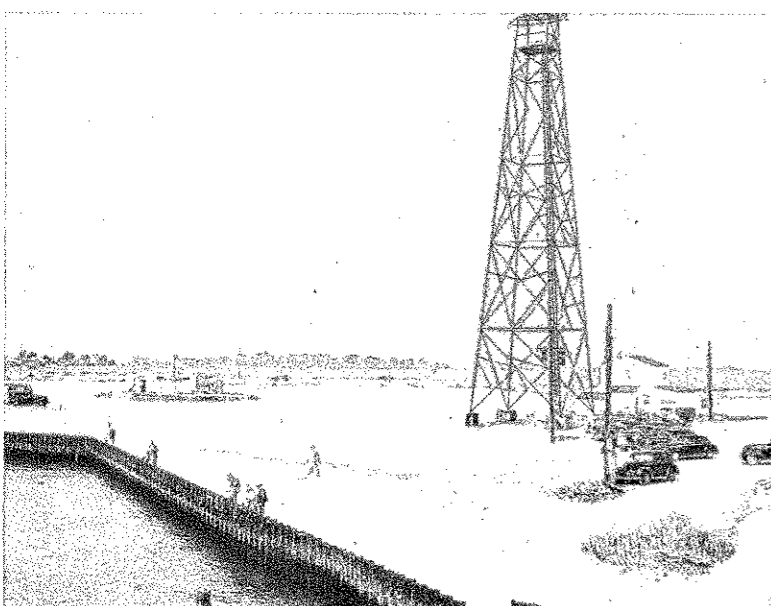


Proposed Delaware Crossing Bridge

## MODERN HIGHWAYS HISTORIC SITES AND GREAT BEAUTY



Divided Highway, Kent County



Indian River Inlet Park



Bathing Scene—Rehoboth



Winter Scene Near Yorklyn