

DELAWARE

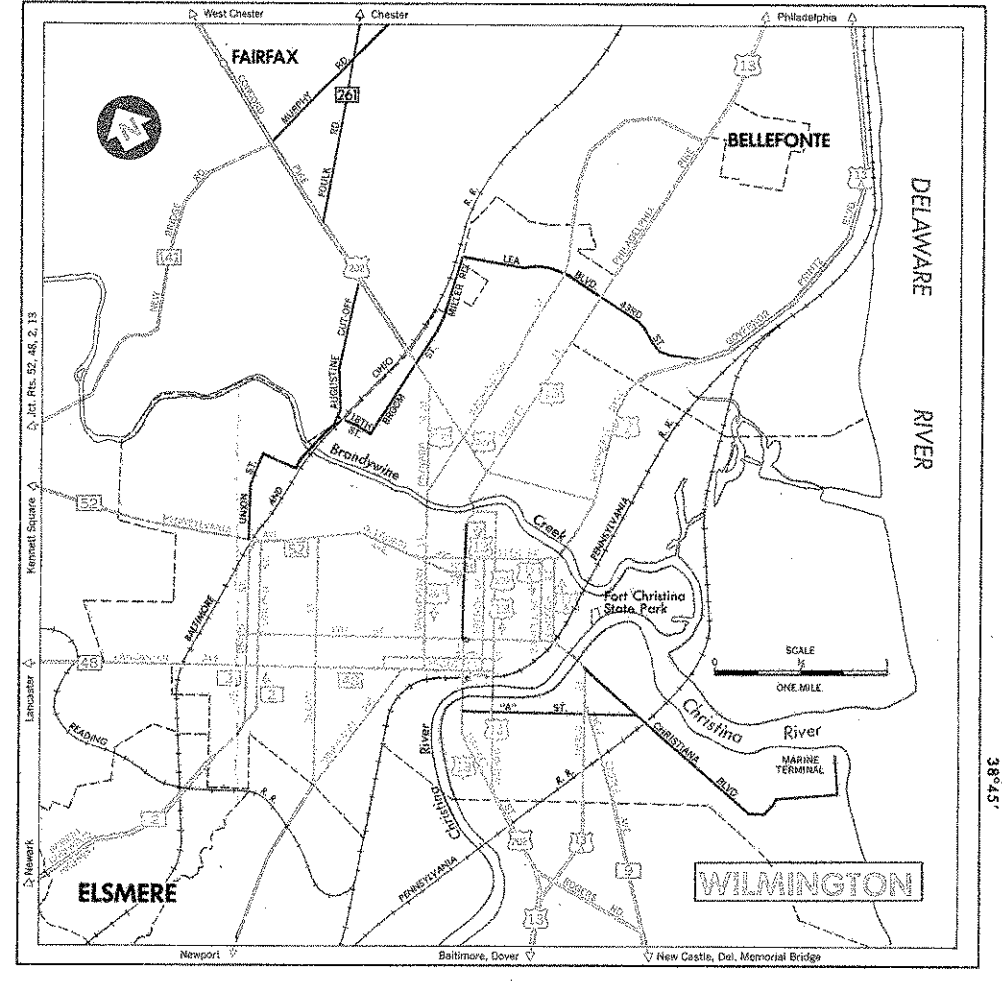
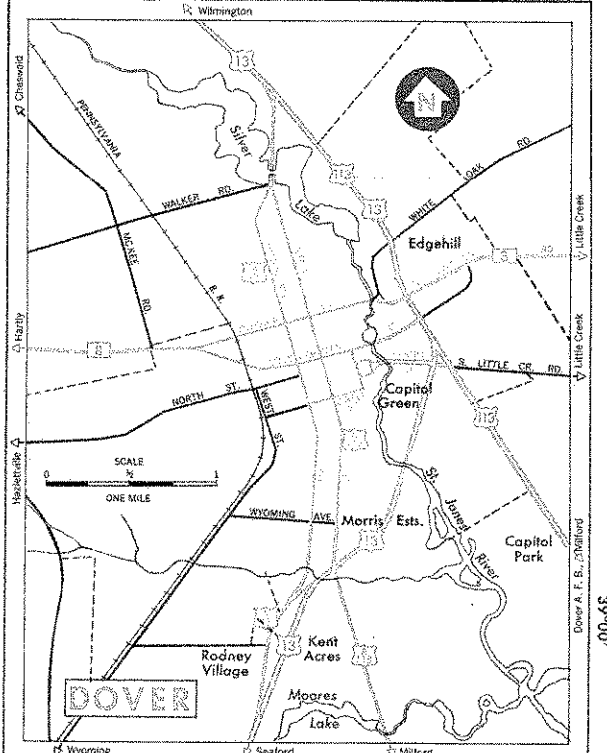
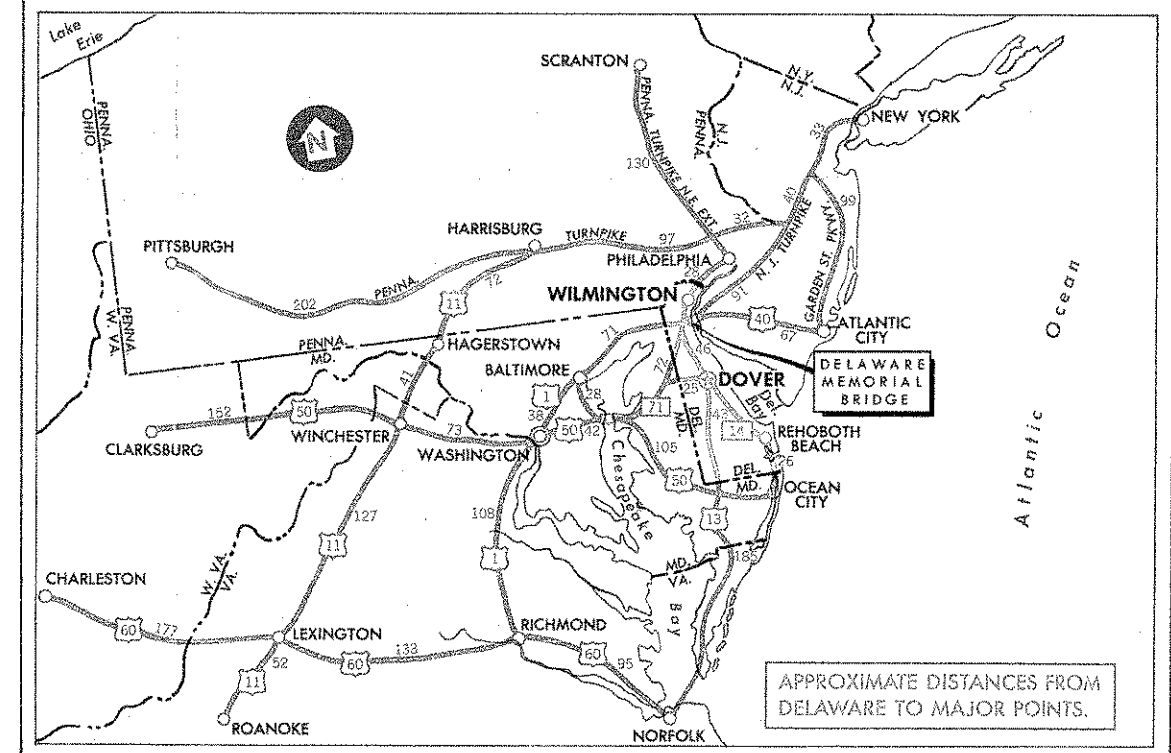
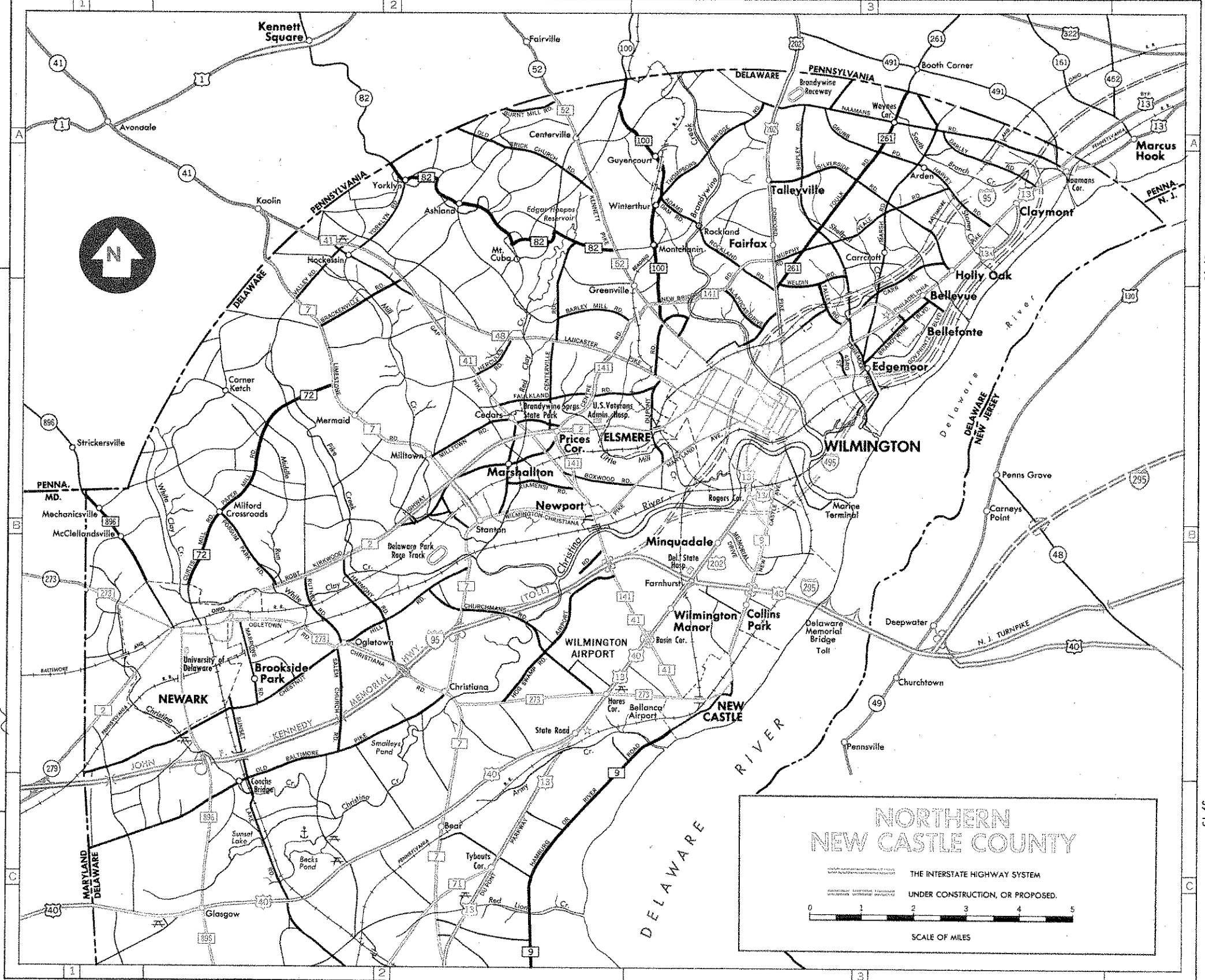
INDEX OF CITIES, TOWNS AND PLACES

STATE CAPITAL—DOVER
 COUNTY SEATS

H-2—MAP LOCATION 1,472—1960 INCORPORATED TOWN CENSUS

<p>A</p> <p>Adamsville H-2 Andrewsville H-2 Angola J-5 Arden A-2 Armstrong J-2 Ashland I-2</p> <p>B</p> <p>Bacon's K-3 Basin Corner K-3 Bayview Beach K-3 Bayville K-5 Bear K-5 Bellefonte 1,536 B-3 Bellevue K-5 Bellwood J-5 Berrytown J-5 Bethany Beach 170 G-2 Bethel J-2 Big Stone Beach 236 G-2 Blackbird J-2 Blackstone J-2 Blaine J-2 Bowers 324 G-4 Bowers Beach J-2 Boyds Corner J-2 Bradford J-2 Bridgeville 1,459 I-2 Broad Creek J-2 Broadkill Beach H-5 Brookside Park H-2 Brownsville H-2</p> <p>C</p> <p>Camden 1,125 F-3 Carmon I-2</p>	<p>D</p> <p>Dagobert 477 J-4 Delaware City 1,268 C-3 Deltair 534 K-2 Dewey Beach 7,250 F-3 Dover 1,020 E-2 Downers Chapel F-2 Douth Hill I-2</p> <p>E</p> <p>Edgemoor B-3 Edwinstown G-2 Elmira 7,319 B-3</p> <p>F</p> <p>Fairmount J-5 Fairfax A-3 Farmington 142 H-3 Farrington 48 H-4 Fallon 422 G-3 Fenwick Island 48 H-4 Forest E-2 Fowler Beach B-3</p> <p>G</p> <p>Georgetown 1,765 L-4 Green Spring C-2 Greenville B-3 Greensboro 788 A-3 Grangeville K-3 Gumbert K-3 Guyanourt A-3</p> <p>H</p> <p>Harbeson L-4 Hardestville J-3 Hara Corner B-2 Harrington 2,495 H-3 Hartly 154 F-2 Hazletville H-2 Hears Mill F-2 Hickman H-2 Hoboken H-2 Hollandsville G-2 Holly Oak A-2 Houston 421 H-4</p> <p>I</p> <p>Indian River Inlet J-5</p> <p>J</p> <p>Johnson K-5 Johnston I-3</p>	<p>K</p> <p>Kentwood 249 F-2 Kirkwood C-2 Kitts Hummock F-4</p> <p>L</p> <p>Laurel 2,709 J-3 Lebanon 281 E-3 Leipsic 3,025 E-3 Lewes 305 F-3 Little Creek 305 F-3 Loves Greencroft K-4</p> <p>M</p> <p>Magnolia 310 G-3 Malton Landing F-4 Marshallton B-2 Marsee F-2 Maseys Landing J-5 Mason F-2 Marston B-2 Marshall 2,191 J-3 Middleford H-3 Midway 5,795 H-3 Milford Greenleafs B-2 Millisport 536 I-4 Millville 1,071 J-3 Millville 231 K-5 Minquodale 1,071 J-3 Mission Light H-4 Missionville B-3 Mt. Pleasant C-2</p> <p>N</p> <p>Nassau 4,400 J-2 New Castle 1,466 B-3 Newport 1,239 B-2</p> <p>O</p> <p>Oak Grove J-2 Oak Orchard F-2 Ocean View 522 C-2 Olin B-2 Olin 522 C-2 Overbrook K-3 Owens I-5</p> <p>P</p> <p>Pearsons Corner F-2 Pepperbox K-3 Peppersburg F-2 Pikesville F-2 Port Clinton B-2 Pottersville B-2</p> <p>Q</p> <p>Quaker Run F-2</p> <p>R</p> <p>Red Lion I-3 Red Lion 1,307 I-3 Reliance J-2 Reliance J-2 Reliance J-2 Rogers Corner A-3 Roxana K-5</p> <p>S</p> <p>Sandown G-2 Seaford 4,400 J-2 Seelyville 1,050 K-3 Seaside 1,050 K-3 Slaughter Beach 107 H-4 Smyrna 9,241 E-2</p> <p>T</p> <p>Talleyville A-3 Taylor Bridge D-3 Thompsonville 434 G-2 Tybouts Corner G-2</p> <p>V</p> <p>Vandyke E-2 Varnum H-3 Vella 150 G-3</p> <p>W</p> <p>Waynes Corner A-3 Whitesville K-3 Whitesville H-3 Willow Grove G-2 Wilmington 95,827 B-3 Wilmington Manor B-3 Winterthur A-2 Woodland A-2 Woodland Beach E-3 Woodstock 185 J-2 Wyoming 1,172 F-3</p> <p>Y</p> <p>Yorklyn A-2</p>
--	--	--

SEE ENLARGEMENT OF NORTHERN NEW CASTLE COUNTY FOR NAMES IN THAT AREA





OFFICIAL HIGHWAY MAP
OF
DELAWARE
 STATE HIGHWAY DEPARTMENT
 DOVER, DELAWARE

LEGEND

State Boundary	Road Types
County Boundary	-----	Unimproved
Primary Highways	Graded and Drained Earth
Divided	Soil Surfaced
Undivided	Low Type Bituminous
Other Roads	Paved
U. S. Numbered Highways	State Police
Del. Numbered Highways	Charter Boat Fishing
Adjoining State Highways	Public Boat Launching Sites
State Capital	Roadside Picnic Areas
County Seat, Other Places	Airports & Landing Fields
Incorporated Towns	Railroads
Forests and Reservations		

SCALE OF MILES



Safety First in the First State

It is the aim of the Delaware State Police to have you enjoy a safe and pleasant visit to Delaware. You will find our Troopers courteous and they will be happy to furnish you assistance at any time. Visitors staying in Delaware must frequently cross high speed highways to gain access to restaurants. Please, for your own safety, comply with all pedestrian regulations and use extreme care in such crossings. After determining that the roadway is clear of oncoming traffic, cross quickly, remaining constantly alert for approaching vehicles. Remember adverse weather and traffic conditions place an additional responsibility on you as a pedestrian to exercise extreme care and caution.

Troop #1 Penny Hill U.S. 13 N. of Wilm.
Troop #2 State Road U.S. 13 S. of Wilm.
Sub-Troop #2A Newark Del. Rt. 2, E. of Newark
Troop #3 Dover U.S. 13 N. of Dover
Troop #4 Georgetown U.S. 113 N. of Georgetown
Troop #4A Dewey Beach Del. Rt. 14, Dewey Beach
Troop #5 Bridgeville U.S. 13 N. of Bridgeville
Headquarters Dover U.S. 13 N. of Dover

PÖrter 4-2192
 EAST 8-7503
 WYman 8-2212
 734-5656
 856-2534
 227-7733
 337-2151
 734-5973

STATE POLICE LOCATIONS

PLEASE OBEY OUR TRAFFIC LAWS — YOUR STAY WITH US WILL BE SAFER, MORE PLEASURABLE

1. Obey posted speed laws. ENFORCEMENT BY UNMARKED PATROL CARS — RADAR — and AIRCRAFT

SPEED LIMIT (Passenger Cars)
 60 MPH (Daytime) on dual or four or more lane undivided roads.
 55 MPH (Night time)
 50 MPH on two lane roads
 25 MPH in business and residential districts
 20 MPH in school zones

*TRUCKS over 8,000 lbs. maximum speed limit is 45 MPH.
 The above maximum limits apply where no special hazards exist with respect to pedestrian or other traffic, or by reason of weather or road conditions.

2. Keep to the right on four lane highways except to pass. Never stop on the main traveled portion of the highway, except when necessary to avoid conflict with other traffic or in compliance with traffic control devices.

3. Remember intersecting highways are quite frequently high accident locations, therefore, they should be approached with extreme care.

4. Never drive so slowly as to be a hazard on the road or a hindrance to other traffic.

5. Give all your attention to the job of driving.

IF YOU ARE NOT A VISITOR but have established residence in this State you are required by law, to obtain Delaware license and auto registration plates within 90 days by applying to the Motor Vehicle Department's Offices in Dover, Wilmington or Georgetown.

You are a resident when you:

1. Accept employment and establish residence in this State.
2. Accept employment and place your children in Delaware schools.

3. Accept employment in Delaware and maintain no permanent residence in another state but periodically visit your native state.

IN THE EVENT OF A TRAFFIC ACCIDENT:

1. Stop and render reasonable assistance to the injured.
2. Identify yourself by displaying your driver's license and registration cards.
3. Report the accident immediately to State or local police, if property damage amounts to \$25.00 or more, or if there is anyone injured.
4. In addition, if injury or property damage of \$100.00 or more results, a separate report must be submitted to the Financial Responsibility Division, Motor Vehicle Department, Dover, Delaware within five days of the accident.

Mileage Chart

	BALTIMORE	CUNESPEAKE BAY BRIDGE	DELAWARE MEMORIAL BRIDGE	DOVER	GEORGETOWN	HARRINGTON	LAUREL	MILFORD	NEWARK	NEW YORK, N. Y.	NORFOLK, VA.	ODESSA	PHILADELPHIA, PA.	REHOBOTH BEACH	SEAFORD	SMYRNA	WASHINGTON, D. C.	WILMINGTON
WILMINGTON	75	85	7	50	85	67	94	69	17	127	235	27	24	93	87	39	113	4
REHOBOTH BEACH	123	90	98	55	24	43	31	36	94	218	142	78	129	12	34	66	137	101
SEAFORD	78	45	73	30	14	13	14	17	69	193	155	53	104	32	7	41	92	76
SMYRNA	87	54	47	4	33	13	40	17	43	167	181	27	78	41	33	15	101	50
NEWARK	113	80	91	48	13	36	20	29	87	211	137	71	122	22	23	59	123	94
DOVER	69	68	15	35	70	52	79	54	15	135	220	12	46	78	72	24	115	18
GEORGETOWN	100	67	94	51	21	34	7	38	90	214	134	74	125	39	14	62	114	97
HARRINGTON	83	50	43	●	35	17	44	19	39	163	185	23	74	43	37	11	97	46
LAUREL	82	49	54	11	29	6	33	13	60	174	174	34	85	37	26	22	96	57
MILFORD	129	96	104	61	29	49	36	42	100	224	136	84	135	18	43	72	143	107
NEWARK	115	82	93	50	15	38	22	31	89	213	135	73	124	23	29	61	129	96
DOVER	91	58	55	12	23	12	37	7	51	175	173	35	86	31	31	23	105	58
GEORGETOWN	92	59	78	35	●	23	14	16	74	198	150	58	109	18	15	46	106	81
HARRINGTON	76	43	68	25	18	8	19	12	64	188	160	48	99	31	12	36	90	71
LAUREL	77	44	60	17	23	●	27	7	56	180	168	40	91	31	20	28	91	63
MILFORD	73	40	44	10	45	27	54	29	40	164	195	24	75	53	47	12	87	47
NEWARK	93	60	87	44	14	27	●	31	83	207	141	67	118	32	7	55	107	90
DOVER	107	74	82	39	15	27	29	20	78	202	157	62	113	7	29	50	121	89
GEORGETOWN	90	57	50	7	28	13	40	12	46	170	169	30	81	36	33	18	104	53
HARRINGTON	86	53	26	23	58	40	67	42	17	146	208	3	57	66	60	12	100	29
LAUREL	85	52	62	19	16	7	31	●	58	182	166	42	93	24	24	30	99	65
MILFORD	108	75	87	44	9	32	24	25	83	207	140	67	118	18	19	55	122	90
NEWARK	91	58	75	32	10	20	24	13	71	195	161	55	106	17	25	43	105	78
DOVER	67	74	2	41	76	58	85	60	11	122	226	18	33	84	78	30	104	5
GEORGETOWN	61	71	15	39	74	56	83	58	●	135	224	20	41	82	76	28	98	13
HARRINGTON	68	76	5	43	78	60	87	62	10	125	228	20	33	86	87	29	105	2
LAUREL	89	56	20	23	58	40	67	42	20	140	208	●	51	66	60	12	103	23
MILFORD	111	78	86	43	18	31	32	24	82	206	149	66	117	●	33	54	125	89
NEWARK	86	53	80	37	15	20	7	24	76	200	148	60	111	33	●	48	100	83
DOVER	118	85	97	54	19	42	26	35	93	217	130	77	128	28	29	65	132	100
GEORGETOWN	85	52	32	11	46	28	55	30	28	152	196	12	63	54	48	●	99	35
HARRINGTON	71	81	3	46	81	63	90	65	13	123	231	23	28	89	83	35	109	●

NEW CASTLE COUNTY:

FORT CHRISTINA MONUMENT. In small park at foot of Seventh Street, Wilmington. Monument by Carl Milles, given by the people of Sweden in 1938, marks site of the first landing place of the Swedes who settled here in 1638.

OLD SWEDS CHURCH. East Seventh Street, Wilmington. Built in 1698 under the Rev. Eric Bjork, when the Swedish congregation moved from earlier log church at Cranehook. The Church of Sweden withdrew in 1791 and gave title to the Protestant Episcopal Church. Open 12:00 to 4 p.m. daily, except Mondays. Guide service. Adjacent is *The Hendrickson House*, Swedish-Colonial farm house, erected 1690 in Ridley Township, Pa.

OLD TOWN HALL. Market Street nr. Sixth, Wilmington. Built in 1798 by Peter Bauduy on land given by John Dickinson. It was the seat of civil government and the scene of many public events until purchased by the Historical Society of Delaware in 1917. Interesting collection of memorabilia, Revolutionary days to present. Open 10:00 a.m. - 5:00 p.m. Monday through Friday.

DELAWARE ART CENTER. Kentmere Parkway, Wilmington. Houses Howard Pyle and other famous collections. Admission free. Open daily - 10 a.m. to 5 p.m.; Sundays - 2 p.m. to 6 p.m.

HAGLEY MUSEUM. Located in the old Du Pont Powder Yards on Brandywine Creek, three miles north of Wilmington (via Rte. 141). Exhibits feature water-powered industry including flour, paper and gun powder. Hours: Tuesdays thru Saturdays, 9:30 a.m.-4:30 p.m.; Sundays 1:00-5:00 p.m. Closed Mondays.

HENRY FRANCIS du PONT WINTERTHUR MUSEUM. Five miles west of Wilmington, on Route 52. More than 100 period rooms covering American domestic scene 1640-1840. Appointment needed to visit Main Museum. Ten rooms in South Wing open without appointment, Tues.-Sat. 9:30 a.m.-4 p.m.

THE OLD COURT HOUSE. New Castle, Delaware's colonial capital and the county seat for many years. It and the buildings on *The Green* are now under State protection. Visitors should also see *Amstel House* and the *Old Dutch House*, which are now small museums, and the many fine old churches of New Castle.

FORT DELAWARE. On Pea Patch Island in Delaware River off Delaware City. This state park has ruins of old fort, focal point for Delaware's Civil War Centennial observance. Museum with valuable collection. Boats from Delaware City Saturdays, Sundays and holidays, Memorial Day to Oct. 15.

OLD COLLEGE, NEWARK. Built 1833, was the first building of New Ark College, later Delaware College and now the University of Delaware.

WELSH TRACT CHURCH. Newark. Baptist Church built in 1746. Hit by cannon fire during Battle of Cooch's Bridge (1777).

COOCH'S BRIDGE. Rte. 7 south of Newark. In 1777 was the scene of the only battle of the Revolutionary War fought in Delaware. The Stars and Stripes is said to have been unfurled in a land battle for the first time at this bridge.

OLD ST. ANNE'S CHURCH. near Middletown. Erected in 1788 by a congregation founded about 1704, as a Church of England mission.

THE CORBIT-SHARP HOUSE. Odessa. Beautiful example of Georgian Colonial architecture. Built 1772. Completely restored. Now a museum. Open Tuesdays, Thursdays, and Saturdays from 10 a.m. to 5 p.m.; Sundays, 2-5 p.m.

DAVID WILSON MANSION. Odessa. Restoration of original 1740 house. Excellent example of Georgian Colonial architecture. Open Tuesdays, Thursdays, Saturdays, 10 a.m.-5 p.m.; Sundays, 2-5 p.m. — April through November.

KENT COUNTY:

"THE LINDENS." Smyrna. Typical example of a miller's home of the late colonial era (erected before 1765). Nearby is an early plank house. Both are owned by the Public Archives Commission and exhibited by Duck Creek Historical Society. Telephone 653-7021 for appointment.

THE OLD STATE HOUSE. The Green, Dover. Rebuilt 1787-1792 from earlier Kent County Court-house. A center of State government since 1777, and the second oldest courthouse still in administrative use. Here Delaware became the first state in 1787. Open 9:00 a.m. to 4:30 p.m., Mondays through Fridays.

LEGISLATIVE HALL. Completed in 1933, this is keystone of the capital buildings group. It houses the General Assembly, the offices of the Governor, Lieutenant-Governor and Secretary of State. Portraits of military heroes. Open 8:30 a.m. to 4:30 p.m. Mondays through Fridays.

HALL OF RECORDS. Here public archives of state are housed, including original royal grant from Charles II to James, Duke of York, (1682). Open Monday thru Friday - 8:30 a.m. to 4:30 p.m.

CHRIST CHURCH. Dover. Built in 1704 by a congregation organized in 1704. Caspar Rodney, a signer of the Declaration of Independence, is among the many prominent parishioners buried in its churchyard.

SUSSEX COUNTY:

ZWAANENDAEL MUSEUM. Lewes. Erected in 1931 by the State of Delaware to mark the tercentenary of the European settlement in Delaware, made by the Dutch in 1631. Reproduction of Town Hall, Hoom, Netherlands. Colonial and Revolutionary War exhibits from Lewes and Sussex County. Open daily except Monday, 10 a.m. to 5:00 p.m.; Sundays and holidays, 1:00 to 5:00 p.m.

1812 MEMORIAL PARK. Lewes. This small park facing the Lewes-Rehoboth Canal commemorates the bombardment and defense of Lewes during the War of 1812. Old cannon dating back to Revolutionary War period are on display here.

DEVRIES MONUMENT. Lewes. Near north end of Pilot Town Road, is monument (erected 1909), marking site of ill-fated Dutch Colony of 1631.

ANCIENT HOMES. Lewes abounds in carefully preserved 18th century dwellings. Several of these — notably the *Burton-Ingram House*, the *Maul House* and the *"Cannonball House"* — may be seen by appointment (contact Lewes Historical Society). A *"Country Store"*, operated for over 100 years, is open during summer months.

OLD CHURCHES AND CHURCHYARDS. Included among the churches of Lewes are St. Peter's Episcopal, erected in 1858 by a congregation established before 1700; *Lewes Presbyterian*, erected 1832 on the site of earlier churches dating back to 1707; and *Bethel Methodist*, successor to earlier Methodist churches dating back to 18th century.

History

open without appointment, Tues.-Sat. 9:30 a.m.-4 p.m.

THE OLD COURT HOUSE. New Castle, Delaware's colonial capital and the county seat for many years. It and the buildings on *The Green* are now under State protection. Visitors should also see *Amstel House* and the *Old Dutch House*, which are now small museums, and the many fine old churches of New Castle.

FORT DELAWARE. On Pea Patch Island in Delaware River off Delaware City. This state park has ruins of old fort, focal point for Delaware's Civil War Centennial observance. Museum with valuable collection. Boats from Delaware City Saturdays, Sundays and holidays, Memorial Day to Oct. 15.

OLD COLLEGE, NEWARK. Built 1833, was the first building of New Ark College, later Delaware College and now the University of Delaware.

WELSH TRACT CHURCH. Newark. Baptist Church built in 1746. Hit by cannon fire during Battle of Cooch's Bridge (1777).

COOCH'S BRIDGE. Rte. 7 south of Newark. In 1777 was the scene of the only battle of the Revolutionary War fought in Delaware. The Stars and Stripes is said to have been unfurled in a land battle for the first time at this bridge.

OLD ST. ANNE'S CHURCH. near Middletown. Erected in 1788 by a congregation founded about 1704, as a Church of England mission.

THE CORBIT-SHARP HOUSE. Odessa. Beautiful example of Georgian Colonial architecture. Built 1772. Completely restored. Now a museum. Open Tuesdays, Thursdays, and Saturdays from 10 a.m. to 5 p.m.; Sundays, 2-5 p.m.

DAVID WILSON MANSION. Odessa. Restoration of original 1740 house. Excellent example of Georgian Colonial architecture. Open Tuesdays, Thursdays, Saturdays, 10 a.m.-5 p.m.; Sundays, 2-5 p.m. — April through November.

DELAWARE STATE MUSEUM. Governors Avenue, Dover. Offers exhibits on many phases of Delaware life. A Swedish type log house is an outstanding exhibit. Open Tuesday-Saturdays, 11:00 a.m.-5:00 p.m.; Sundays 2:00-5:00 p.m. Closed Mondays.

THE JOHN DICKINSON MANSION. 5 miles S. E. of Dover. The home of John Dickinson (1732-1808), statesman and writer, during much of his life. Built in 1740 by Samuel Dickinson, his father. In 1932 the Colonial Dames presented it to the State for restoration. Open Tuesdays-Saturdays, 10:00 a.m. to 5:00 p.m.; Sundays, 1:00-5:00 p.m. Closed Mondays and holidays.

BARBATT'S CHAPEL. near Frederica. Erected in 1780. Known as "The Cradle of Methodism in America." Here the decision to organize the Methodist Episcopal Church was reached in 1784 and Communion first regularly administered.

THE PARSON THORNE MANSION. N.W. Front Street, Milford. One of Delaware's "newest" historical shrines and tourist attractions. Believed to be oldest dwelling in Milford area (acquired during Revolutionary War period by the Rev. Sydenham Thorne, co-founder with Joseph Oliver of Milford). Old English Colonial type structure; interior features original paneling, stairways, etc. Contact Milford Historical Society for tour arrangements.

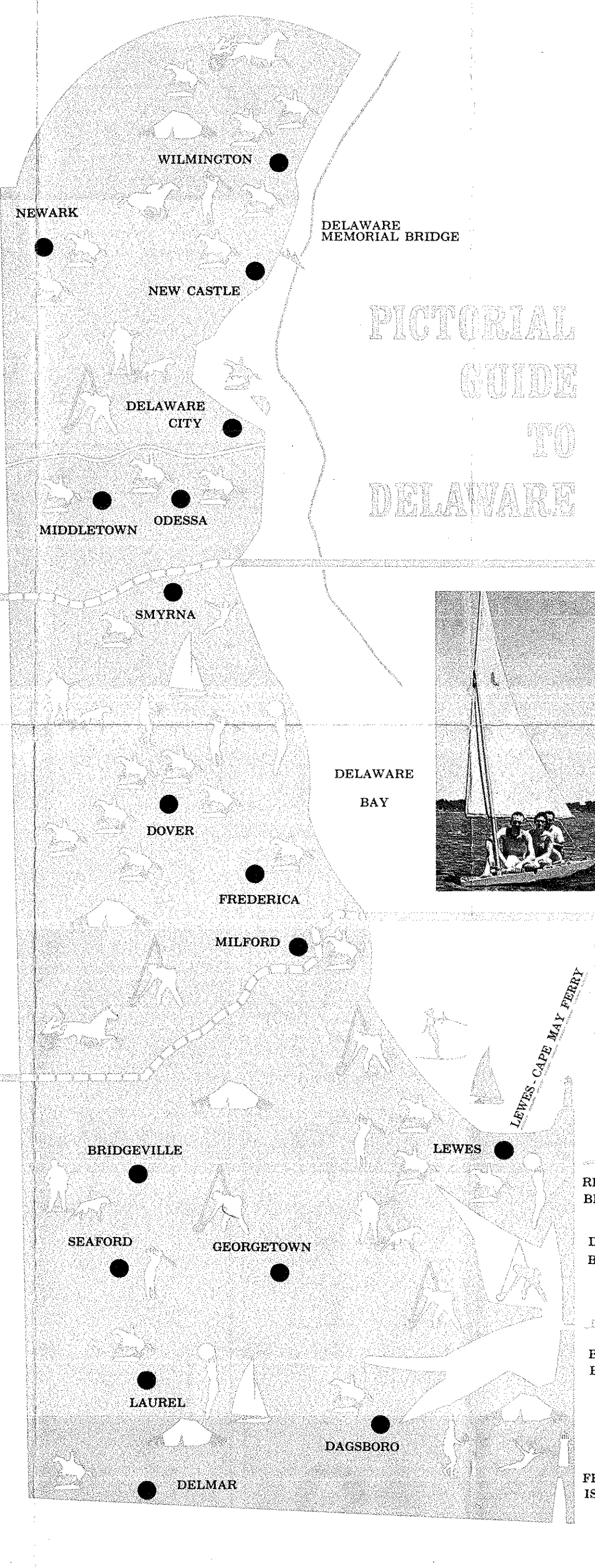
FENWICK LIGHT. At Fenwick Island, adjacent to Delaware-Maryland boundary line, is lighthouse whose lights have guided Atlantic Coast shipping for over 100 years. Original boundary marker, bearing coats-of-arms of Penn and Calvert families, at base of lighthouse.

PRINCE GEORGE'S CHAPEL at Dagsboro. Completed in 1757, retains much of its original appearance.

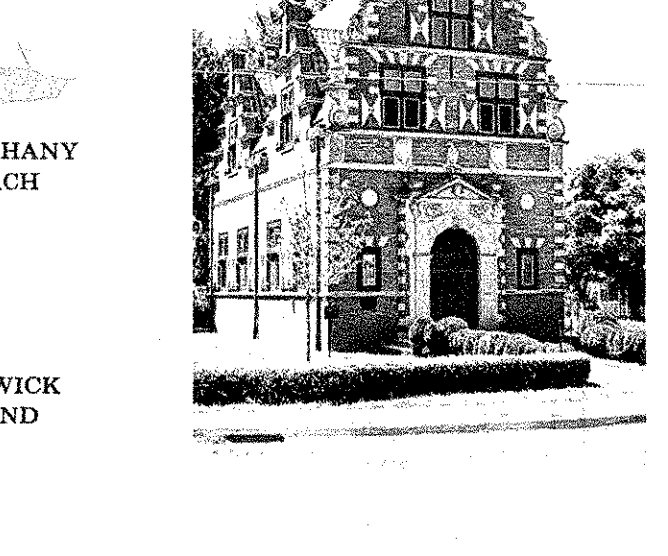
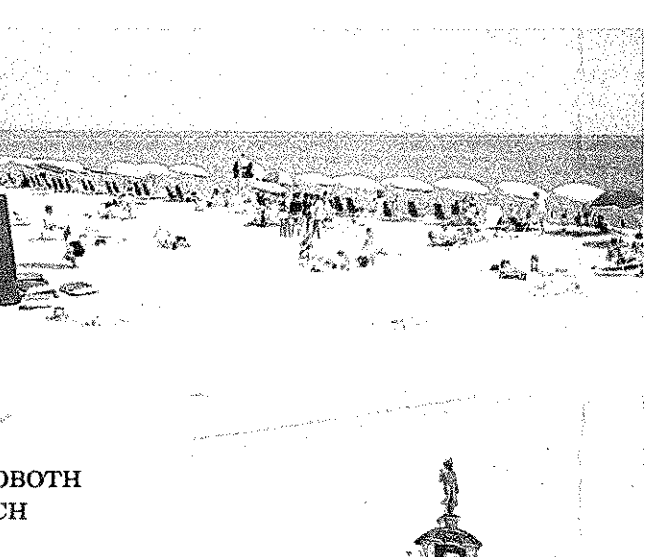
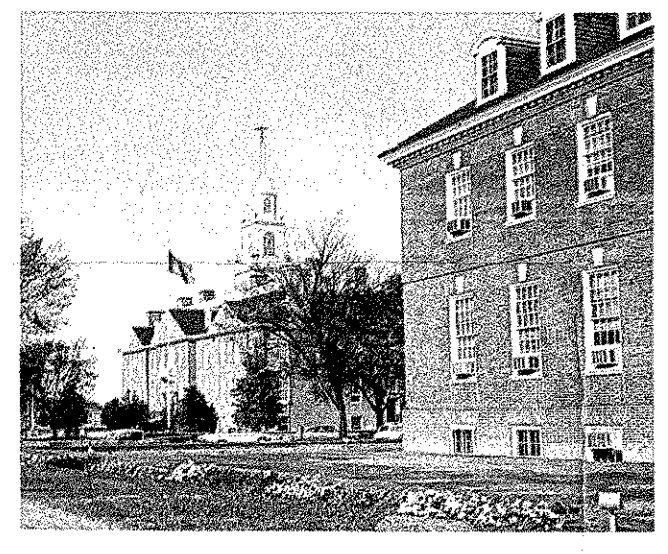
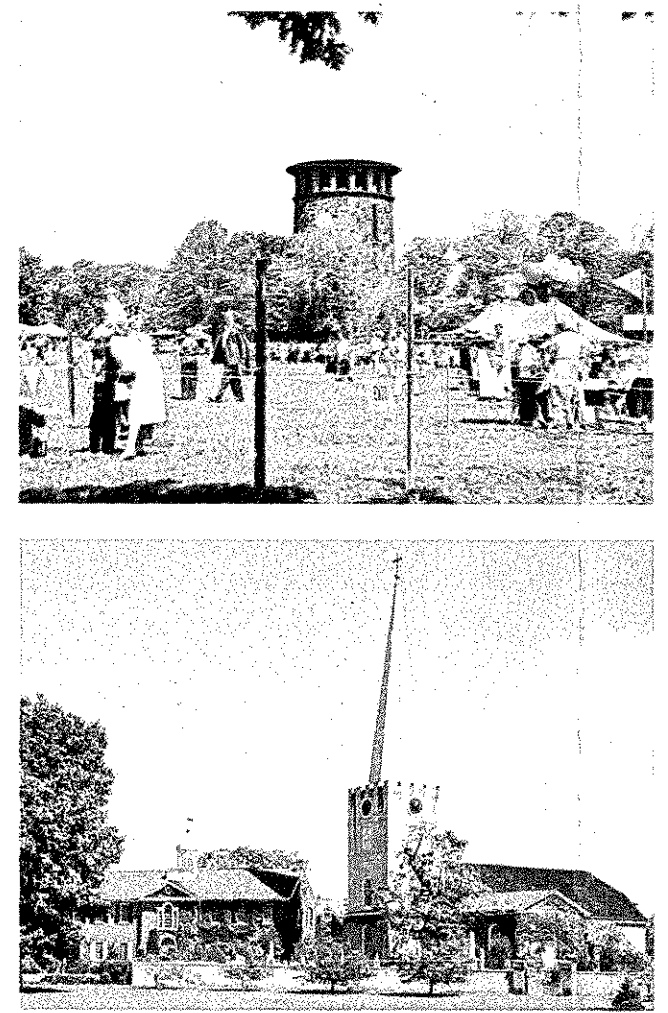
CHRIST CHURCH. Broad Creek Hundred, near Laurel. Erected in 1771, this unpointed frame dwelling remains as a fine example of early rural church architecture. Annual services held here each Whitsunday.

MASON-DIXON MONUMENT. west of Delmar at S. W. Corner of Delaware. Double crownstone erected 1768 by Charles Mason and Jeremiah Dixon to mark the middle point of trans-peninsular line (1751) and southern end of north-south portion of Mason-Dixon boundary. Smaller stone (1760) adjacent. Both bear the coats-of-arms of Penn and Calvert families, whose boundary disputes they resolved.

Note: Many other historical sites and dwellings, too numerous to be included in this list, may also be seen in Delaware. Some of these are open for public viewing during annual "historic days" at New Castle, Dover, City of Wilmington and Lewes. For information regarding these and other Delaware attractions, contact Development Department, 45 The Green, Dover, Delaware.



Recreation



***BRANDYWINE SPRINGS STATE PARK** — 4 miles west of Wilmington on Del. Route 41. Offers 200 tables and 245 fireplaces for picnicking. Pavilions for group picnicking (by reservation). Also offers a day camp site and two athletic fields. No pets permitted. Park closes at 10 p.m.

***FORT DELAWARE STATE PARK** — Located on Pea Patch Island, in Delaware River off Delaware City. Historic site; includes a small museum housing Civil War memorabilia. Drinking water, sanitary facilities and picnic tables available. Camping is not permitted. Boat transportation from Delaware City to island and return available Saturdays, Sundays and holidays (12:00 to 7 p.m.) from May 25 to October 15.

WILMINGTON PARKS: Many fine parks and recreational areas are provided in or near the City of Wilmington. Athletic competition and picnicking permitted at Baynard Stadium, 18th and Broom Streets. Swimming pools, tennis courts, and playgrounds at several locations. (Additional information available from Board of Park Commissioners, Public Building, 10th and King Streets, Wilmington.)

FRESH WATER FISHING: Good fresh water fishing is available at several ponds in lower part of county. Fresh water trout are stocked in some northern New Castle County streams. (Contact Game & Fish Commission, Dover, for additional information.)

PETERSBURG RECREATION AND CONSERVATION AREA. west of Woodside, offers camping sites and lodge for supervised youth and conservation groups. (Contact Game and Fish Commission, Dover, for information.)

SWIMMING AND GOATING. Municipal-operated areas at Lake Como, Smyrna, and Silver Lake, Dover, offer fresh water swimming and boating.

FISHING: Public fishing and small boat launching facilities available at several Kent County ponds and lakes. Party boat accommodations, for salt water fishing, available at Bowers, Missipillon Light, and other bayside locations. Boats may be rented at Woodland Beach, Kitts Hummock and Bowers.

WILDLIFE VIEWING: The Bombay Hook Federal Waterfowl Refuge near Smyrna offers, in the Fall and Spring, spectacular wildlife scenes.

SUSSEX COUNTY:

BEACHES: The resorts of southeastern Sussex County annually attract thousands of vacationists. The largest of these, Rehoboth Beach, offers ocean bathing, surf fishing, golf, tennis and other sports; also many special events. Lewes (on Delaware Bay) provides calm, safe bathing facilities particularly attractive to families with small children. Popular with those seeking relaxation in a quiet atmosphere are Bethany Beach, Fenwick Island and Dewey Beach. Nearby bays offer good clamming, crabbing and boating. Modern housing facility and good restaurants throughout the area (contact Delaware State Development Dept., Dover, for additional information).

INDIAN RIVER INLET PARK: South of Dewey Beach between the Atlantic Ocean and Rehoboth and Indian River Bays are state-owned lands providing varied outdoor recreation including bathing in ocean or in shallow inland waters. Picnic tables and sanitary facilities are provided; restaurants and motels are nearby.

***TRAP POINT STATE PARK:** Off Route 24, five miles southeast of Laurel (and U.S. 13), is wooded park surrounding large pond and offering pavilions for group picnicking; fireplaces for outdoor cooking; sanitary facilities; sites for tenting and camping trailers; and good bathing, fishing and boating.

STATE FORESTS: Picnic facilities, pavilions and fresh water are available at sites in Ellendale and Redden State Forest Areas along U.S. 113 in Sussex County.

FISHING: Fish — in many varieties and sizes — are taken from the many ponds and inland bays, and from the surf line and depths of the Atlantic. Party boats depart daily from Lewes and Indian River Inlet. Bait, tackle, etc., available at most fishing sites.

*For additional information contact: State Park Commission, 3300 Faulkland Road, Wilmington 8, Delaware.

HISTORY OF DELAWARE

"Delaware is like a diamond, diminutive, but having within it inherent value," a Delaware poet, John Lofland, wrote more than one hundred years ago. This was perhaps the origin of Delaware's "nickname," The Diamond State, although it may have come from Thomas Jefferson's earlier reference to Delaware as "a jewel among the States".

One of the original thirteen colonies and "The First State" by virtue of being the first to adopt the Constitution (December 7, 1787), Delaware, despite its small size, has made notable contributions to the