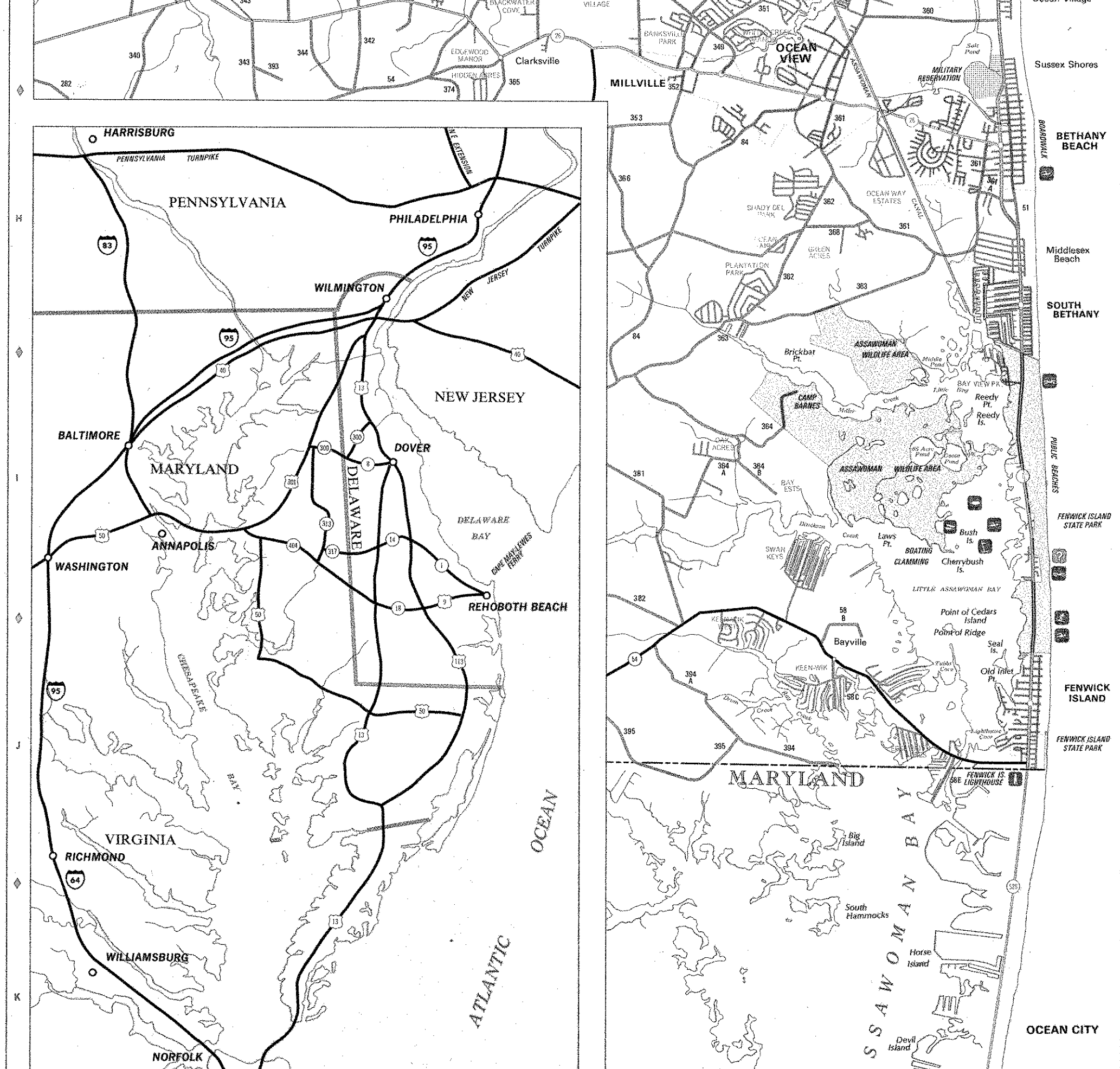
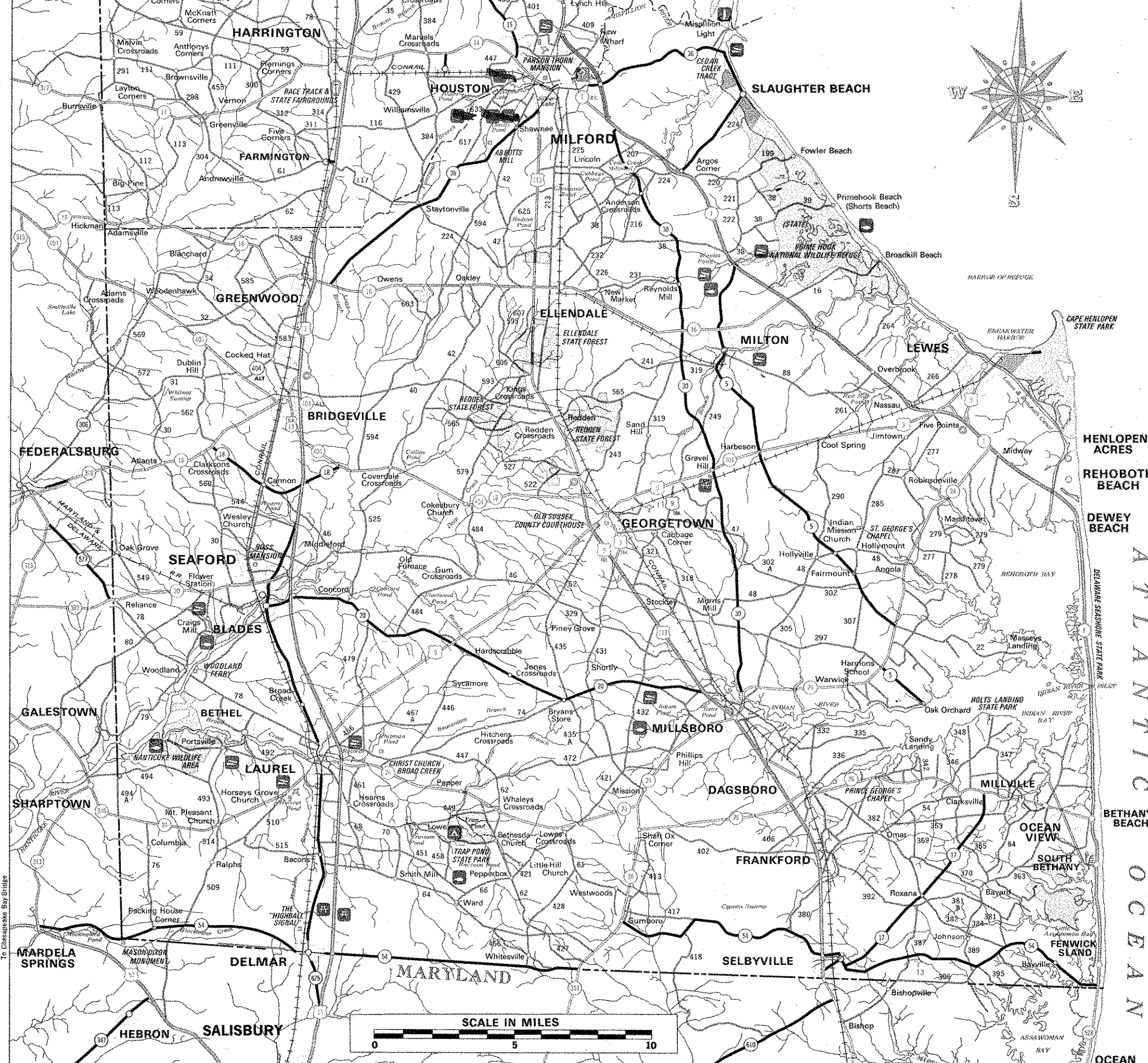
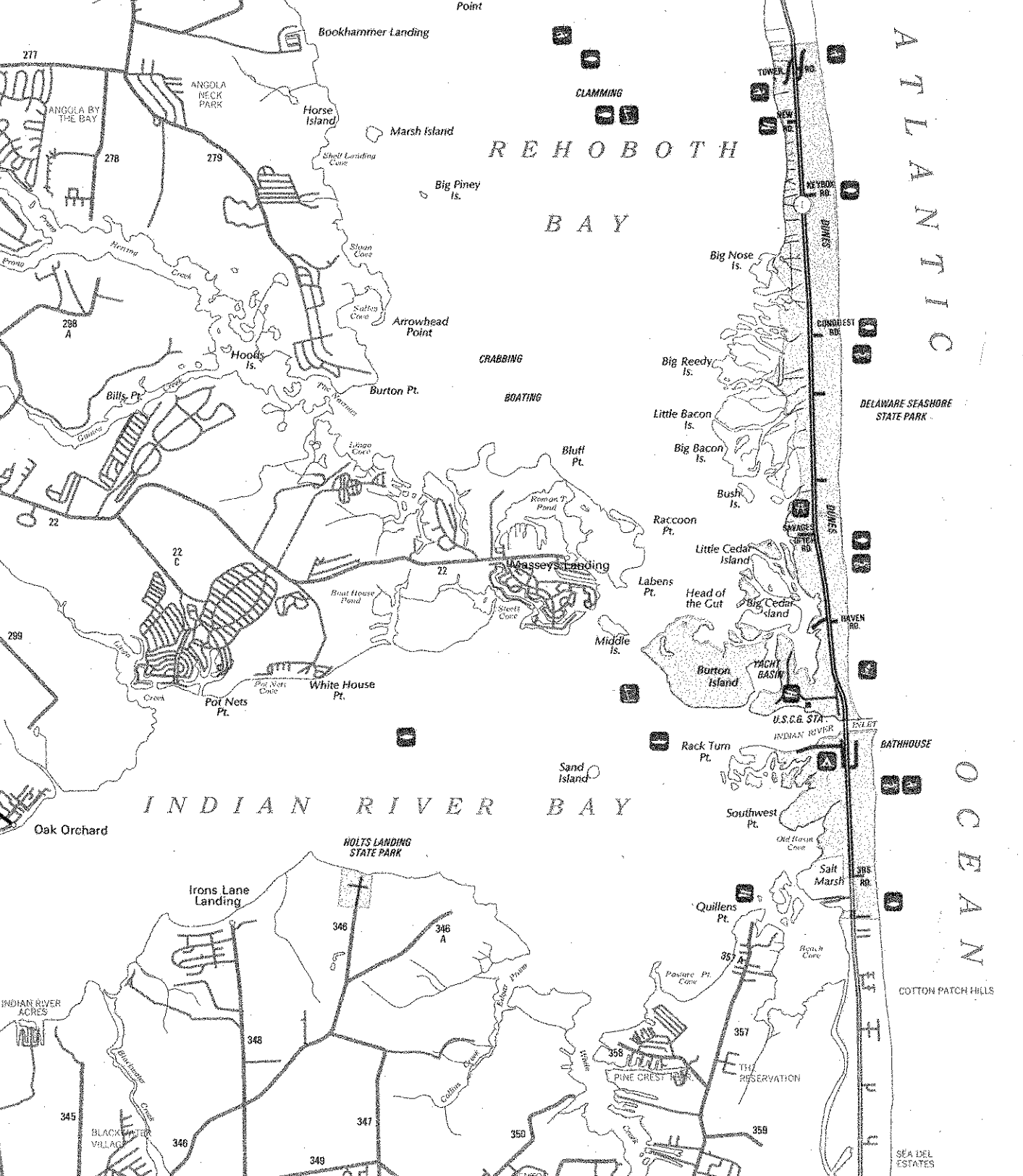
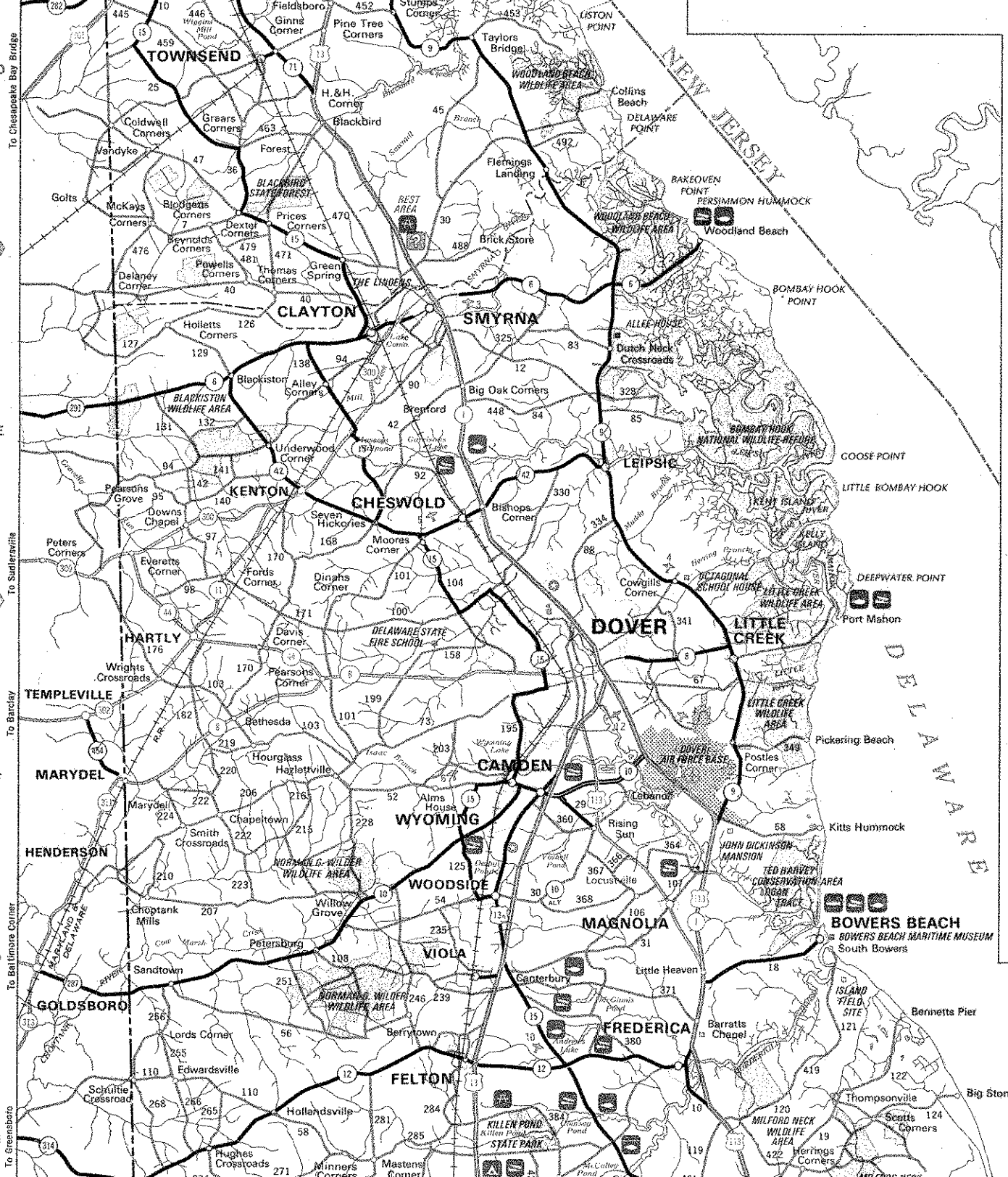
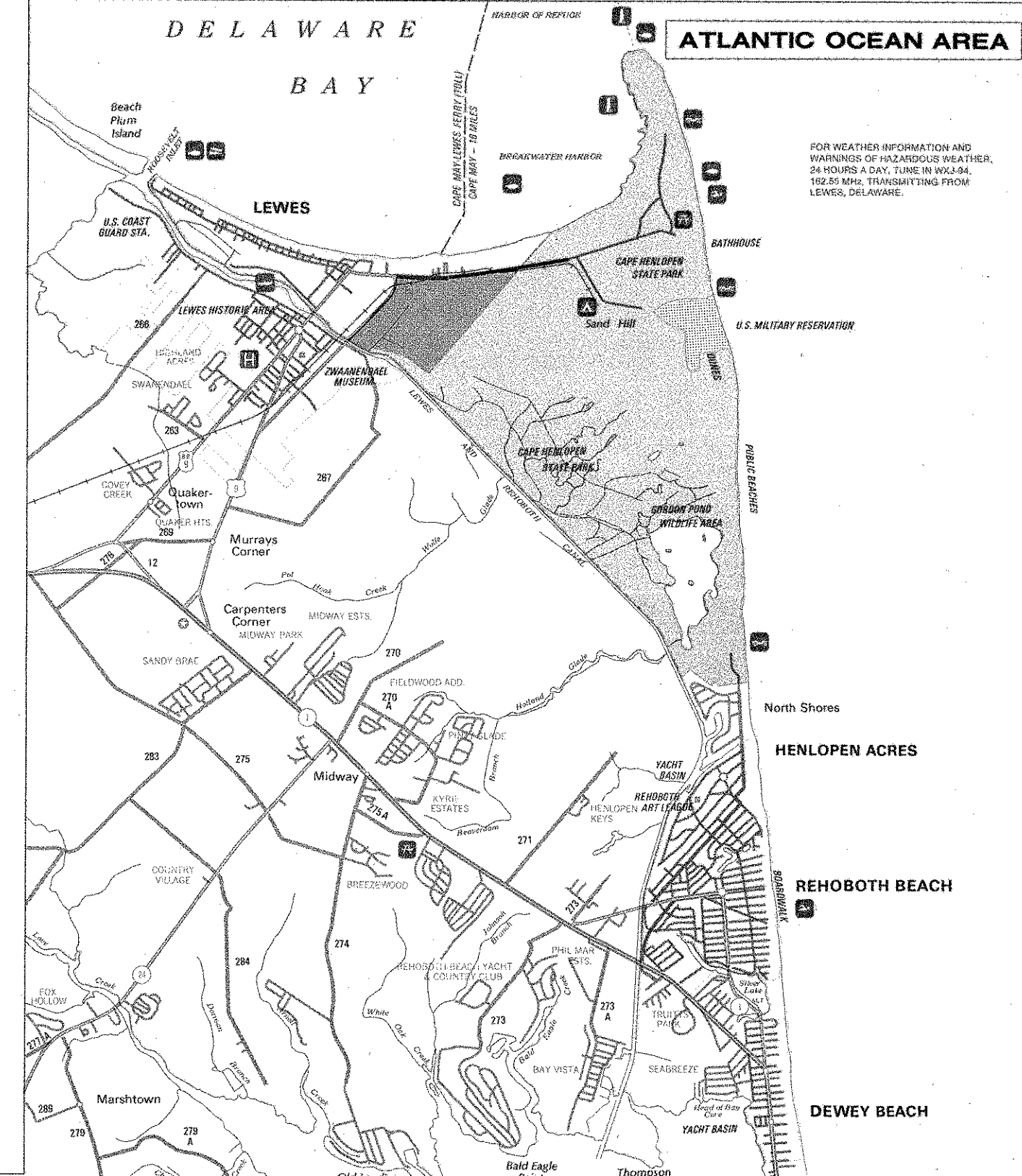
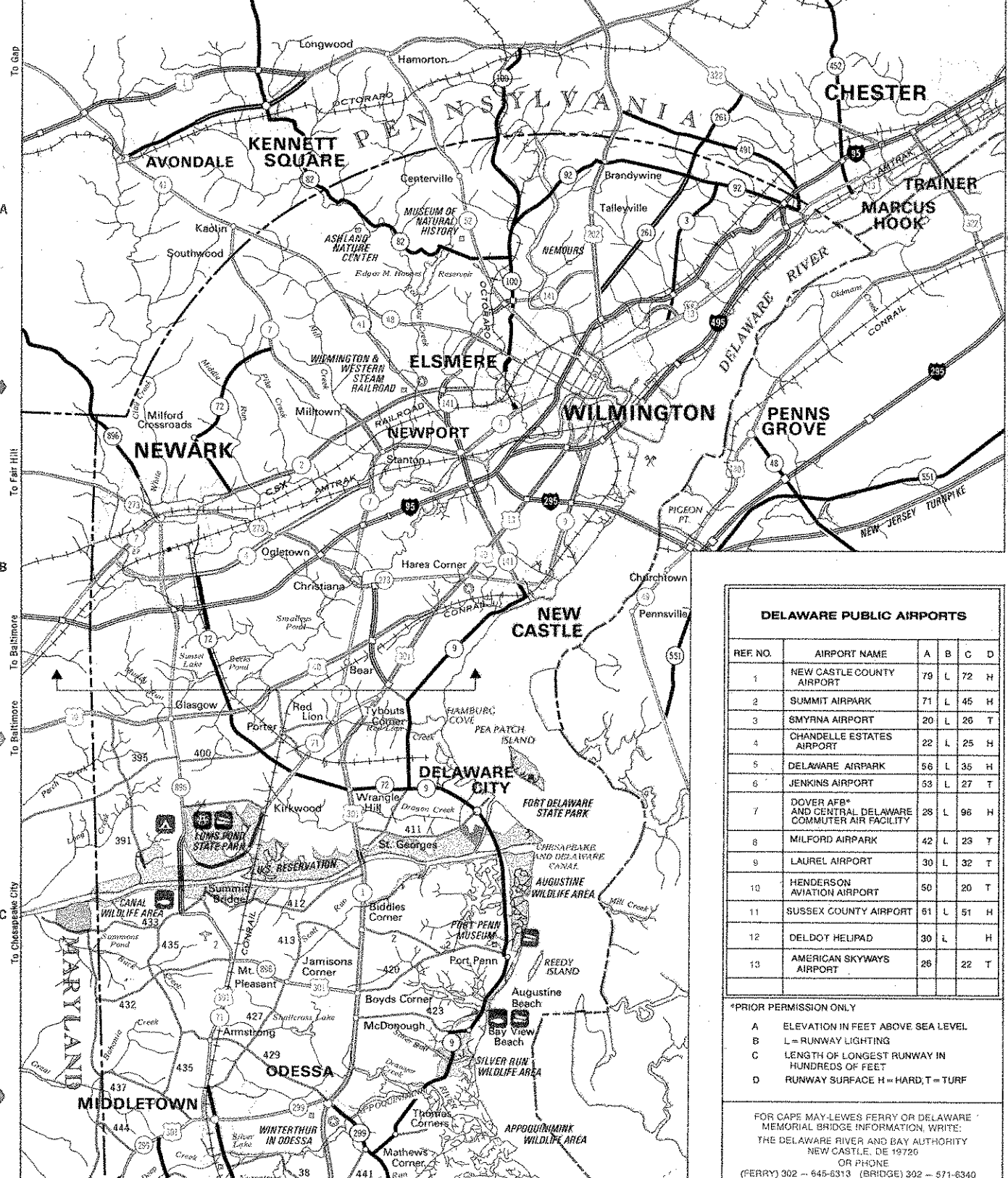


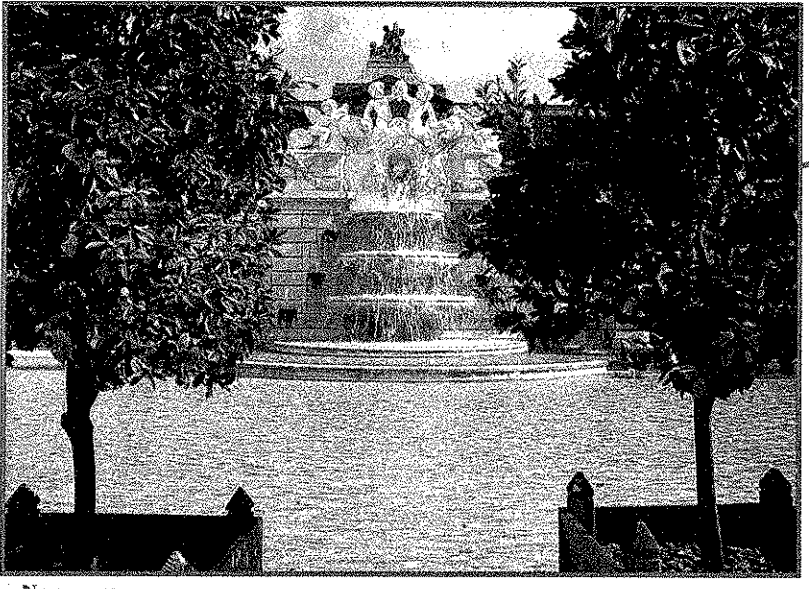
INDEX OF CITIES, TOWNS, AND PLACES

Adams Crossroads	H-1	Belleville 1,258	I-10	Elmhurst 381	H-2	Hoboken	A-1	Mechanicville	B-1	Phillips Hill	J-3	Southwood	A-1
Albion	H-1	Bladensburg	J-1	Elmhurst 483	A-2	Hobokenville	G-1	Mane Crossroads	G-1	Planting Beach	J-3	St. Georges	B-1
Albion House	F-2	Broad Creek	J-1	Elmhurst Center	F-1	Hobokenville	E-1	Mane Crossroads	G-2	Planting Beach	J-3	St. Georges	B-1
Albionville	H-1	Broad Creek	J-1	Elmhurst Center	F-1	Hobokenville	E-1	Mane Crossroads	G-2	Planting Beach	J-3	St. Georges	B-1
Albionville	H-1	Broad Creek	J-1	Elmhurst Center	F-1	Hobokenville	E-1	Mane Crossroads	G-2	Planting Beach	J-3	St. Georges	B-1
Albionville	H-1	Broad Creek	J-1	Elmhurst Center	F-1	Hobokenville	E-1	Mane Crossroads	G-2	Planting Beach	J-3	St. Georges	B-1

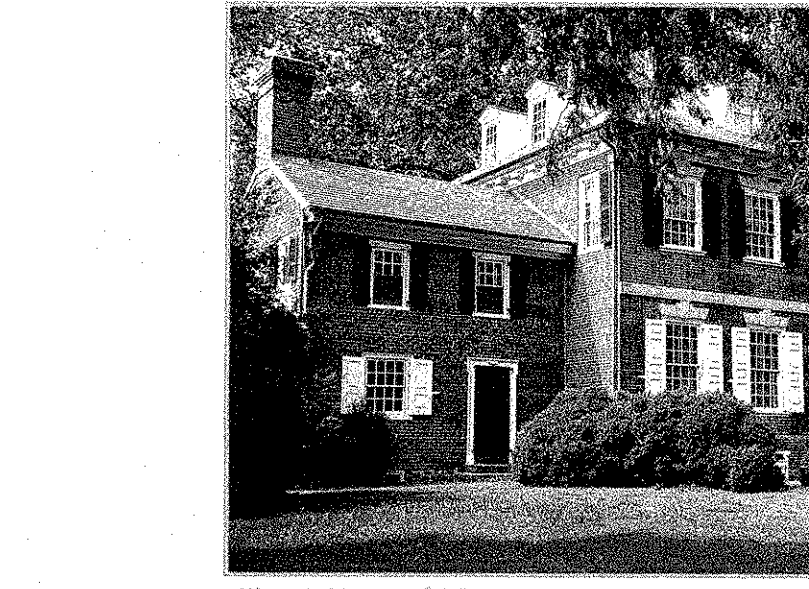


DELAWARE

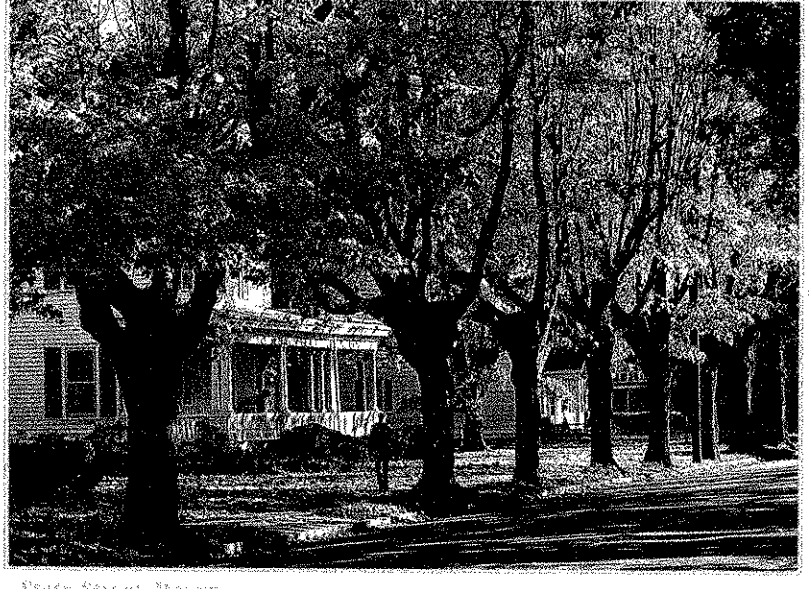
the first state



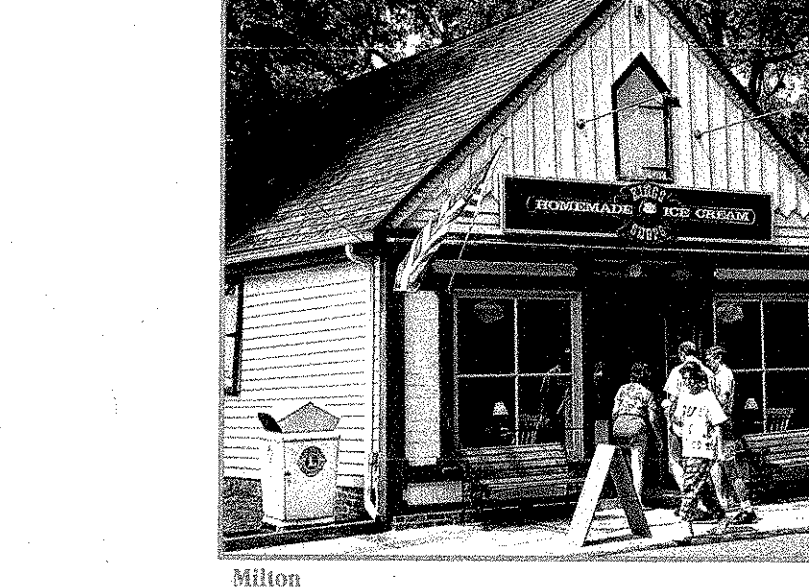
Nemours
Brandywine Valley - Just outside of Wilmington, where northern Delaware meets southeast Pennsylvania, is the region known as the Brandywine Valley. Visitors to this scenic area will discover numerous opportunities to tour large sprawling estates, spectacular gardens and world class museums, all set in the quiet rolling hills of the Brandywine Valley.



Historic Houses of Odessa
Odessa - The town of Odessa is located halfway between Dover and Wilmington. Shady streets invite visitors to stroll and admire the 18th- and 19th-century architecture situated there. Properties known as Historic Houses of Odessa are open for public tour between the months of March through December.



White Street, Dover
Dover - Visitors to Dover, the state's capital, are often surprised when they turn off the highway to discover a lovely town dotted with colorful flower gardens and stately colonial and Victorian homes. Brick sidewalks lead to specialty shops, historic homes and government buildings, many of which are open for public tour. Those looking for excitement can find NASCAR and harness racing at Dover Downs, tour the free world's largest cargo plane at Dover Air Force Base or attend one of the area's many special events such as the Fall Harvest Festival at the Delaware Agricultural Museum or the Delaware State Fair in Harrington.

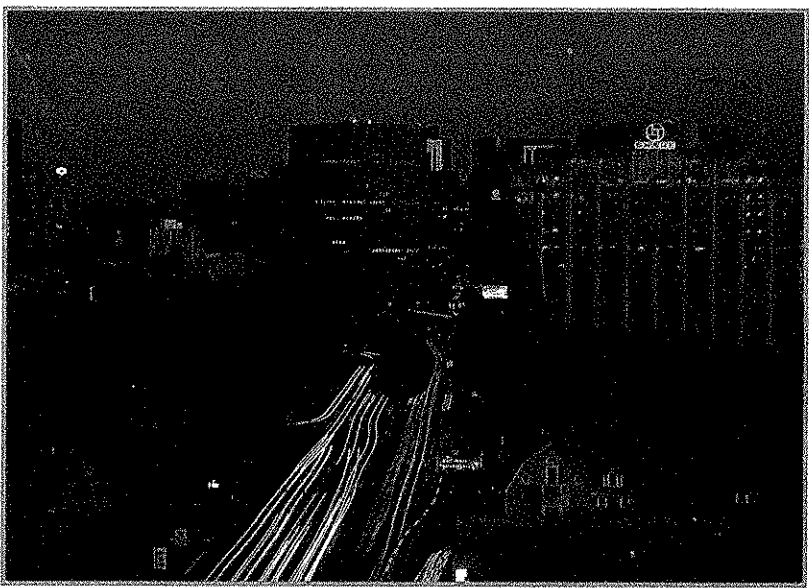


Milton
The Towns of Inland Southern Delaware - This region of Delaware is filled with several delightful small towns with yesteryear charm. Many of these towns sit on the banks of historic rivers and are the perfect place to find out-of-the-way antique shops or quaint bed and breakfast retreats. Visitors here can also discover countless opportunities for outdoor recreation - from canoeing through a bald cypress swamp to bicycling through this remarkably scenic region.



Rehoboth Beach
Atlantic Coast Beaches - Delaware's Atlantic coastline offers outdoor pleasures and family enjoyment year round. Memorial Day weekend through Labor Day is peak season, but spring and fall months are popular for get-away weekends. The beach communities feature a variety of special events to interest visitors throughout the year.

Wilmington - Wilmington's recognition as a major international financial center has fostered state-of-the-art meeting facilities and businesses which cater to the corporate community. Business and pleasure travelers alike will find a surprisingly large variety of outstanding attractions and entertainment from one of the world's largest collections of Pre-Raphaelite art at the Delaware Art Museum to outstanding performances by world-renowned artists at the Grand Opera House.



TRANSPORTATION SERVICES
DELAWARE ADMINISTRATION FOR REGIONAL TRANSIT (DART) provides regularly scheduled transit service within northern New Castle County and the greater Wilmington area. Twenty-one routes operate Monday through Friday from approximately 6:00 a.m. to 8:00 p.m. Twelve routes operate on Saturdays. Fares vary by both time of day and fare zones traveled. For individual printed route schedules and additional information, call the DART HOTLINE at (302) 655-3381.

COMMUTER RAIL - THE DELAWARE RAIL ADMINISTRATION in conjunction with Southeastern Pennsylvania Transportation Authority (SEPTA) provide weekday commuter service between Wilmington and Philadelphia. Train schedules and fare information are available at the Wilmington Train Station and at any SEPTA ticket office. For additional information, call (215) 574-7800.

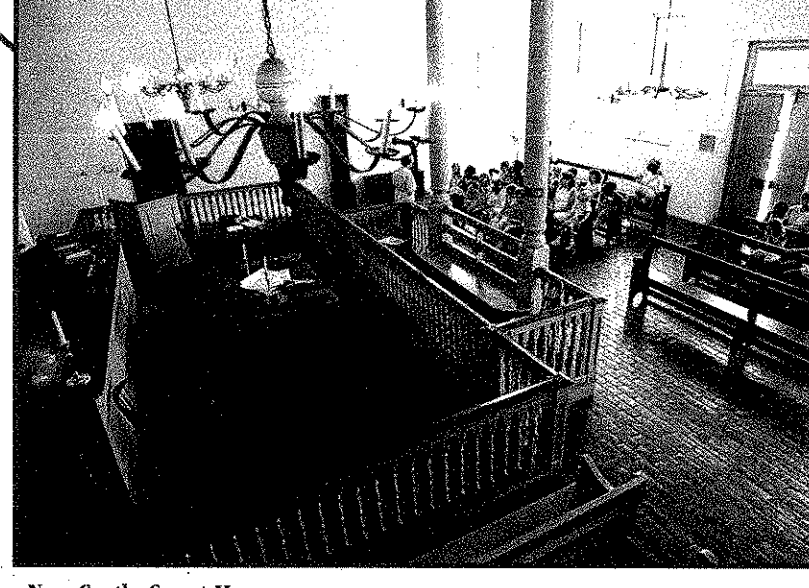
DELAWARE ADMINISTRATION FOR SPECIALIZED TRANSPORTATION (DAST) provides statewide, door-to-door transportation for the qualified handicapped. DAST vehicles are lift-equipped and able to transport individuals restricted to a wheelchair. For additional information, call (302) 739-3278.

HANDIRIDE SERVICE is designed to provide eligible individuals with specialized transportation service at reduced cost, and requires reservations 24 hours in advance. DAST provides this service as an extension of the public transportation in Delaware. It is available throughout the state and is a ground floor, door-to-door, driver-assisted service. Individual citizens who are confined to a wheelchair, blind or require the use of special devices to ambulate, and are unable to drive conventional automobiles utilize public transportation or taxicab services may be eligible for HandiRide service. For additional information on eligibility, registration and service hours, call (302) 571-2995 in New Castle County, (302) 739-3278 in Kent County and (302) 856-5260 in Sussex County.

Delaware's **RIDE SHARING ADMINISTRATION** is designed to assist those who work or reside in the state in joining or initiating a carpool. Those interested are asked to complete a questionnaire which includes name, address, work address, work hours and other necessary information. Participants are then computer-matched to carpools. There is no charge for this service. For questionnaires or additional information, call (302) 571-6380 in New Castle County.

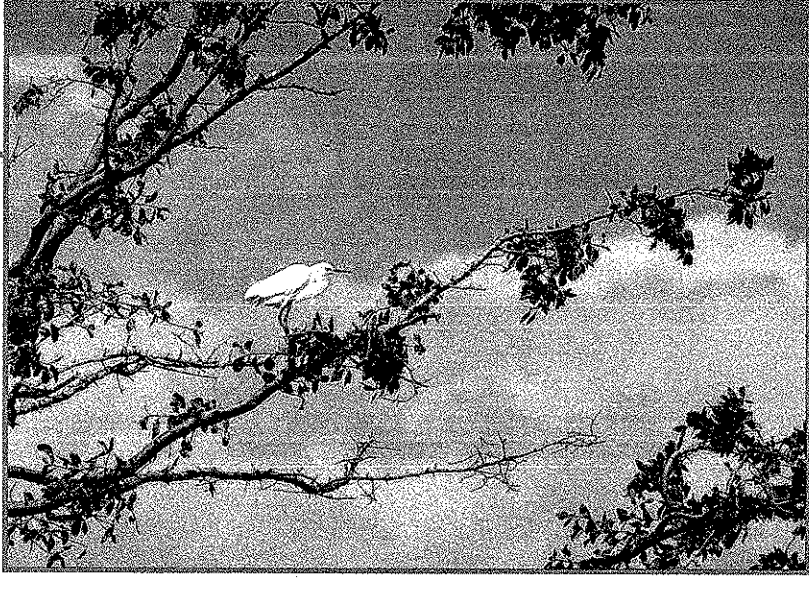
THE SENIOR CITIZEN AFFORDABLE TAXI (SCAT) program is a cooperative effort between the State of Delaware and local taxi firms, which provides a 50% discount from the metered fare for senior citizens and qualified ambulatory handicapped. Fares are paid with pre-purchased discount tickets for this 7-day a week service. For additional information in Greater Wilmington, call (302) 654-4100; in Newark, call (302) 368-3620.

UNISTATE - UD TRANSIT provides morning and evening weekday bus service, in each direction, between the University of Delaware's Newark and Lewes campuses. Intermediate stops are made at Middletown, Smyrna, Dover and Milford. Buses are wheelchair lift-equipped. For additional information, call (302) 451-1187.

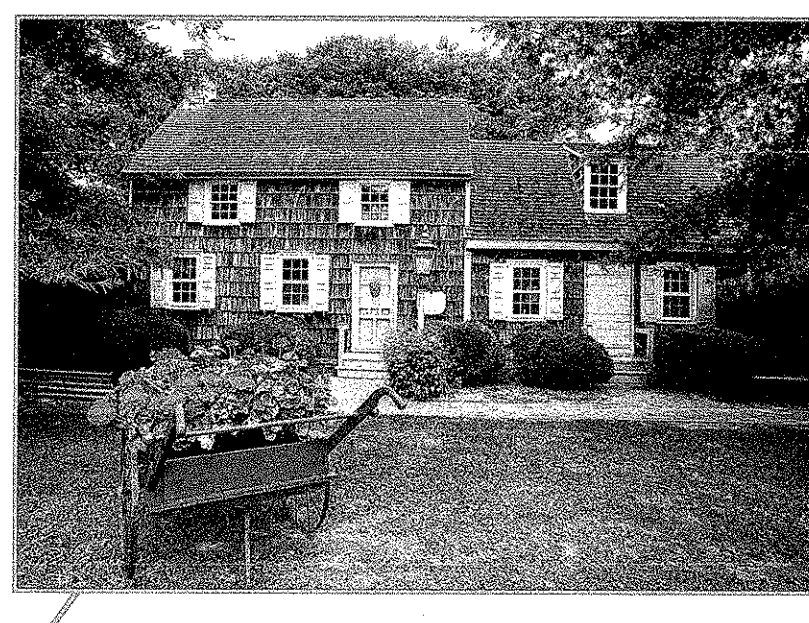


New Castle Court House

New Castle - This historic town is tucked away on the banks of the scenic Delaware River just south of Wilmington. Visitors can take a walking tour along the cobblestone streets lined with quaint shops, eateries and historic homes which date as far back as the 1600s. Many of the homes and historic structures are open for public tour from March through December.



Scenic Route 9 and Bombay Hook Wildlife Refuge - Some of the region's most outstanding scenery can be found by leaving Route 13 and driving along scenic Route 9 which runs from Dover to New Castle. Visitors can stop along the way at waterside fishing villages to enjoy local favorites such as steamed crabs. Just east of Route 9 is Bombay Hook National Wildlife Refuge where thousands of Canada geese and other migratory birds fill Delaware's skies from late autumn to early spring.

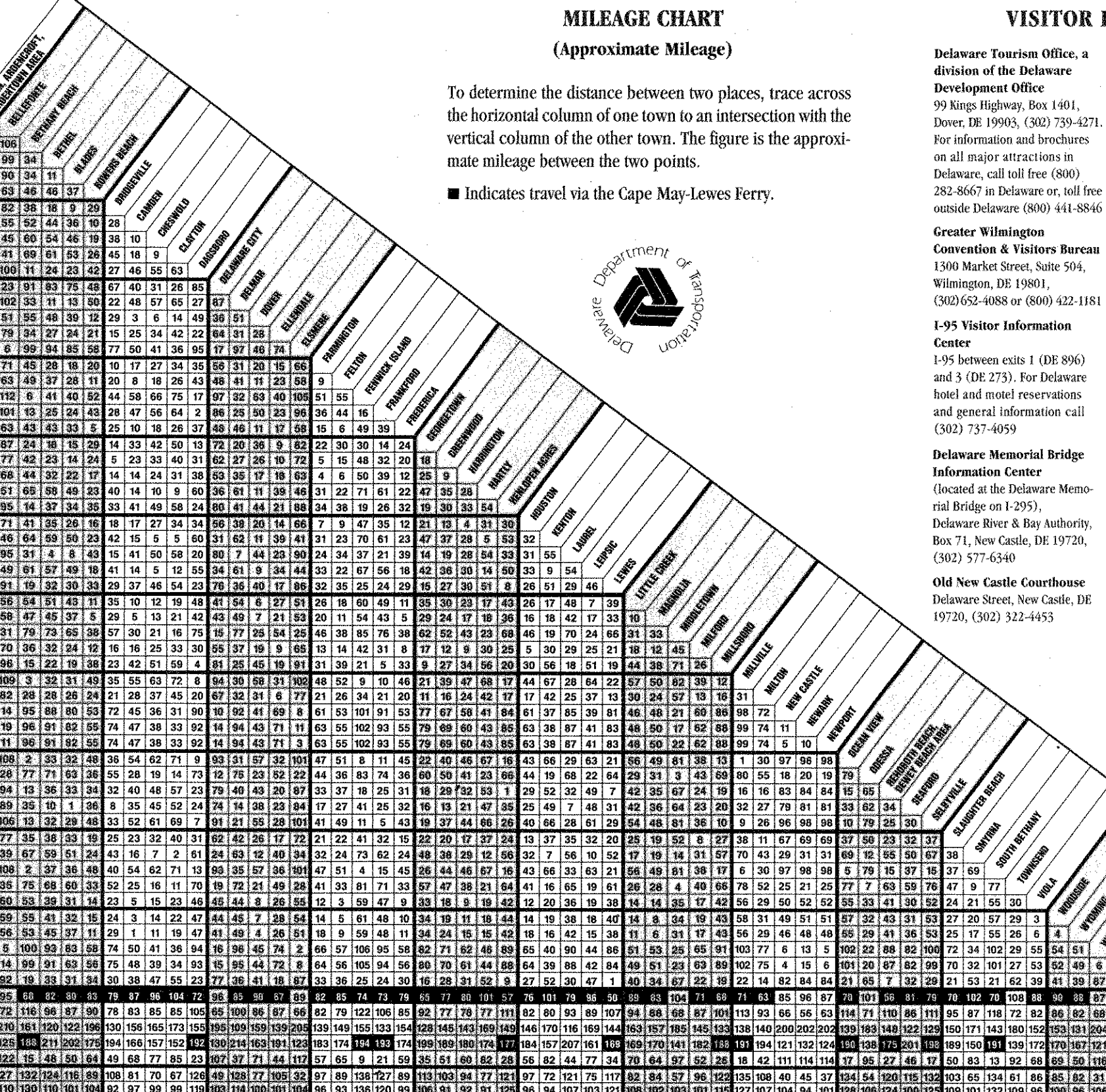


Lewes - Lewes (pronounced "Lewis") sits on the Delaware Bay and is linked to the Atlantic Ocean by Cape Henlopen State Park. Known for its fishing marinas, Lewes is the southern terminal of the Cape May-Lewes Ferry that crosses the mouth of the Delaware Bay. Lewes is also the site of an enclave of restored buildings and homes.

STATE PARKS FACILITIES GUIDE

County	Park Name	Acreage*	Facilities														
			Boating	Boat Rentals	Camping - Family	Camping - Youth	Drinking Water	Fishing	Game Center/ Ball Fields	Historic Sites	Visitor Nature Center	Nature Trails	Picnicking	Refreshments	Swimming/Beach	Dump Stations	
NEW CASTLE COUNTY	Bellevue	273															
	Brandywine Creek	795	*														
	Walter S. Carpenter, Jr.	1,164			*	*	*	*	*	*	*	*	*	*	*	*	*
	Fort Delaware	288			*	*	*	*	*	*	*	*	*	*	*	*	*
	Fox Point	171											*	*	*	*	*
KENT COUNTY	Lums Pond	1,757	*	*	*	*	*	*	*	*	*	*	*	*	*	*	*
	Killens Pond	878	*	*	*	*	*	*	*	*	*	*	*	*	*	*	*
SUSSEX COUNTY	Cape Henlopen	3,270	*	*	*	*	*	*	*	*	*	*	*	*	*	*	*
	Delaware Seashore	1,851	*	*	*	*	*	*	*	*	*	*	*	*	*	*	*
	Fenwick Island	208	*	*	*	*	*	*	*	*	*	*	*	*	*	*	*
	Holls Landing	301	*	*	*	*	*	*	*	*	*	*	*	*	*	*	*
	Trap Pond	966	*	*	*	*	*	*	*	*	*	*	*	*	*	*	*

* Designates available facilities * Designates barrier-free access *Acreage totals include satellite areas owned & managed by Delaware State Parks



VISITOR INFORMATION

Delaware Tourism Office, a division of the Delaware Development Office
 99 Kings Highway, Box 1401, Dover, DE 19903, (302) 739-4271. For information and brochures on all major attractions in Delaware, call toll free (800) 282-8667 in Delaware or toll free outside Delaware (800) 441-8846.

Greater Wilmington Convention & Visitors Bureau
 1300 Market Street, Suite 509, Wilmington, DE 19801, (302) 652-4088 or (800) 422-1181.

I-95 Visitor Information Center
 I-95 between exits 1 (DE 896) and 5 (DE 273). For Delaware hotel and motel reservations and general information call (302) 737-4999.

Delaware Memorial Bridge Information Center
 (located at the Delaware Memorial Bridge on I-295), Delaware River & Bay Authority, Box 71, New Castle, DE 19720, (302) 577-4340.

Old New Castle Courthouse
 Delaware Street, New Castle, DE 19720, (302) 322-4455.

Visitor Center
 Margaret O'Neill Building, Federal Street, Dover, DE 19901, (302) 739-4266.

Rehoboth Beach Rehoboth Beach Chamber of Commerce
 501 Rehoboth Avenue, Box 216, Rehoboth Beach, DE 19721, (302) 227-2333 or (800) 441-1329.

Bethany-Fenwick Chamber of Commerce
 Box 1450, Bethany Beach, DE 19926, (302) 539-2100, (800) 962-7873.

Historic New Castle Visitors Bureau
 (located on Route 13 N, North of Smyrna), Delaware Department of Transportation, Box 778, Dover, DE 19903, (302) 655-8910.

Kent County Visitor Information Center
 South DuPont Highway, Smyrna, DE 19977, in Delaware (302) 653-6243, outside Delaware (800) 233-KENT.

Lewes Chamber of Commerce
 Kings Highway, Lewes, DE 19958, (302) 645-8073.

Smyrna Rest Stop Information Center
 (located on Route 13 N, North of Smyrna), Delaware Department of Transportation, Box 778, Dover, DE 19903, (302) 655-8910.

Greater Seaford Chamber of Commerce
 (located at 400 High St.), Box 26, Seaford, DE 19975, (302) 629-9690.

Delaware - we work hard to keep it beautiful and safe for you. Please place litter in proper receptacles and drive with care. Delaware is tough on drunken drivers. If you are arrested for driving under the influence of drugs or alcohol, expect to have your Delaware license taken away on the spot and your driving privileges revoked for a minimum of 90 days within three weeks of your arrest. In addition, you will face court-administered penalties including mandatory fines and mandatory attendance at an educational or rehabilitation program.

In Case of Emergency
 Dial 911 to reach the nearest police service anywhere in the state. Additionally, many police departments monitor C.B. Emergency Channel 9.

Speed Limits
 Maximum speed limits are listed below. In certain areas, the posted speed may differ from the maximum limit. Obey the limit as posted. There may be minimum speed limits as well as maximum limits posted in some locations. Please maintain the minimum speed limits to avoid creating a hazardous condition on the road.

Maximum Speed
 Limited access highways, divided highways
 and highways with four lanes or more 55 miles per hour
 Two lane roads 50 miles per hour
 Business and Residential Districts 25 miles per hour
 School Zones 20 miles per hour

In addition to posted speed limits, advisory speeds used along with warning signs indicate that conditions may exist to make it unsafe to drive faster. These signs are black letters on yellow signs.

Turns on Red
 You may turn right on a red light provided you come to a full stop before proceeding. You may also turn left from one way street onto another one way street while the lights are red. Do not turn on red when the intersection is posted with a sign reading "No Turn On Red" or when the traffic signal displays a continuous red turn arrow.



Dear Visitor:
 Welcome to Delaware, the Small Wonder State. A wide variety of attractions, recreation and business opportunities await you. Delaware, the first state to ratify the United States Constitution, has a long and proud heritage of balancing economic opportunity and growth with a quality of life that we believe is special to our state. From major corporations to farming to small businesses, the men and women of Delaware have been working to make the First State a leader in many different fields of endeavor. Whether you are here on business, pleasure or just traveling through, you will find that Delaware offers a number of diverse activities to serve all interests. From our beaches and parks to our museums and attractions, the Small Wonder State has a lot to share. I hope your visit to Delaware is an enjoyable one and that you will return often. We're proud of our state and delighted to share it with you.

Michael N. Castle
 Michael N. Castle
 Governor

DELAWARE

SMALL WONDER
OFFICIAL STATE MAP

