

- LEGEND:**
- RTT/RWT STUDY CORRIDOR ALIGNMENT
 - STATE PARKS & RECREATIONAL AREAS
 - RETAIL AREAS
 - SCHOOLS
 - PHOTO LOCATION
 - EXISTING PEDESTRIAN/BIKE FACILITIES
 - MUNICIPAL BOUNDARIES
 - WATER EDGE
 - 100 YR FLOOD PLAIN
 - PROPERTY AND RIGHT-OF-WAY LINES
 - BRIDGE LOCATIONS
 - TRANSIT ROUTES
 - ACTIVE RAIL LINES
 - EXISTING STATEWIDE BIKE ROUTES
 - PROPOSED STATEWIDE BIKE ROUTES
 - PROPOSED REGIONAL BIKE ROUTES
 - PROPOSED RECREATIONAL BIKE ROUTES



RAIL CORRIDOR EXISTING CONDITIONS DATA:

Rail Corridor Study Limits: from the Frawley Stadium area south and east across the Christina River and north to the Walnut Street Bridge and 'A' Street area, with a small trail spur north to the Riverfront Park promenade

Total Length: 2.3 miles

Active: no, study corridor crosses active rail lines

Rail Corridor Condition: rails and ties have been removed, some areas of standing water along the corridor, open and clear on the east side of the river and vegetated with shrubs and tree saplings on the east side of the river

Bridges and Other Structures: original swing bridge for this corridor does not appear to be usable

Water Crossings/Culverts: 3 culverts and the Christina River

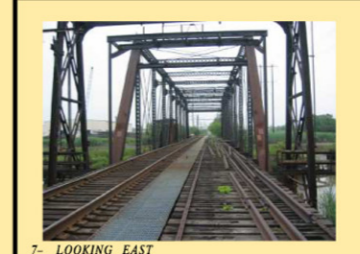
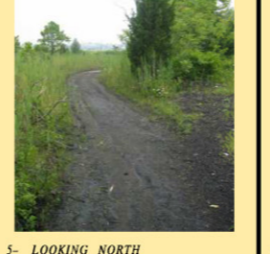
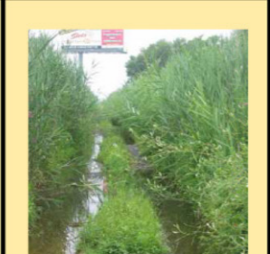
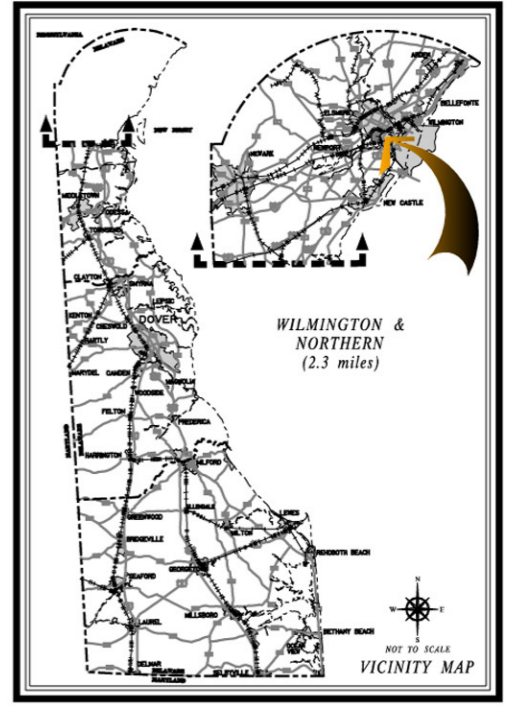
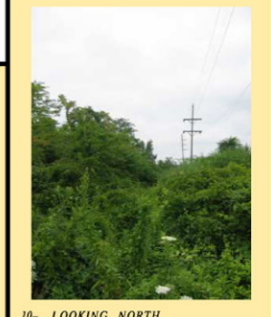
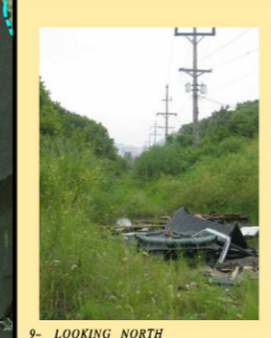
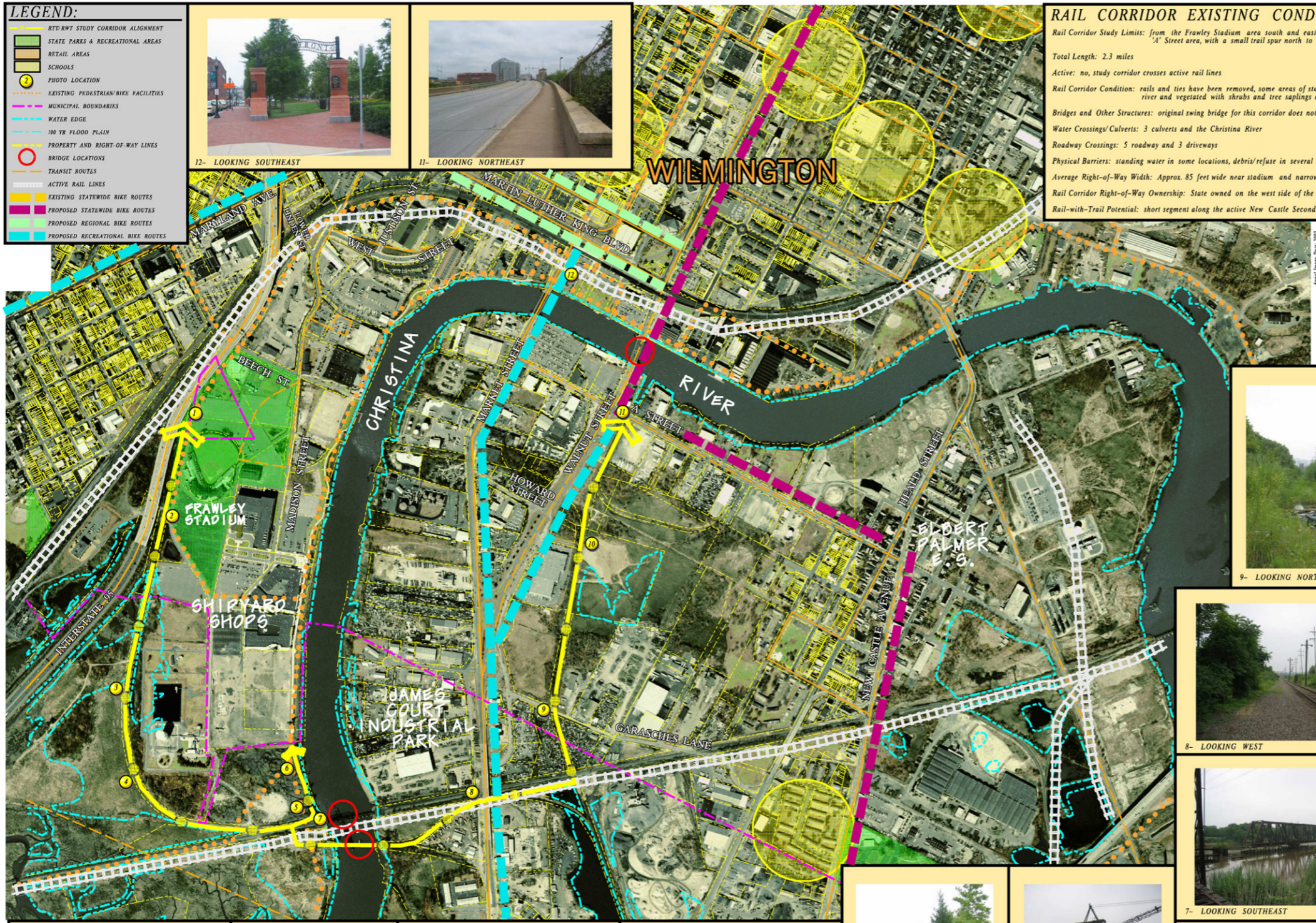
Roadway Crossings: 5 roadway and 3 driveways

Physical Barriers: standing water in some locations, debris/refuse in several locations, corridor is fenced off at one location

Average Right-of-Way Width: Approx. 85 feet wide near stadium and narrowing to 54 feet near the river

Rail Corridor Right-of-Way Ownership: State owned on the west side of the river, unknown ownership on the east side of the river

Rail-with-Trail Potential: short segment along the active New Castle Secondary line to cross the Christina River, would require 2 crossings of the active line



AVERAGE USER TRAVELING SPEEDS & CORRIDOR TRAVEL TIMES
(Study Corridor Distance = 2.3 miles)

Bicycle	13.1 miles per hour	approx. 11 min.
Walking	3.1 miles per hour	approx. 45 min.
Jogging	7.0 miles per hour	approx. 20 min.
Wheel Chair	2.4 miles per hour	approx. 1 hr.

For Preliminary Planning Purposes Only



DELAWARE RTT/RWT FACILITIES MASTER PLAN
WILMINGTON & NORTHERN
EXISTING CONDITIONS MARCH 2006

