

1952-1953  
**OFFICIAL HIGHWAY MAP**  
**OF**  
**DELAWARE**

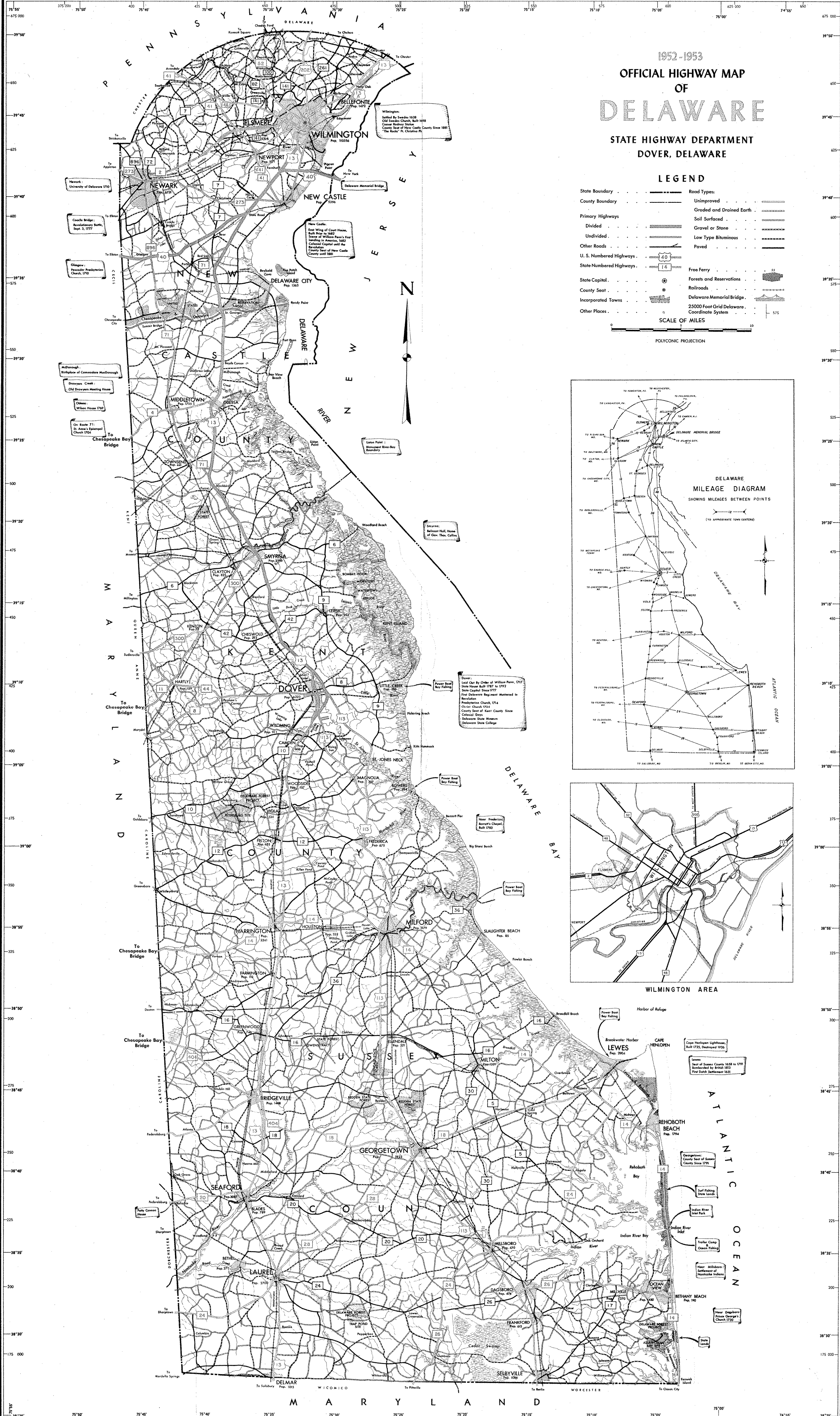
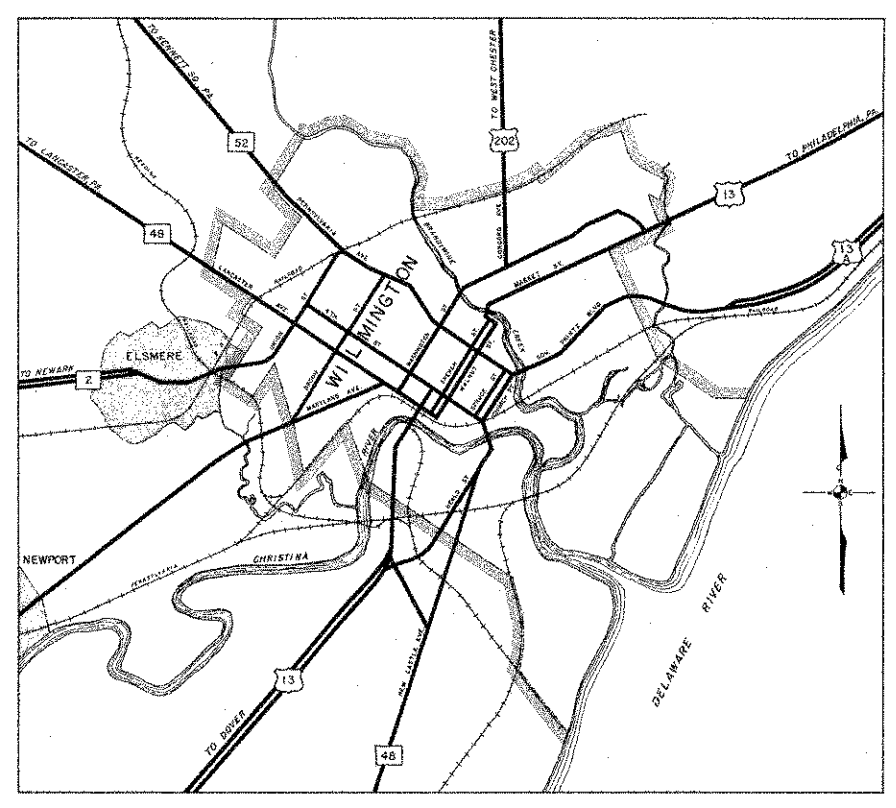
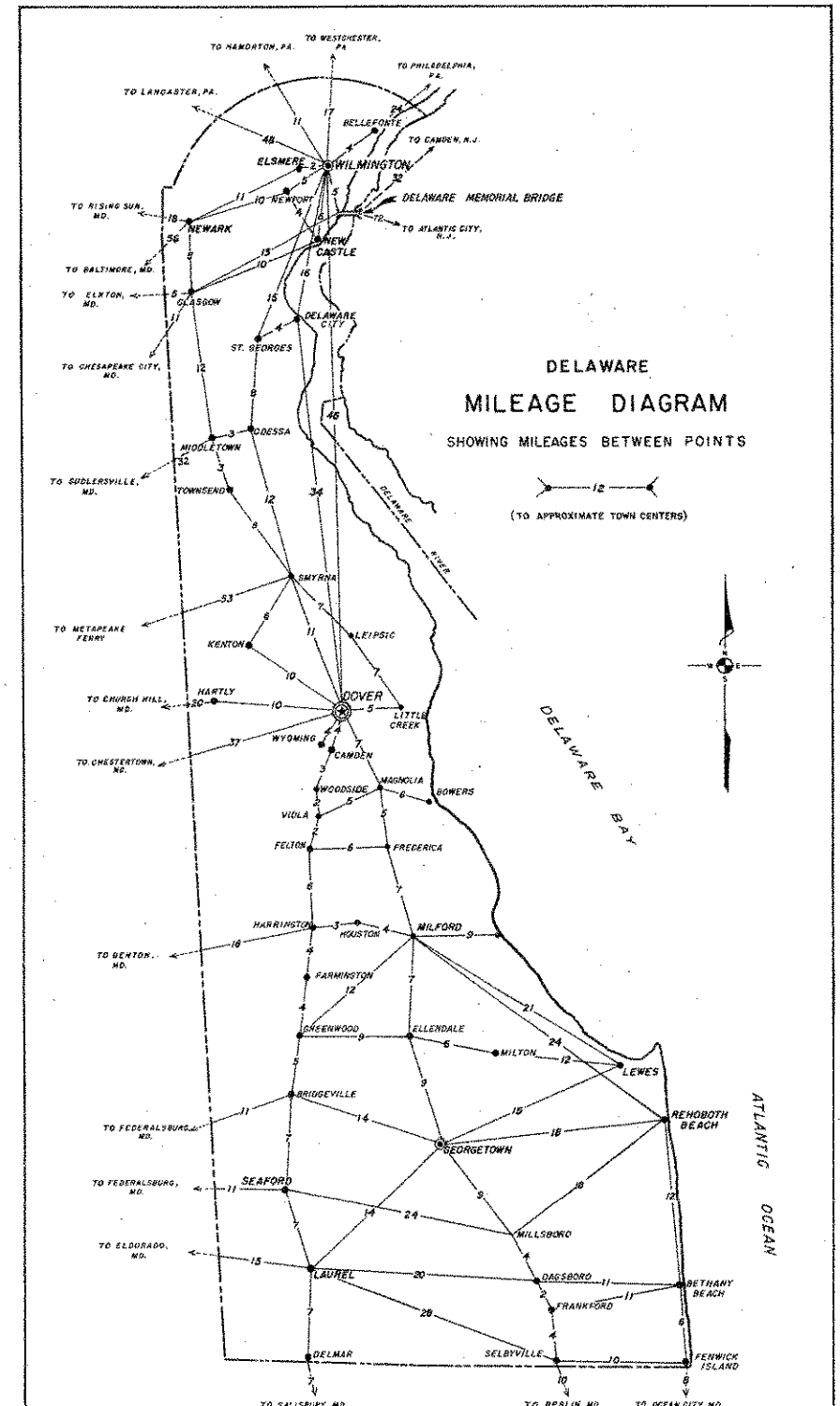
STATE HIGHWAY DEPARTMENT  
 DOVER, DELAWARE

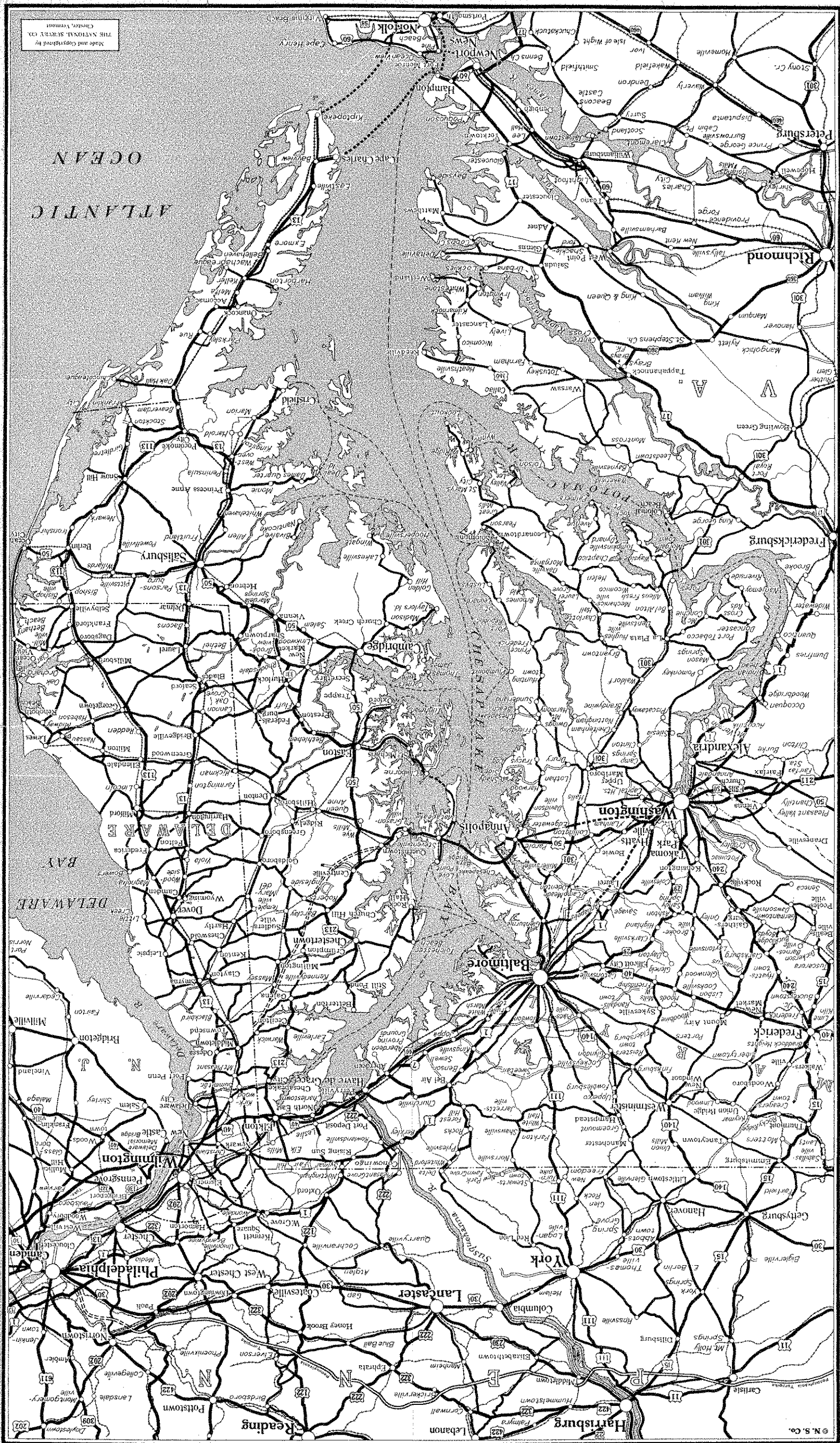
**LEGEND**

- |                         |       |  |       |
|-------------------------|-------|--|-------|
| State Boundary          | ----- | Road Types                                 | ----- |
| County Boundary         | ----- | Unimproved                                 | ----- |
| Primary Highways        | ----- | Graded and Drained Earth                   | ----- |
| Divided                 | ----- | Soil Surfaced                              | ----- |
| Undivided               | ----- | Gravel or Stone                            | ----- |
| Other Roads             | ----- | Low Type Bituminous                        | ----- |
| U. S. Numbered Highways | ----- | Paved                                      | ----- |
| State Numbered Highways | ----- | Free Ferry                                 | ----- |
| State Capital           | ⊙     | Forests and Reservations                   | ----- |
| County Seat             | ⊙     | Railroads                                  | ----- |
| Incorporated Towns      | ⊙     | Delaware Memorial Bridge                   | ----- |
| Other Places            | ⊙     | 25000 Foot Grid Delaware Coordinate System | ----- |

SCALE OF MILES  
 0 1 2 3 4 5 6 7 8 9 10

POLYCONIC PROJECTION



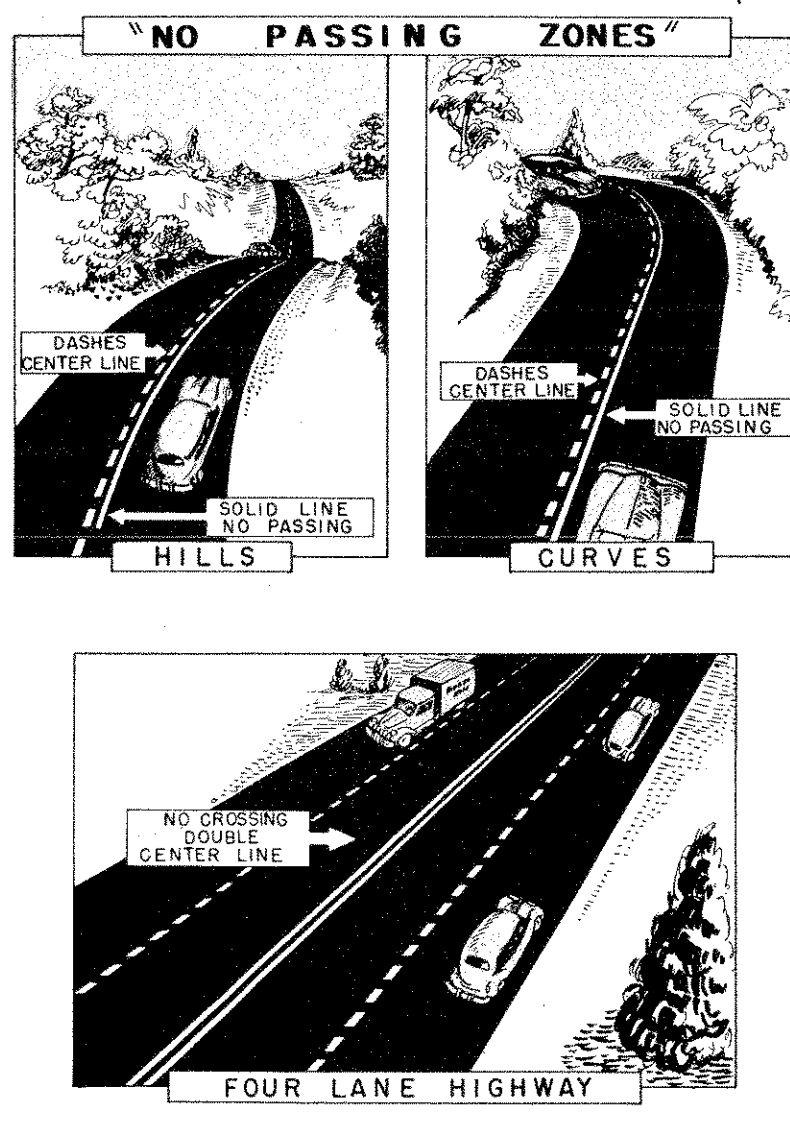
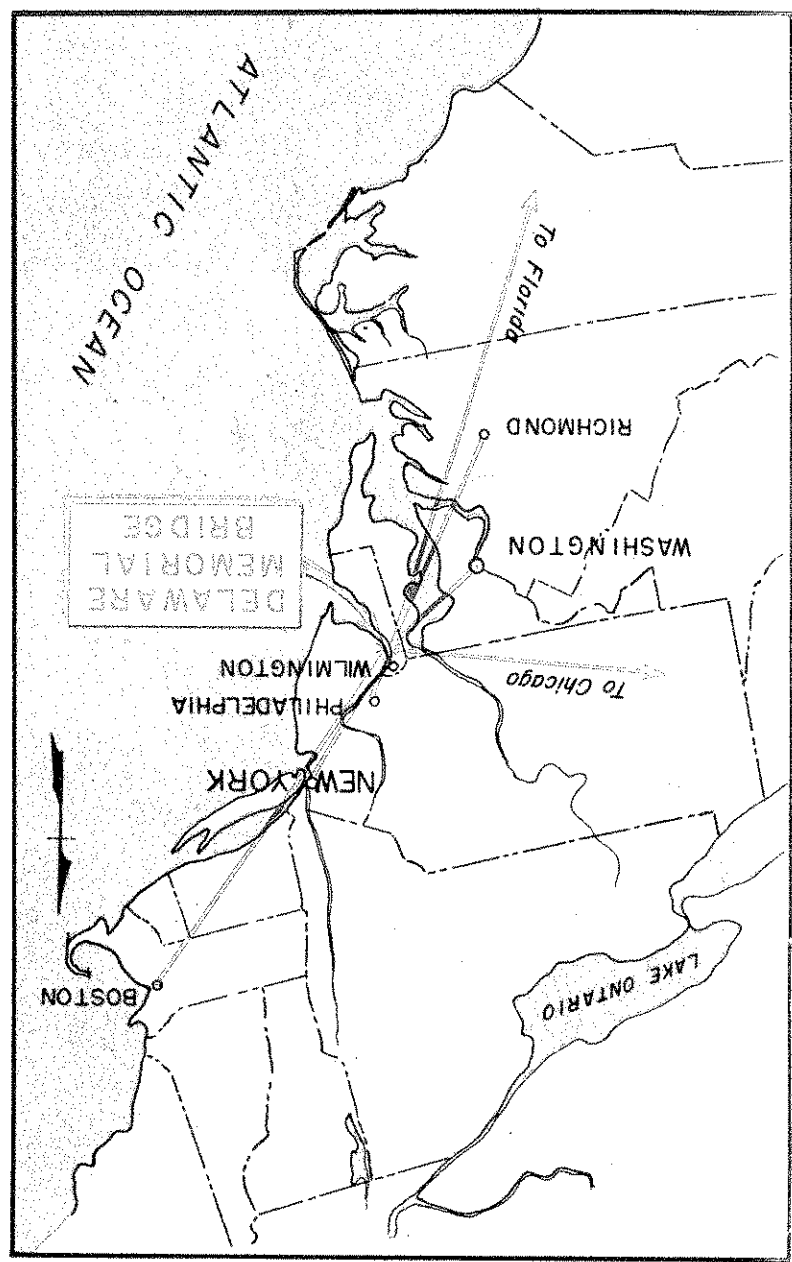


**FOR FREE DISTRIBUTION ONLY**

I. H. TYLER McCONNELL, Chairman  
 BENJAMIN F. SHAW II  
 DR. J. DRAPER BROWN, JR.  
 J. GORDON SMITH  
 WILLIAM P. RICHARDSON  
 SAMUEL N. CULVER, Chairman  
 CLAYTON A. BUNTING  
 RICHARD A. HARRIS, Chief Engineer  
 LEROY F. HAWKE, Secretary

**STATE HIGHWAY DEPARTMENT**  
 HON. I. CELLS ROGERS,  
 HON. ELBERT N. CARVEL, GOVERNOR

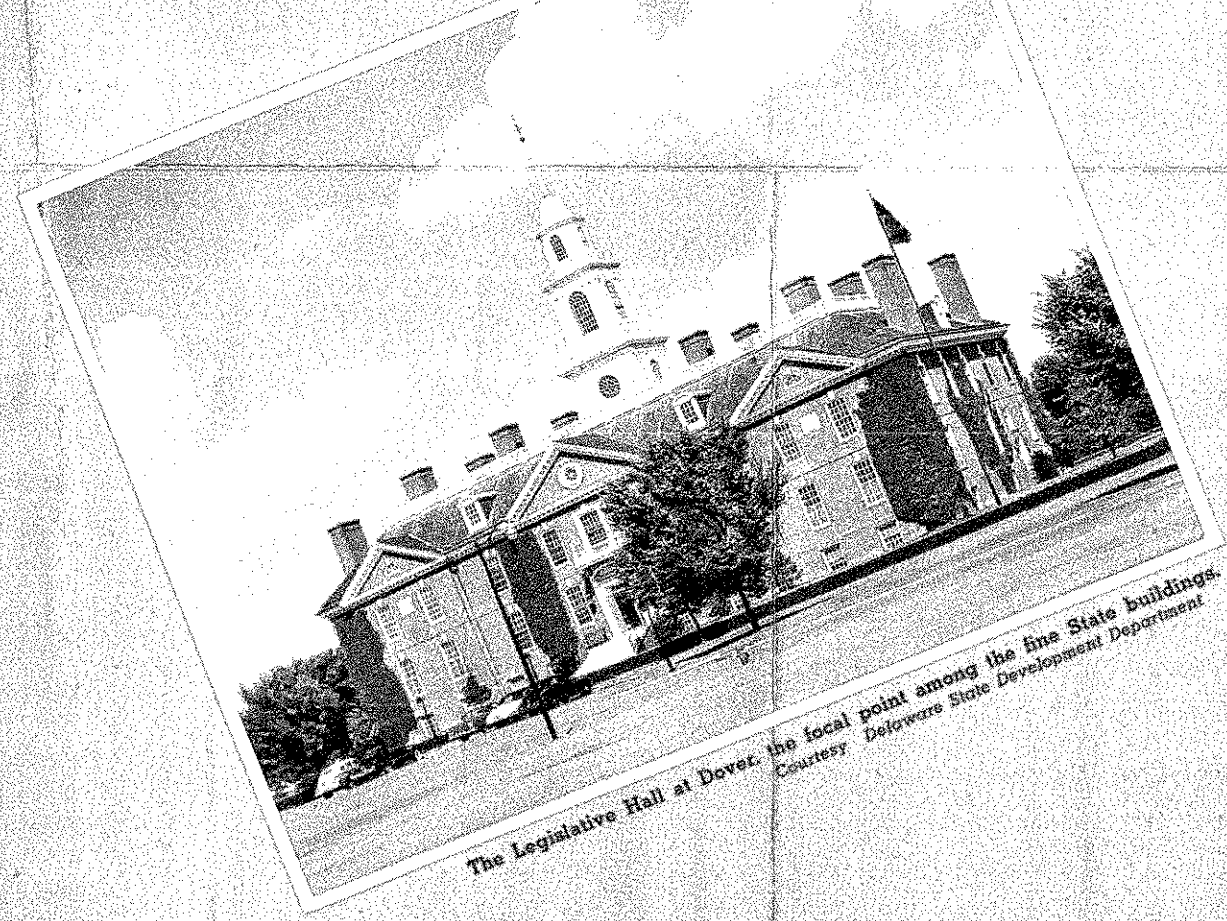
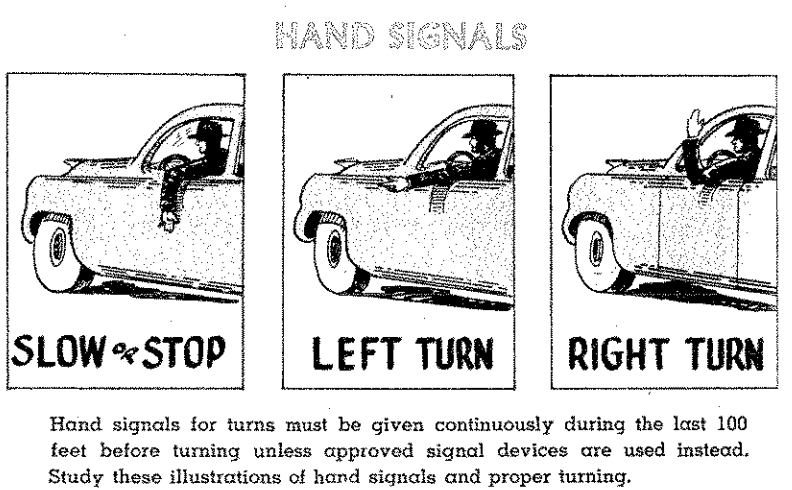
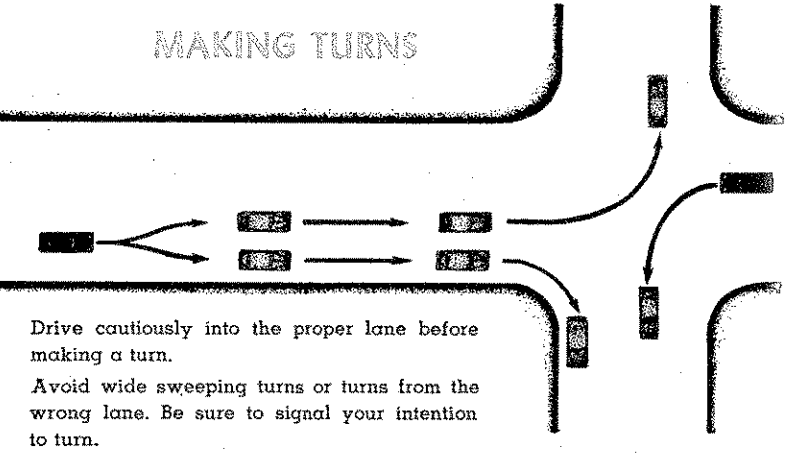
**1952-53**  
**OFFICIAL**  
**HIGHWAY**  
**MAP**  
**DELAWARE**



Delaware's No Passing zones are marked on the pavement with white lines and are strictly enforced. The rule is simple. A white line on your side of the center line means that you must not overtake or pass a vehicle or drive to the left half of the roadway until the white line on your side ends. Frequently, there is a white line on both sides which means that passing is prohibited from either direction.

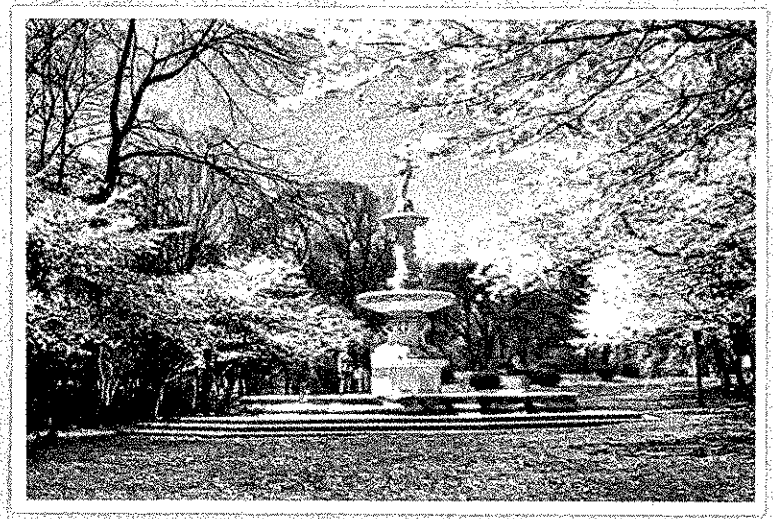
**DELAWARE STATE POLICE**

LOCATION	TELEPHONE NUMBER
Troop 1 — U.S. 13 North of Wilmington	Wilmington 2-8211
Troop 2 — U.S. 13 South of Wilmington	Wilmington 4-2436
Troop 3 — U.S. 13 North of Dover	Dover 5756
Troop 4 — U.S. 113 North of Georgetown	Georgetown 2534
Troop 5 — U.S. 13 North of Bridgeville	Bridgeville 600
Headquarters — U.S. 13 South of Wilmington	Wilmington 4-2437

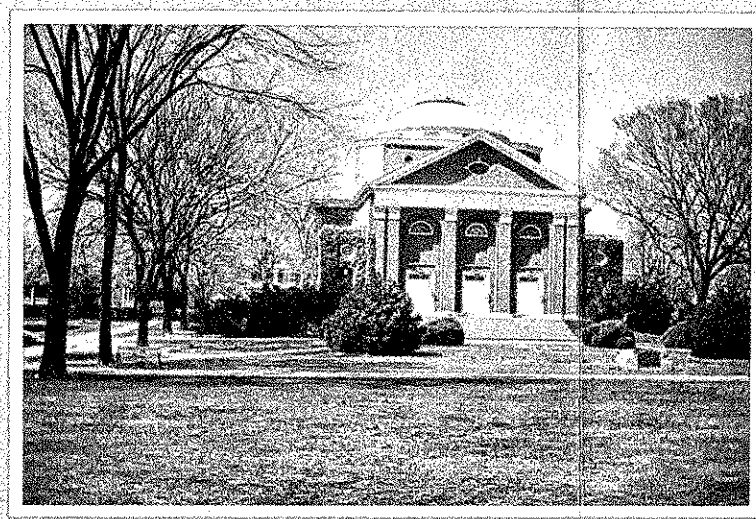


The Delaware Memorial Bridge, a four-laned suspension bridge across the Delaware river. South of Wilmington connecting Delaware with New Jersey. The total cost was \$44,000,000. It is the sixth largest bridge of its type in the world.

Delaware, the Blue Hen State, first of the original states to ratify the Constitution of the United States, presents a varied and interesting panorama. A mecca for those interested in well-preserved examples of Colonial architecture as well as those in search of a pleasant spot for relaxation. Delaware is a small state but ranks high in agricultural, industrial and commercial production. Located near the large markets in the East and with ideal climate and soil for diversified crops, the state is particularly adapted to farming. Delaware has much to contribute to the enjoyment and interests of all and extends a hearty welcome to its visitors.



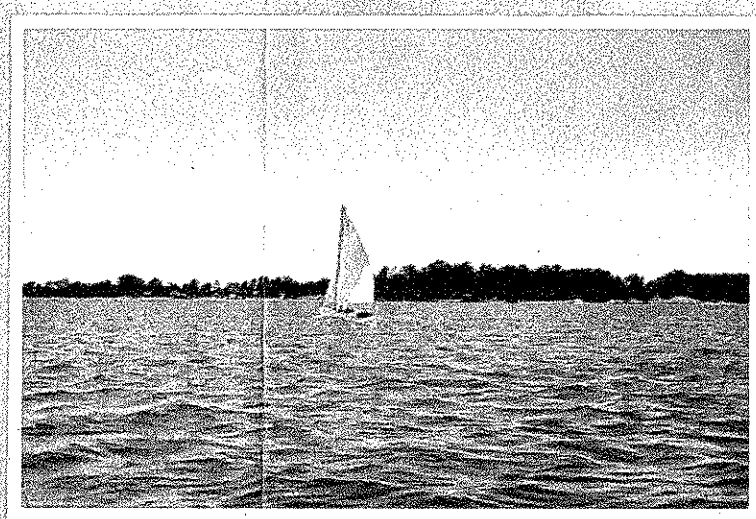
Japanese cherry blossoms at the Josephine Smith Memorial, Brandywine Park, Wilmington.  
 Courtesy: Chas. R. Schwartz



Scene on the University of Delaware campus at Newark.  
 Courtesy: C. D. Tebo



During the annual Dover Day event, costumes are worn, adding realism to the Colonial portrayal.



Sailing on Indian River Bay near Rehoboth Beach.  
 Courtesy: A. E. Pflanz