

INDEX OF CITIES, TOWNS AND PLACES

Alden	Ash	Avondale	Bellefonte	Blades	Bowling Green	Buckley	Cape Henrichs	Chesapeake	Christiana
Dover	Elsmere	Frankford	Georgetown	Greenwood	Harrington	Hockessin	Indian River	Kentwood	Laurel
Lewes	Millsboro	Milton	Newark	Ocean View	Pittsville	Rehoboth Beach	Salisbury	Smyrna	Wilmington
Wilmington	Wilmington	Wilmington	Wilmington	Wilmington	Wilmington	Wilmington	Wilmington	Wilmington	Wilmington

LEGEND

PRINCIPAL THROUGH HIGHWAYS
MULTILANE DIVIDED, ACCESS FULLY CONTROLLED
MULTILANE DIVIDED, ACCESS PARTIALLY CONTROLLED
MULTILANE TOLL ROAD
MULTILANE DIVIDED, ACCESS CONTROLLED UNDER CONSTRUCTION
MULTILANE DIVIDED
MULTILANE ENGINEERED
2 LANE, ACCESS FULLY CONTROLLED
2 LANE PAVED
OTHER THROUGH HIGHWAYS
MULTILANE DIVIDED
MULTILANE UNDIVIDED
2 LANE PAVED

OTHER HIGHWAYS
PAVED OR SURFACED
NOT SURFACED

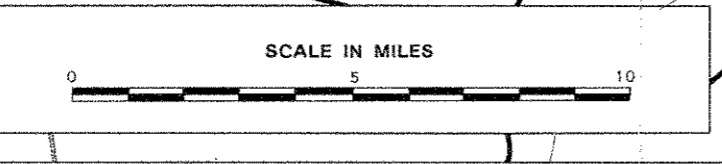
ROUTE MARKERS
INTERSTATE
UNITED STATES
STATE

ACCESS POINTS
FULL TRAFFIC INTERCHANGE
PARTIAL TRAFFIC INTERCHANGE
ACCESS DENIED

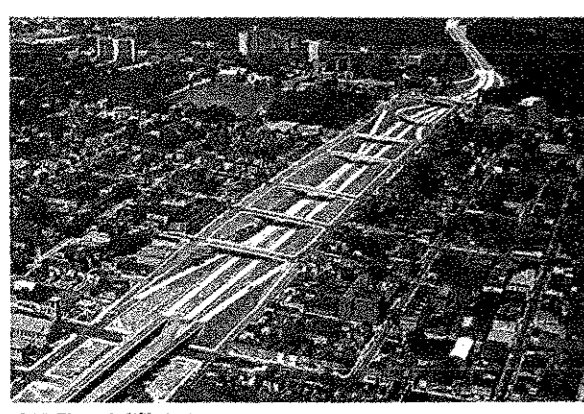
SYMBOLS
COMMERCIAL AIRPORT
MILITARY AIRPORT
OTHER AIRPORT
COLLEGE OR UNIVERSITY
STATE FISH WATCHERY
PUBLIC BEACH ACCESS
CHARTER BOAT FISHING
STATE PARK OR RESERVATION

POPULATION OF CITIES AND TOWNS
STATE CAPITAL
COUNTY SEAT
150-250
250-500
500-1,000
1,000-15,000
15,000-25,000
25,000-100,000

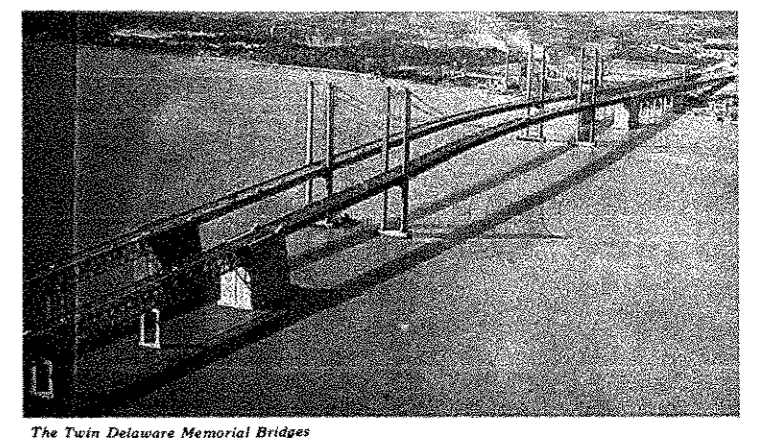
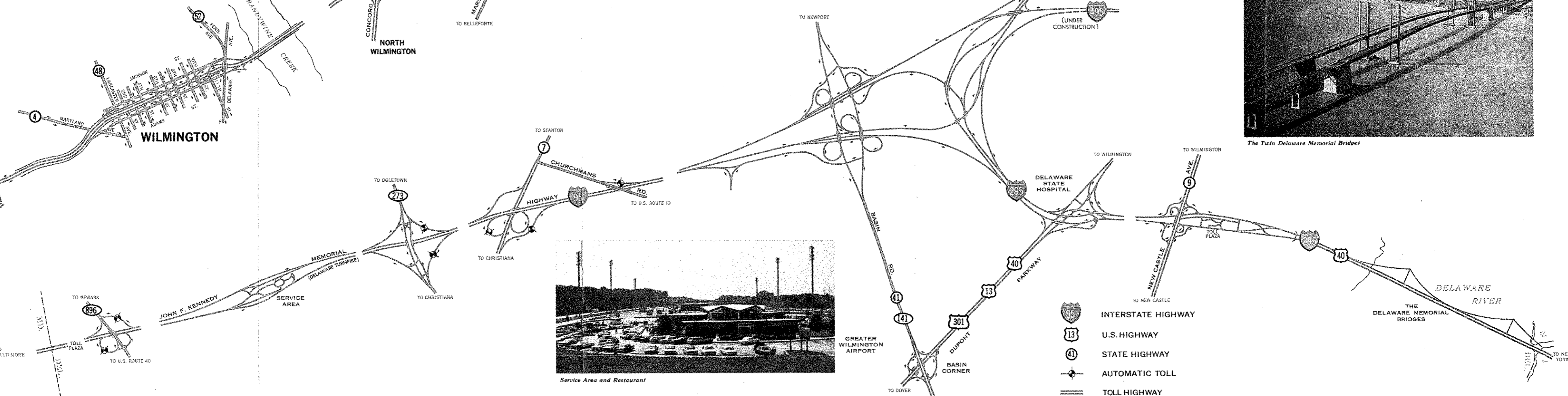
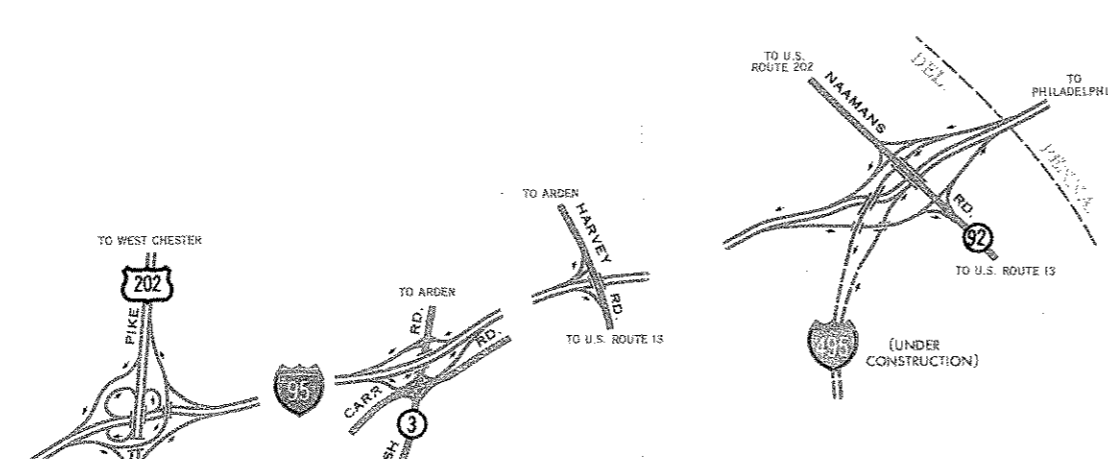
Prepared by the Delaware State Highway Department
Bureau of Highway Planning
Do not print or copy this map without the written permission of the Delaware State Highway Department.



Interstate Highways in Delaware



1-95 Through Wilmington



The Twin Delaware Memorial Bridges

Discover Wonderful Delaware

From the first settlement on Delaware soil in 1631, the Nation's second smallest state has played a manzior role in the progress of the United States. From Wilmington, the "Chemical Capital of the World," to southern Delaware, the heart of the Nation's broiler industry, the state reflects the past, present, and future of a growing nation.

Delaware's history has been marked by industrious businessmen. The state's first settlers, who landed near Lewes in 1631, represented a Dutch trading company hoping to take advantage of the riches in the New World. Unfortunately, the little colony had a fatal disagreement with neighboring Indians less than a year later. The Brandywine River in northern Delaware was the site of successful flour, paper, textile, powder, and leather mills in the 18th and 19th centuries. Many of these have since grown into vital businesses. Today, Delaware's inventive, progressive industries thrive in a state constantly attuned to the needs of the future. Such internationally known companies as DuPont, Atlas, Hercules, Chrysler, General Motors, General Foods, National Cash Register, Getty Oil and Litton are a part of the state's industrial complex.

Agriculture is also one of Delaware's most important industries. In addition to dairy products and truck crops, the state is famous for its Delmarvalous chickens. Sussex County, with approximately 110 million broilers per year, is the leading broiler producing county in the nation.

Delawareans are equally proud of their distinguished heritage. Swedish colonists, under Peter Minuit, established the first permanent settlement in 1638 on a site now a part of Wilmington. The Dutch founded New Castle shortly thereafter and the state was under Dutch or Swedish rule until the British took possession. In 1681, the state was deeded to William Penn who, in 1682, first landed in America at New Castle.

Delaware became "The First State" when, on December 7, 1787, it became the first of the original colonies to ratify the Constitution. Delaware statesmen have long played a vital role in the progress of the United States. George Washington and Lafayette are among the colorful historic figures who frequently visited the state.

Delaware is the second smallest state with an area of 2,057 square miles and the fifth smallest in population with 446,292 people (1960 census). However, Delaware boasts one of the highest per capita incomes in the nation. The state colors are colonial blue and buff; state flower, the peach blossom; state tree, the American holly; and state bird, the Blue Hen chicken. The state is named after Lord De La Ware, an early governor of Virginia.

As you travel through Delaware, we hope you will enjoy our fine recreational areas and historic sites. The many wonders of Delaware are truly worth discovering.

NEW CASTLE COUNTY

- ◆ 1 BRANDYWINE CREEK STATE PARK. Delaware's newest state park is ideal for nature study. On Route 100 north of Wilmington. Park open: May-October.
- ◆ 2 THE HENRY FRANCIS DU PONT WINTER-THUR MUSEUM. More than 100 period rooms covering American domestic scenes 1640-1840. Ten rooms open without appointment; other tours by appointment only. Five miles north of Wilmington on Route 52. Open: Tuesday-Saturday, 9:30 a.m.-4 p.m. Admission: 50c for adults; 25c for children under 16. Tours: \$1.25 and \$2.50.
- ◆ 3 HAGLEY MUSEUM. Located in the old Du Pont Powder Yards on Brandywine Creek. Three miles north of Wilmington (via Route 141). Open: Tuesday-Saturday, 9:30 a.m.-4:30 p.m.; Sunday, 1-5 p.m.
- ◆ 4 DELAWARE ART CENTER. Permanent collection and traveling exhibits. Kentmere Parkway, Wilmington. Open: Daily, 10 a.m.-5 p.m.; Sunday, 2-6 p.m.
- ◆ 5 BRANDYWINE SPRINGS STATE PARK. Popular recreational area for over 160 years. Picnicking. Four miles west of Wilmington on Route 41. Open: May-October. Saturdays, Sundays, and holidays, 1-5 p.m. \$1.25 for adults; 50c for children.
- ◆ 6 WILMINGTON AND WESTERN RAILROAD. Chug through scenic Red Clay Valley on old steam train. Four miles west of Wilmington on Route 41. Open: May-October. Saturdays, Sundays, and holidays, 1-5 p.m. \$1.25 for adults; 50c for children.
- ◆ 7 OLD TOWN HALL, Wilmington. Built in 1798 on land given by John Dickinson. Market Street near Sixth. Open: Monday, 1-9 p.m.; Tuesday-Friday, 10 a.m.-5 p.m.
- ◆ 8 FORT CHRISTINA MONUMENT. Site of first permanent settlement in Delaware in 1638. At foot of Seventh Street, Wilmington. Open: Daily, 9 a.m.-5 p.m.
- ◆ 9 OLD SWEDES CHURCH. Built in 1698. East Seventh Street, Wilmington. Open: Tuesday-Sunday, noon-4 p.m. Guide service.
- ◆ 10 OLD COURT HOUSE, New Castle. Delaware's colonial capital and the county seat for many years. Open: Monday-Saturday, 11 a.m.-4 p.m.; Sunday, noon-4 p.m.
- ◆ 11 COOCH'S BRIDGE. In 1777 was scene of only battle of Revolutionary War fought in Delaware. South of Newark off Route 896.

- ◆ 11 BUENA VISTA. Built in 1847, once home of John M. Clayton, President Zachary Taylor's Secretary of State, and the late Governor C. Douglass Buck. Eight miles south of Wilmington on U. S. 13. Open: Tuesday-Saturday, 10 a.m.-5 p.m.; Sunday, 2-5 p.m.
- ◆ 12 FORT DELAWARE STATE PARK. Located on Pea Patch Island in Delaware River. Completed in 1859, served as prison for Confederate soldiers during Civil War. Park open: Memorial Day to Sunday after Labor Day. Boats from Delaware City on Saturdays, Sundays, and holidays; noon-7 p.m.; \$1 for adults, 50c for children 14 and under.
- ◆ 13 LUMS POND STATE PARK. Ideal for swimming, boating, picnicking. On Route 896 south of Wilmington. Park open: May-October.
- ◆ 14 THE CORBIT-SHARP HOUSE. Beautiful example of Georgian architecture built in 1772. Odessa. Open: Tuesday-Saturday, 10 a.m.-5 p.m.; Sunday, 2-5 p.m. Admission: \$1 for adults; 25c for children under 16.
- ◆ 14 DAVID WILSON MANSION. Restoration of original 1740 house. Odessa. Open: Tuesday-Saturday, 10 a.m.-5 p.m.; Sunday, 2-5 p.m. Admission: 75c for adults; 25c for children under 16.

KENT COUNTY

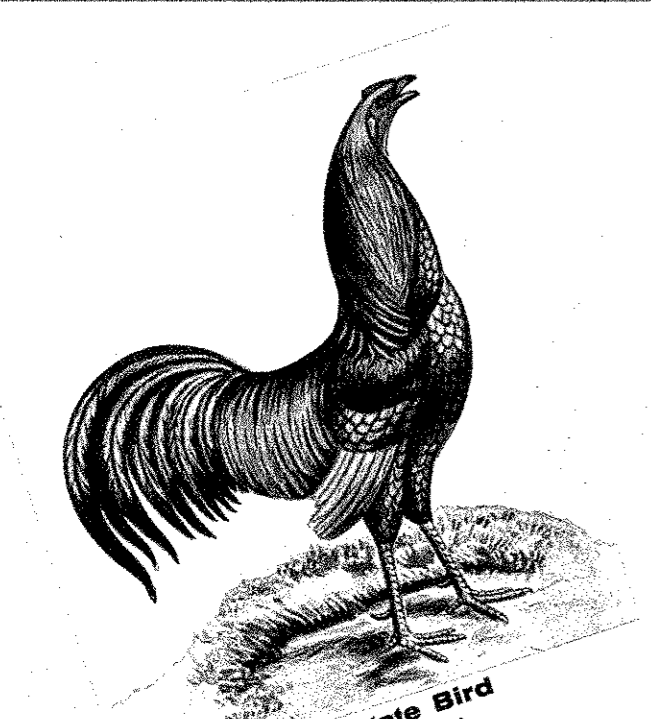
- ◆ 15 THE LINDENS. Erected 1765, typical of a miller's home of the late colonial era. Smyrna. Open: Daily 11 a.m.-5 p.m.
- ◆ 16 OLD STATE HOUSE. Built in 1792, the second oldest state house still in administrative use. Delaware became "First State" to ratify federal Constitution here in 1787. The Green, Dover. Open: Monday-Friday, 8:30 a.m.-4:30 p.m.
- ◆ 16 LEGISLATIVE HALL. Completed in 1933, houses the General Assembly, offices of the Governor, Lieutenant Governor, and Secretary of State. Portraits of military heroes on display. Legislative Avenue, Dover. Open: Monday-Friday, 8:30 a.m.-4:30 p.m.
- ◆ 16 HALL OF RECORDS. Public archives of state housed here, including original royal grant from Charles II to James, Duke of York. Legislative Avenue, Dover. Open: Monday-Friday, 8:30 a.m.-4:30 p.m.
- ◆ 16 CHRIST CHURCH. Built in 1734. Caesar Rodney, a signer of the Declaration of Independence, is buried in churchyard. Water Street, Dover.
- ◆ 16 DELAWARE STATE MUSEUM. Exhibits on many phases of Delaware life. Swedish type log house

- is an outstanding feature. Governors Avenue, Dover. Open: Tuesday-Saturday, 11 a.m.-5 p.m.; Sunday, 2-5 p.m.
- ◆ 16 GOVERNOR'S HOUSE. Built about 1790, once a station of the "underground railroad" of pre-Civil War days. Kings Highway, Dover. Open: Tuesdays, 2-5 p.m.
- ◆ 17 JOHN DICKINSON MANSION. Home of the "Penman of the Revolution." Off U. S. 119 on Kitts Hummock Road, Dover. Open: Tuesday-Saturday, 10 a.m.-5 p.m.; Sunday, 1-5 p.m.
- ◆ 18 BARRATT'S CHAPEL. Erected in 1780, known as "The Cradle of Methodism in America." One mile north of Frederica on U. S. 113.
- ◆ 19 KILLENS POND STATE PARK. Quiet site for swimming, boating, and sailing. Off U. S. 13 south of Felton. Park open: May-October.
- ◆ 20 PARSON THORNE MANSION. Built around 1740, once the home of the Rev. Parson Thorne, Milford's founder, and childhood home of Delaware statesman John M. Clayton. Milford. Open: By appointment only. Call 422-4317.

SUSSEX COUNTY

- ◆ 21 ZWAANNENDAEI MUSEUM. Erected in 1931 to commemorate first settlement in Delaware by Dutch in 1631. Lewes. Open: Tuesday-Saturday, 10 a.m.-5:30 p.m.; Sunday, 12:30-5:30 p.m.
- ◆ 21 1812 MEMORIAL PARK. Park facing Lewes-Rehoboth Canal commemorates bombardment and defense of Lewes during War of 1812. Lewes.
- ◆ 22 CAPE HENLOPEN STATE PARK. Rare plants thrive in this sandy hook of land marking the entrance to Delaware Bay. East of Lewes. Park open: May-October.
- ◆ 23 DELAWARE SEASHORE STATE PARK. Recreational paradise along Atlantic coast. Swimming, boating, fishing, surfing, camping. South of Rehoboth Beach on Route 14.
- ◆ 24 HOLTS LANDING STATE PARK. Public launching ramp provides access to Indian River Bay. North of Millville off Route 26. Park open: May-October.
- ◆ 25 TRAP POND STATE PARK. Ideal for swimming and boating. Nearby Trussell Pond contains northern-most natural stand of cypress trees in U. S. Off Route 24 near Laurel. Park open: May-October.
- ◆ 26 MASON-DIXON MONUMENT. Double cross-stone erected in 1768 by Charles Mason and Jeremiah Dixon as southern end of north-south portion of Mason-Dixon boundary. West of Delmar.

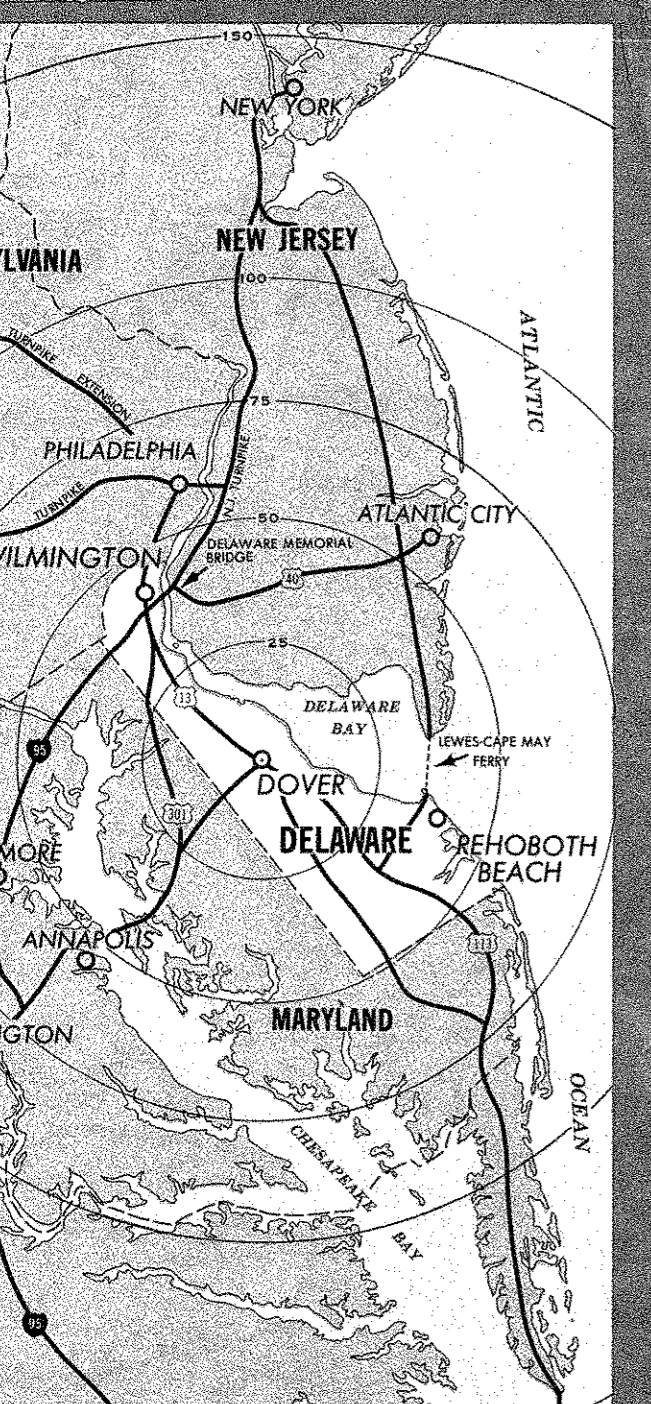
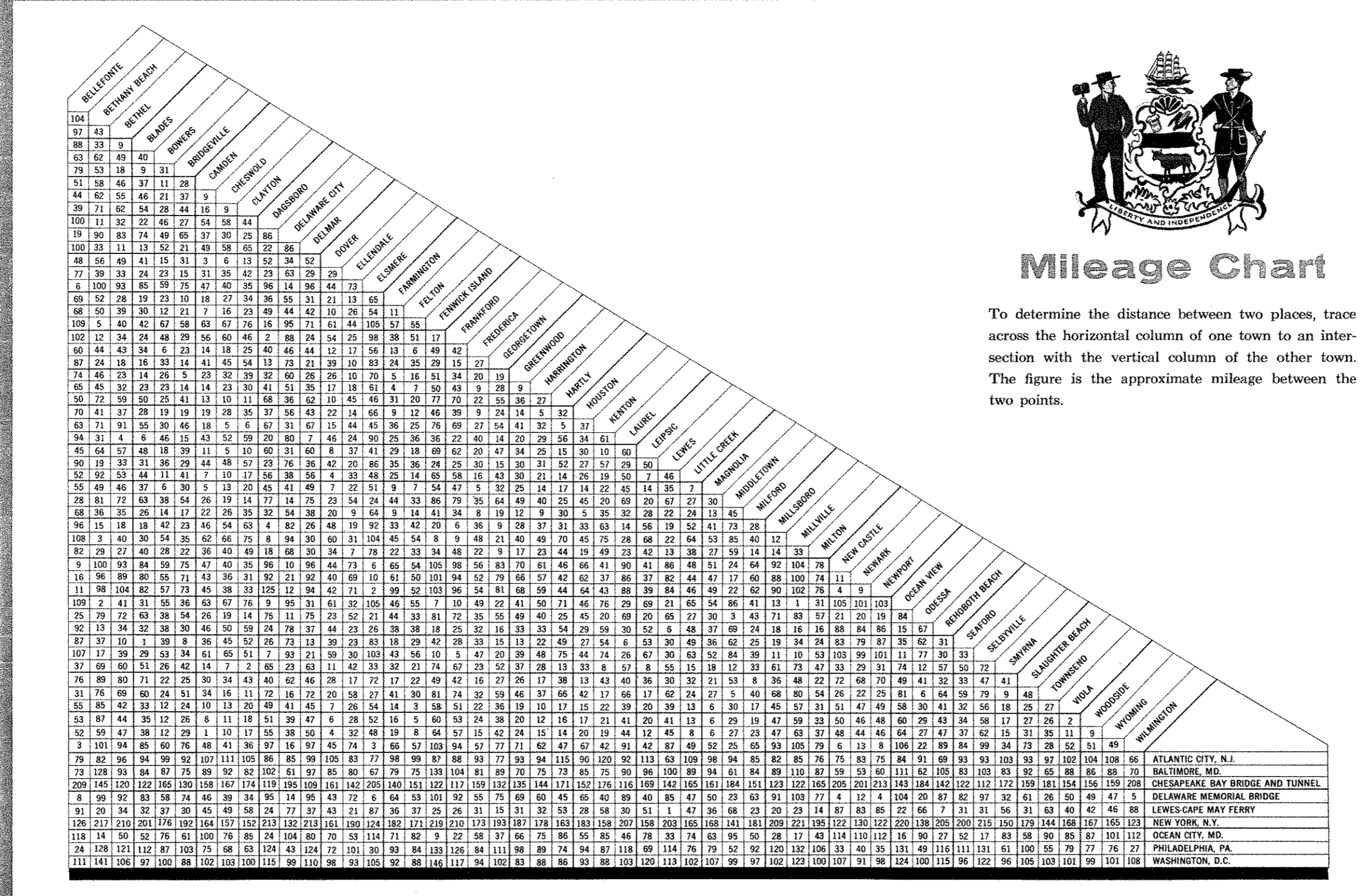
◆ 9 - Shows Location of Each Point of Interest on Map Side



The State Bird (Blue Hen Chickens)



The State Flower (Peach Blossoms)



Safety First in the First State

The Delaware State Police are striving continually to make Delaware highways safer for the motorist and pedestrian. Your support and cooperation, by complying with all traffic laws and regulations, will help us be successful.

It is the wish of the Delaware State Police that your visit to Delaware be safe and enjoyable. Our Troopers are courteous and you will find them willing to furnish you information and assistance at any time.

Speed limits are as posted except where special hazards exist by reason of weather, road, or traffic conditions. Towed vehicles are restricted to 45 MPH. Enforcement by unmarked patrol cars, radar, and aircraft.

State Police Headquarters
Dover U. S. No. 13, N. of Dover 734-5973

State Police Troop Locations

- Penny Hill U. S. 13, N. of Wilm. 764-2192
- State Road U. S. 13, S. of Wilm. 328-7503
- Newark, Del. Rt. 2, E. of Wilm. 998-2212
- Dover U. S. 13, N. of Dover. 734-5756
- Georgetown U. S. 113, N. of Georgetown. 856-2534
- Dewey Beach, Del. Rt. 14, Dewey B. 227-7733
- Bridgeville U. S. 13, N. of Bridgeville. 337-8251
- Turnpike and Freeway Patrol 738-3111

WELCOME TO THE FIRST STATE

We in Delaware think it's something special, a state that embodies all that has made this nation and its people great. We are a cross-section of America, with ocean beaches and rich farmland and bustling urban areas.

We invite you to Discover Wonderful Delaware and enjoy it as we do.

Have a pleasant visit, and please drive carefully.

Sincerely,
Russell W. Peterson
Governor of Delaware

DELAWARE STATE HIGHWAY DEPARTMENT
DOVER, DELAWARE

CHARLES S. ELLER, Chairman
GEORGE M. NELSON, Vice-Chairman

Thurman Adams, Jr. Bernard B. Isaacson
Frances DeDominis Ernest E. Killen
William J. Francis William R. Murray
Lemuel H. Hickman Elmer Pratt

Walker L. Wheatley
Ernest A. Davidson, Director of Operations
Joe S. Robinson, Chief Engineer
James J. Deputy, Controller
Charles G. Lamb, Supt. State Police
Russell W. Whiteley, Motor Vehicle Comm.

FOR FREE DISTRIBUTION ONLY
Printed in U.S.A.

DELAWARE HIGHWAYS

Discover Wonderful Delaware

1969 Official Highway Map