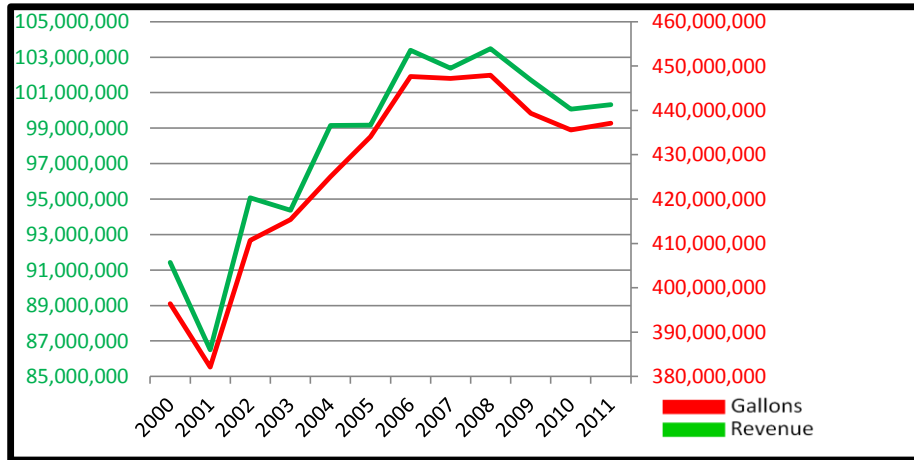


HIGHWAY STATISTICS

The following table and graphics show gasoline consumption and the state revenue collected from gasoline sales in the state from FY2000 to FY2011 (July 1-June 30).

FY	GALLONS	% BASE	%/ANN	REVENUE	% BASE	%/ANN
2000	396,439,626	BASE		\$91,426,164	BASE	
2001	382,107,442	-3.62%	-3.62%	\$86,497,377	-5.39%	-5.39%
2002	410,727,263	3.60%	7.49%	\$95,064,201	3.98%	9.90%
2003	415,364,330	4.77%	1.13%	\$94,365,047	3.21%	-0.74%
2004	425,075,277	7.22%	2.34%	\$99,145,271	8.44%	5.07%
2005	434,107,363	9.50%	2.12%	\$99,162,587	8.46%	0.02%
2006	447,641,622	12.92%	3.12%	\$103,394,033	13.09%	4.27%
2007	447,204,018	12.81%	-0.10%	\$102,382,062	11.98%	-0.98%
2008	447,962,052	13.00%	0.17%	\$103,471,297	13.17%	1.06%
2009	439,342,813	10.82%	-1.92%	\$101,714,025	11.25%	-1.07%
2010	435,610,439	9.88%	-0.85%	\$100,074,273	9.46%	-1.61%
2011	437,092,584	10.25%	0.34%	\$100,328,232	9.74%	0.25%

Source: Alexis Bryan, Fiscal Administrative Officer, DelDOT/DMV



With the increased volatility of fuel price during FYs 2006 through 2011, the consumption and the revenue remained relatively flat. Delaware had no change in Motor fuel taxes.