

Office of the Secretary

Jennifer L. Cohan
Secretary

Lesley Devine
Executive Secretary
760-2303

Darlene Cox
Administrative Assistant
760-2202

Pam Lilly
Community Outreach
Coordinator
760-2118

Nicole Majeski
Deputy Secretary
760-2715

Vacant
Legislative Liaison
760-2080

C.R. McLeod
Director,
Public Relations
760-2080

Wendy Henry
Civil Rights Administrator
760-2555

Scott Vien
Director,
Motor Vehicles
744-2541

John Sisson
Chief Executive Officer,
Delaware Transit Corporation
576-6100

PJ Henry
Manager, Audit
760-2059

Robert B. McCleary
Chief Engineer,
Director
760-2305

Drew Boyce
Director,
Planning
760-2276

Mark Alexander
Director,
Maintenance & Operations
760-2201

Lanie Thornton
Director
Finance
760-2700

Li Wen Lin
Director,
Technology & Innovation
760-2203

Kim Nowacki
Director,
Human Resources
760-4831

Delaware Transit Corporation

John Sisson
Chief Executive Officer

Denise Von Steuben
Executive Assistant
576-6081

Edward Taylor
Chief Financial Officer
576-6110

Richard Paprcka
Chief Operating Officer
576-6050

Diana Farrell
Chief Human Resources
Officer
576-6087

Julie Theyerl
Marketing and Public Affairs
Officer
576-6005

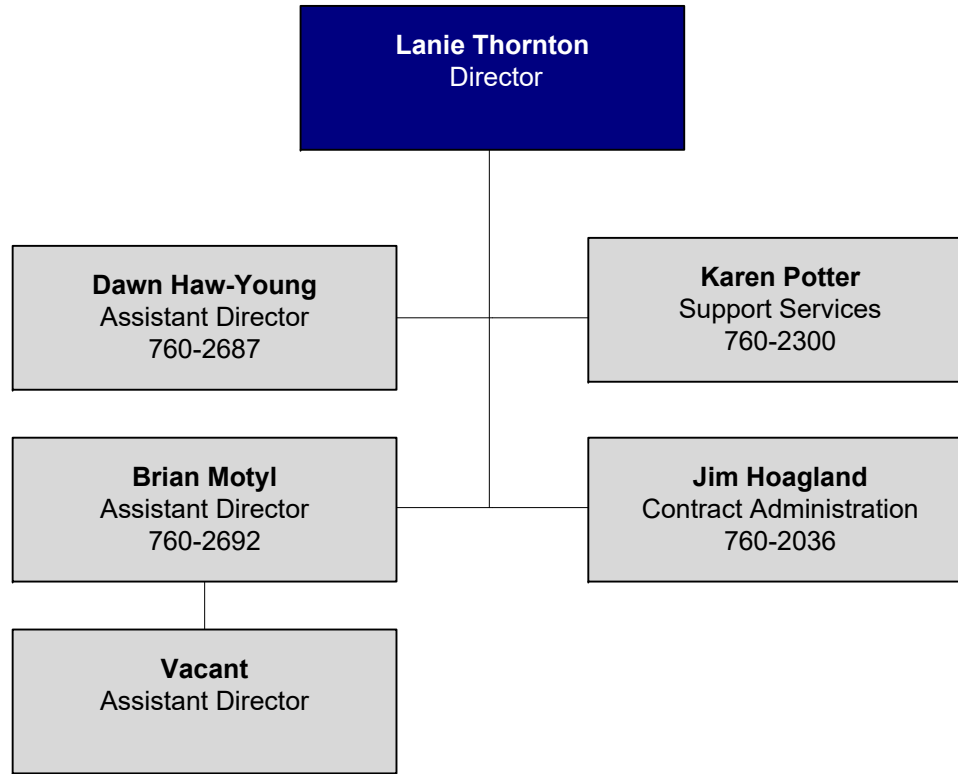
Bonita Hitch
Director of Civil Rights, EEO
Officer & DBE Liaison Officer
760-2089

Wayne Henderson
Chief Technology Officer
576-6063

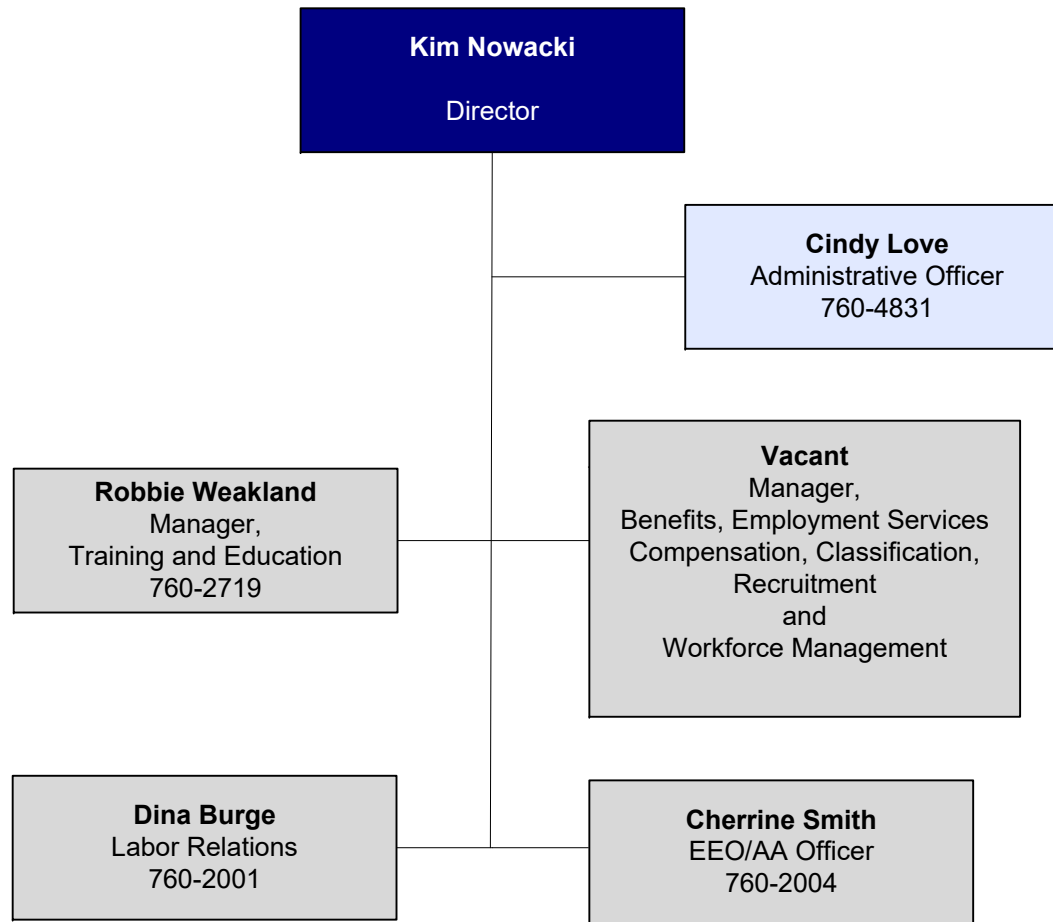
John Dezio
Chief Rail and Planning
Officer
576-6040

Raymond Petrucci
Performance & Budget
Analyst
576-6030

Finance



Human Resources



Maintenance and Operations

Mark Alexander
Director

Terri Stoakley
Administrative Specialist
760-2733

South District
Alastair Probert
Assistant Director
853-1300

Central District
Tom Greve
Assistant Director
760-2429

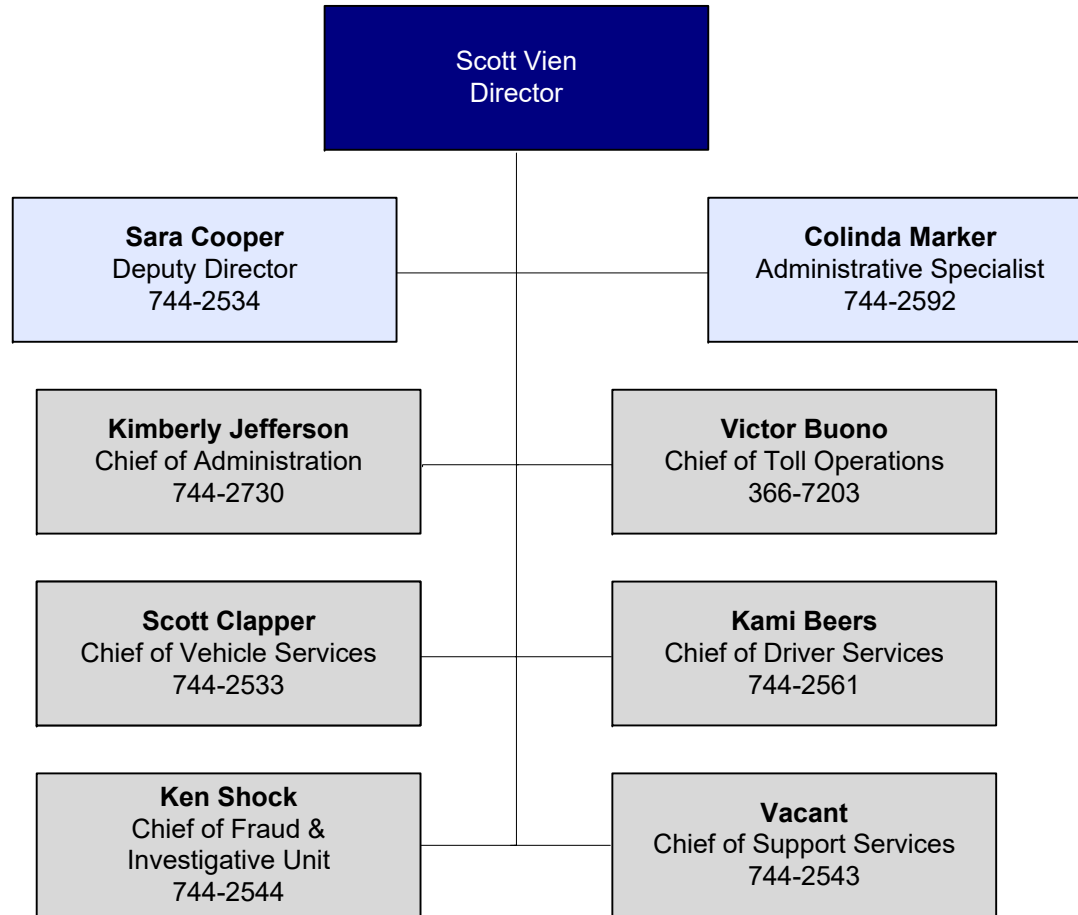
Canal District
Kevin Canning
Assistant Director
326-4460

North District
Don Weber
Assistant Director
894-6300

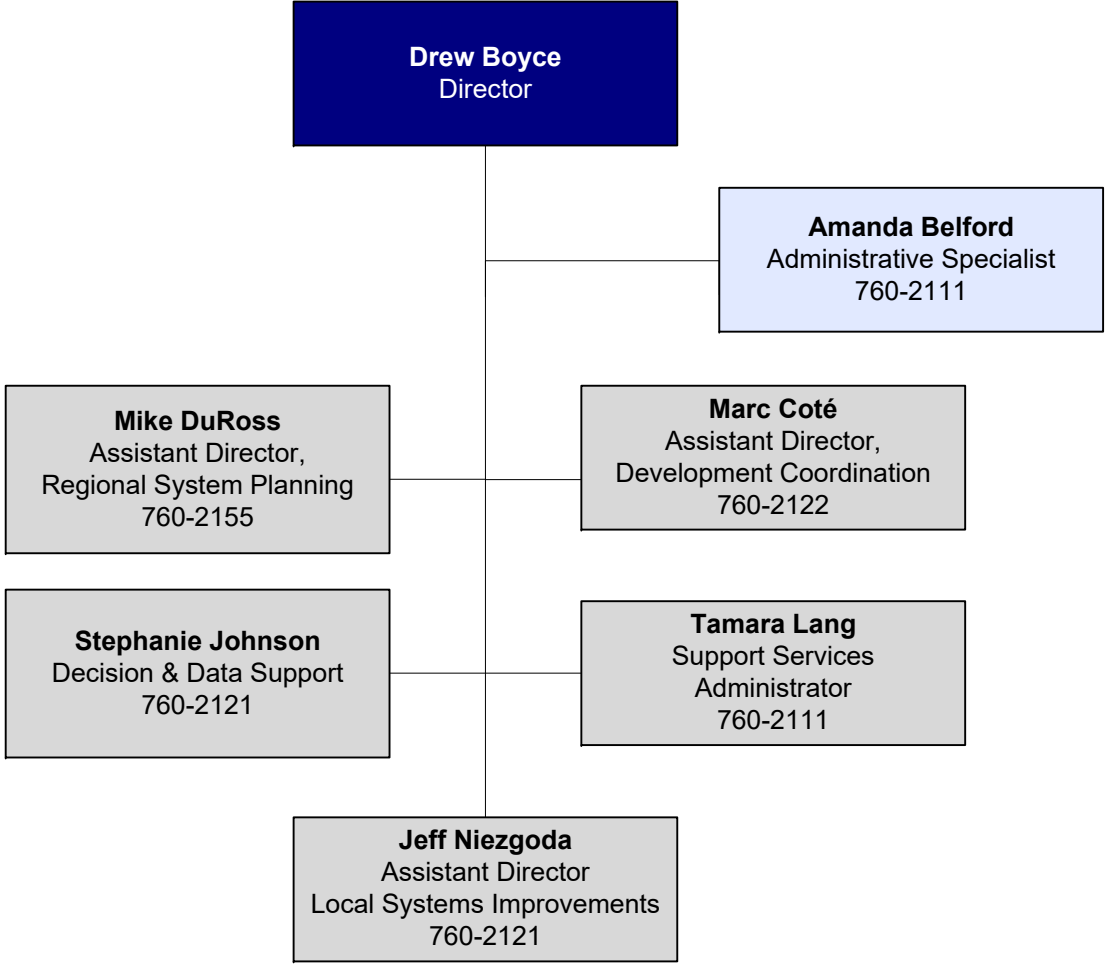
Statewide Support Services
Brian Urbanek
Assistant Director
760-2201

Business Management
Anne Brown
Chief of Administration
760-2088

Motor Vehicles



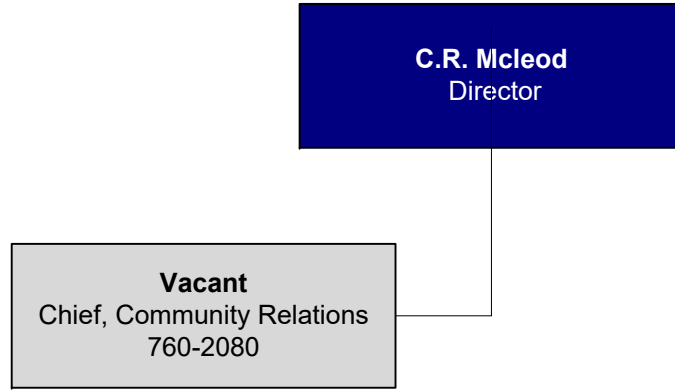
Planning



Community Relations

C.R. Mcleod
Director

Vacant
Chief, Community Relations
760-2080



Transportation Solutions

Robert B. McCleary
Chief Engineer,
Director

Shanté Hastings
Deputy Director
760-2835

Linda Short
Executive Secretary
760-2305

Mark Tudor
Assistant Director,
Project Development, North
760-2371

Mark Luszc
Assistant Director,
Traffic
659-4060

Mike Simmons
Assistant Director,
Project Development, South
760-2370

Barry Benton
Assistant Director,
Bridge
760-2299

Jim Pappas
Assistant Director,
Performance Management
760-2379

Javier Torrijos
Assistant Director,
Construction
760-2132

David Nicol
Assistant Director,
Engineering Support
760-2298

Robert Cunningham
Chief,
Right of Way
760-2228

Technology and Innovation

