

Office of the Secretary

Carolann Wicks
Secretary of Transportation
760-2303

Pam Watkins
Executive Secretary
760-2303

Natalie Barnhart
Chief Engineer/Director,
Transportation Solutions
760-2204

Keesha Wilson
Executive Assistant
760-2202

Ralph A. Reeb
Director,
Planning
760-2111

Mary Beth Gzym
Director,
Human Resources
760-4831

Stephen Kingsberry
Executive Director,
Delaware Transit Corporation
760-2833

Joe Wright
Director,
Maintenance & Operations
760-2201

Jennifer L. Cohan
Director,
Motor Vehicles
744-2541

Kathy English
Director,
Finance
760-2700

Brett Taylor
Legislative and Financial
Policy Advisor
760-2492

Marti Dobson
Director,
Technology & Support Svcs.
760-2203

Delaware Transit Corporation

Stephen Kingsberry
Executive Director

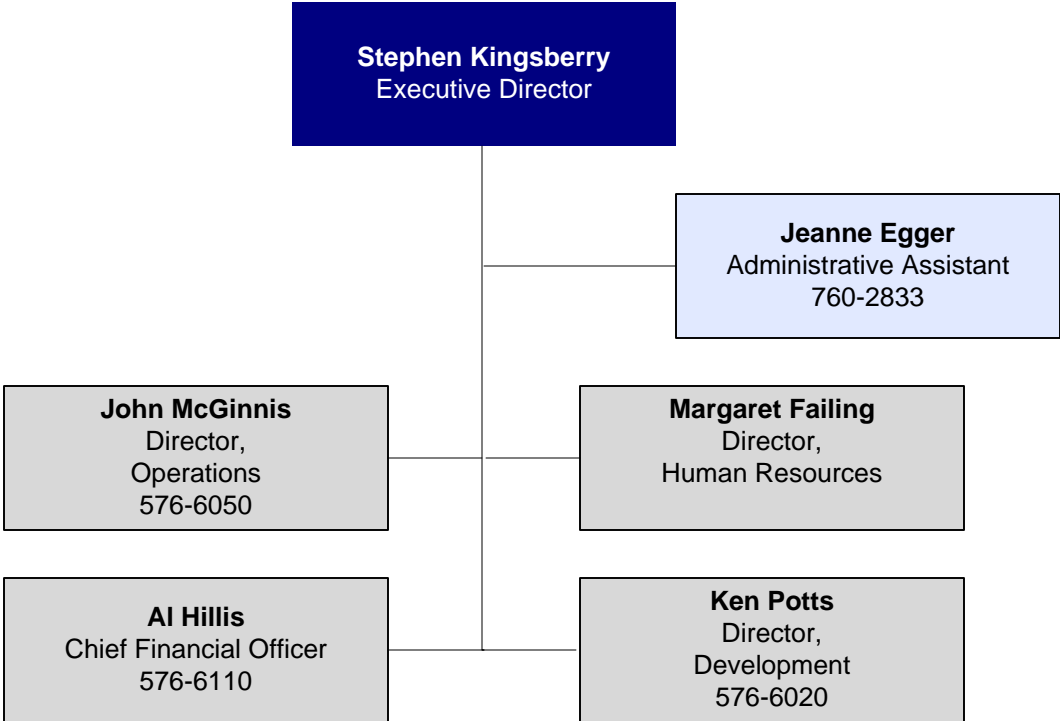
Jeanne Egger
Administrative Assistant
760-2833

John McGinnis
Director,
Operations
576-6050

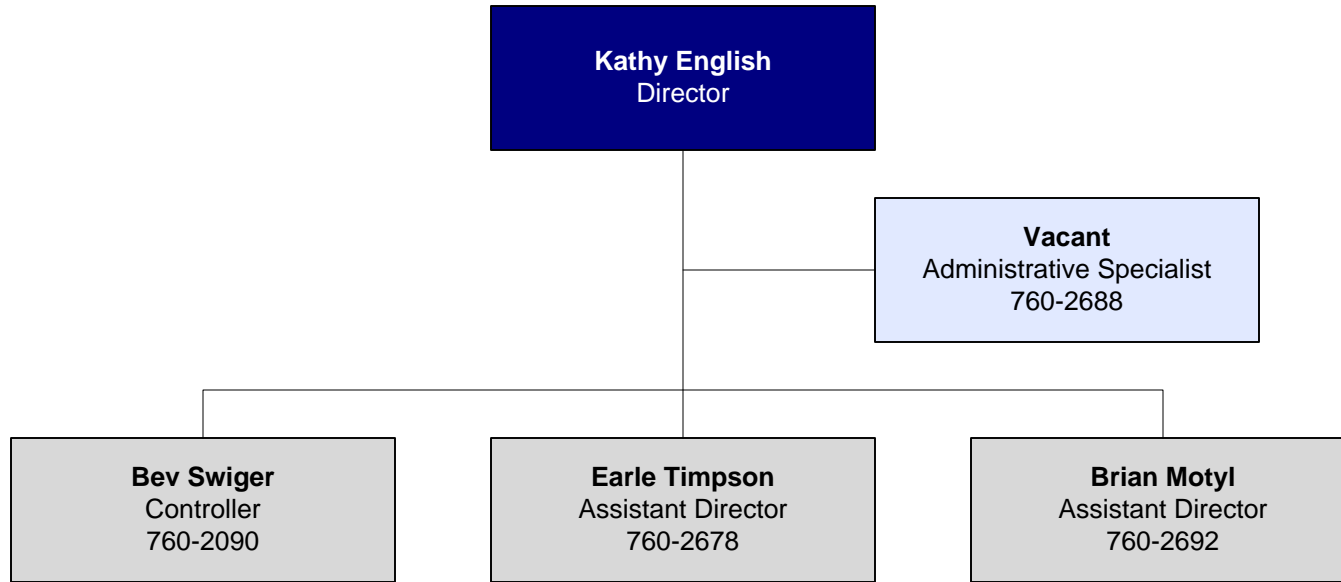
Margaret Failing
Director,
Human Resources

Al Hillis
Chief Financial Officer
576-6110

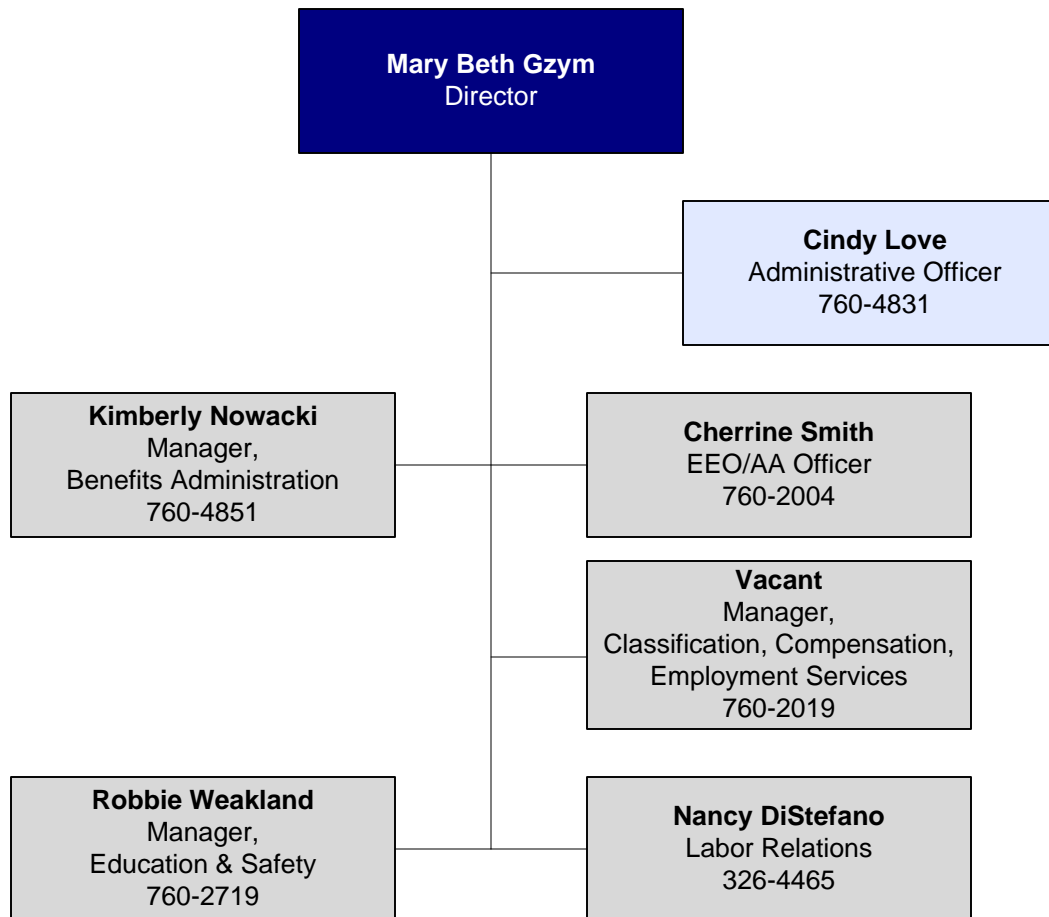
Ken Potts
Director,
Development
576-6020



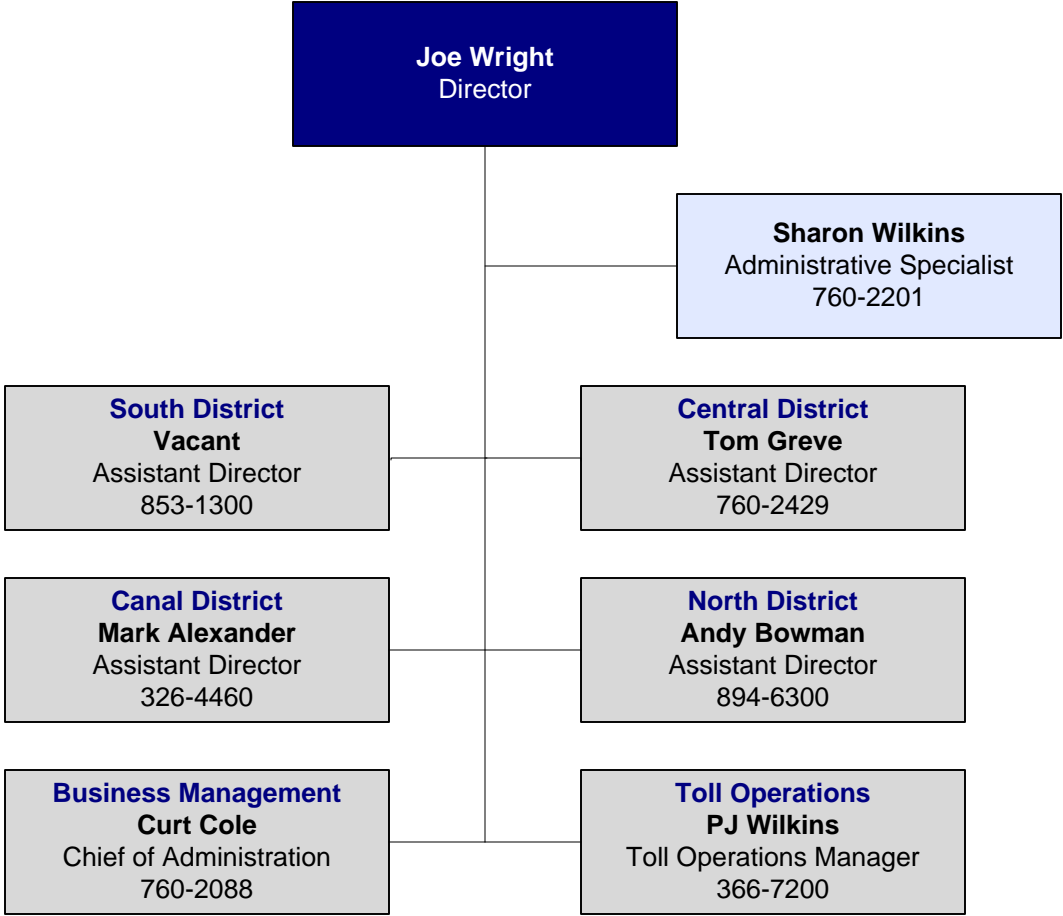
Finance



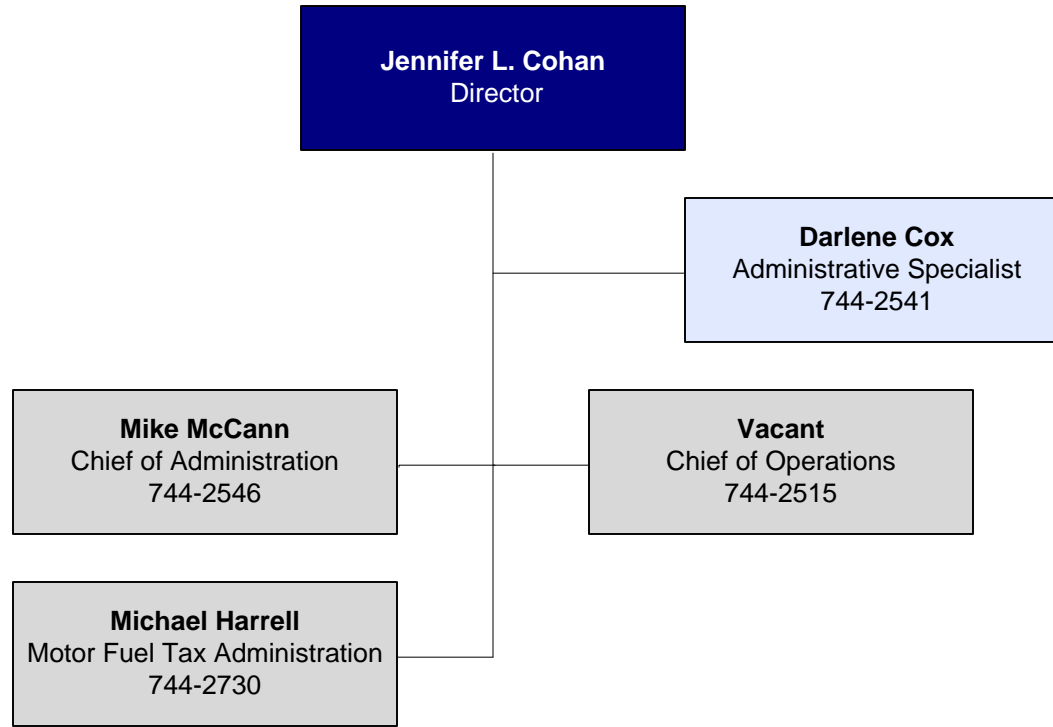
Human Resources



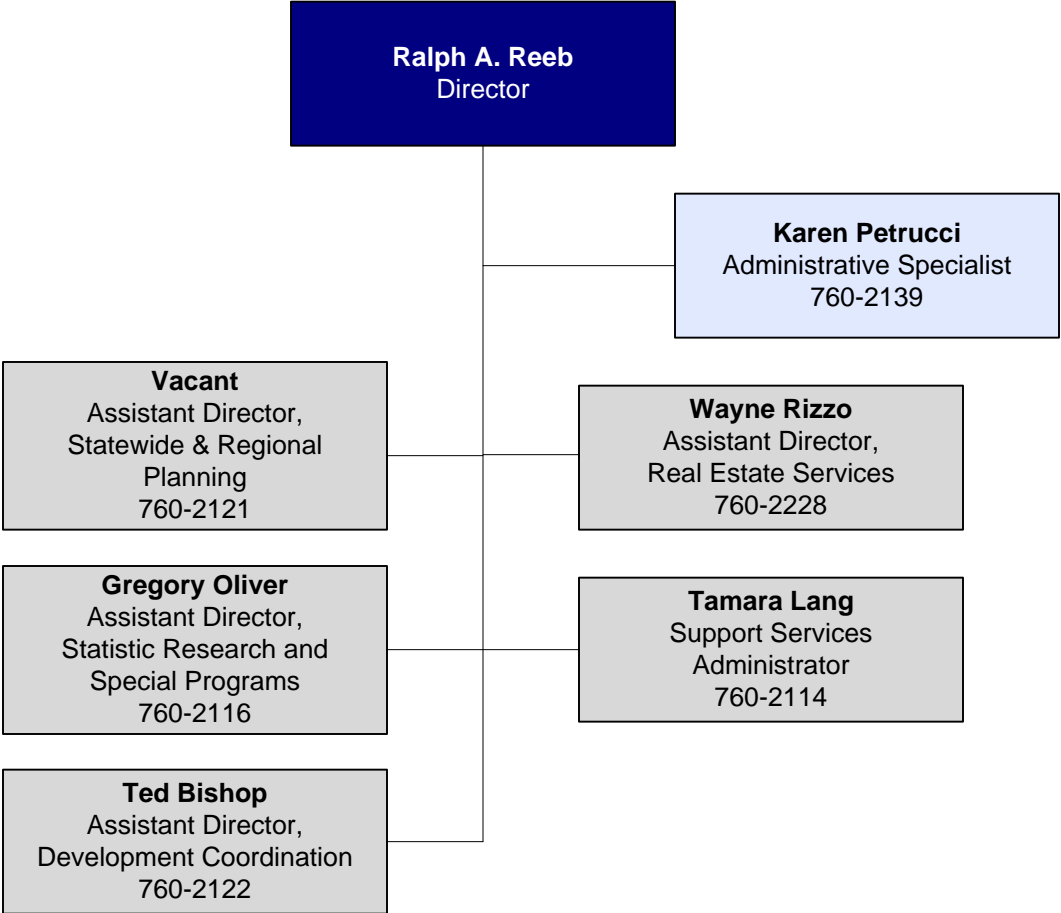
Maintenance and Operations



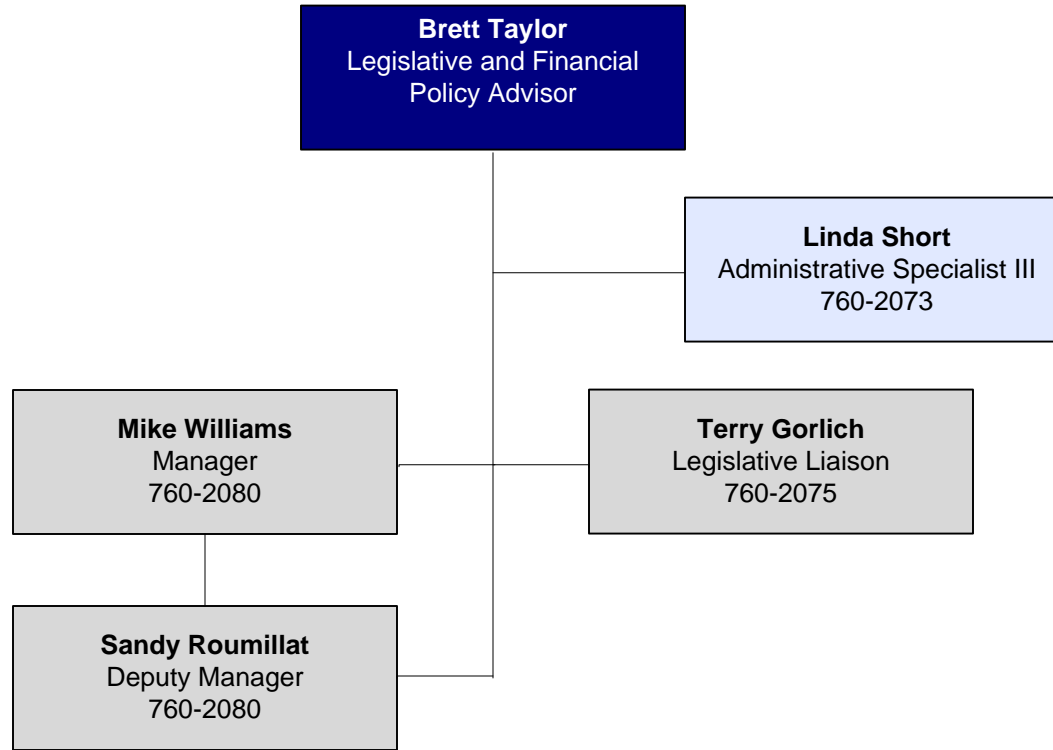
Motor Vehicles



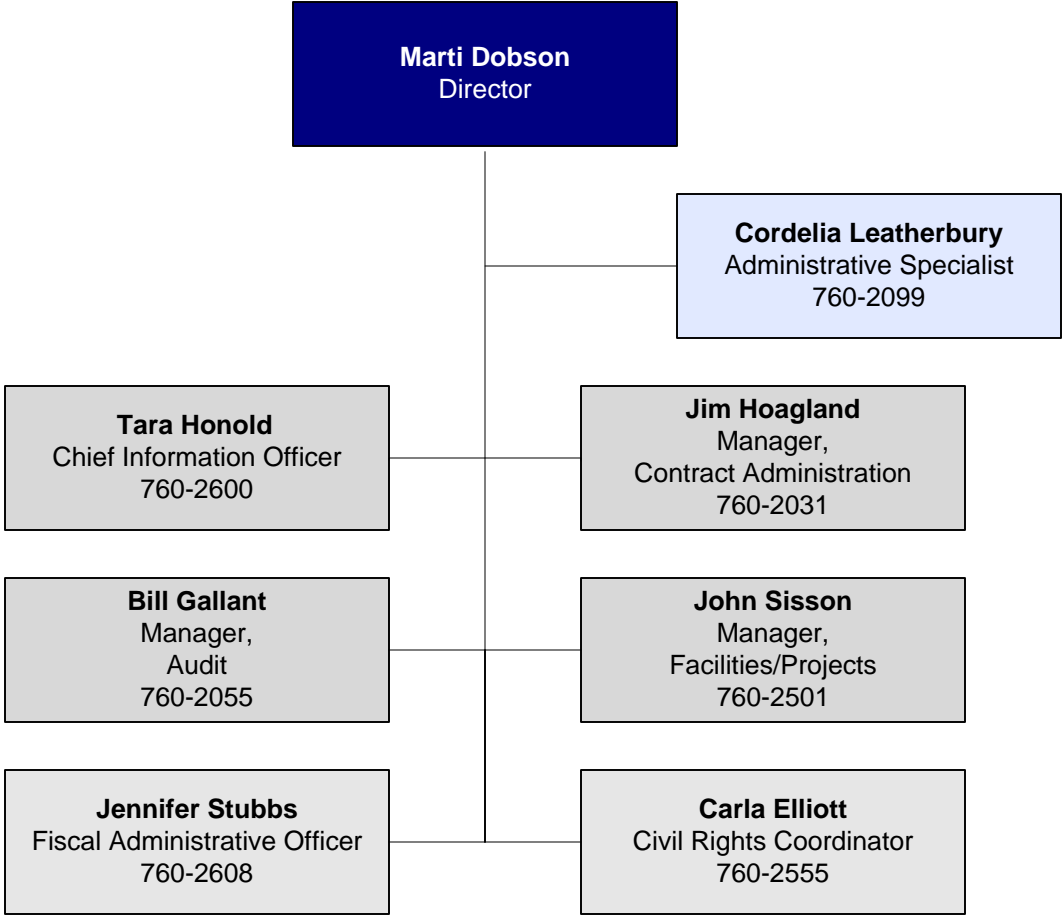
Planning



Public Relations



Technology and Support Services



Transportation Solutions

