

- LEGEND**
- PROPOSED PAVEMENT
  - PROPOSED DRAINAGE
  - PROPOSED CURB/SIDEWALK
  - PROPERTY LINES

**SR26 AREA IMPROVEMENTS**  
**DELDOT CONTRACT NO. T200411210**

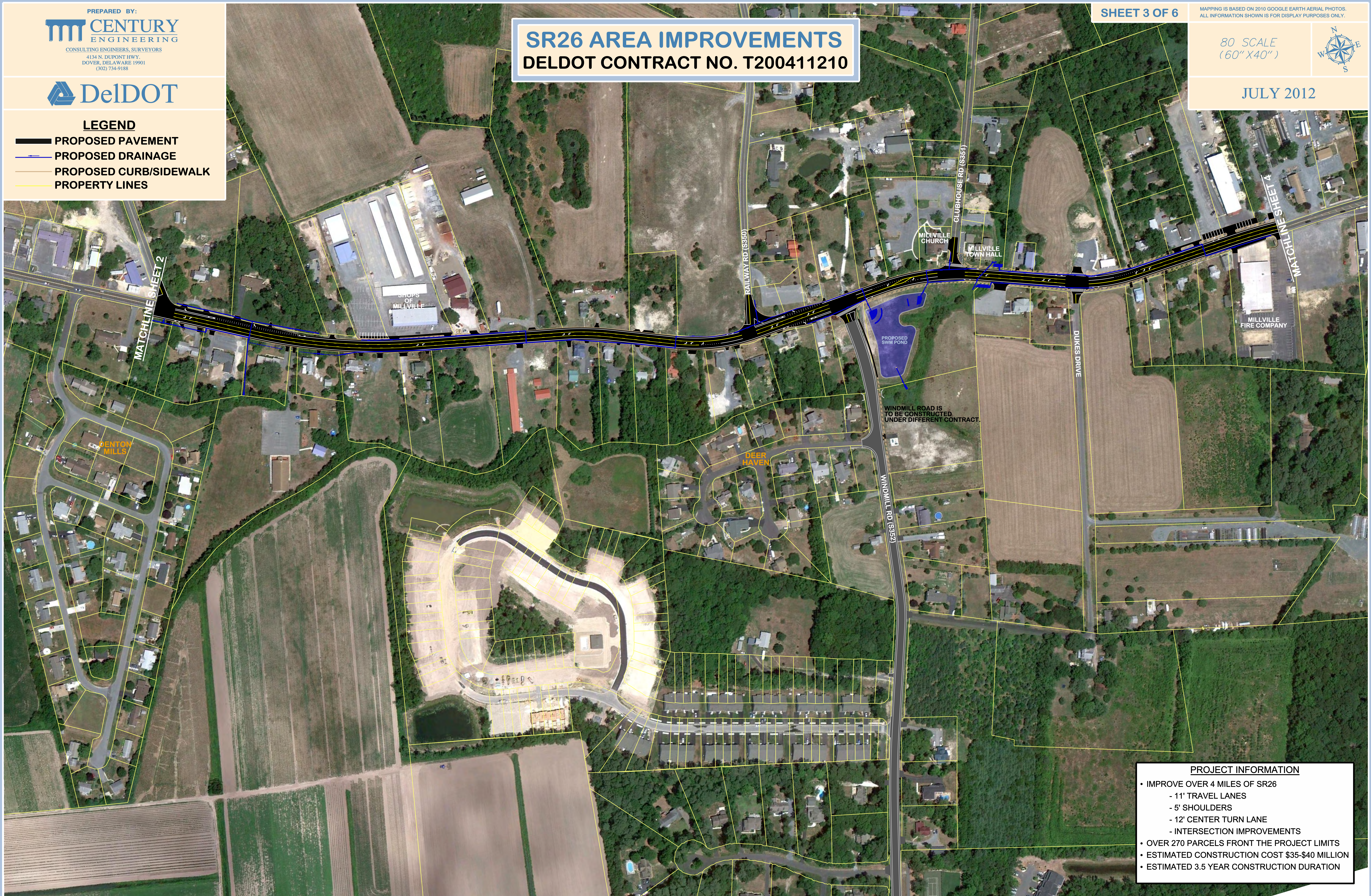
SHEET 3 OF 6

MAPPING IS BASED ON 2010 GOOGLE EARTH AERIAL PHOTOS.  
ALL INFORMATION SHOWN IS FOR DISPLAY PURPOSES ONLY.

80 SCALE  
(60" X 40")



JULY 2012



**PROJECT INFORMATION**

- IMPROVE OVER 4 MILES OF SR26
  - 11' TRAVEL LANES
  - 5' SHOULDERS
  - 12' CENTER TURN LANE
  - INTERSECTION IMPROVEMENTS
- OVER 270 PARCELS FRONT THE PROJECT LIMITS
- ESTIMATED CONSTRUCTION COST \$35-\$40 MILLION
- ESTIMATED 3.5 YEAR CONSTRUCTION DURATION