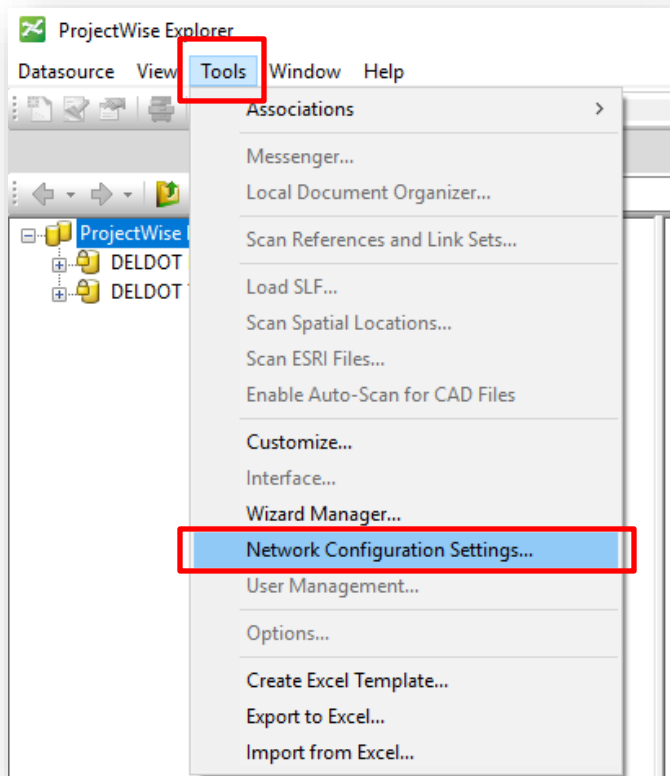




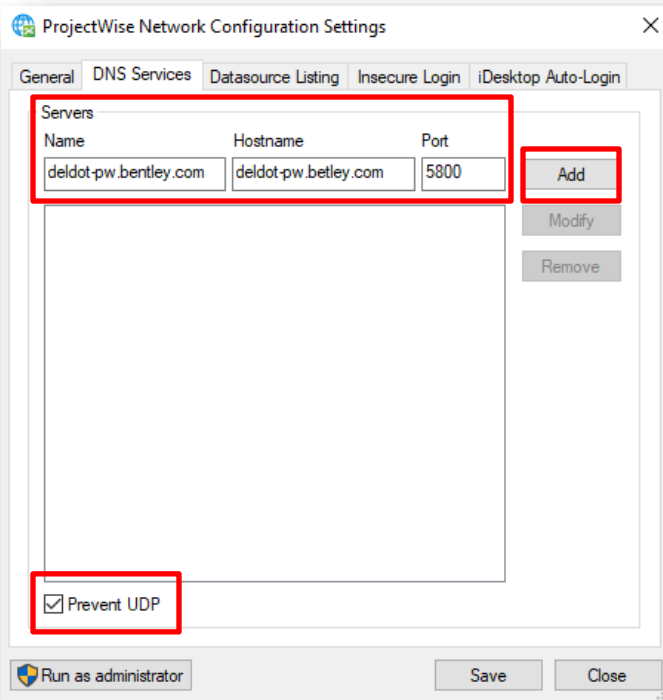
This document provides instructions for configuring Bentley ProjectWise Explorer software for use on Delaware Department of Transportation (DelDOT) projects. These instructions assume that the user has already installed the ProjectWise Explorer client software on their PC.

- 1) Launch ProjectWise Explorer.
- 2) Click on **Tools > Network Configuration Settings**.

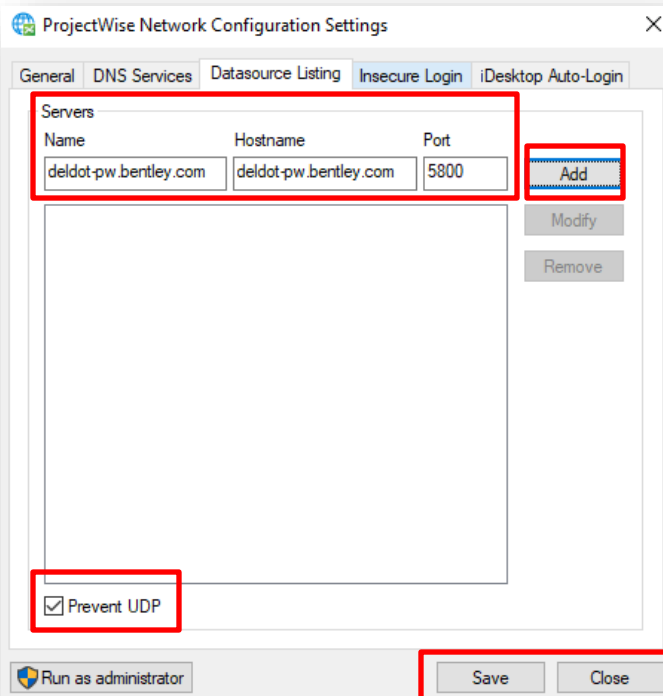


- 3) In the **ProjectWise Network Configuration Settings** dialog that appears, select the **DNS Services** tab and enter the following information into the appropriate fields. Ensure that the **Prevent UDP** box in the lower-left corner is toggled on. Select the **Add** button.

Server Name	Hostname	Port
deldot-pw.bentley.com	deldot-pw.bentley.com	5800

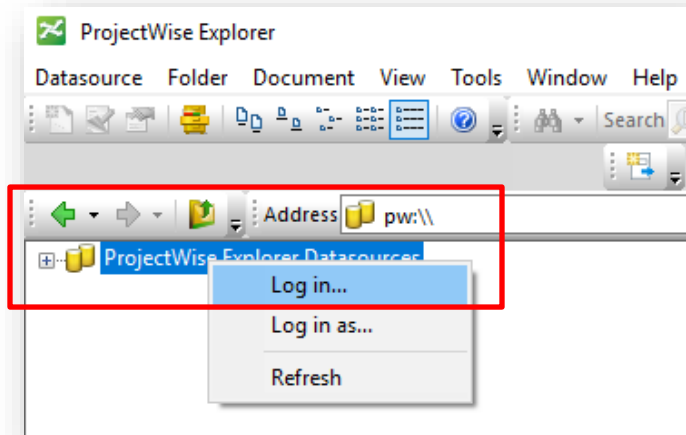


- 4) Select the **Datasource Listing** tab and repeat the same process listed in step 3, ensuring that the **Prevent UDP** box in the lower-left corner is toggled on for this dialog too. Select the **Add** button. Click the **Save** button, then the **Close** button to exit out of the **ProjectWise Network Configuration Settings** dialog.

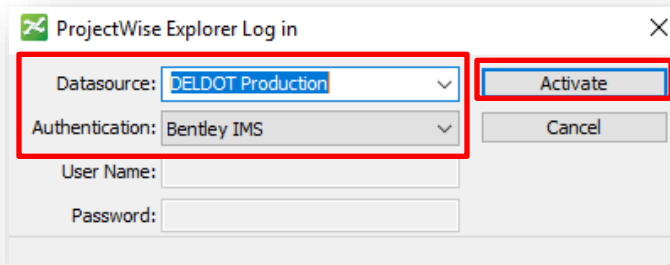




- 5) To access the **DeLDOT Production** datasource, right-click on the **ProjectWise Explorer Datasources** icon and select **Log in...**



- 6) Select the following items from the **ProjectWise Explorer Log in** dialog that appears.
- Datasource: **DELDOT Production**
 - Authentication: **Bentley IMS**
 - Select the **Activate** button.



Note: To utilize the Bentley IMS authentication method described above, the user should be logged into the Bentley Connection Client prior to logging into ProjectWise. If you are not logged into the Bentley Connection Client, you will be prompted to log in prior to gaining access to ProjectWise.

For external users, the Authentication method may differ. Please consult your IT Section for the appropriate authentication method(s). (Ex: ProjectWise/Single Sign-On)