

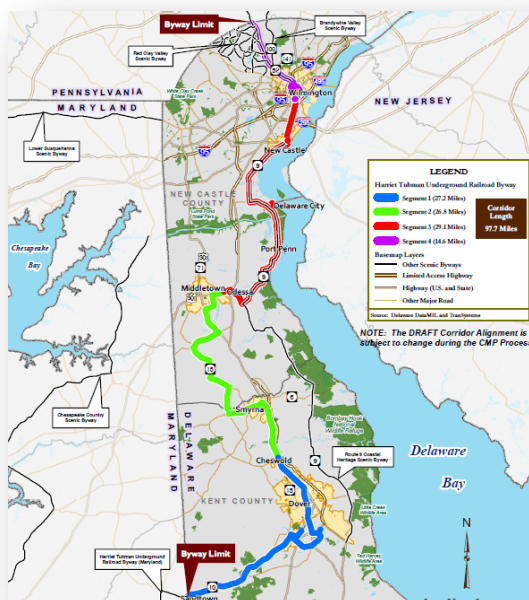
Executive Summary

Purpose of the Corridor Management Plan

The path on which thousands of slaves escaped to freedom before the Civil War, the Harriet Tubman Byway memorializes one of the most significant events in African American history and the American Civil Rights movement. The Harriet Tubman Underground Railroad Byway (HTURB) Corridor Management Plan (CMP) is intended to provide a collection of information that will assist in the preservation, promotion, interpretation, enhancement and management of the intrinsic resources found throughout the HTURB corridor. This CMP will attempt to foster economic development, continued research and set a clear course for future actions (projects) within the HTURB communities.

Location of the HTURB

(See Figure I for More Details)



The Corridor Story

Before the American Civil War, enslaved African Americans struggled to liberate themselves from bondage by fleeing their enslavers and the communities that denied them their liberty. Though enslaved people had been escaping from slavery for centuries before the Civil War, the network of people, places and modes of transportation aiding in their flight became known as the “Underground Railroad” [UGRR]. Delaware was a critical, but dangerous gauntlet to freedom. Harriet Tubman, one of the most famous Underground Railroad “conductors” in American history, traversed the landscapes found along this Byway throughout the 1850s during her daring rescue missions into Maryland to liberate her family.

What is the Harriet Tubman Underground Railroad Byway?

Inspired by the recorded movements and contacts made by Harriet Tubman in Delaware, the route includes sites and pathways associated with Harriet Tubman, as well as sites and

pathways associated with other documented Underground Railroad travelers and conductors. The Delaware route also highlights sites of abolitionist activities and legal actions, as well as landscapes that help modern travelers to envision the 19th century landscape through which these brave people moved.

Harriet Tubman Centennial (2013)

The year 2013 will mark the 100th anniversary of the passing of Harriet Tubman. Her life and legacy will be celebrated throughout the world and specifically along the HTURB in Delaware. The following list of short-term action items reflect the expected rise in related tourism along the Maryland and Delaware HTURB, and serve to assist in the rapid development of some simple, but effective programs to meet the anticipated tourism requests.

Short-Term (2012 – 2014) Priority Action Items

Section 10.0 of this CMP provides much greater detail regarding the Action Plan for short-term, long-term and on-going activities. This section will present a summary of the key short-term (0 to 2 years after CMP completion) action items that were outlined by the public and the HTURB Steering Committee during the development of this CMP (2010 through 2012). The short-term action items are proposed as priority actions to harness the 2013 Harriet Tubman Centennial events and opportunities.

1. Develop a Corridor Management Entity (CME) or similar Byway organization and associated Bylaws to provide leadership and direction for the Byway
2. Seek funding to continue hosting and updating the HTURB website (www.harriettubmandelaware.com)
3. Develop and promote walking tours along the Byway particularly in the communities of Camden, Dover, New Castle, Delaware City and Wilmington.
4. Coordinate and cross promote with the Maryland HTURB, National Park Service, the Underground Railroad Coalition and tourism agencies
5. Create promotional material (electronic and hard-copy) to promote and educate travelers and potential travelers about the HTURB
6. Develop bike trail educational and informational materials for the Industrial Tract Trail and others as prioritized or identified
7. Coordinate with Delaware Greenways and other Delaware Byway entities for promotional opportunities and event coordination
8. Develop and install Byway-related gateways, interpretive displays and wayfinding signs
9. Form a marketing and promotions committee
10. Support efforts to utilize and improve Brecknock Park for the benefit of the HTURB
11. Develop a Wayfinding and Interpretation Plan including a full sign inventory
12. Promote bus tours along the Byway
13. Continue to research and develop the corridor story and affiliated stories
14. Create a HTURB itinerary publication
15. Support the efforts of the historical organizations and groups along the Byway, such as the Camden Historical Society