

Delaware Pedestrian Council

Meeting #8



July 17, 2025

Delaware Pedestrian Council | Meeting #8



Delaware Pedestrian Council | Meeting #8

2025 Delaware Total Fatalities as of 07/17/25									
	2025	2024				2023			
	Year-to-date	Year-to-Date		Total		Year-to-Date		Total	
Fatalities	54	75	↓	-28%	130	81	↓	-33%	137
Delaware Residents	40	61	↓	-34%	110	62	↓	-35%	110
Person Types									
Vehicle Occupant	29	41	↓	-29%	65	59	↓	-51%	89
Pedestrian	15	15		0%	34	12	↑	+25%	28
Bicyclist	1	3	↓	-67%	5	2	↓	-50%	5
Motorcyclist	8	12	↓	-33%	21	8		0%	14
Other Person Type	1	4	↓	-75%	5	0	↑	+100%	1
Crash Types									
Curve Related	9	14	↓	-36%	23	16	↓	-44%	28
Roadway Departure	24	29	↓	-17%	42	43	↓	-44%	69
Intersection Related	15	28	↓	-46%	48	18	↓	-17%	37
Median Crossover	1	0	↑	+100%	0	6	↓	-83%	8
Wrong Way	2	2		0%	4	1	↑	+100%	1
Work Zone	4	4		0%	5	6	↓	-33%	9



Delaware Pedestrian Council | Meeting #8

Today's Agenda

1. Roll Call and Approval of Previous Minutes
2. Public Comment
3. Review Fatal Pedestrian Crashes in Previous Quarter
4. Traffic Calming Design Manual Overview
5. Subcommittee Updates
6. Council Budget
7. Agency Updates
8. Focus Areas for 2025 (FY26)
9. Discuss Next Meeting Date



Delaware Pedestrian Council | Meeting #8

1. Roll Call and Approval of Previous Meeting Minutes



Roll Call

Please say here when your name is announced.



Delaware Pedestrian Council | Meeting #8

2. Public Comment



Public Comment

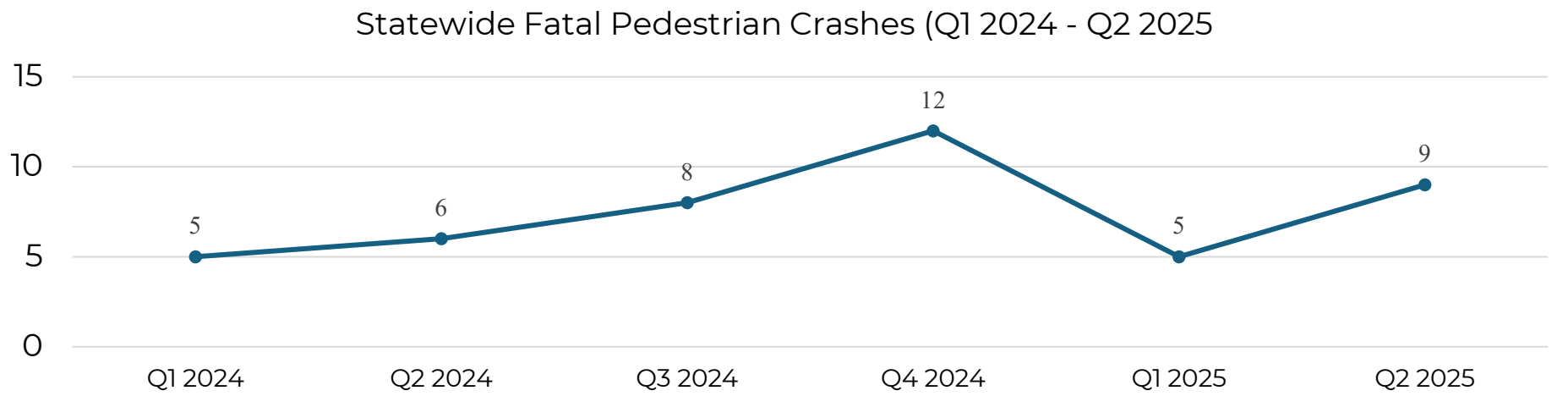
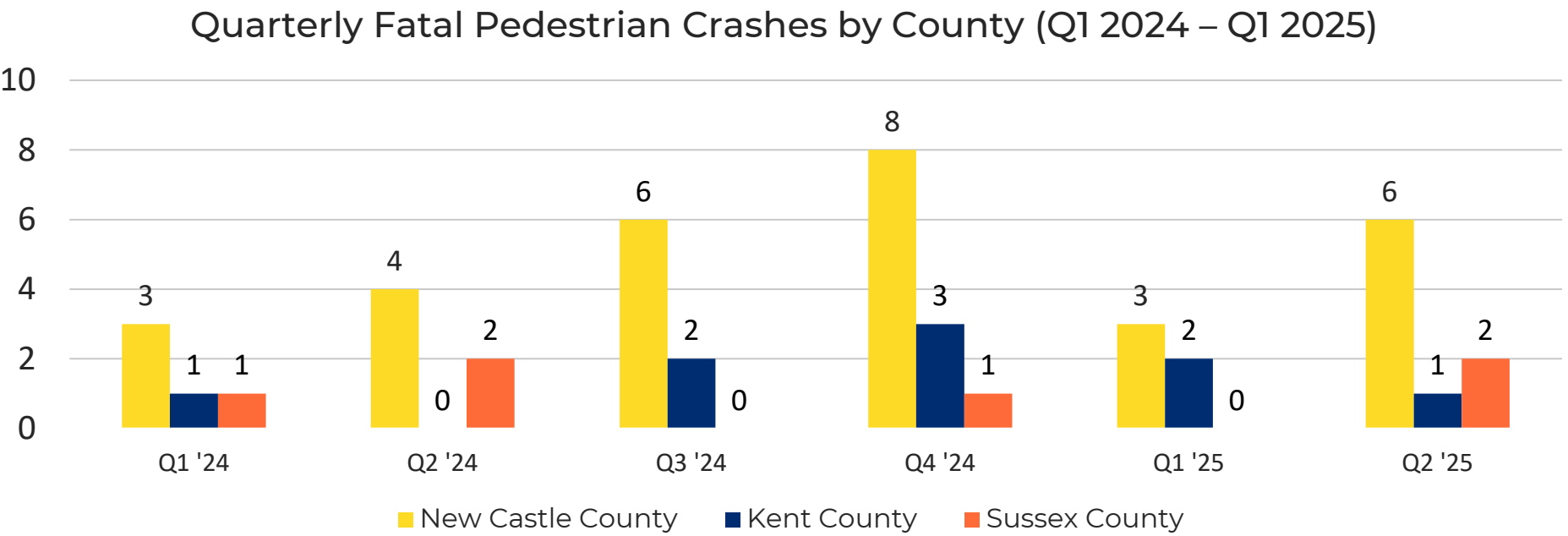
Please limit comments to three minutes or less.

3. Fatal Pedestrian Crashes QTR 2 - 2025

Fatal Pedestrian Crashes April – June 2025

Date	Day	Time	County	Full Location	Functional Class.	# Ped
04/04/25	Fri	23:36	New Castle	Augustine Cutoff, south of Alapocas Dr	Minor Arterial	1
04/07/25	Mon	05:12	New Castle	SR 4 Maryland Ave, west of Lower Oak St; Wilmington	Other Principal Arterial	1
04/22/25	Tue	04:54	Sussex	US 113 DuPont Blvd NB, north of Ennis St/W North St; Georgetown	Other Principal Arterial	1
04/25/25	Fri	23:24	New Castle	SR 2 Kirkwood Hwy WB, east of S Woodward Ave	Other Principal Arterial	1
04/28/25	Mon	14:51	New Castle	Salem Church Rd, south of Chapman Rd	Minor Arterial	1
04/29/25	Tue	16:36	New Castle	SR 273 E Main St, west of Haines St; Newark	Other Principal Arterial	1
06/10/25	Tue	02:21	Kent	SR 1 NB, south of White Oak Rd; Dover	Other Expressway/Freeway	1
06/15/25	Sun	20:51	Sussex	Bethel Rd, west of Oneals Rd	Minor Collector	1
06/25/25	Wed	22:36	New Castle	US 13 US 40 S DuPont Hwy SB, south of 3rd Ave	Other Principal Arterial	1

3. Fatal Pedestrian Crashes - QTR 2 of 2025





Traffic Calming Design Manual

2025 Edition



Excellence in Transportation **Every Trip.**

We strive to make every trip taken in Delaware safe, reliable and convenient for people and commerce.

Every Mode.

We provide safe choices for travelers in Delaware to access roads, rails, buses, airways, waterways, bike trails and walking paths.

Every Dollar.

We seek the best value for every dollar spent for the benefit of all.

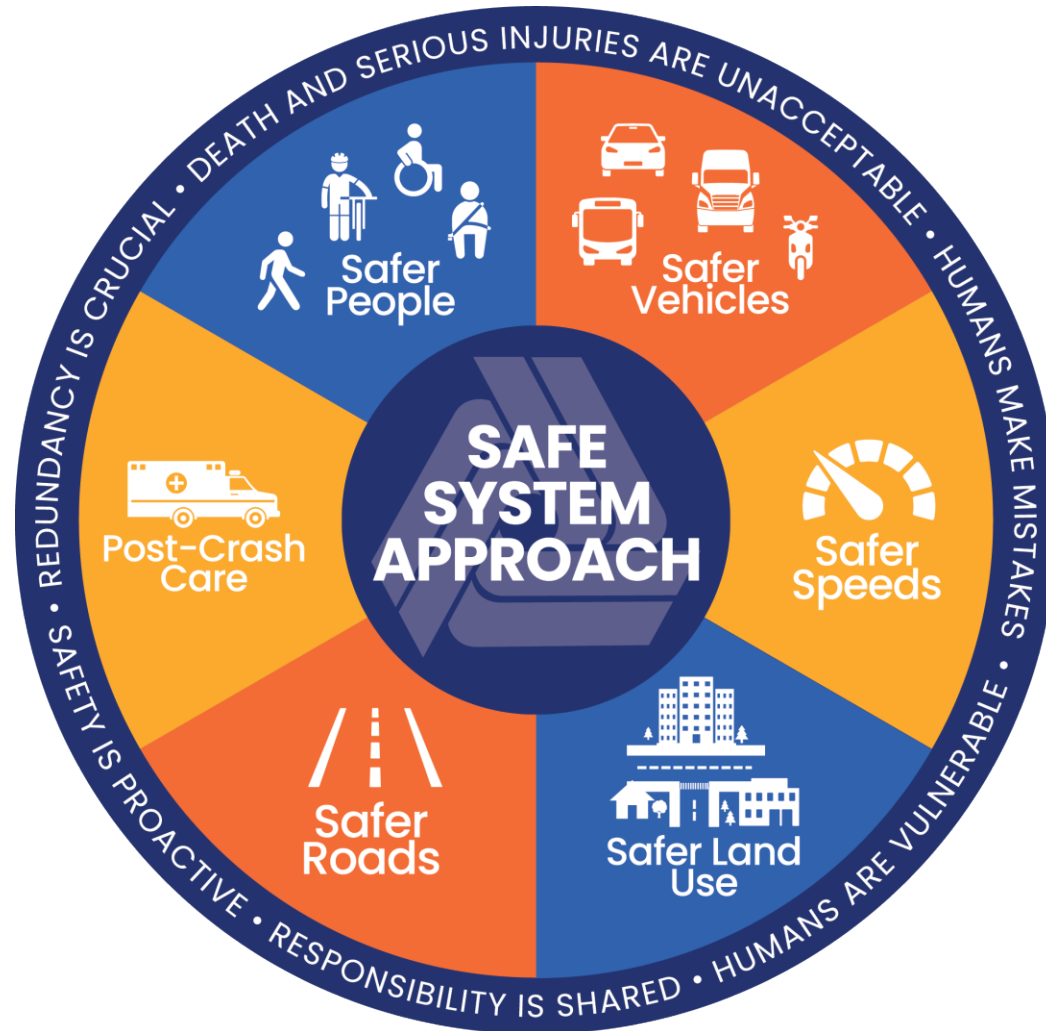
Everyone.

We engage our customers and employees with respect and courtesy as we deliver our services.

Delaware Traffic Fatalities

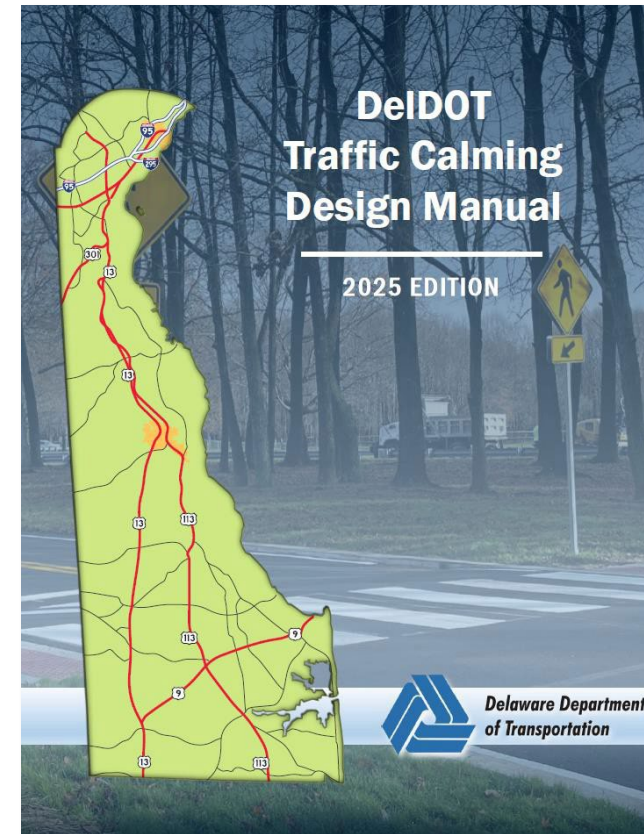
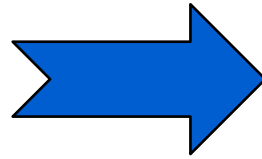
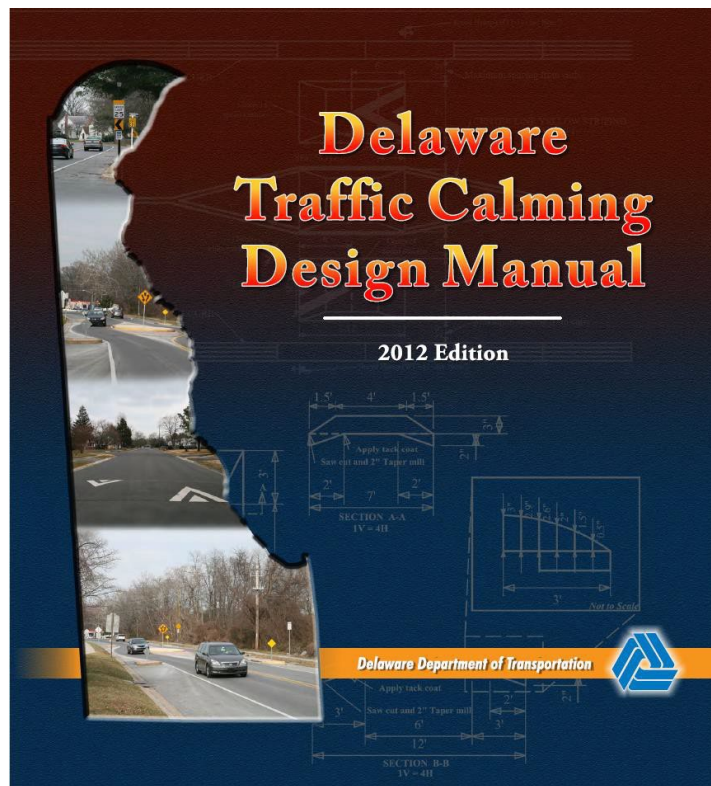
2025 Delaware Total Fatalities as of 07/17/25									
	2025	2024				2023			
	Year-to-date	Year-to-Date		Total		Year-to-Date		Total	
Fatalities	54	75	↓	-28%	130	81	↓	-33%	137
Delaware Residents	40	61	↓	-34%	110	62	↓	-35%	110
Person Types									
Vehicle Occupant	29	41	↓	-29%	65	59	↓	-51%	89
Pedestrian	15	15		0%	34	12	↑	+25%	28
Bicyclist	1	3	↓	-67%	5	2	↓	-50%	5
Motorcyclist	8	12	↓	-33%	21	8		0%	14
Other Person Type	1	4	↓	-75%	5	0	↑	+100%	1
Crash Types									
Curve Related	9	14	↓	-36%	23	16	↓	-44%	28
Roadway Departure	24	29	↓	-17%	42	43	↓	-44%	69
Intersection Related	15	28	↓	-46%	48	18	↓	-17%	37
Median Crossover	1	0	↑	+100%	0	6	↓	-83%	8
Wrong Way	2	2		0%	4	1	↑	+100%	1
Work Zone	4	4		0%	5	6	↓	-33%	9

Safe System Approach



Traffic Calming Design Manual

- The latest version of the TCDM was adopted in April 2025



Purpose

- The TCDM was developed to:
 - Provide administrative procedures needed to evaluate and implement traffic calming measures
 - Provide guidance on applications for traffic calming
 - Provide guidance on geometric design, signing, and pavement marking related to traffic calming measures



Table of Contents

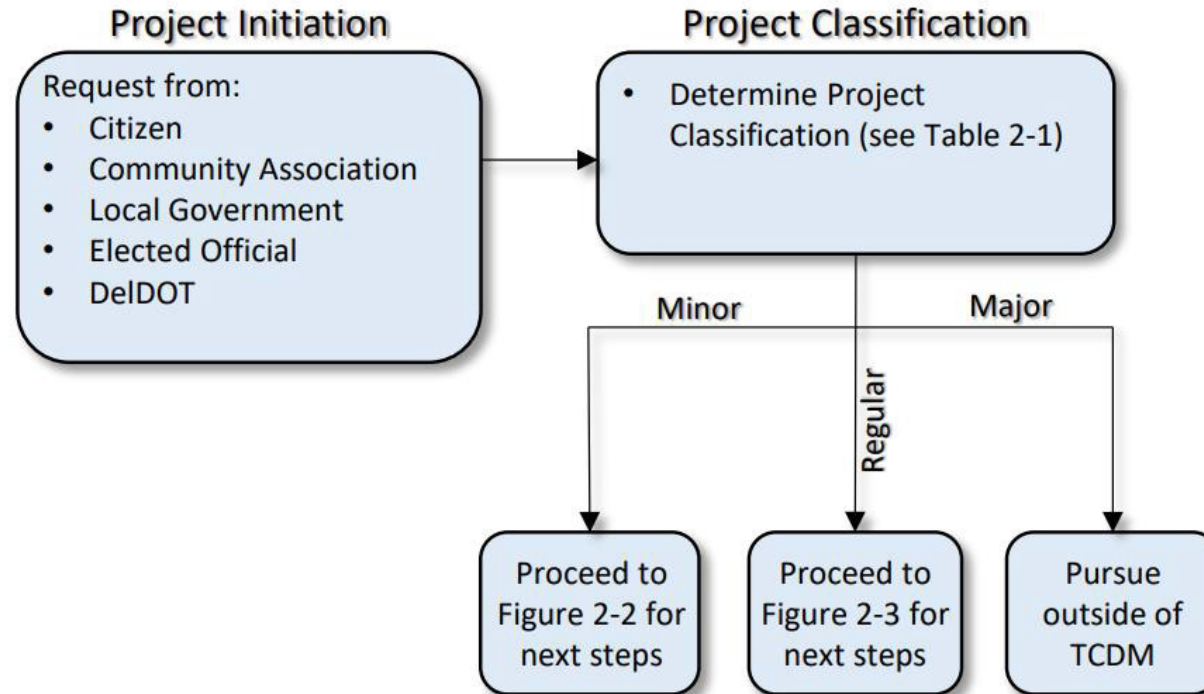
TABLE OF CONTENTS

CHAPTER 1	1
1A. Introduction	1
1A.1 Purpose	2
1A.2 Relationship to Other Traffic Calming Measures	2
CHAPTER 1 INTRODUCTION AND BACKGROUND	3
1B.1 Preparation and Revisions to the Manual	5
1B.2 DelDOT Traffic Calming Experience	6
1C. Traffic Calming Design Manual Updates	8
CHAPTER 2	9
2A. Project Development Process	9
2A.1 Project Initiation	10
2A.1.1 Optional Community Meeting	10
2A.2 Project Classification	11
2B. Minor Project Procedure	12
2B.1 Project Scoping	12
2B.2 Project Approval	12
CHAPTER 2 TRAFFIC CALMING PROCESS AND PROCEDURES	13
2C. Project Implementation	14
2C.4 Project Approval	15
2C.4.1 Community and Working Group Meeting(s)	15
2C.4.2 Public Workshop	16
2C.4.3 Community Ballot	17
2C.5 Project Implementation	17
2D. Major Projects	18
2E. Demonstration Projects	19
2F. Community Ballots	20



2G. Project Funding	21
2G.1 Funding Sources	21
2G.2 Priority Rating	22
2H. Project Monitoring	22
2I. Project Maintenance	22
2J. Modification or Removal	23
CHAPTER 3	24
3A. Lateral Shift	25
3B. Chicane	29
3C. Realigned Intersection	33
3D. Neighborhood Traffic Calming	37
3E. Corner Extension	42
3F. Choker	46
3G. Median Island	50
3H. Partial Closure	54
3I. Road Diet (Roadway Reconfiguration)	58
3J. Diagonal Diverters	60
3K. Intersection Barriers	64
3L. Forced Turn Islands	68
CHAPTER 4	71
4A. Speed Hump	73
4B. Speed Cushion	77
4C. Speed Table / Raised Intersection	82
4D. Raised Intersection	86
CHAPTER 4 HORIZONTAL MEASURES	50
CHAPTER 5	90
5A. Yard Signs	91
5B. Advanced Warning Signs	93
5C. Speed Limit Signs	95
5D. Other Traffic Calming Measures	97
CHAPTER 5 OTHER TRAFFIC CALMING MEASURES	99
APPENDIX A REFERENCES	A-i
APPENDIX B FREQUENTLY ASKED QUESTIONS	B-i
APPENDIX C COST ESTIMATES	C-i

Project Initiation & Classification

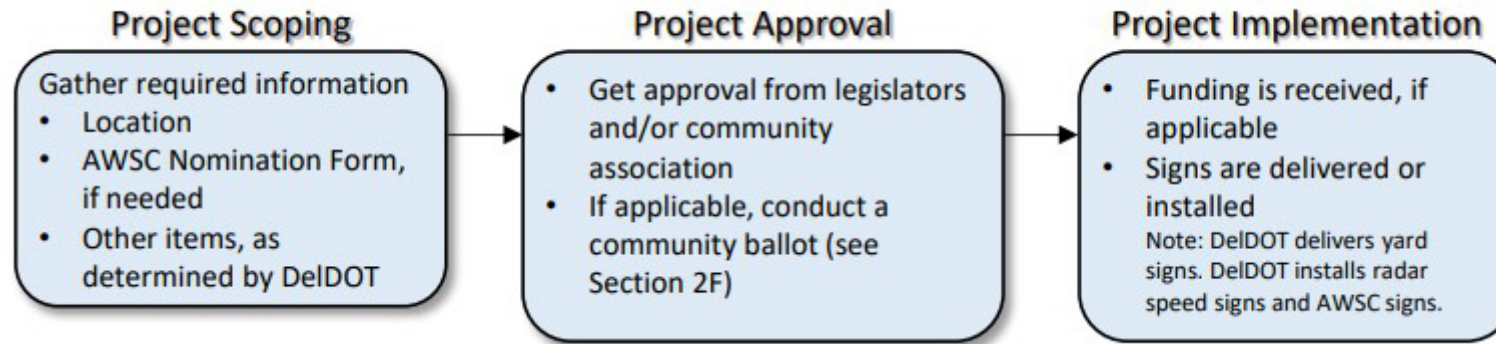


Project Classification

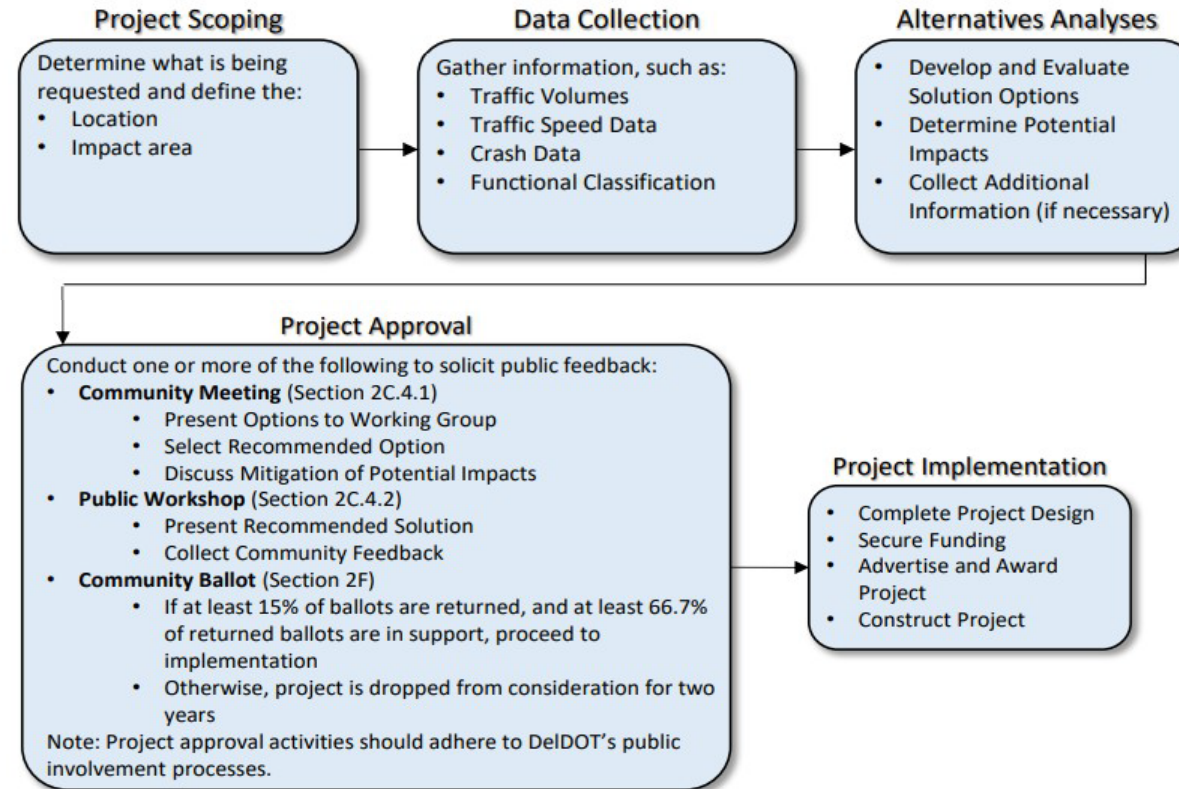
Project Classification	Project Type
Minor	Yard Signs (Section 5A) Radar Speed Signs (Section 5B) All-Way Stop Control (Section 5D)
Regular	<u>All Horizontal Measures*</u> (Chapter 3) <u>All Vertical Measures*</u> (Chapter 4) One-Way Restrictions* (Section 5C) Lane Narrowing (Section 5E) Speed Reduction Markings (Section 5F) <i>*Projects that have Right-of-Way Impacts, require Environmental Permits, or have impacts to drainage are considered Major projects (see below)</i>
Major	Projects that require new right-of-way, environmental permits, or changes to drainage <i>These projects fall outside of the Traffic Calming Program and must be considered and prioritized through the TIP and CTP processes.</i>



Minor Project Procedure



Regular Project Procedure



Traffic Calming Measures

**Horizontal
Measures**

**Vertical
Measures**

**Other
Measures**



Horizontal Traffic Calming Measures

Lateral Shift



Source: ITE Traffic Calming State of the Practice, August 1999

Chicane



Realigned Intersection



Traffic Circle & Mini-Roundabout



Horizontal Traffic Calming Measures

Choker



Median Island



Corner Extension /
Bulbout



Partial Closure



Horizontal Traffic Calming Measures

Diagonal Diverters



Intersection Barriers



Road Diet / Roadway Reconfiguration



Forced Turn Islands



Traffic Calming Measures

**Horizontal
Measures**

**Vertical
Measures**

**Other
Measures**



Vertical Traffic Calming Measures

Speed Humps



Speed Cushions



Speed Tables & Raised Crosswalks

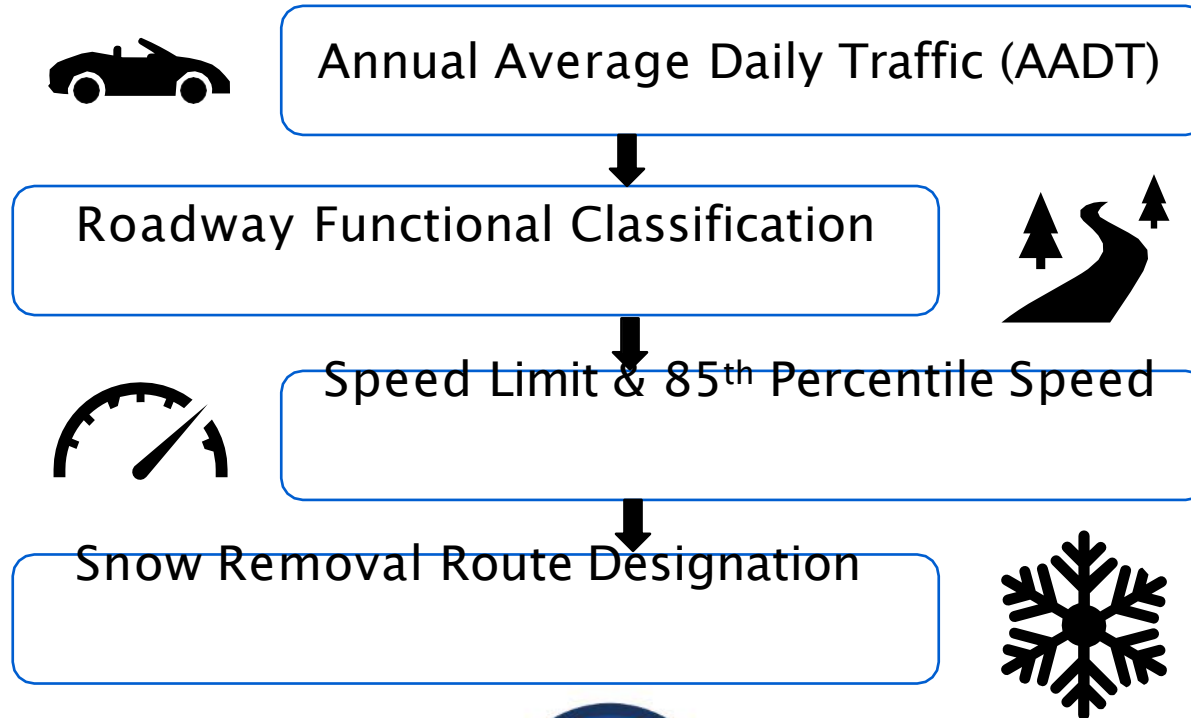


Raised Intersections

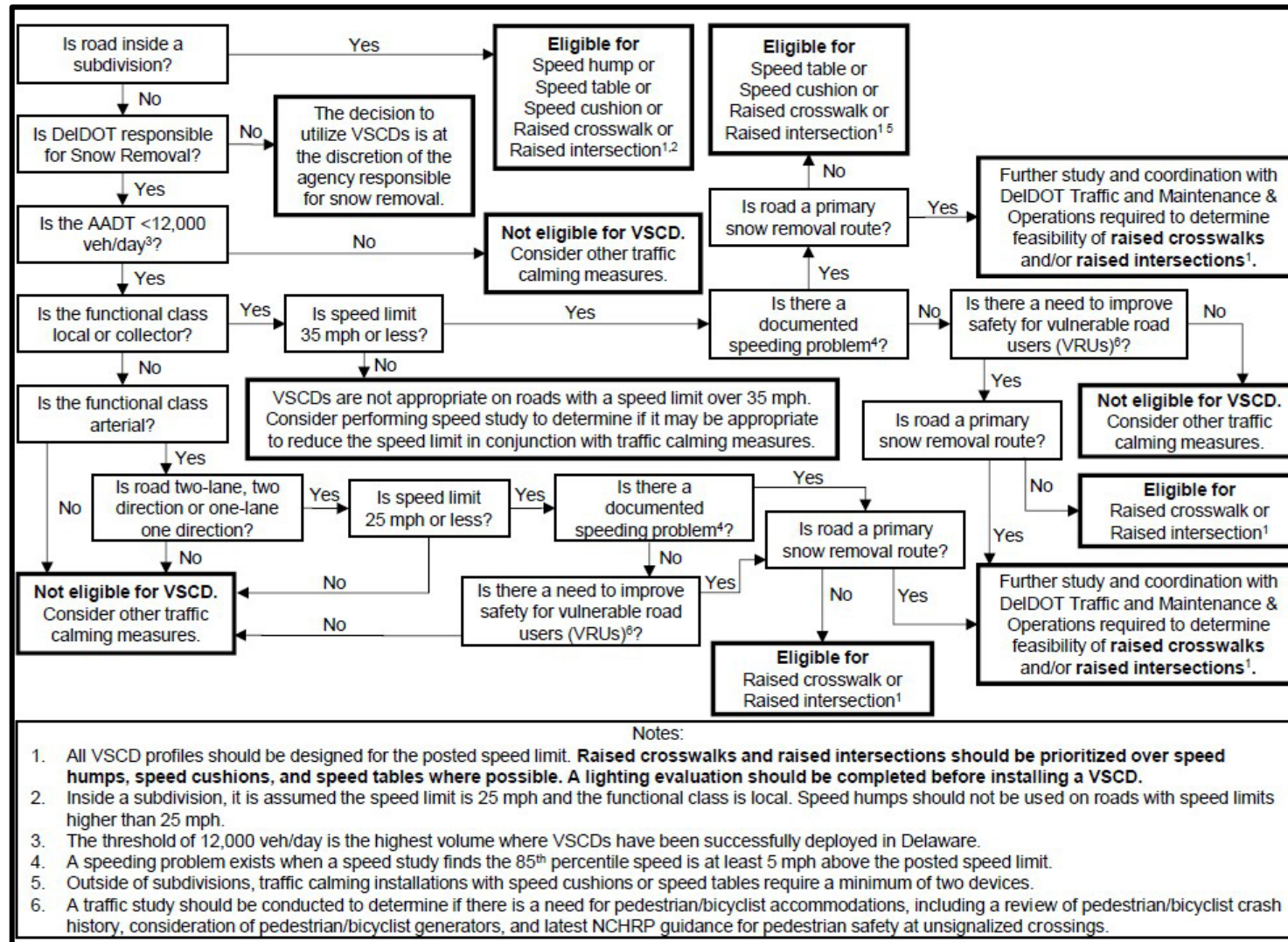


Eligibility for Vertical Measures

New flowchart procedure to determine eligibility based on.....



Vertical Speed Control Devices (VSCDs) Flowchart



Traffic Calming Measures

**Horizontal
Measures**

**Vertical
Measures**

**Other
Measures**



Other Traffic Calming Measures

- Yard Signs
- Radar Speed Signs
- One-Way Restrictions
- All-Way Stop Control (AWSC)
- Lane Narrowing (Pavement Markings)
- Speed Reduction Markings



Cost Estimates

Traffic Calming Measure	Cost (2023 Dollars)
<i>Horizontal Measures</i>	
Lateral Shift	\$125,000 - \$175,000 <i>each</i>
Chicane	\$125,000 - \$175,000 <i>each</i>
Realigned Intersection	\$35,000 - \$45,000 <i>each</i>
Traffic Circle	\$25,000 - \$35,000 <i>each</i>
Mini-Roundabout	\$450,000 - \$550,000 <i>each</i>
Corner Extension / Bulbout	\$350,000 - \$400,000 <i>each</i>
Choker	\$25,000 - \$35,000 <i>each</i>
Median Island	\$100,000 - \$150,000 <i>each</i>
Partial Closure	\$75,000 - \$125,000 <i>each</i>
Road Diet / Roadway Reconfiguration	\$225,000 - \$275,000 <i>per mile</i>
Diagonal Diverter	\$250,000 - \$300,000 <i>each</i>
Intersection Barrier	\$100,000 - \$150,000 <i>each</i>
Forced Turn Island	\$125,000 - \$175,000 <i>each</i>
<i>Vertical Measures</i>	
Speed Humps	\$10,000 - \$15,000 <i>each</i>
Speed Cushions	\$8,000 - \$12,000 <i>each</i>
Raised Crosswalks / Speed Tables	\$40,000 - \$50,000 <i>each</i>
Raised Intersections	\$150,000 - \$200,000 <i>each</i>
<i>Other Measures</i>	
Yard Signs	DelDOT funds
Radar Speed Signs	\$3,500 - \$6,000 <i>each</i>
One-Way Restrictions	DelDOT funds
All-Way Stop Control (AWSC)	DelDOT funds
Lane Narrowing	\$50,000 – \$75,000 <i>per mile</i>
Speed Reduction Markings	\$8,000 - \$12,000 <i>per application</i>

Above cost estimates include materials, labor, installation, mobilization, construction inspection, and maintenance of traffic during construction. Above cost estimates do not account for inflation over time.

Traffic Calming Design Manual

Pedestrian Guidance

Traffic calming projects.....

...that impact existing pedestrian facilities OR incorporate new pedestrian facilities **shall** be designed and constructed in accordance with DelDOT's current [accessibility standards](#).

Traffic calming projects.....

...improve pedestrian safety by reducing travel speeds, providing reduced crossing distances, and/or increasing visibility of vulnerable road users.

Traffic Calming Design Manual

Pedestrian Guidance

- Horizontal Measures
 - **Realigned intersections** may provide reduced crossing distance for pedestrians
 - **Corner Extensions/ Bulbouts** and **Chokers** reduce the crossing distance and increase pedestrian visibility
 - **Chokers** provide the opportunity for mid-block pedestrian crossings and reduce pedestrian crossing distances
 - **Median islands** provide the opportunity for pedestrian refuge, thus reducing pedestrian crossing distances and allowing pedestrians to cross only one direction of traffic at a time
 - **Partial closures** reduce crossing distance for pedestrians and the number of conflict points
 - **Road Diets** increase the mobility and safety for pedestrians and bicyclists and may reduce pedestrian crossing distances and/or provide opportunities for pedestrian refuge
 - **Diagonal diverters** and **Intersection Barriers** should include openings sufficient for bicyclists and pedestrians to pass through
 - **Forced Turn islands** may provide pedestrian refuge and reduced crossing distances

Traffic Calming Design Manual

Pedestrian Guidance

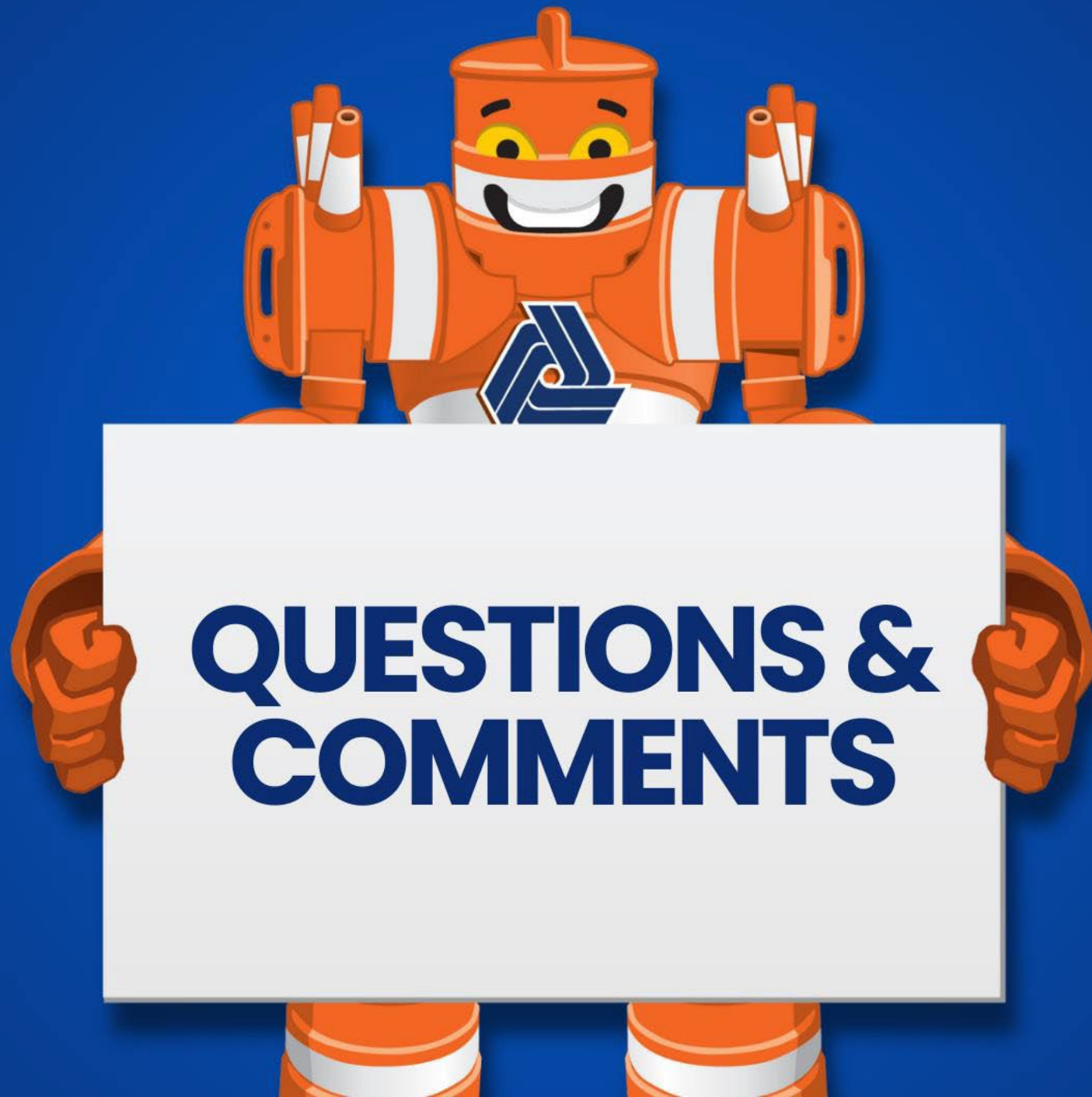
- Vertical Measures
 - **Speed Tables / Raised Crosswalks**, outside of subdivisions, should incorporate existing or future pedestrian facilities
 - **Raised intersections** are typically installed at intersections with high pedestrian volumes that are controlled by a traffic signal or all-way stop control
- Other Measures
 - **Lane Narrowing** can provide a larger buffer between vehicles and pedestrians or bicyclists



Traffic Calming Design Manual

Pedestrian Guidance

[illegible]



**QUESTIONS &
COMMENTS**



THANK YOU!



<https://linktr.ee/delawaredot>

4. Subcommittee Updates

Everyone Gets Home Summit Recap

Several members of the Pedestrian Council attended the Everyone Gets Home Summit in Dover on June 18th.

- Council members shared informational handouts about the Council.
- Council members also promoted a poster with safety outreach material voting options.
 - These votes will help us to identify which items the Council may wish to purchase moving forward.



Safety Items Voting Board

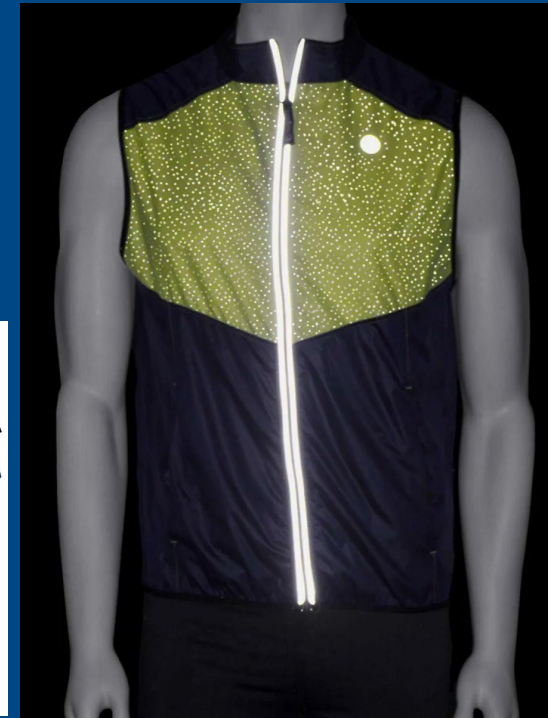
<div>Reflective Black Tote Bag</div> <div></div>	<div>Reflective Black Fanny Pack</div> <div></div>	<div>Reflective Cap</div> <div></div>	<div>Reflective Black Beanie</div> <div></div>	<div>Reflective Blue Jacket</div> <div></div>	<div>Flashing LED Safety Light</div> <div></div>	<div>Other requests?</div> <div>Leave your suggestions below.</div>
	<div><div></div><div></div><div></div></div>	<div><div></div></div>	<div><div></div><div></div></div>	<div><div></div><div></div><div></div><div></div><div></div><div></div></div>	<div><div></div><div></div><div></div><div></div><div></div><div></div></div>	<div>(See next slide)</div>
<div>Reflective Yellow Tote Bag</div> <div></div>	<div>Reflective Green Fanny Pack</div> <div></div>	<div>Reflective Slap Bracelet</div> <div></div>	<div>Reflective Orange Beanie</div> <div></div>	<div>Reflective Black Jacket</div> <div></div>	<div>Reflective Zipper Pull</div> <div></div>	
<div><div></div><div></div></div>	<div><div></div><div></div><div></div><div></div><div></div><div></div></div>	<div><div></div><div></div></div>	<div><div></div><div></div></div>	<div><div></div><div></div><div></div><div></div><div></div></div>	<div><div></div><div></div><div></div><div></div><div></div></div>	

4. Subcommittee Updates

Everyone Gets Home Summit Recap

Write-In Suggestions from Attendees:

- Reflectors for pull carts
- Reflective t-shirt for summer temperatures
- Reflective bike vests
- Reflective spokes for bicycles
- Reflective decorations for shoes
- Reflective/light up collars and leashes for dogs



4. Subcommittee Updates

Everyone Gets Home Summit Recap

Overall Safety Outreach Item Results

- Most popular items:
 - Reflective fanny packs
 - Flashing LED safety lights
- Other popular items:
 - Reflective jackets
 - Reflective zipper pulls





4. Subcommittee Updates

Land Use Coordination Subcommittee

The Land Use Coordination Committee last met on June 2.

The next meeting is planned for July 21.

Discussion items from recent meeting:

- Accessibility and connectivity improvements to make transit a more viable option for all Delaware residents.
- Improving pedestrian safety through modifications and improvements to land use planning, regulations, and processes in Delaware.
- How state agencies and municipalities can better identify gaps in the system of pedestrian paths and sidewalks to create a system of sidewalks and pathways that is continuous and interconnected.
- Approved the subcommittee's purpose and goals.



4. Subcommittee Updates

Pedestrian Safety Outreach and Education Subcommittee

- The Pedestrian Safety Outreach and Education Committee last met on July 9th.
- The next meeting is planned for August 13.

Future items:

- Focus on following items to align to Senate Bill No. 50:
 - Messages for effective outreach
 - Quantifying outreach and giveaways
 - Education and outreach to decision-makers
 - Working with existing agencies to understand outreach regarding pedestrians (focusing on Pedestrian Safety Month)

4. Subcommittee Updates

Outreach and Education: Upcoming Safety Outreach Events

These events could provide an opportunity to gather more data regarding the reflective safety items.

- Tuesday, August 5 – Newark National Night Out, Academy Street – 6 to 8 p.m. with setup at 5 p.m.
- Tuesday, August 5 – Dover National Night Out, Dover High School – 5 to 8 p.m. with setup at 4 p.m. (times and location to be confirmed)
- Tuesday, August 12, 2025 – Greenwood National Night Out, Greenwood Fire Co. – 6 to 8 p.m. with setup at 5 p.m.
- Saturday, August 16, 2025 – Ellendale Family Fun Day, Town Park 300 McCaulley Avenue - 10 a.m. - 2 p.m. with setup at 7:45 a.m.
- Tuesday, August 19, 2025 – Wyoming National Night Out, Wyoming Park – 6 to 8 p.m. with setup at 4:30 p.m.



4. Subcommittee Updates

Outreach & Education: DART's Public Hearing Dates

Additionally, below are DART's public hearing times.

Tuesday (09/16)

- Wilmington Library – 11:30 AM – 1:30 PM
- Bear Library – 4:00 PM – 6:00 PM

Wednesday (09/17)

- Georgetown Library – 11:00 AM – 12:30 PM
- Lewes Transit Center – 4:00 PM – 6:00 PM

Thursday (09/18)

- Dover Library – 4:00 PM – 6:00 PM

5. Council Budget

Council Approved Spending Plan for 2025:

Budget Uses	Price
Pop-Up Project Materials	\$15,000
Safety Outreach Materials	\$3,500
Everyone Gets Home Summit	\$1,500
Total	\$20,000

- Pop-up project materials and safety outreach items have been ordered and are on the way.

Discussion: How to distribute the safety materials?





6. Agency Updates

Updates from Council Members Representing Agencies

Round-robin updates from the following agencies.

- Department of Safety and Homeland Security
- State Council for Persons with Disabilities
- ADA Title II Coordinators
- DTC
- Department of Land Use and Planning for the City of Wilmington
- Department of Planning Services for Kent County
- Sussex County Planning & Zoning
- League of Local Governments

7. Focus Areas for 2025 (FY26)

Alignment with Senate Bill No. 50 Requirements



In addition to the items already mentioned by subcommittees, the following items will be of focus for 2025:

- Pedestrian priority area program for improving pedestrian safety in high crash areas. – DelDOT working on this, then Council for review.
- Traffic rules review to identify any legal changes needed to better support a safer pedestrian environment. – Need someone to take lead on this.
- Filling vacancies on the Council.



8. Next Meeting Date

Dates for Upcoming Meetings:

Land Use Subcommittee Meeting #4:

- 1:00 PM – 2:00 PM Monday, July 21

Fourth Council Meeting of 2025:

- 1:00 PM – 3:00 PM Thursday, October 23

First Council Meeting of 2026:

- 1:00 PM – 3:00 PM Thursday, January 22



Thank you!

Kelly Valencik, AICP

Planner IV,
Department of Transportation

☎ 302-760-2254

✉ Kelly.Valencik@delaware.gov