

# Delaware Sustainable Transportation Funding Task Force

December 1, 2025



*Excellence in Transportation*

## **Every Trip.**

We strive to make every trip taken in Delaware safe, reliable and convenient for people and commerce.

## **Every Mode.**

We provide safe choices for travelers in Delaware to access roads, rails, buses, airways, waterways, bike trails and walking paths.

## **Every Dollar.**

We seek the best value for every dollar spent for the benefit of all.

## **Everyone.**

We engage our customers and employees with respect and courtesy as we deliver our services.

# Safety

## 2025 Delaware Total Fatalities

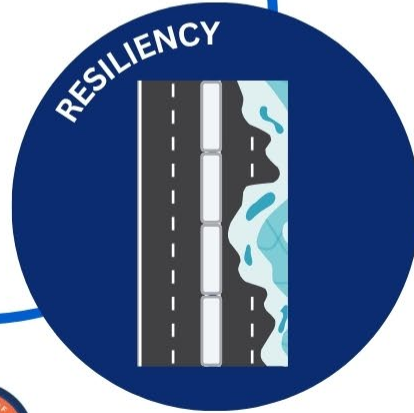
as of 11/26/2025

	2025	2024			2023				
		YTD	Totals	YTD	Totals	YTD	Totals		
<b>Fatalities</b>	<b>105</b>	<b>121</b> ↓	<b>-13%</b>	130	127	↓	<b>-17%</b>	137	
Delaware Residents	80	101	↓	-21%	110	100	↓	-20%	110
<b>Person Types</b>									
Vehicle Occupant	59	62	↓	-5%	65	86	↓	-31%	89
Pedestrian	23	28	↓	-18%	34	21	↑	10%	28
Bicyclist	4	5	↓	-20%	5	5	↓	-20%	5
Motorcyclist	17	21	↓	-19%	21	14	↑	21%	14
Other Person Type	2	5	↓	-60%	5	1	↑	100%	1
<b>Crash Types</b>									
Curve Related	13	23	↓	-43%	23	28	↓	-54%	28
Roadway Departure	46	41	↑	12%	42	68	↓	-32%	69
Intersection Related	32	44	↓	-27%	48	32		0%	37
Median Crossover	2	0	↑	N/A	0	8	↓	-75%	8
Wrong Way	4	4		0%	4	1	↑	300%	1
Work Zone	7	5	↑	40%	5	9	↓	-22%	9

**BE DELAWARE.**  
TOWARD ZERO DEATHS  
BEDELAWARE.DELDOT.GOV







## DeIDOT Assets



89% of Public  
Roadways



1,803 Bridges  
and One  
Ferry



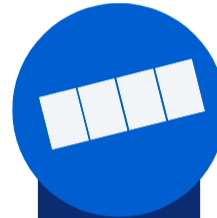
Over 1,200  
Traffic  
Signals



5,950+  
Streetlights



400+ Miles of  
Guardrail



238 Miles of  
Sidewalk



37 Miles of  
Bike Paths



534 DART  
Buses



1,434 Fleet  
Vehicles



35 Dams



439 Sign  
Structures



130 Buildings



772  
Stormwater  
Management  
Facilities



4,077 Miles of  
Drainage  
Swales



1,693 Miles of  
Storm Drains



83,000  
Drainage  
Structures



## DelDOT Annual Customers Served



1,150,424 DMV  
Transactions  
Annually



80M Toll  
Transactions  
Annually



5.3M Fixed  
Route Trips



866,000  
Paratransit  
Trips



654,000  
SEPTA Trips

# Agenda

- Welcome
- Review & Approve Minutes from October 27<sup>th</sup> meeting
- Discussion - 2011 Task Force Report
- DTC Revenue and Cost Overview
- Revenue Data Overview
- Next Meeting: January 5th 11-12:30pm
- Public Comment



# 2011 TTF Task Force Report Discussion

# DTC Revenue and Cost Review

---

# 10 Year Delaware Transit Corporation Summary



**DART**  
*Moving Forward*

# Our Mission

---

**DART - Connecting you to what matters**

**Every Ride • Every Customer • Every Day**

# Our Vision

---



**Every Ride**

We strive to provide a safe, reliable, convenient ride to everyone.



**Every Customer**

We aspire to provide our customers with an excellent experience with every interaction.



**Every Day**

We connect people to their destinations throughout the state and the region.



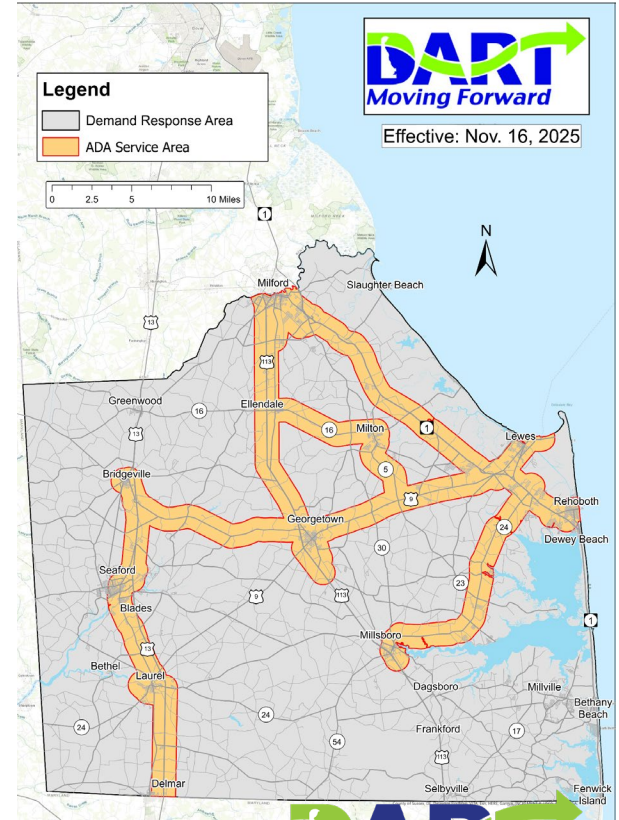
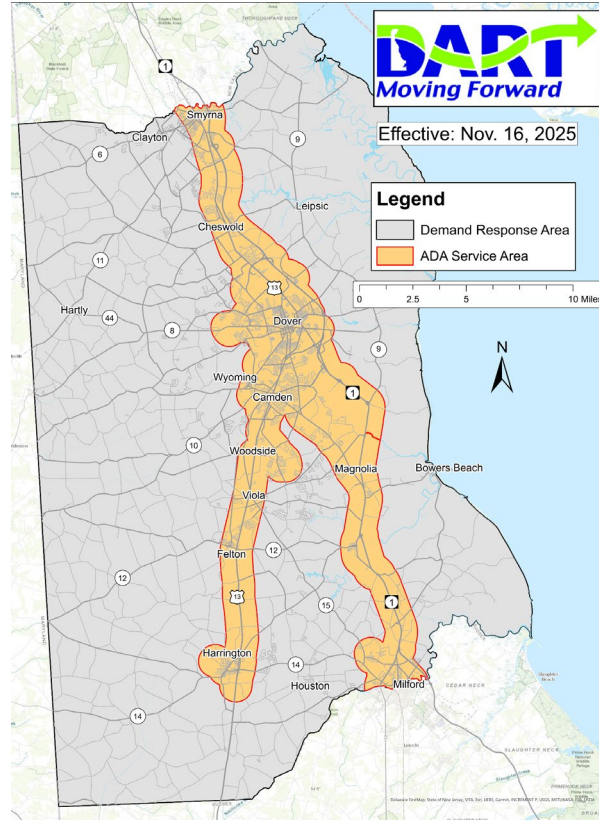
# Service Overview

- ☰ DART Fixed Route Service has 54 total bus routes
  - ☰ 33 New Castle County
  - ☰ 10 Kent County
  - ☰ 6 Sussex County
  - ☰ 4 Intercounty and 1 Flex Route
- ☰ Microtransit services Georgetown/Millsboro and Newark.
- ☰ Seasonal Fixed Route Beach Bus Service



- ☰ Paratransit services far exceeding the federal ADA requirement zones of  $\frac{3}{4}$  mile from a fixed route.
- ☰ SEPTA Wilmington/Newark Line
- ☰ DTC employs around 1,100 people between operators, maintenance and administrative positions.

# Service Area – November 2025



# Fleet and Facilities

---

As of November 2025, DTC owns and maintains:

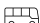
 535 Revenue Vehicles

 246 Fixed Route Buses

 282 Paratransit Buses

 7 Vans for Paratransit and  
Microtransit

 4 SEPTA Rail Cars

 Non-Revenue and support vehicle  
fleet consists of 109 vehicles

 DTC facilities in the state include:

 2 Administrative Buildings

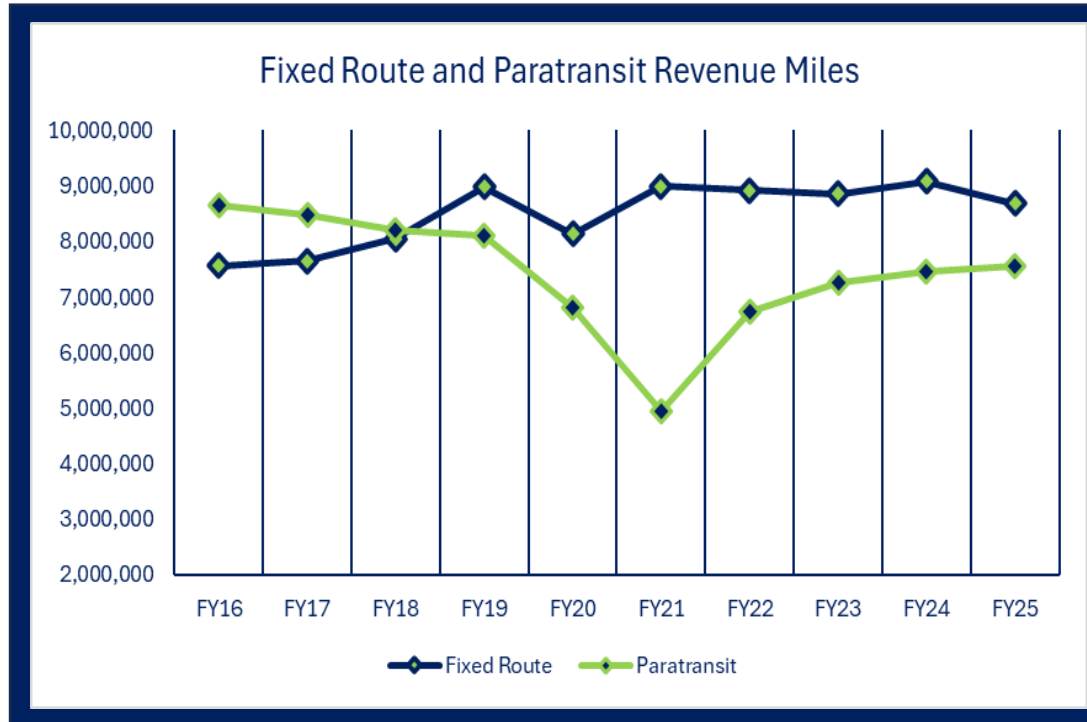
 6 operational/maintenance buildings

 2 parking garages

 8 passenger facilities

 Park and Rides throughout the state

# Revenue Mile History



# Operating Expenses

Year	Operating Expenses	
FY16	\$	120,405,708
FY17	\$	123,555,007
FY18	\$	130,969,981
FY19	\$	138,092,219
FY20	\$	135,299,937
FY21	\$	133,322,809
FY22	\$	136,327,934
FY23	\$	145,245,430
FY24	\$	153,175,045
FY25	\$	165,124,417
FY26 Bud	\$	158,543,373
FY27 Bud*	\$	161,195,192
FY28 Bud*	\$	166,729,069

\*FY27 budget is pending approval, FY28 budget used an estimate 2.5% increase for FR, 5% for Paratransit and 3% for SEPTA.



\*Operating expense data is from DTC's annual audited NTD submission



# Ridership Statistics

Year	Fixed Route	Paratransit	ADA	Non-ADA	SEPTA	DART Connect	Systemwide
FY16	8,401,294	981,677	644,613	337,064	1,240,830		10,623,801
FY17	7,512,218	953,234	625,936	327,298	1,128,094		9,593,546
FY18	7,170,059	926,884	608,634	318,250	1,160,079		9,257,022
FY19	7,162,659	945,628	620,942	324,686	1,196,630		9,304,917
FY20	6,010,461	758,064	497,779	260,285	840,692		7,609,217
FY21	3,993,887	455,171	298,886	156,285	211,975	3,345	4,664,378
FY22	4,110,318	696,195	457,153	239,042	404,032	19,879	5,230,424
FY23	5,017,921	811,075	532,588	278,487	499,837	19,305	6,348,138
FY24	5,394,405	858,178	563,518	294,660	663,683	27,409	6,943,675
FY25	5,346,439	866,880	569,232	297,648	654,866	30,563	6,898,748



Over the last 10 years fixed route (FR) averages about 79% of ridership, paratransit follows with 11%, and SEPTA takes the remaining 10%.

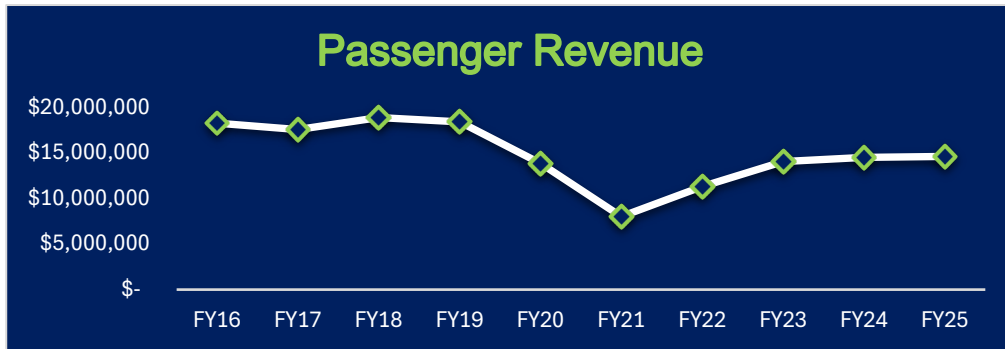


DART Connect was introduced as a pilot program in 2021 in Georgetown and now services Georgetown, Millsboro, and Newark, Delaware.

\*Ridership data is from DTC internal reporting

# Passenger Revenue History

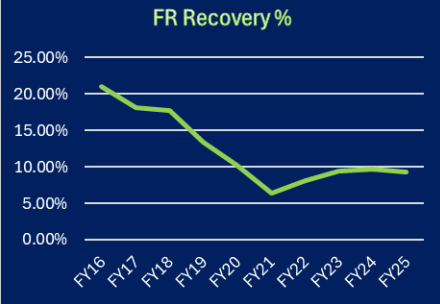
Year	Fixed Route	Paratransit	SEPTA	Total
FY16	\$ 11,191,088	\$ 2,737,230	\$ 4,358,075	\$ 18,286,393
FY17	\$ 10,345,384	\$ 3,274,106	\$ 3,950,978	\$ 17,570,468
FY18	\$ 10,521,628	\$ 4,201,964	\$ 4,162,043	\$ 18,885,635
FY19	\$ 9,404,935	\$ 4,603,000	\$ 4,407,877	\$ 18,415,812
FY20	\$ 6,993,330	\$ 3,535,716	\$ 3,324,597	\$ 13,853,643
FY21	\$ 4,958,897	\$ 2,152,242	\$ 907,968	\$ 8,019,107
FY22	\$ 6,173,019	\$ 3,306,181	\$ 1,820,449	\$ 11,299,649
FY23	\$ 7,543,407	\$ 3,869,149	\$ 2,637,535	\$ 14,050,091
FY24	\$ 7,868,425	\$ 3,999,367	\$ 2,650,869	\$ 14,518,661
FY25	\$ 7,859,644	\$ 3,865,729	\$ 2,878,512	\$ 14,603,885



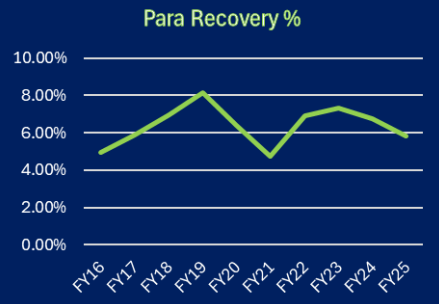
\*Revenue data is from DTC's annual audited NTD submission

# Recovery Ratio by Mode

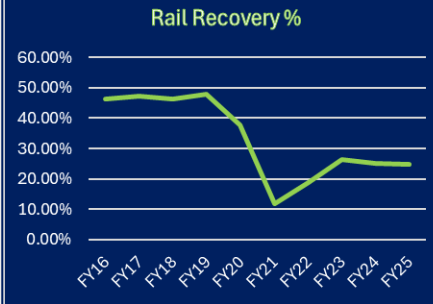
Year	FR OpEx	FR RR%
FY16	\$ 53,389,827	20.96%
FY17	\$ 57,096,428	18.12%
FY18	\$ 59,561,482	17.67%
FY19	\$ 70,124,653	13.41%
FY20	\$ 68,906,084	10.15%
FY21	\$ 77,645,192	6.39%
FY22	\$ 76,738,516	8.04%
FY23	\$ 80,434,037	9.38%
FY24	\$ 81,447,213	9.66%
FY25	\$ 85,158,384	9.23%



Year	DR OpEx	DR RR%
FY16	\$ 55,530,328	4.93%
FY17	\$ 55,968,394	5.85%
FY18	\$ 60,287,047	6.97%
FY19	\$ 56,627,439	8.13%
FY20	\$ 55,526,249	6.37%
FY21	\$ 45,611,483	4.72%
FY22	\$ 47,861,661	6.91%
FY23	\$ 52,730,428	7.34%
FY24	\$ 59,074,221	6.77%
FY25	\$ 66,311,582	5.83%

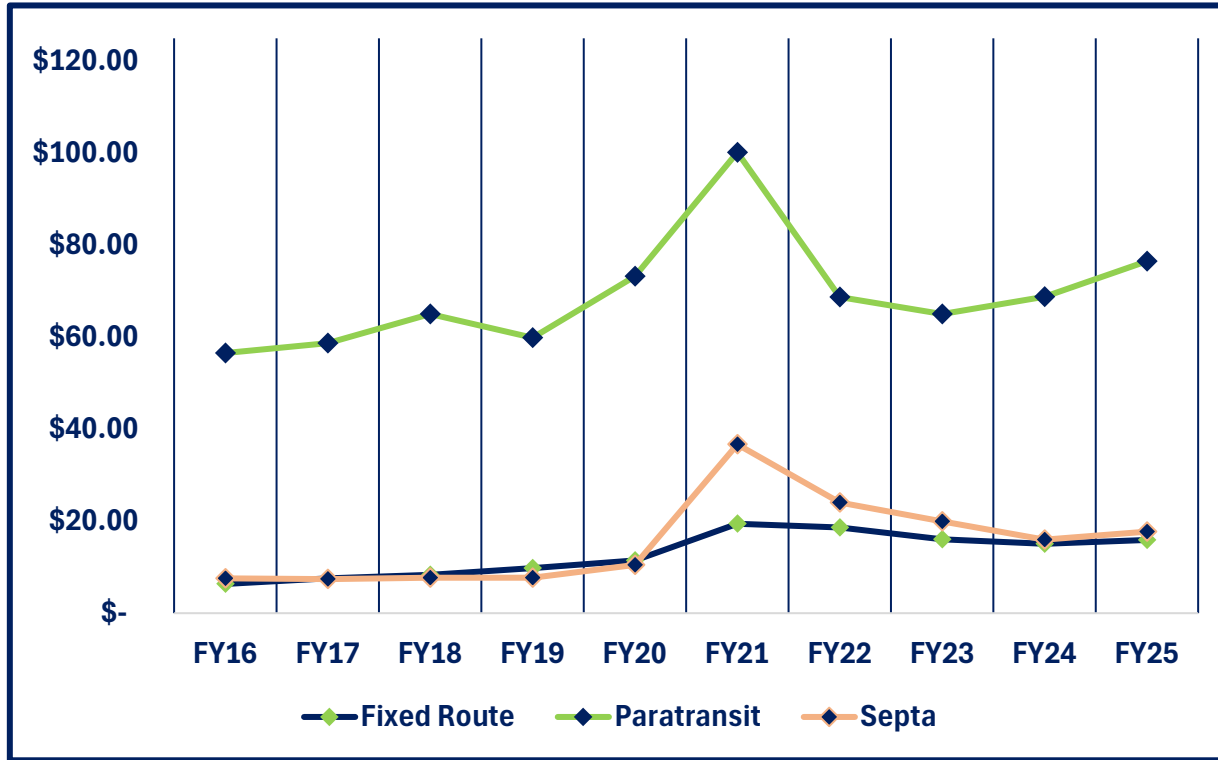


Year	Rail Costs	Rail RR%
FY16	\$ 9,427,958	46.23%
FY17	\$ 8,355,237	47.29%
FY18	\$ 8,962,218	46.44%
FY19	\$ 9,220,804	47.80%
FY20	\$ 8,798,773	37.78%
FY21	\$ 7,778,835	11.67%
FY22	\$ 9,729,520	18.71%
FY23	\$ 9,974,106	26.44%
FY24	\$ 10,595,089	25.02%
FY25	\$ 11,604,255	24.81%

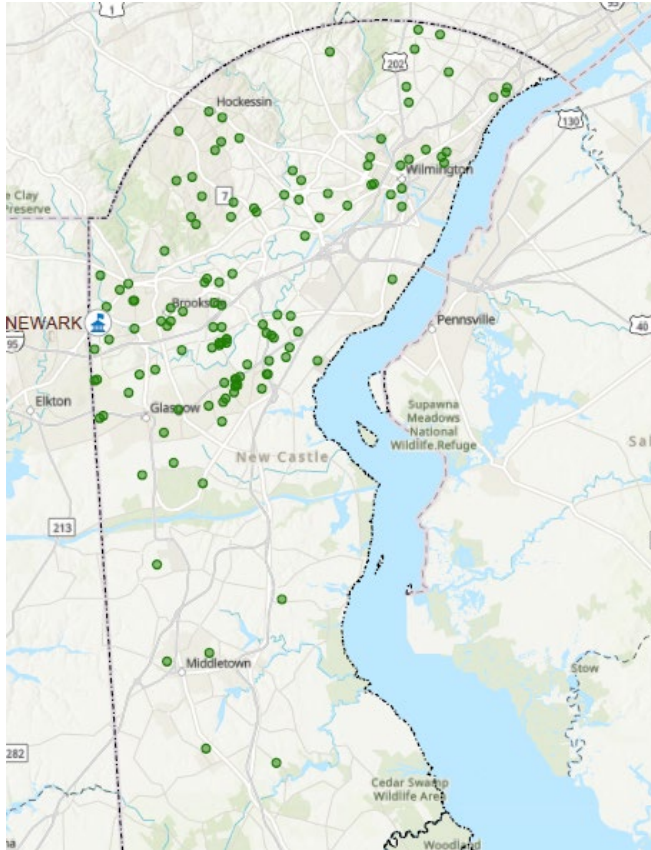


\*Revenue and expense data is from DTC's annual audited NTD submission

# Cost Per Trip



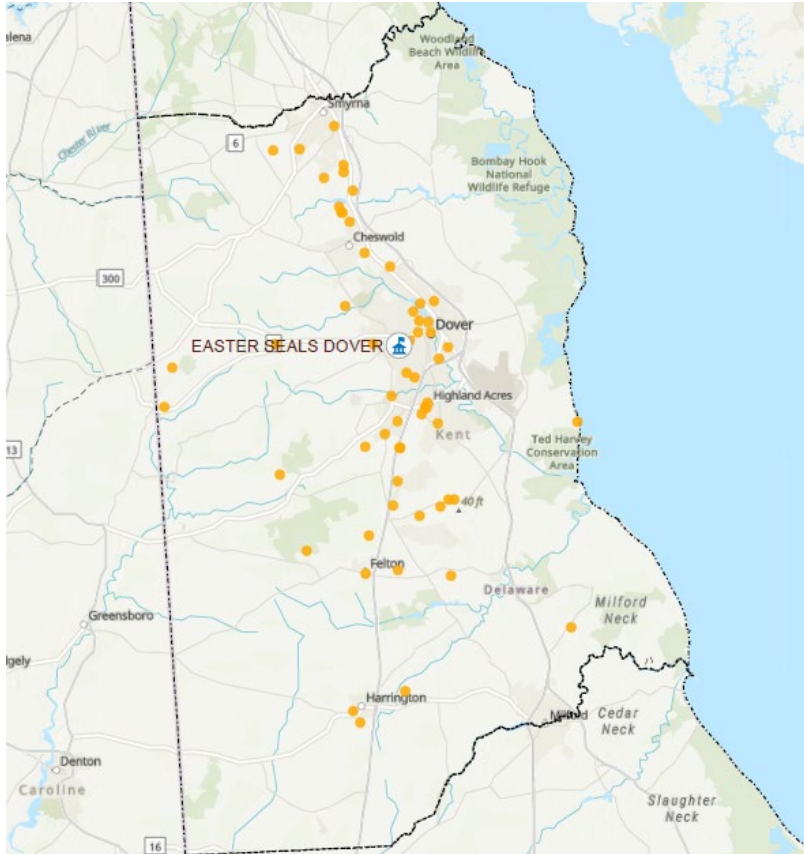
# Paratransit



## Details

- 🚌 Week of October 13
- 🚌 123 Clients/124 Addresses
- 🚌 1,005 Trips to/from Chimes Newark
  - 🚌 0 ADA Trips
  - 🚌 1,005 Demand Response
- 🚌 Average of 9.3 miles per trip

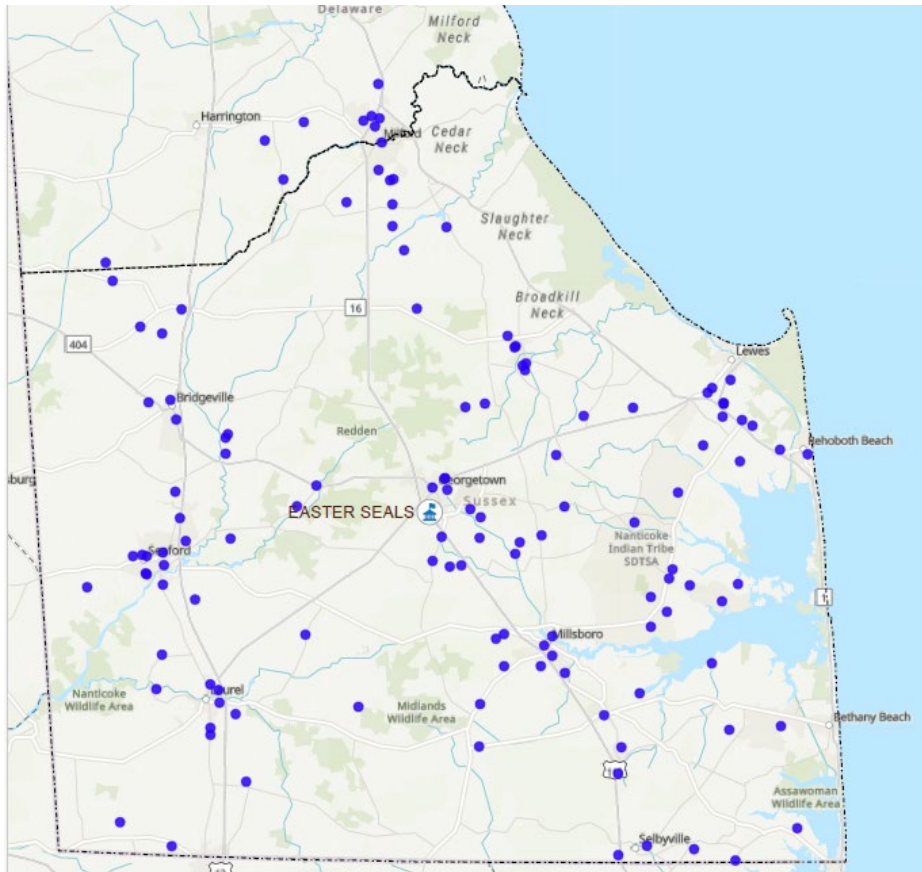
# Paratransit



## Details

- 🚌 Week of October 13
- 🚌 56 Clients/62 Addresses
- 🚌 417 Trips to/from Easter Seals Dover
  - 🚌 258 ADA Trips
  - 🚌 159 Demand Response
- 🚌 Average of 11.47 miles per trip

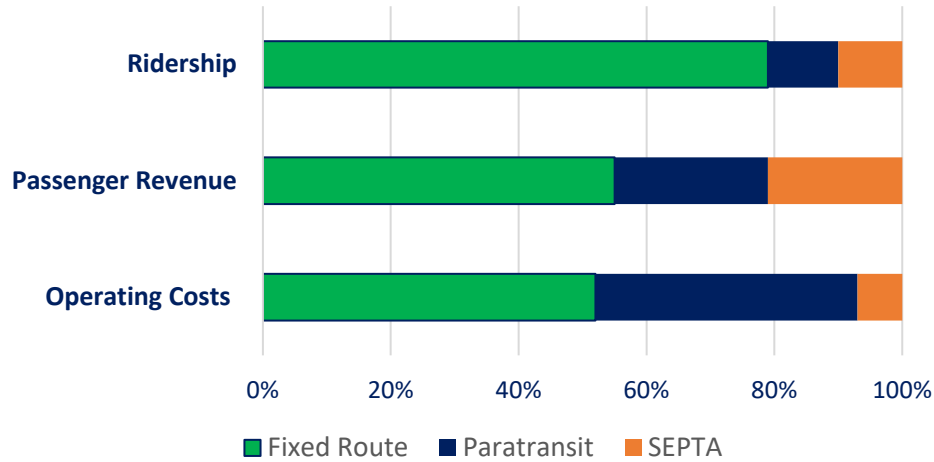
# Paratransit






## Details

- 🚌 Week of October 13
- 🚌 126 Clients/128 Addresses
- 🚌 957 Trips to/from Easter Seals Georgetown
  - 🚌 519 ADA Trips
  - 🚌 438 Demand Response
- 🚌 Average of 13.55 miles per trip

# Cost Analysis



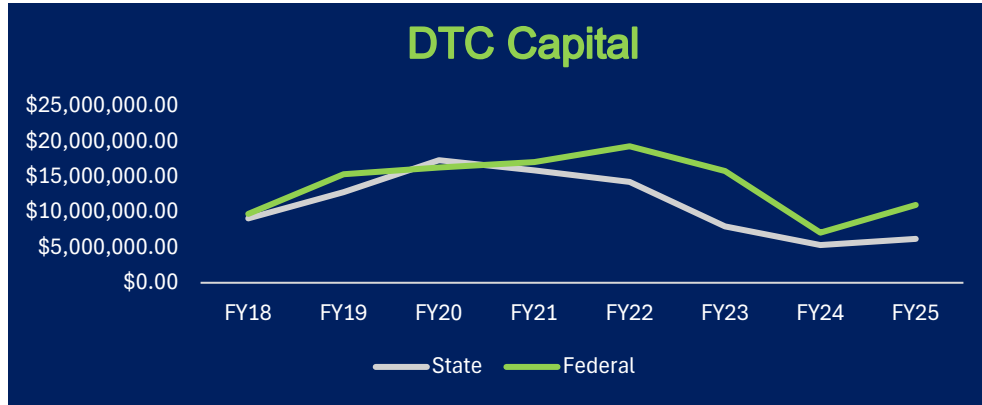
## Quick Facts...

-  Paratransit Revenue Miles are down 12.5% since FY16 however costs are up nearly 20%.
  
-  Fixed Route miles are up 15% since FY16 but operating costs is outpacing that at a 60% increase over 10 years.
  
-  Pre-Pandemic SEPTA revenue recovered nearly 50% of our total rail expenses, that number now floats around 25%.

## FY25 largest operating cost categories by percentage of total operating expenses

-  Labor and Benefits ----- 66.1%
-  Purchased Transportation -----11.8%
-  Contract Services ----- 4.8%
-  Fuel----- 4.5%
-  Repair Parts----- 4.3%

# Capital Expenditures



## Future CTP Estimate

FY	State	Federal
FY26	\$ 10,907,368	\$ 42,717,251
FY27	\$ 9,349,669	\$ 38,928,082
FY28	\$ 8,114,600	\$ 44,345,105

### Projects funded in the current CTP

- ☰ Resorts Park and Ride Improvements
- ☰ Fairplay Station Improvements
- ☰ Beech St. Maintenance Building
- ☰ Wilmington DTC Maintenance Facility
- ☰ Dover Transit Center Solar Panels
- ☰ Mid-County Driver Training Facility

### Future projects not yet funded in CTP

- ☰ NRTC Completion
- ☰ Georgetown Transit Hub
- ☰ Western Sussex Paratransit maintenance facility
- ☰ Replacement of Monroe Street garage




### Future Replacement Bus Purchases

- ☰ FY 26
  - ☰ 7 Paratransit
  - ☰ 13 Fixed Route
- ☰ FY27
  - ☰ 53 Paratransit
  - ☰ 33 Fixed Route
- ☰ FY28
  - ☰ 52 Paratransit
  - ☰ 16 Fixed Route

# Personnel Statistics

DTC Vacancies	Vacant	Active	Total	Percent
Fixed Route	27	291	318	8.5%
Paratransit	13	313	326	4.0%
Service Maintenance	11	73	84	13.1%
Skilled	10	94	104	9.6%
Administration	26	296	322	8.1%
<b>Total</b>	87	1,067	1,154	7.5%

1st Qtr. FY26 Turnover	Turnover Rate (Excludes Retirements)
Admin	1.35%
NCC Fixed Rt Op	3.09%
NCC Para Spec	2.17%
KC Fixed Rt Op	0.00%
KC Para Spec	1.67%
SC Para Spec	1.32%
NCC Maint	3.28%
MidCty Maint	0.00%
KC Maint	5.13%
SC Maint	10.71%
<b>Total</b>	2.26%

-  Vacancy rate and turnover data are from the first quarter of FY26.
-  Vacant positions have a direct impact on overtime costs, on-time performance and timely maintenance.
-  Turnover Rate impacts company performance across the board due to time it takes to fully train and time it takes to interview and hire new employees.



# Dart Reimagined Overview



By the end of 2028, the plan will introduce DART Connect services to the following areas

**Over the next 3 years DART reimagined implementation will be noticed throughout the State**

- ☰ Number of alignment and frequency modifications to improve customer service and efficiency
- ☰ Discontinue inefficient low ridership routes/trips
- ☰ Add fixed routes in conjunction with the shift to micro transit to maximize service to Delaware residents
- ☰ Introduce DART's on demand transit service "DART Connect" to several areas which will be more convenient for riders and more efficient for DTC

## New Castle County

- ☰ Wilmington Manor
- ☰ Naamans
- ☰ Churchmans Crossing-Pike Creek

## Kent County

- ☰ Smyrna
- ☰ North Dover
- ☰ South Dover
- ☰ Harrington-Milford

## Sussex County

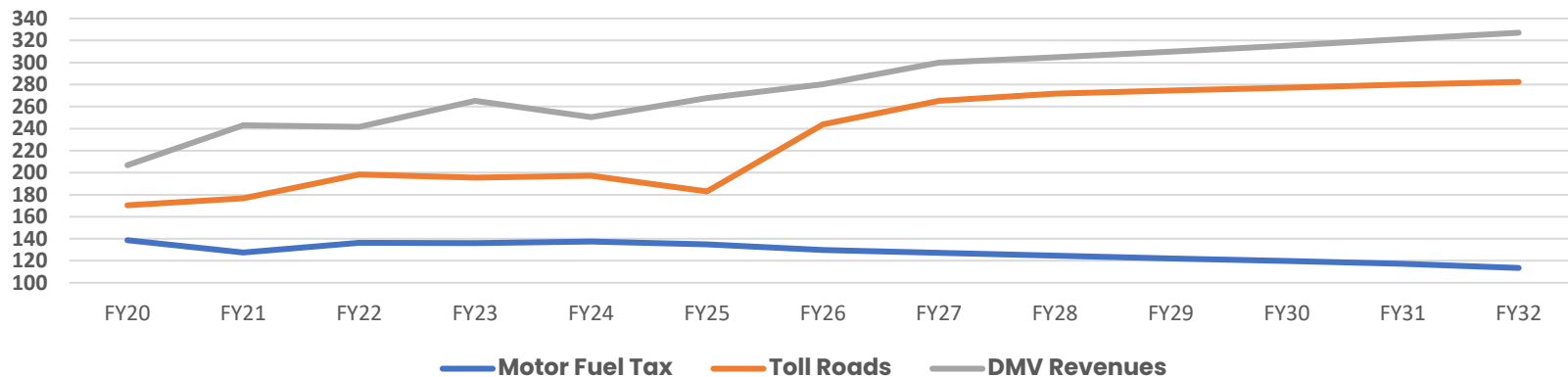
- ☰ Harrington-Milford
- ☰ Blades-Seaford



# Revenue Data Overview

# Revenue History/Forecast FY20–FY32

							FORECASTED - October 2025						
Revenues	FY20	FY21	FY22	FY23	FY24	FY25*	FY26	FY27	FY28	FY29	FY30	FY31	FY32
<b>Motor Fuel Tax</b>	<b>138.7</b>	<b>127.4</b>	<b>136.4</b>	<b>136.1</b>	<b>137.4</b>	<b>135.0</b>	<b>129.7</b>	<b>127.1</b>	<b>124.6</b>	<b>122.1</b>	<b>119.7</b>	<b>117.3</b>	<b>113.5</b>
<b>Toll Roads</b>	<b>170.4</b>	<b>176.6</b>	<b>198.4</b>	<b>195.4</b>	<b>197.1</b>	<b>182.9</b>	<b>244.0</b>	<b>265.1</b>	<b>271.7</b>	<b>274.5</b>	<b>277.2</b>	<b>280.0</b>	<b>282.4</b>
<b>DMV Revenues</b>	<b>206.8</b>	<b>243.0</b>	<b>241.6</b>	<b>265.2</b>	<b>250.4</b>	<b>267.9</b>	<b>280.3</b>	<b>299.9</b>	<b>304.8</b>	<b>309.9</b>	<b>315.4</b>	<b>321.2</b>	<b>327.1</b>
	<b>515.9</b>	<b>547.0</b>	<b>576.4</b>	<b>596.7</b>	<b>584.9</b>	<b>585.8</b>	<b>654.0</b>	<b>692.1</b>	<b>701.1</b>	<b>706.5</b>	<b>712.3</b>	<b>718.5</b>	<b>723.0</b>



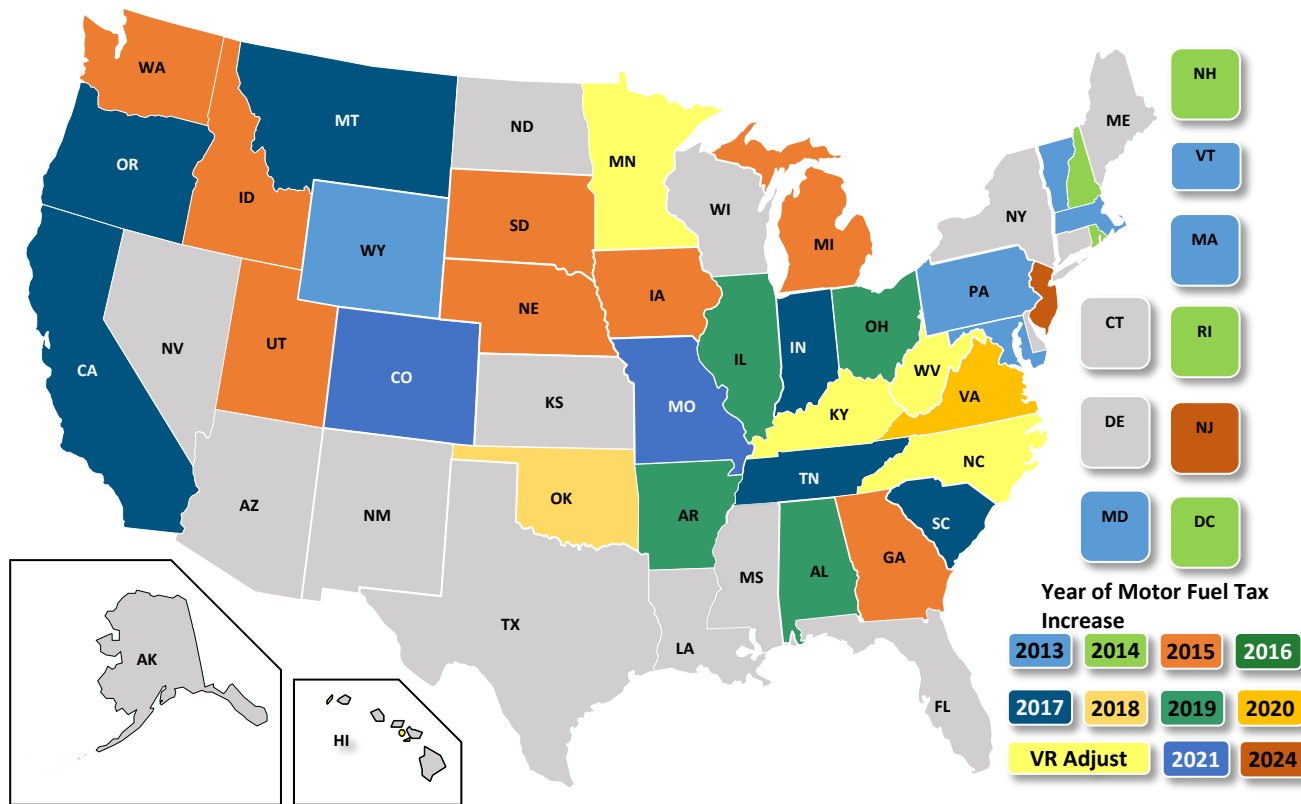
\* Unaudited

# State & Local Funding Update

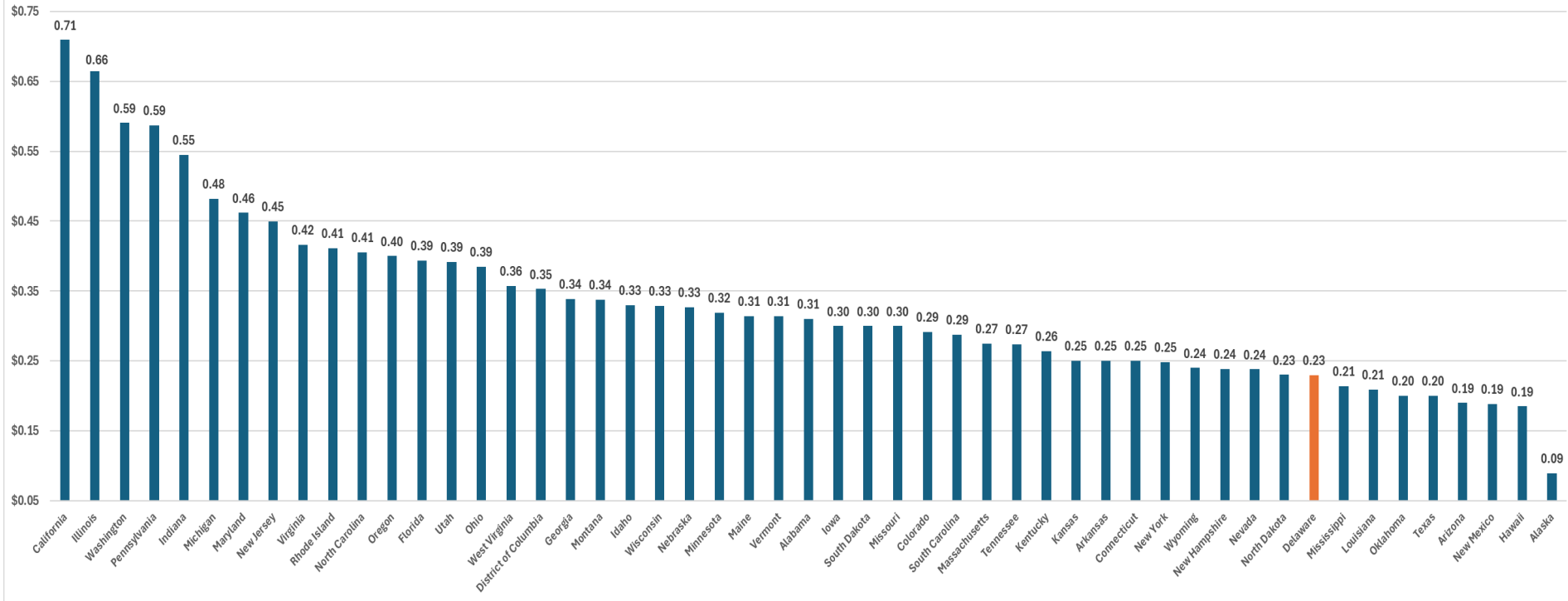
**Carolyn Kramer Simons**  
Senior Director, State Funding Policy  
ARTBA-TIAC

AASHTO Committee on Funding and Finance  
February 6, 2025

# 34 States Approved/Adjusted State Motor Fuel Tax Increases 2013-2024



# Motor Fuel Tax Rates by State



# Variable-Rate State Gas Taxes - Types



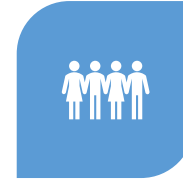
**CONSUMER PRICE  
INDEX  
(10 STATES)**



**AVERAGE  
WHOLESALE PRICE  
OF FUEL  
(10 STATES + DC)**



**MEETING STATE'S  
TRANSPORTATION  
FUND NEEDS  
(2 STATES)**



**CHANGES IN  
POPULATION  
(1 STATE)**



**CORPORATE  
AVERAGE FUEL  
ECONOMY  
(1 STATE)**



**NATIONAL/LOCAL  
HIGHWAY  
CONSTRUCTION  
COST INDEX (3  
STATES)**



**GENERAL SALES  
TAX ON FUEL  
PURCHASES  
(4 STATES)**



# Electric Vehicle Registration Fees - Overview

**39**

States have an electric vehicle fee.

**\$50 – \$290**

Range of fees for passenger vehicles

**11**

States index fees.

**4**

States with sliding scale fees based on vehicle weight/class/use.

**18**

States have plug-in hybrid vehicle fees.

## Most annual registration fees

- South Carolina - biennial fee
- Virginia – Highway Use Fee OR Mileage Choice program
- Annual fee, collected multiple years at once: Texas, New Jersey, Maryland





# Virginia's Fuel-Efficient Vehicle Fee (HUF)



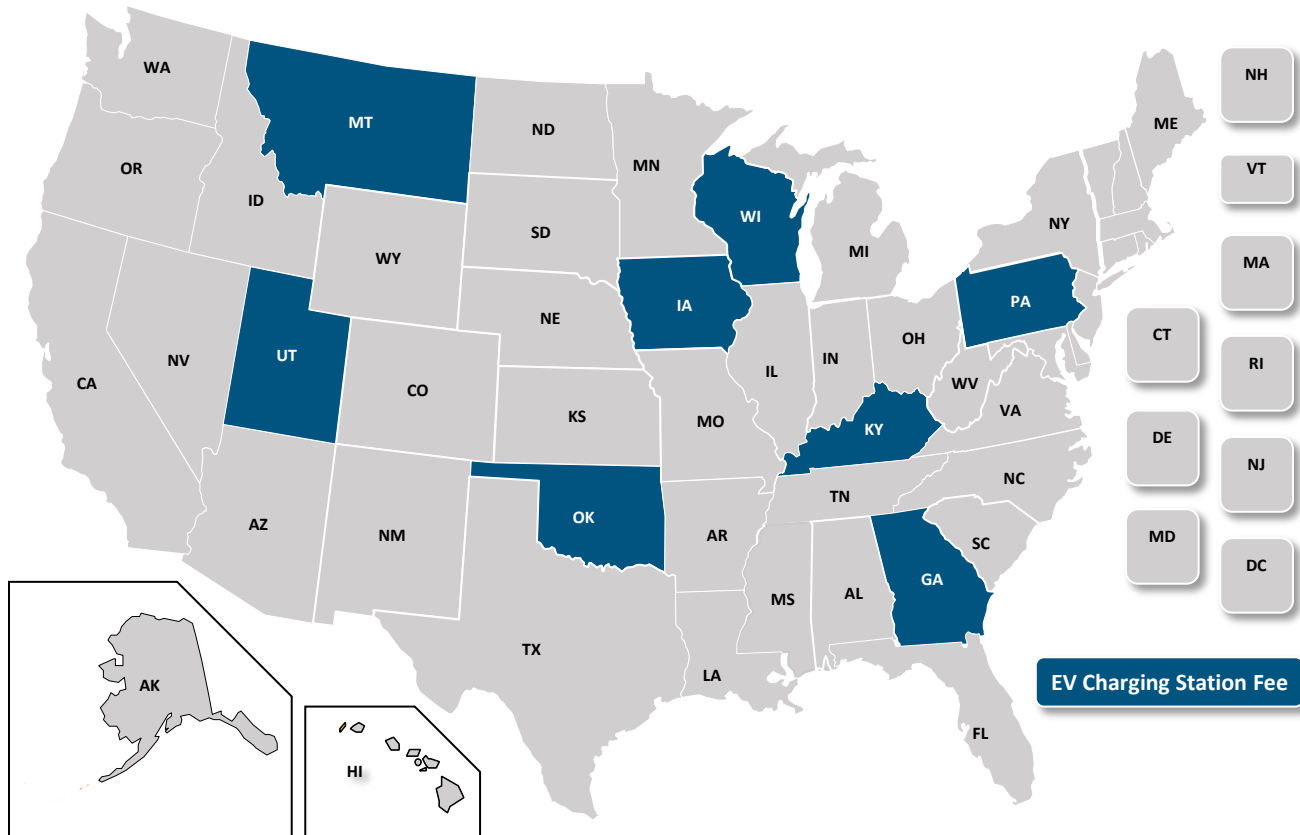
**Highway Use Fee** =  $[(11,600 \text{ average miles traveled} * \text{fuels tax rate}) / 23.7] - (11,600 \text{ average miles traveled} * \text{fuels tax rate}) / \text{vehicle's MPG rating}] * .85$

## Who pays:

- Fuel-efficient vehicles (vehicle with a combined fuel economy of 25 miles per gallon [MPG] or greater).
- Vehicles produced in a year in which the average combined MPG rating for all vehicles produced in that year is 25 MPG or greater.

*Source: TIAC, "FUEL EFFICIENT VEHICLES: VIRGINIA'S HIGHWAY USE FEE," Feb. 2024*

# 8 States Have Enacted an EV Charging Station Tax or Fee



Source: TIAC, "ELECTRIC VEHICLE EXCISE TAX MODEL LANGUAGE," April 2024

# Other Recurring Revenues

**TNC Fees**

**18 states + DC**

**Retail Delivery Fees**

**2 states**

**Tolling**

**19 states**

**“Sin” Taxes**

**Local or Regional Taxes**

**Vehicle Sales Taxes**

**19 states**

# 2025 Trend Predictions



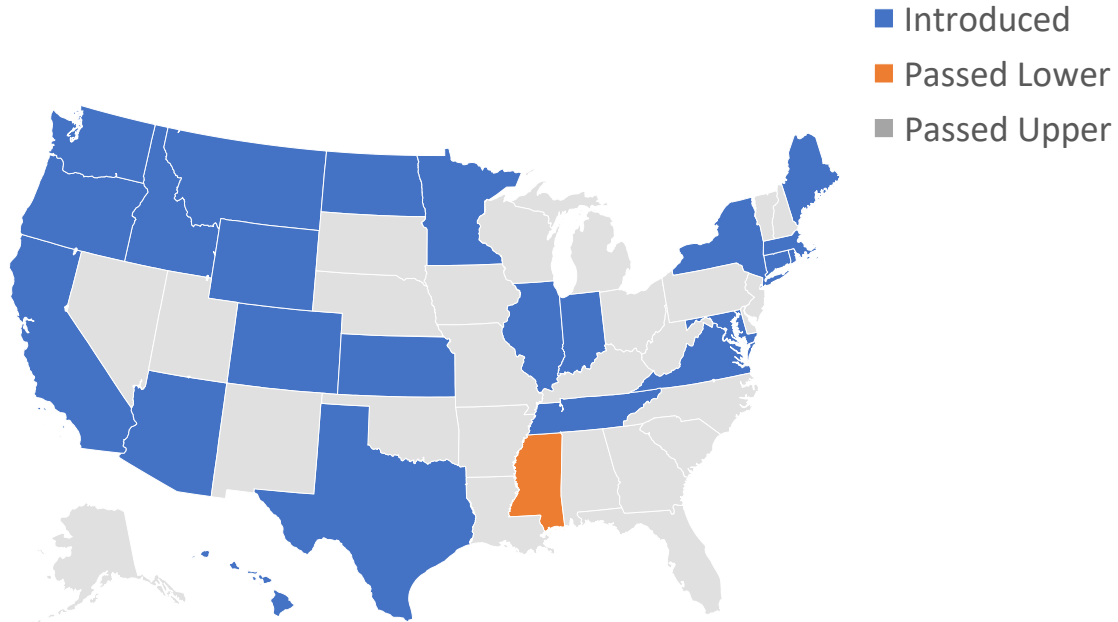
**“Cleaning  
up” related  
taxes and  
fees**

**Diversifying  
revenue  
streams**

**Long-term  
recurring  
revenue**

**Electric  
vehicle-  
related taxes  
and fees**

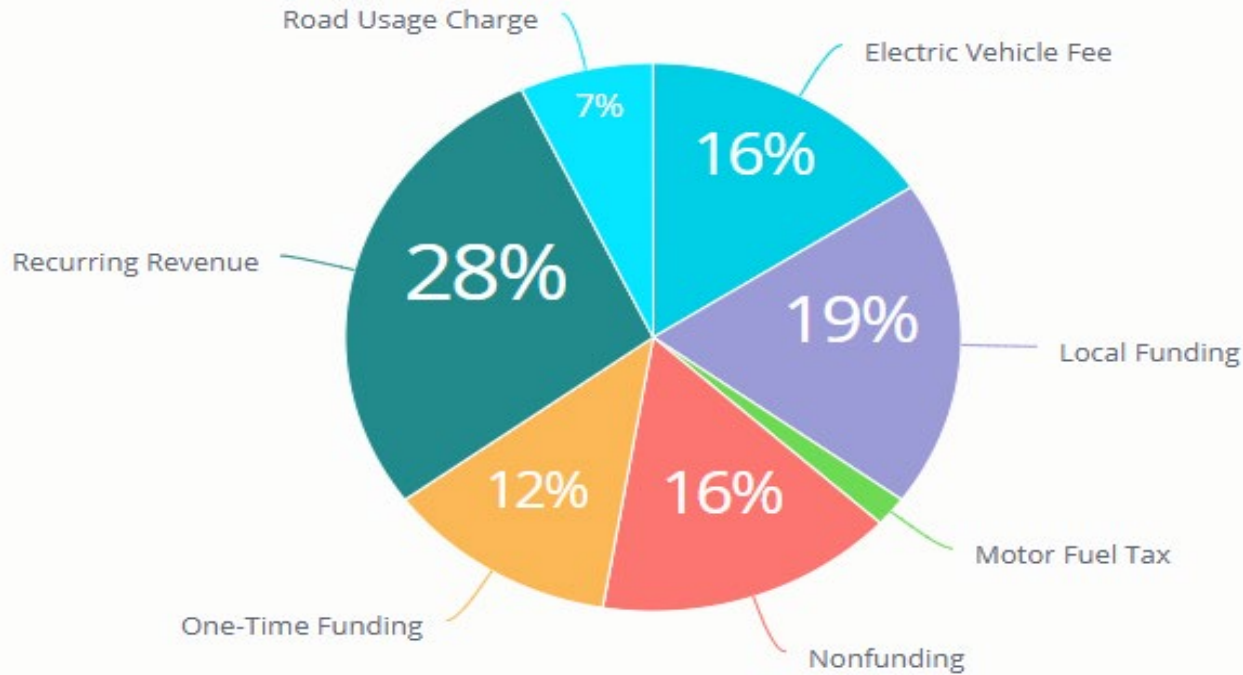
# 2025: 55 Bills Introduced in 24 States To-Date



Powered by Bing  
© GeoNames, Microsoft, TomTom

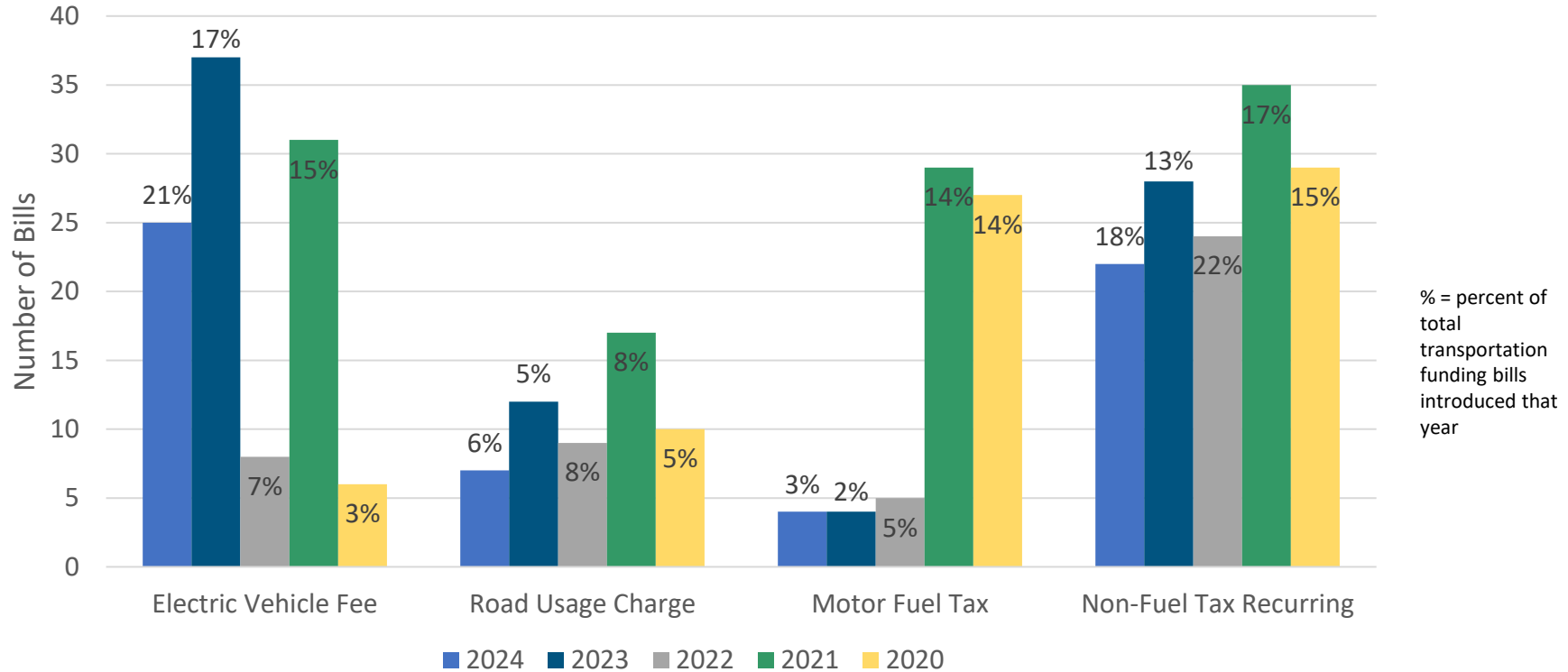
Source: ARTBA's Transportation Investment Advocacy Center January 2025 *State Funding Initiatives Report*.

# 2025: 55 Bills Introduced in 24 States To-Date



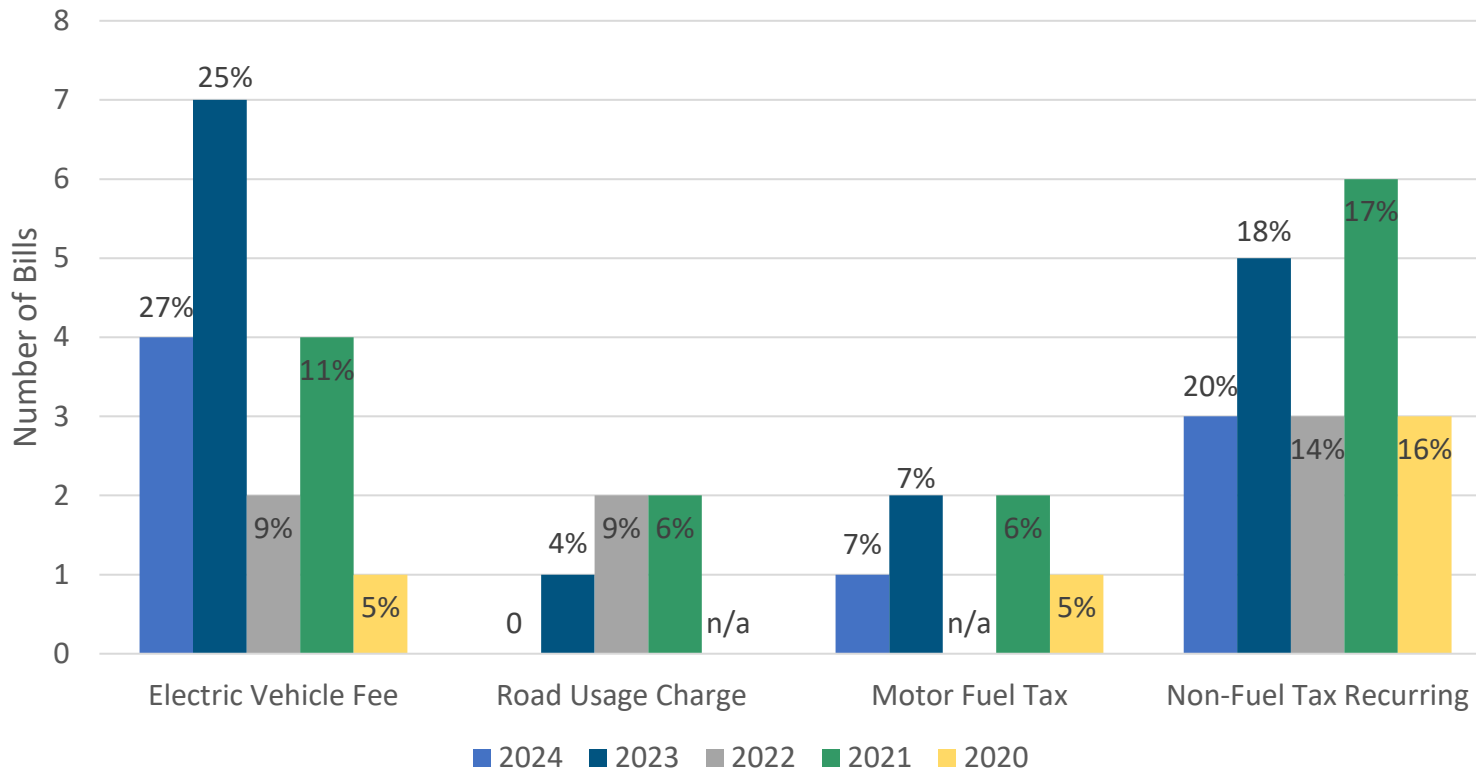
Source: ARTBA's Transportation Investment Advocacy Center January 2025 *State Funding Initiatives Report*.

# Transportation Funding Bills Introduced 2020-2024



Source: ARTBA-TIAC State Legislation Reports 2020-2024

# Transportation Funding Bills Approved 2020-2024



% = percent of total transportation funding bills approved that year

Source: ARTBA-TIAC State Legislation Reports 2020-2023



**Carolyn Kramer Simons**  
Senior Director, State Funding Policy  
American Road & Transportation Builders Association  
[ckramer@artba.org](mailto:ckramer@artba.org)  
202-289-4434



**QUESTIONS &  
COMMENTS**

# Public Comment



**THANK YOU!**



<https://linktr.ee/delawaredot>