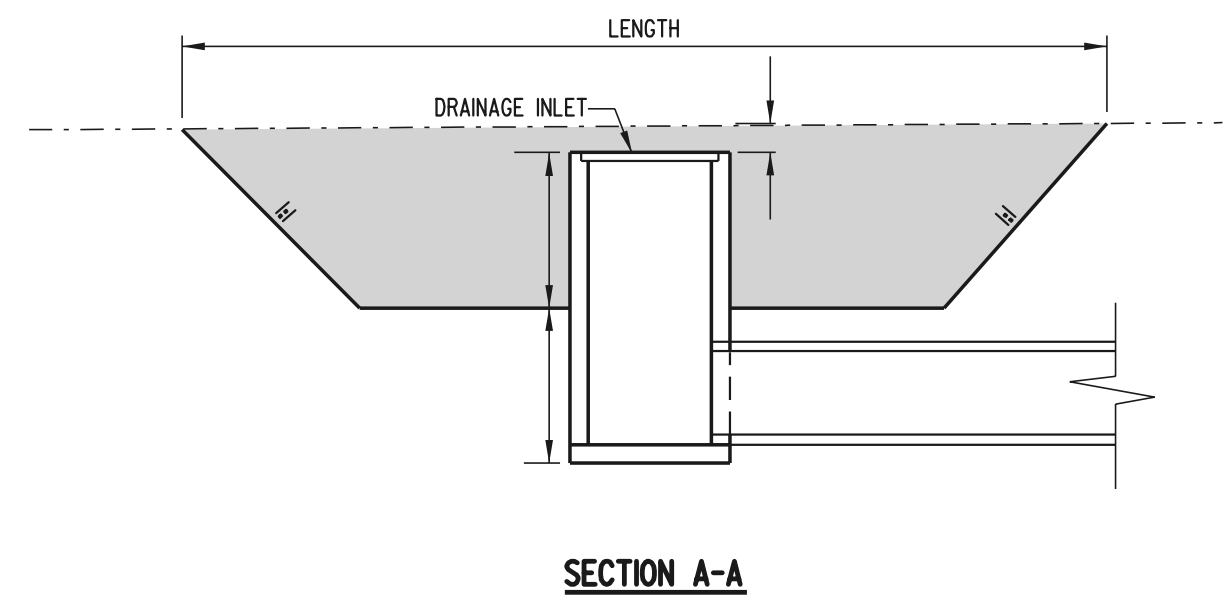
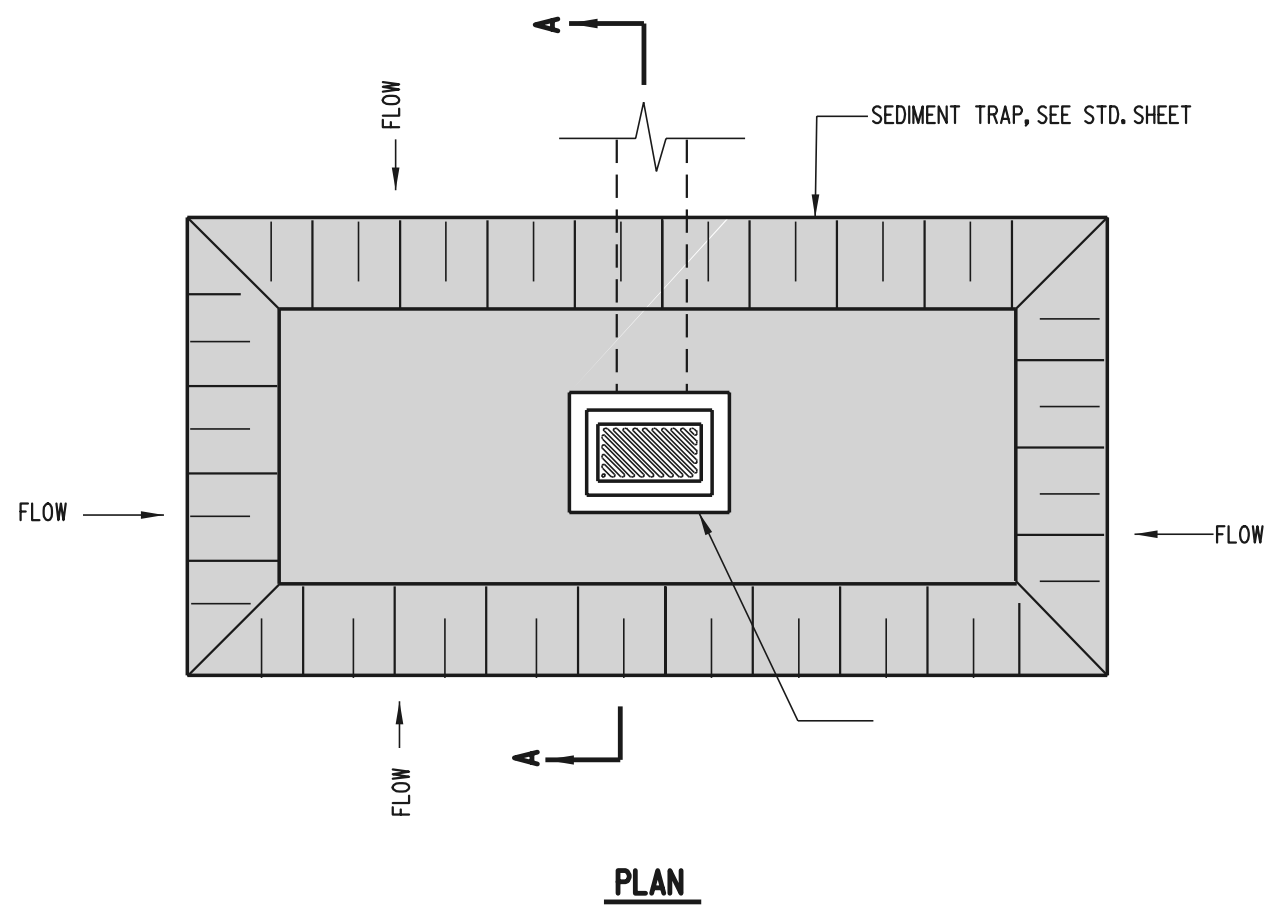


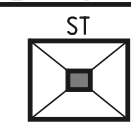
SCALE : N.T.S.



NOTES: 1). THE WORK SHALL CONSIST OF THE CONSTRUCTION OF A SEDIMENT TRAP AROUND A DRAINAGE INLET TO ALLOW SEDIMENTATION TO OCCUR BEFORE RUNOFF ENTERS THE DRAINAGE INLET.

3). THE DIMENSIONS OF THE DRAINAGE INLET SEDIMENT TRAP ARE TO BE AS INDICATED ON THE PLANS OR AS DIRECTED BY THE ENGINEER.

PLAN SYMBOL



DELAWARE
DEPARTMENT OF TRANSPORTATION

SEDIMENT TRAP, USING DRAINAGE INLET AS OUTLET

STANDARD NO.	E-7 (97)	SHT. 1	OF 1
--------------	----------	--------	------

APPROVED	_____
CHIEF ENGINEER	DATE
RECOMMENDED	_____
DESIGN ENGINEER	DATE