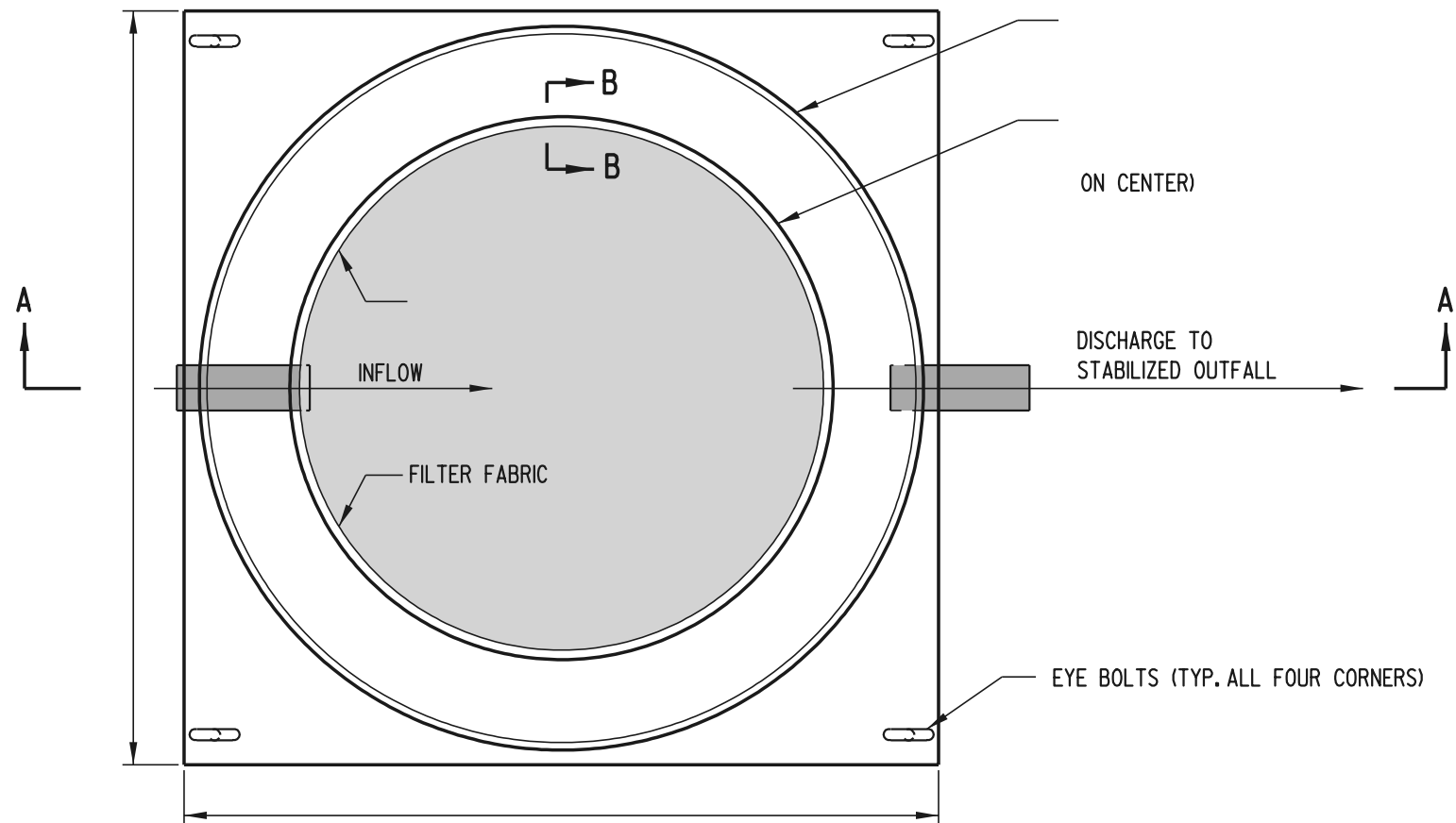
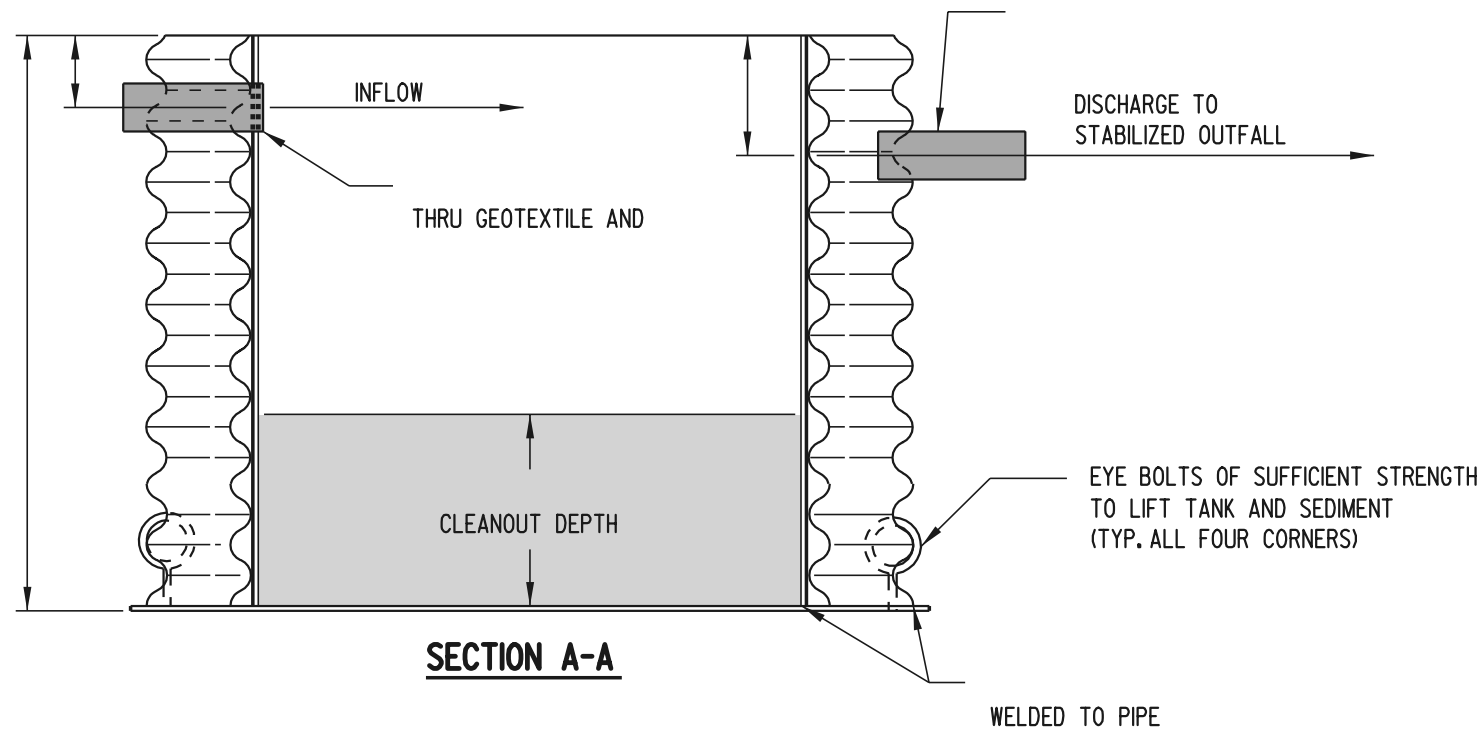


SCALE :

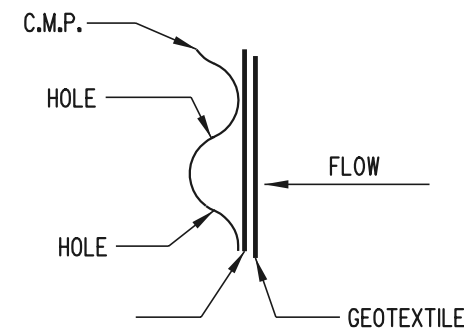


PLAN

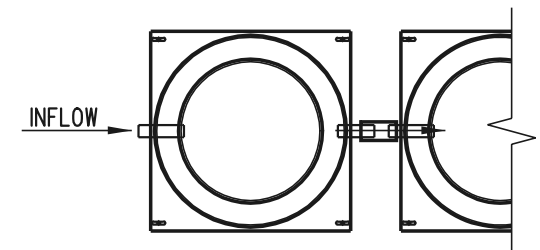
- NOTES:**
- 1). THE SEDIMENT TANK IS TO BE USED ON SITES WHERE SPACE IS LIMITED, WHERE DIRECT DISCHARGE OF SEDIMENT LADEN WATER TO STREAM AND STORM DRAINAGE SYSTEMS IS NOT PERMITTED.
 - 2). THE FOLLOWING FORMULA SHOULD BE USED IN DETERMINING THE STORAGE VOLUME OF THE SEDIMENT
 - 3). AN EXAMPLE OF A TYPICAL SEDIMENT TANK IS SHOWN. OTHER CONTAINER DESIGNS MAY BE USED IF THE STORAGE VOLUME IS ADEQUATE AND APPROVAL IS OBTAINED FROM THE STORMWATER ENGINEER.
 - 4). ACTUAL HYDRAULIC DESIGN SHALL BE SUBMITTED TO THE ENGINEER FOR APPROVAL PRIOR TO USE.



SECTION A-A



SECTION B-B



CONNECTION DETAIL
CONNECTION OF MULTIPLE
TANKS IN SERIES

PLAN SYMBOL



DELAWARE
DEPARTMENT OF TRANSPORTATION

PORTABLE SEDIMENT TANK

STANDARD NO.

E-24 (98)

SHT.

1

OF

1

APPROVED

CHIEF ENGINEER

DATE

RECOMMENDED

DESIGN ENGINEER

DATE