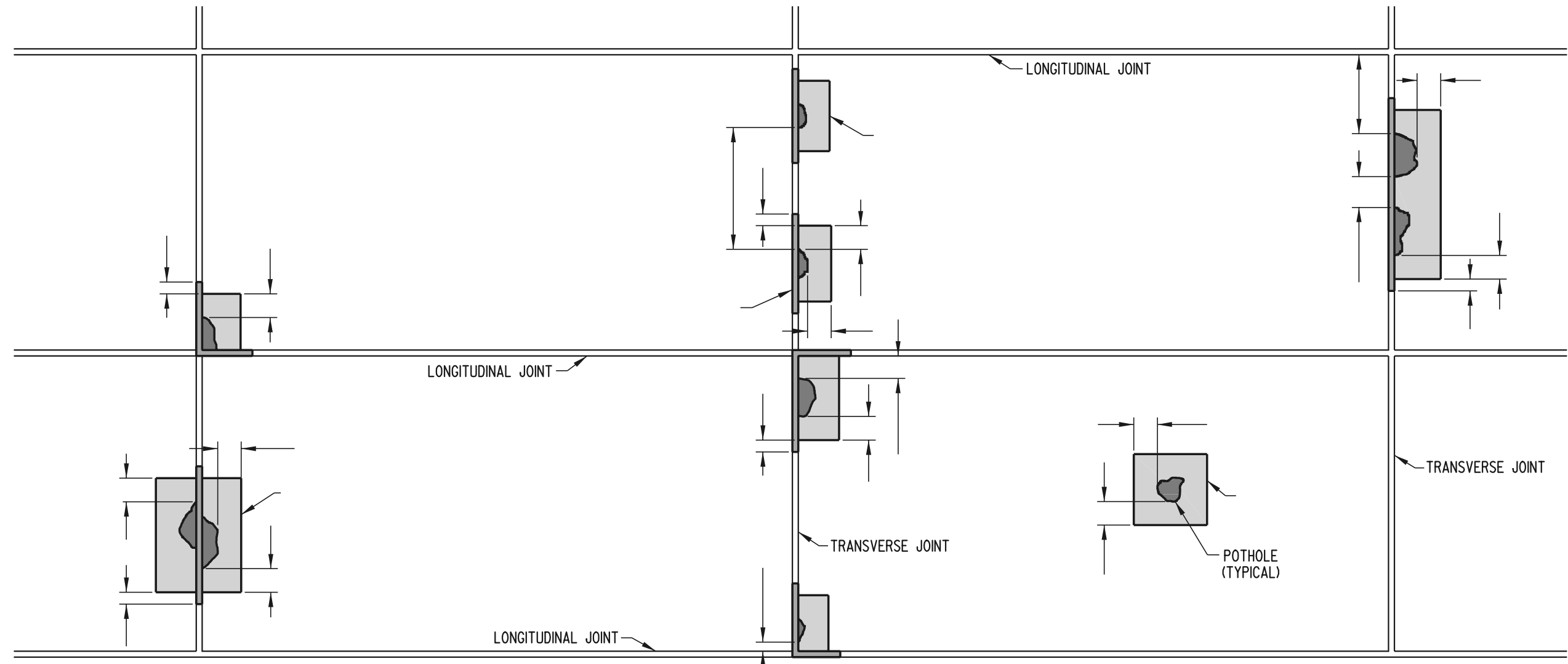
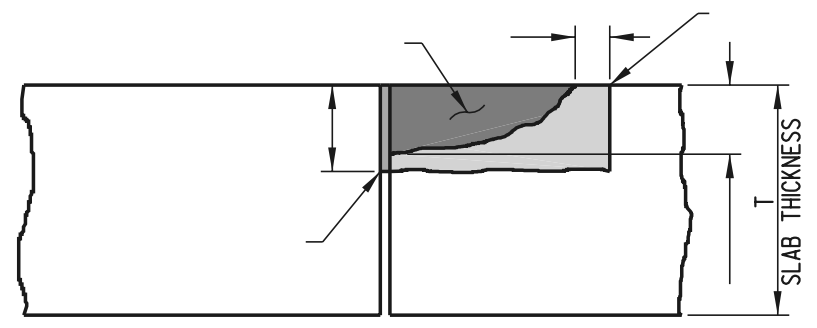


SCALE :

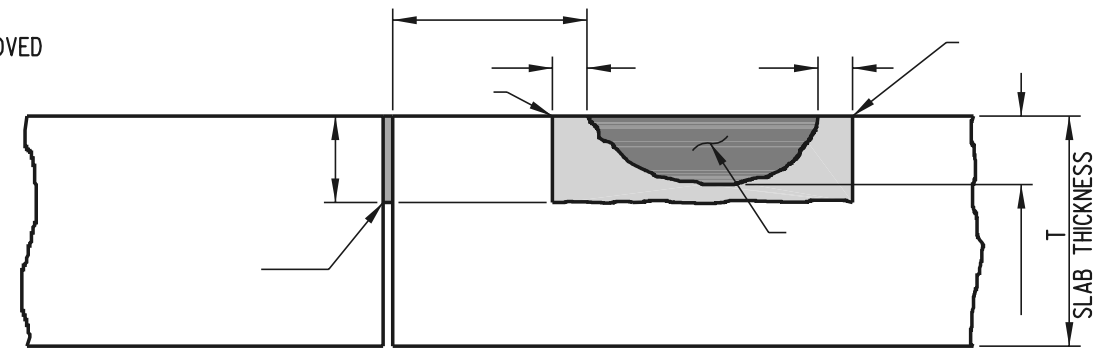


PLAN

NOTE: CLOSED CELL POLYETHYLENE FOAM SHALL BE THE SAME WIDTH AS THE JOINT AND 125 mm IN DEPTH. AFTER THE CONCRETE IN THE REPAIR AREA HAS ACHIEVED THE SPECIFIED STRENGTH, THE FOAM SHALL BE REMOVED AND REPLACED WITH BACKER ROD AND HOT-POUR SEALANT MEETING ALL APPLICABLE STANDARD DETAILS AND SPECIFICATIONS.




SECTION WITH SPALL ADJACENT TO JOINT



SECTION WITH SPALL NOT ADJACENT TO JOINT

NOTE: -

PARTIAL DEPTH PATCH

 DELAWARE DEPARTMENT OF TRANSPORTATION	P.C.C. PAVEMENT PATCHING			APPROVED <i>Lynne M. Huchanoff</i> 12/30/98 <small>CHIEF ENGINEER DATE</small>
	STANDARD NO. P-02 (99)	SHT. 5	OF 5	RECOMMENDED <i>Raymond D. Richter</i> 12/17/98 <small>DESIGN ENGINEER DATE</small>