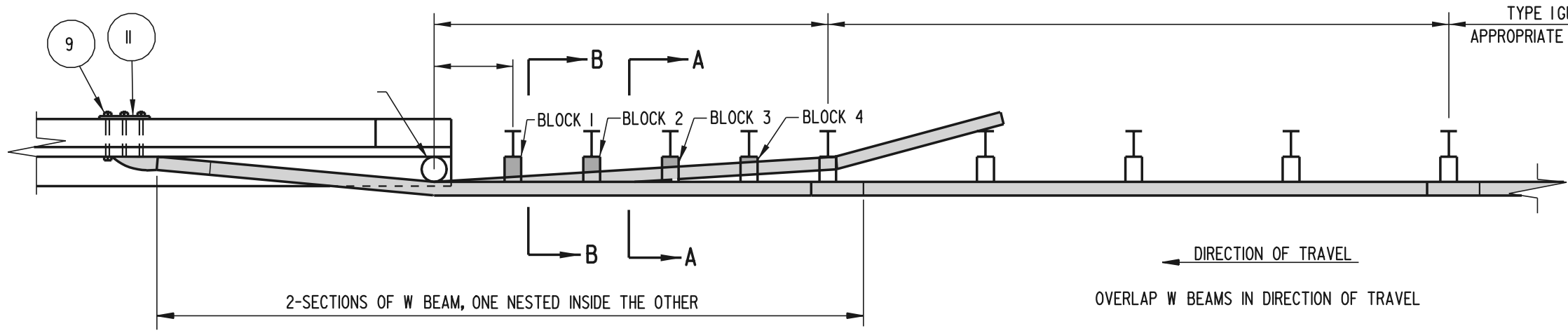
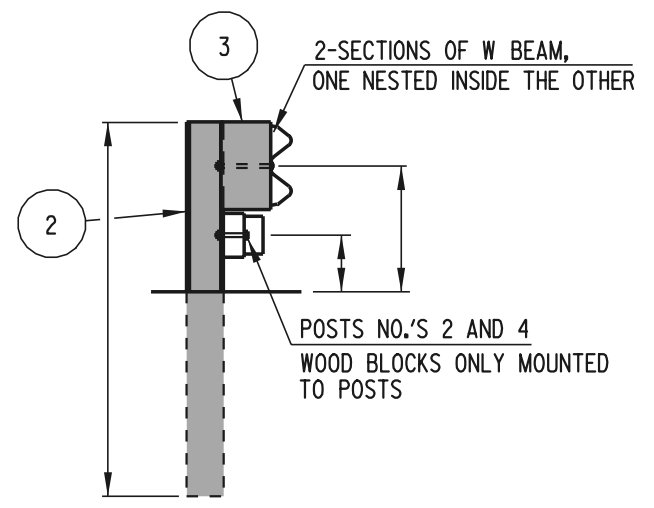


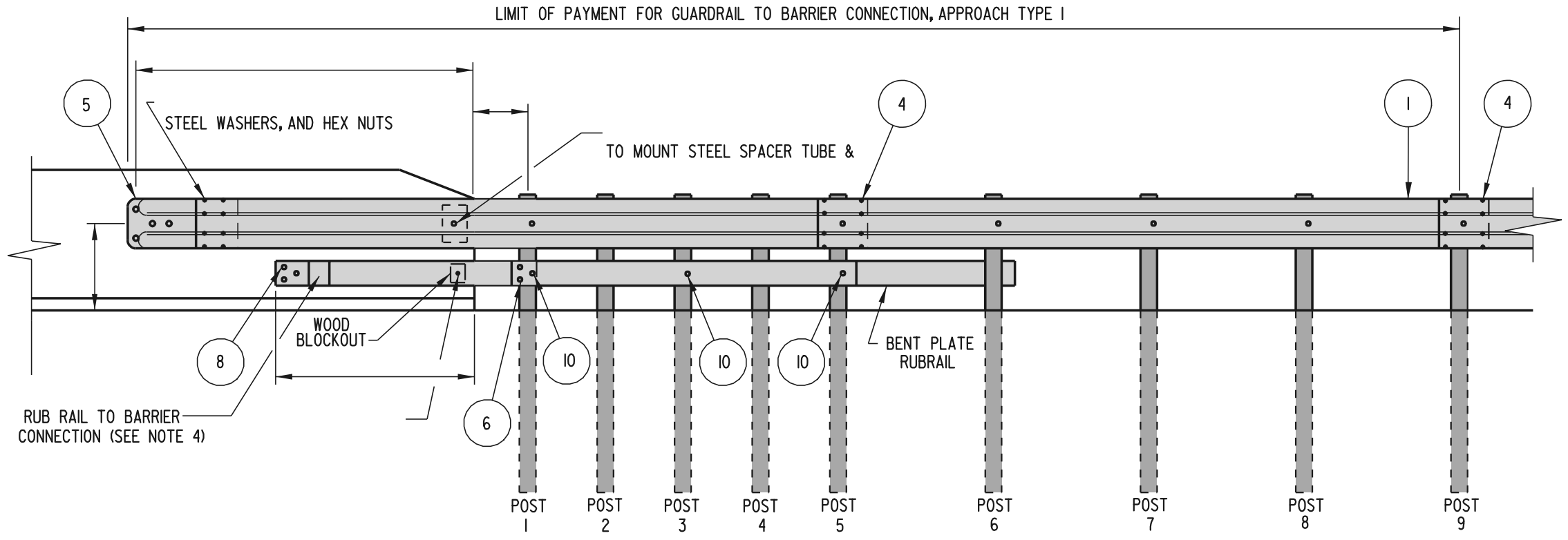
SCALE :



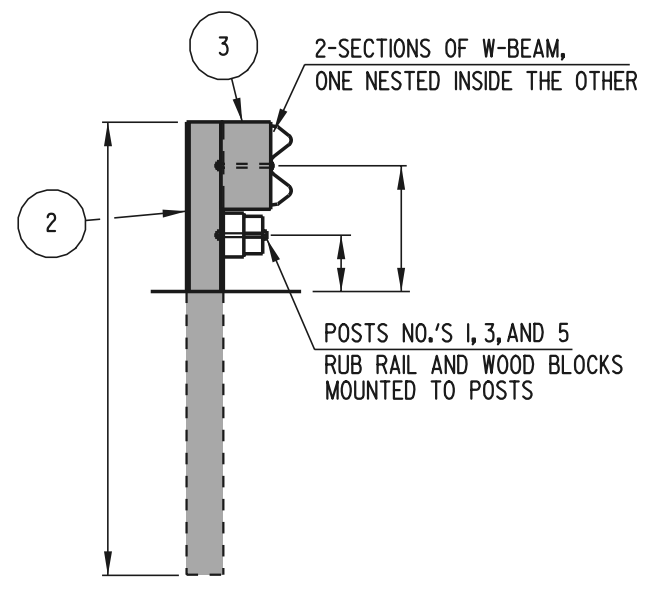
**PLAN**



**SECTION A-A**



**ELEVATION**



**SECTION B-B**

- NOTES:**
- 1). W BEAM IS NOT BOLTED TO POSTS 2 THROUGH 4.
  - 2). RUB RAIL IS BOLTED ONLY AT POSTS 3 AND 5.
  - 3). POSTS 1 THROUGH 6 REQUIRE AN ADDITIONAL HOLE TO ATTACH LOWER WOOD BLOCKS AND/OR RUBRAIL AND WOOD BLOCK.
  - 4). USE APPROPRIATE EPOXY BOLT ANCHORS TO REDUCE THE CHANCE OF SPLITTING THE CONCRETE. BETWEEN BOLT HEADS AND RUB RAIL.
  - 5). ALL HOLES SHALL BE DRILLED PRIOR TO GALVANIZING.
  - 6). PLACE REFLECTORIZED WASHER EVERY FIFTH POST.
  - 7). APPROVED CONCRETE INSERTS MAY BE USED IN NEW CONSTRUCTION TO ATTACH TERMINAL CONNECTOR TO PARAPET.

<b>DELAWARE</b> <b>DEPARTMENT OF TRANSPORTATION</b>	<b>GUARDRAIL TO BARRIER CONNECTION, APPROACH TYPE 1</b>			<b>APPROVED</b>
	STANDARD NO. <b>B-7 (2000)</b>	SHT. <b>1</b>	OF <b>3</b>	<small>CHIEF ENGINEER</small> _____ <small>DATE</small> _____ <b>RECOMMENDED</b> <small>DESIGN ENGINEER</small> _____ <small>DATE</small> _____