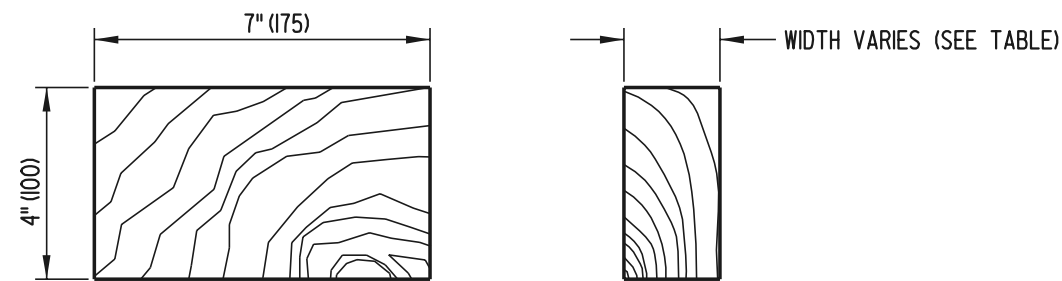


ELEVATION

RIGHT SIDE

WOOD BLOCKOUT DETAIL

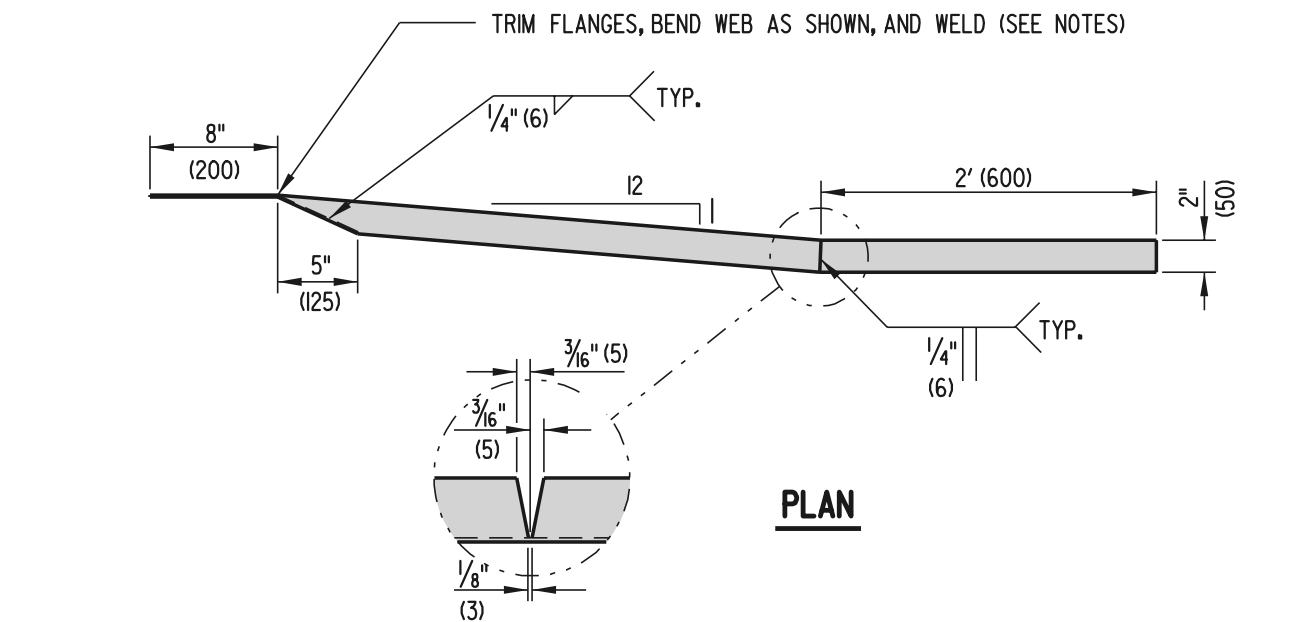


ELEVATION

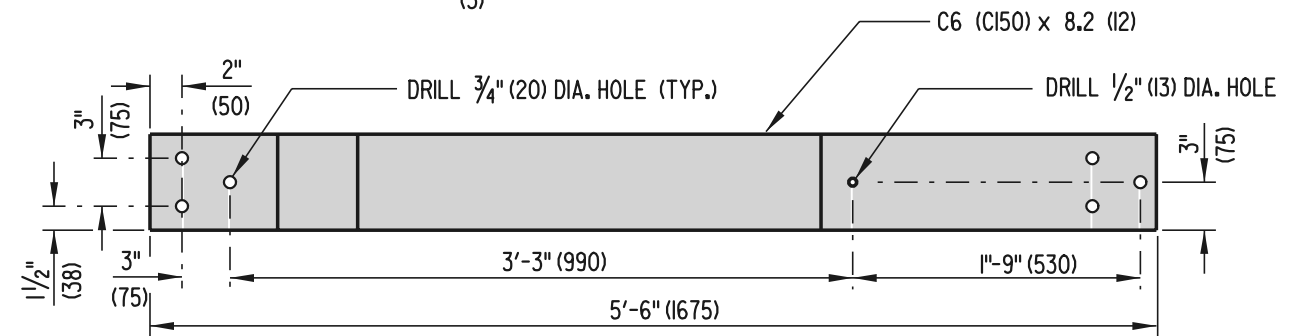
RIGHT SIDE

RUB RAIL WOOD BLOCKS

RUB RAIL WOOD BLOCKS (7" (175) x 4" (100))		
POST NO.	WIDTH	BOLT LENGTH
1	4 1/4" (108)	6" (150)
2	3 1/4" (83)	4" (100)
3	2" (50)	4" (100)
4	1" (25)	2" (50)



PLAN



ELEVATION

RUB RAIL TO BARRIER CONNECTION

- NOTES:**
- 1). THE RUB RAIL TO BARRIER CONNECTION END MUST BE ATTACHED FLUSH WITH THE SLOPED TOE OF THE SAFETY BARRIER. INSTALLATION CAN BE SIMPLIFIED BY FABRICATING OR SHOP TWISTING THE RUB RAIL END TO BE CONSISTENT WITH THE SLOPE OF THE BARRIER, HOWEVER, FIELD BENDING USING HEAT IS PERMITTED.
 - 2). STEEL SPACER TUBE IS SCHEDULE 40 GALVANIZED PIPE, 6" (152) (I.D.) x 9" (229)



DELAWARE
DEPARTMENT OF TRANSPORTATION

GUARDRAIL TO BARRIER CONNECTION, APPROACH TYPE 1

STANDARD NO. B-7 (2001)

SHT. 2 OF 3

APPROVED *Ryan M. Hershberg* 6/18/01
CHIEF ENGINEER DATE

RECOMMENDED *Mehal Alghobari* 6/18/01
DESIGN ENGINEER DATE