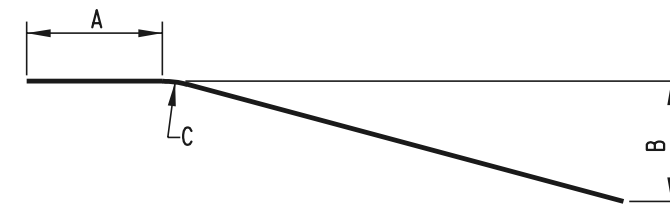
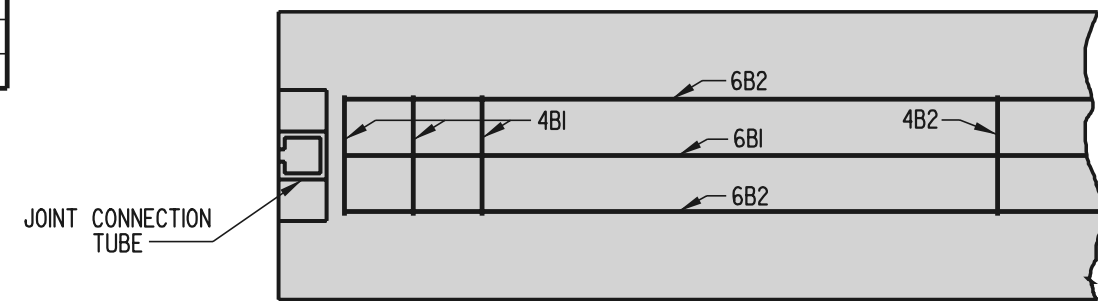


BAR LIST (EACH BARRIER SECTION)								
MARK	SIZE	NUMBER IN EACH SECTION	LENGTH	TYPE	A	B	C	LOCATION
4B1	4 (I3)	6	4' - 7" (I400)	I	5" (I25)	26" (660)	2" (50)	STIRRUPS
4B2	4 (I3)	2	4' - 7" (I400)	I	5" (I25)	26" (660)	2" (50)	STIRRUPS - NOT USED IN END SECTION
4B3	4 (I3)	I	3' - 8" (II20)	I	5" (I25)	20 1/4" (515)	2 13/16" (70)	STIRRUPS - END SECTION ONLY
4B4	4 (I3)	I	2' - 7" (790)	I	5" (I25)	13 3/4" (340)	3 13/16" (I00)	STIRRUPS - END SECTION ONLY
4B5	4 (I3)	I	I' - 3" (380)	I	5" (I25)	6 3/4" (I70)	4 3/4" (I20)	STIRRUPS - END SECTION ONLY
6B1	6 (I9)	I	*	STR.				
6B2	6 (I9)	2	*	STR.				
6B3	6 (I9)	I	II' - 6" (3500)	2	13 1/2" (340)	23 3/4" (600)	5" (I25)	END SECTION ONLY
6B4	6 (I9)	2	II' - 6" (3500)	STR.				

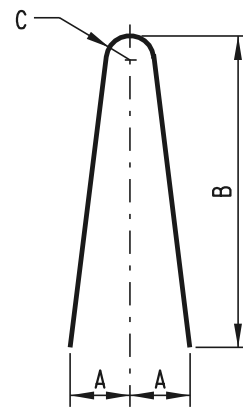
* THE LENGTH OF BARS 6B1 AND 6B2 SHALL BE II" (280) SHORTER IN LENGTH THAN THE NOMINAL SIZE OF THE BARRIER IN WHICH IT IS USED.



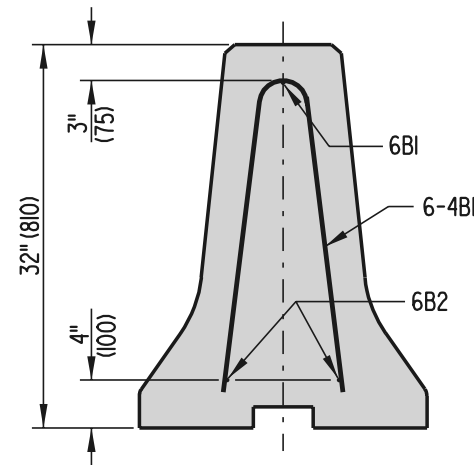
TYPE '2' BAR



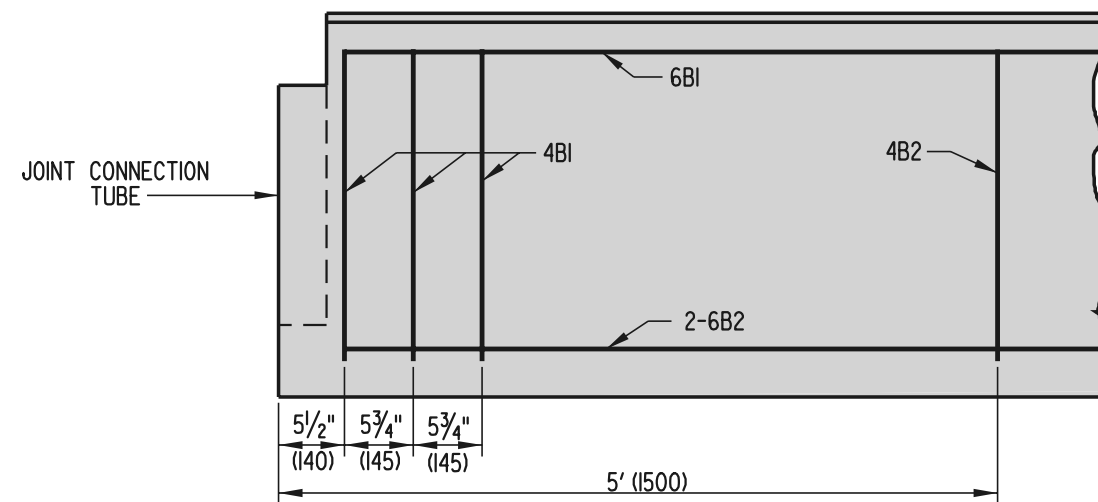
PLAN



TYPE '1' BAR



'F' SHAPE BARRIER SECTION



ELEVATION

TYPICAL REINFORCEMENT DETAILS

ALL DIMENSIONS SHOWN APPLY TO 'F' SHAPE BARRIER SECTION ONLY.



DELAWARE
DEPARTMENT OF TRANSPORTATION

PORTABLE CONCRETE SAFETY BARRIER (F SHAPE)

STANDARD NO. B-15 (2001)

SHT. 4 OF 5

APPROVED *Ryan M. Hershberg* 6/18/01
CHIEF ENGINEER DATE

RECOMMENDED *Mehal Alghobari* 6/18/01
DESIGN ENGINEER DATE