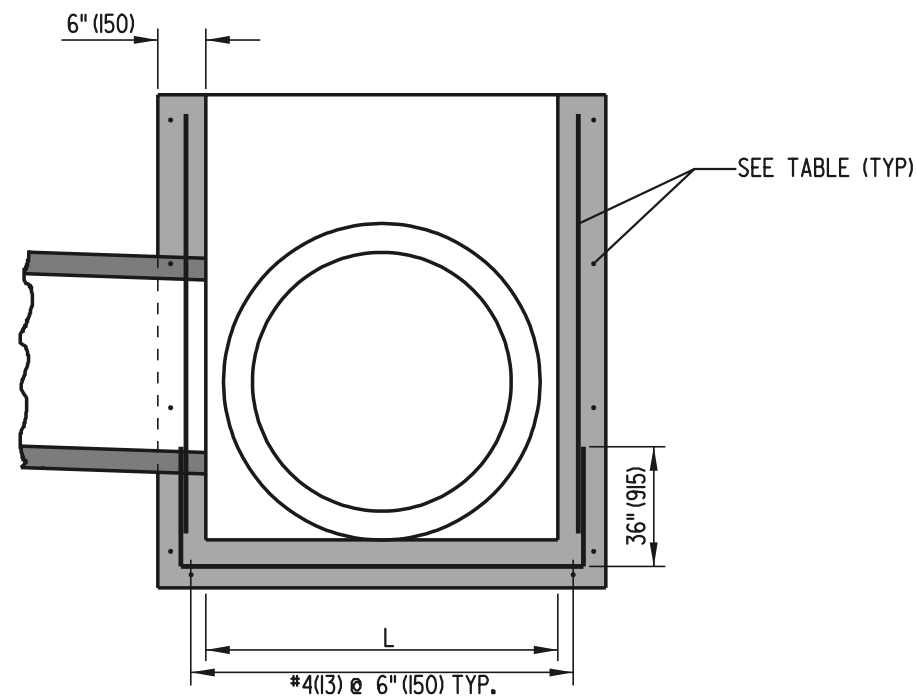


TOP VIEW

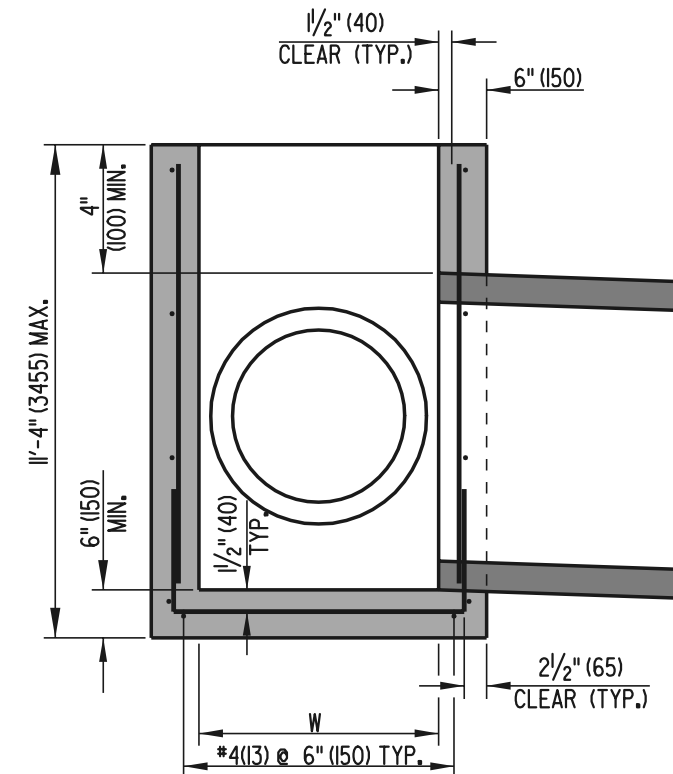
INLET BOX SCHEDULE			
L	W	L TOLERANCE	W TOLERANCE
34" (865)	18" (455)	-1" (25)	-1" (25)
34" (865)	24" (610)	-1" (25)	-1" (25)
48" (1220)	30" (760)	+6" (150)	+6" (150)
48" (1220)	48" (1220)	+6" (150)	+6" (150)
66" (1675)	30" (760)	+6" (150)	+6" (150)
66" (1675)	48" (1220)	+6" (150)	+6" (150)
66" (1675)	66" (1675)	+6" (150)	+6" (150)

NOTES: 1. INLET BOXES ARE TO BE PRE-CAST OR CAST-IN-PLACE.
2. OUTSIDE OF PIPE MUST FIT INTO THE INTERIOR OF THE BOX.

WALL REINFORCEMENT SCHEDULE		
INTERIOR WALL DIMENSION	AREA OF HORIZONTAL REINFORCEMENT PER FOOT (mm ²)	AREA OF VERTICAL REINFORCEMENT PER FOOT (mm ²)
	IN ² (mm ²)	IN ² (mm ²)
LESS THAN 4' (1220)	0.132 (85)	0.132 (85)
4' (1220) TO 4.5' (1370)	0.163 (105)	0.132 (85)
4.5' (1370) TO 5' (1525)	0.198 (128)	0.132 (85)
5' (1525) TO 5.5' (1675)	0.239 (154)	0.132 (85)
5.5' (1675) TO 6' (1830)	0.284 (183)	0.132 (85)



SECTION A-A



SECTION B-B



DELAWARE
DEPARTMENT OF TRANSPORTATION

INLET BOX DETAILS

STANDARD NO. **D-4 (2000)** SHT. **1** OF **1**

APPROVED *Ryan M. Harkness* 6/18/01
CHIEF ENGINEER DATE
 RECOMMENDED *Mehal Akhavan* 6/18/01
DESIGN ENGINEER DATE