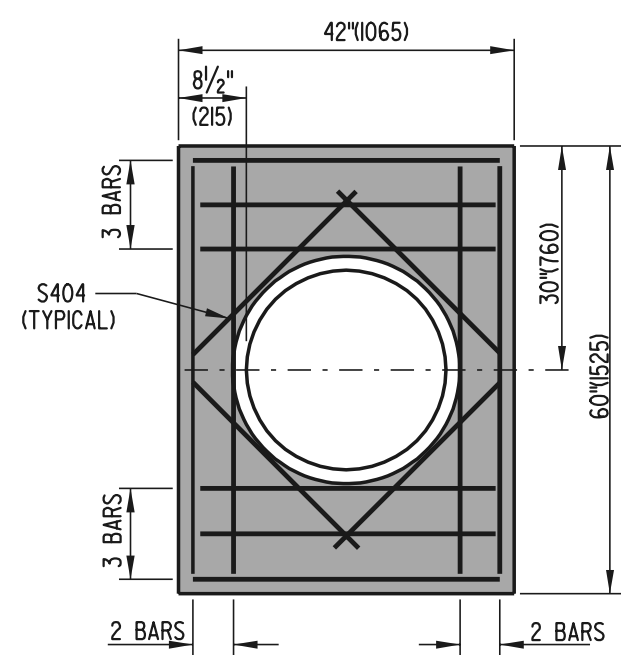
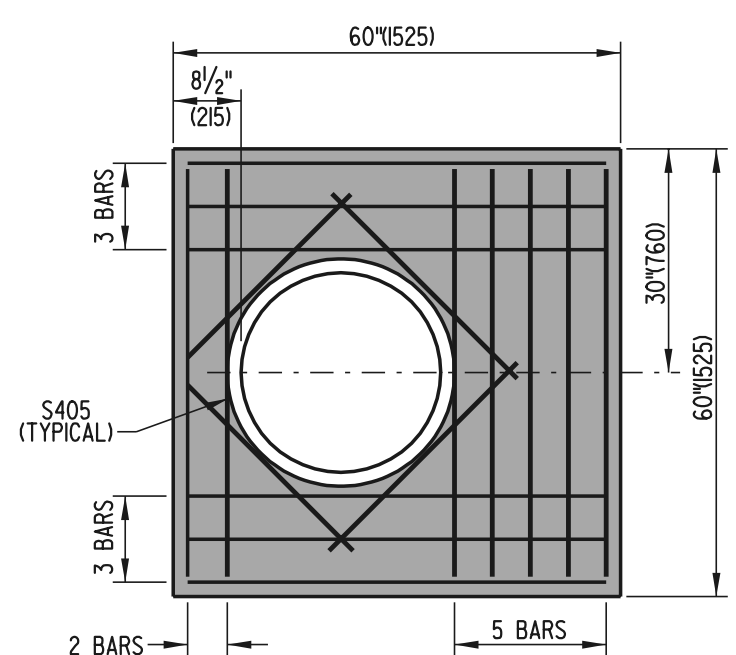


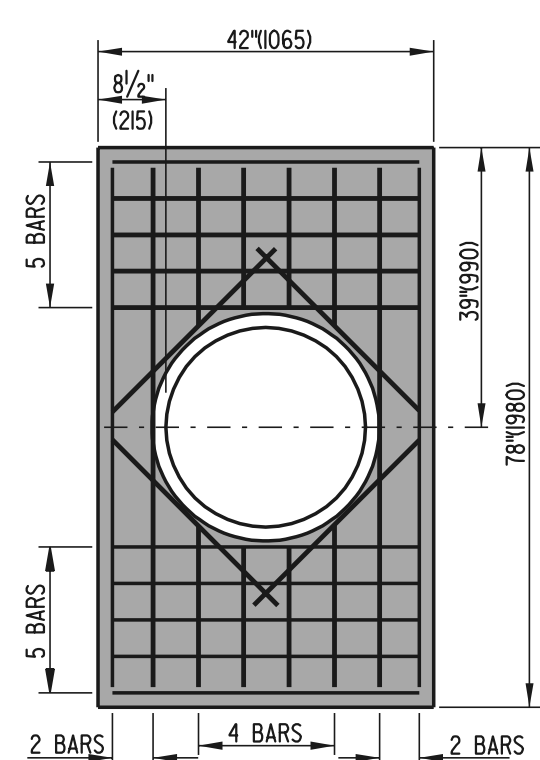
SCALE : N.T.S.



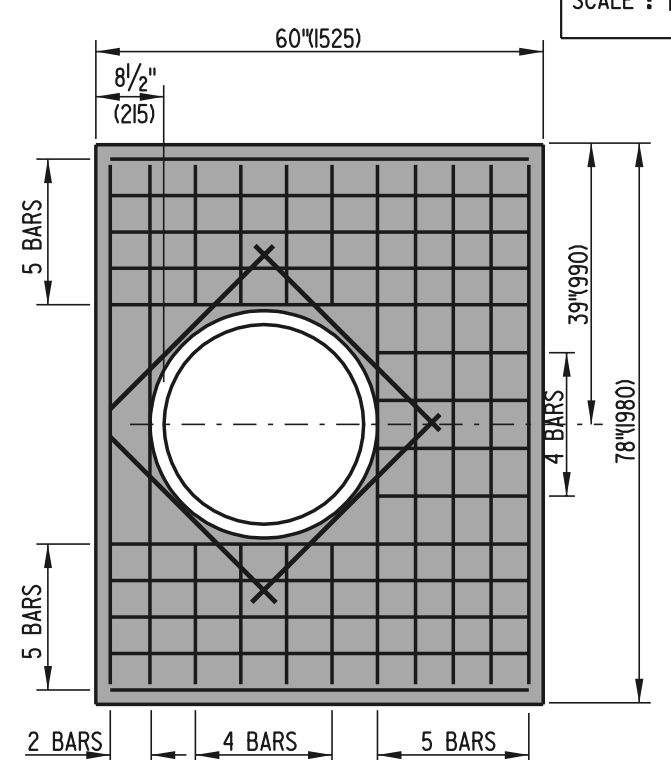
48" (I220) X 30" (760) MANHOLE



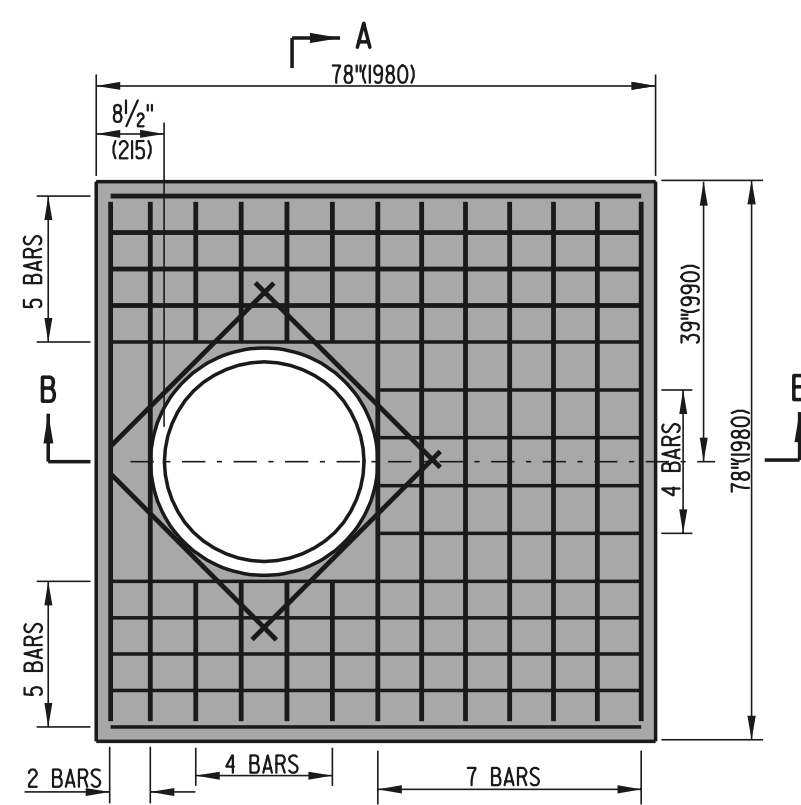
48" (I220) X 48" (I220) MANHOLE



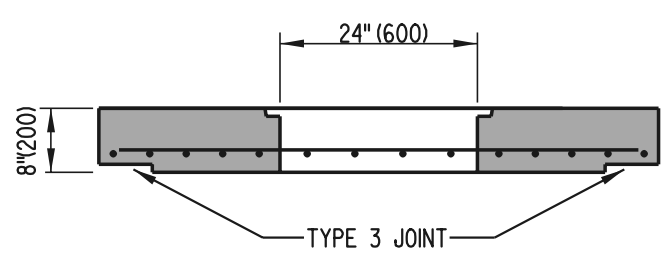
66" (I675) X 30" (760) MANHOLE



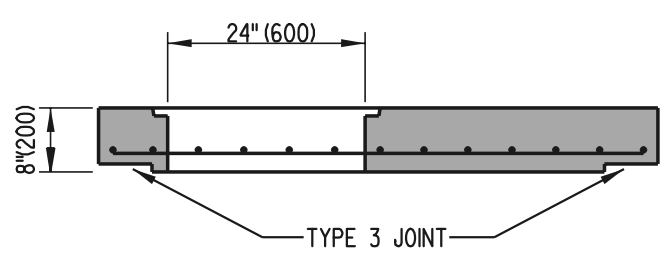
66" (I675) X 48" (I220) MANHOLE



66" (I675) X 66" (I675) MANHOLE



SECTION A-A



SECTION B-B

BOX MANHOLE COVER SLAB DETAILS

- NOTE:**
1. COVER SLABS ARE TO BE PRE-CAST.
 2. ALL BARS ARE TO BE #5 (#16) SPACED AT 6" (150) P.C.
 3. MINIMUM BAR COVER = 1/2" (38).



MANHOLE DETAILS			
STANDARD NO.	D-6 (2001)	SHT.	4 OF 4

APPROVED	<i>Ryan M. Harshbarger</i>	6/18/01
	CHIEF ENGINEER	DATE
RECOMMENDED	<i>Mehal Raju</i>	6/18/01
	DESIGN ENGINEER	DATE