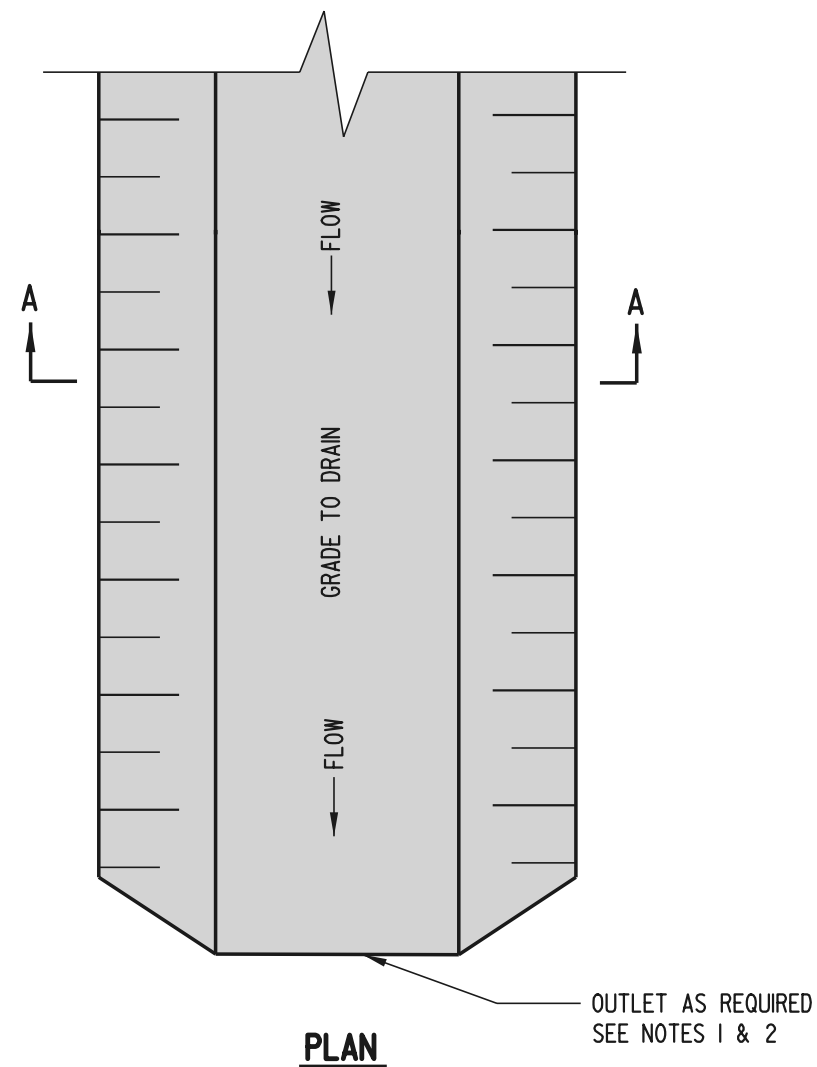


**SECTION A-A**

CHART A - STABILIZATION			
SYMBOL	SWALE GRADE	TYPE OF TREATMENT	
		DRAINAGE AREA A (5 AC (2 ha) OR LESS)	DRAINAGE AREA B (5 AC - 10 AC (2 ha - 4 ha))
1	0.5-2.0%	SEED USED WITH EROSION CONTROL BLANKET	SEED USED WITH EROSION CONTROL BL.
2	2.1-8.0%	R-4 RIRRAP	R-4 RIRRAP
3	8.1-20%	ENGINEERED DESIGN	ENGINEERED DESIGN



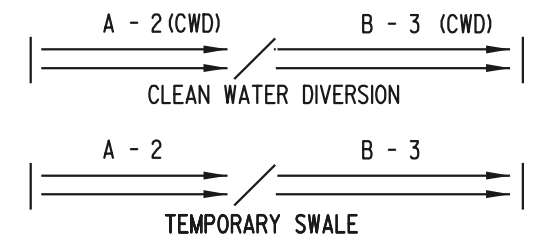
**PLAN**

CHART B - SWALE DIMENSIONS		
SYMBOL	SWALE A	SWALE B
C	1' (300) MIN.	1' (300) MIN.
D	4' (1200) MIN.	6' (1800) MIN.

SEE SECTION A - A

- NOTES:**
- DIVERTED RUNOFF FROM A DISTURBED AREA SHALL BE CONVEYED TO A SEDIMENT TRAPPING DEVICE.
  - DIVERTED RUNOFF FROM AN UNDISTURBED AREA SHALL OUTLET DIRECTLY INTO AN UNDISTURBED STABILIZED AREA AT NON-EROSIVE VELOCITY.
  - IF TEMPORARY SWALES OR CLEAN WATER DIVERSIONS ARE TO BE OPERATIONAL FOR MORE THAN 14 DAYS, THEY SHALL BE STABILIZED IN ACCORDANCE WITH CHART A PRIOR TO BECOMING OPERATIONAL.
  - IF TEMPORARY SWALES OR CLEAN WATER DIVERSIONS ARE TO BE OPERATIONAL FOR LESS THAN 14 DAYS, THEY SHALL BE STABILIZED WITH GEOTEXTILE IN ACCORDANCE WITH THE STANDARD DETAIL, "GEOTEXTILE-LINED CHANNEL DIVERSION".

**PLAN SYMBOL**



**DELAWARE  
DEPARTMENT OF TRANSPORTATION**

TEMPORARY SWALE				
STANDARD NO.	E-11 (2001)	SHT.	1	OF 1

APPROVED	<i>Ryan M. Harshbarger</i>	DATE	6/18/01
RECOMMENDED	<i>Mehal P. G...</i>	DATE	6/18/01