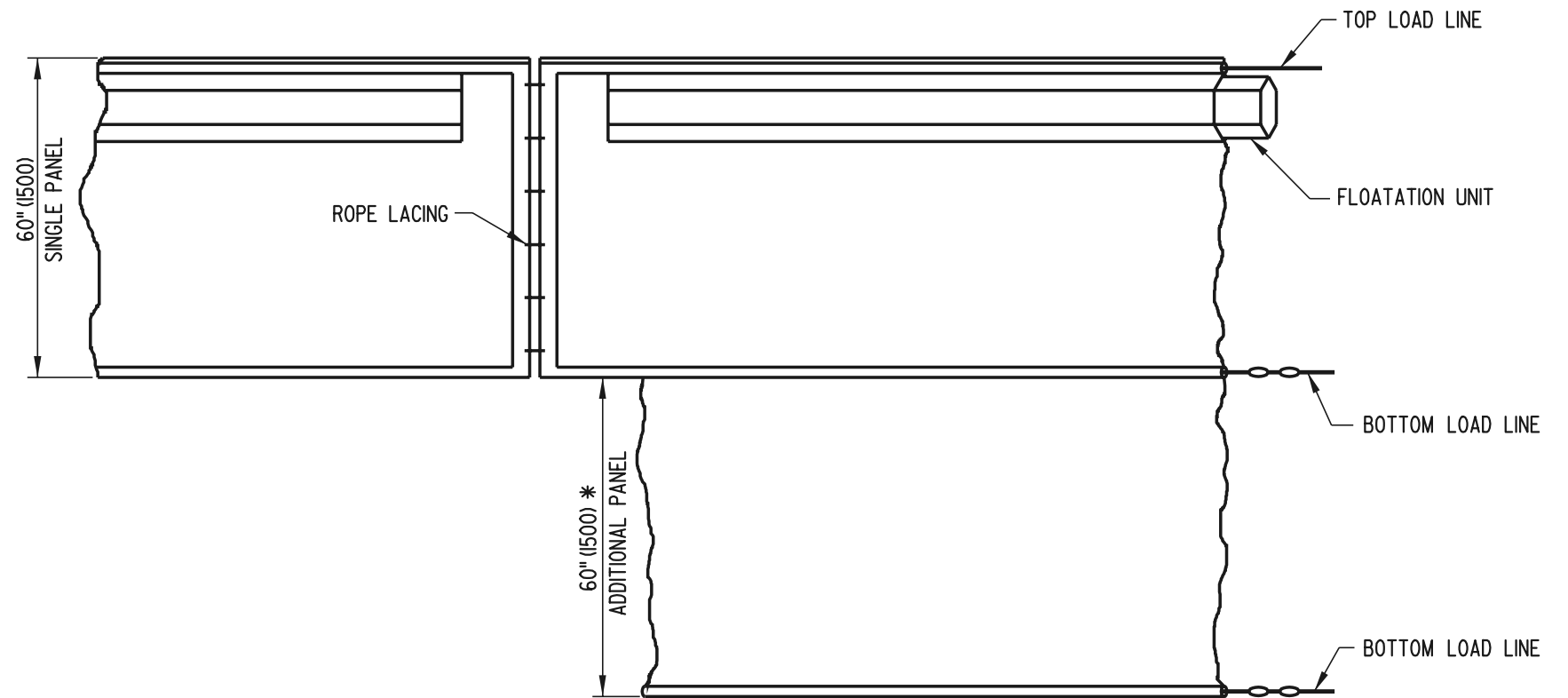
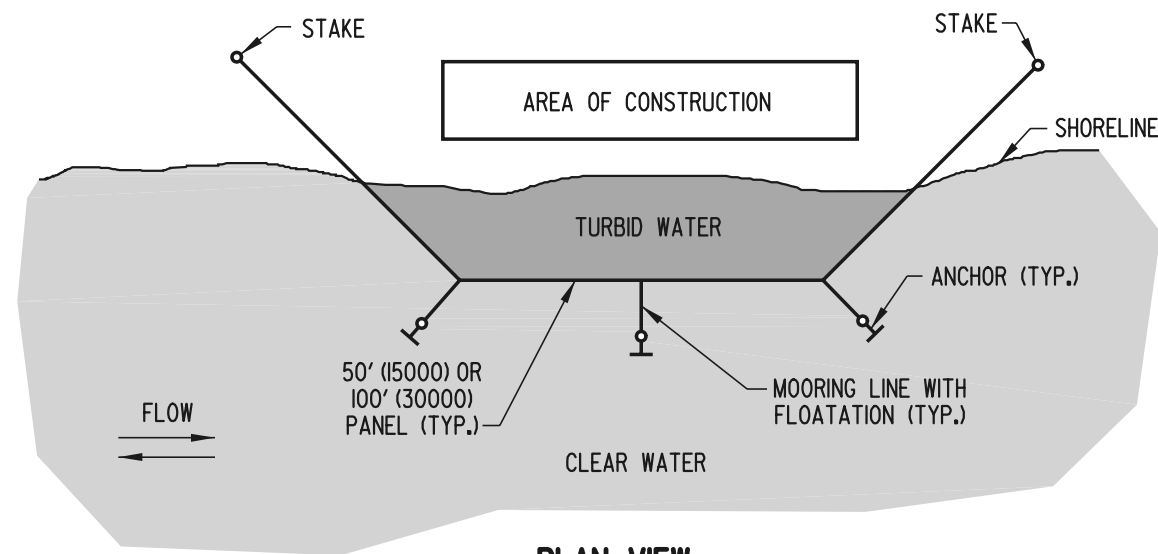


**PLAN VIEW**  
OPEN WATER APPLICATION



**ELEVATION**



**PLAN VIEW**  
SHORELINE APPLICATION

**FLOATING TURBIDITY CURTAIN**

- NOTE:** 1.) ADDITIONAL PANEL REQUIRED FOR DEPTHS GREATER THAN 5' (1500).  
2.) FLOATING TURBIDITY CURTAIN SHALL REACH BOTTOM UP TO DEPTHS OF 10' (3000) BY USING TWO PANELS. DEPTHS GREATER THAN 10' (3000) SHALL REQUIRE SPECIAL DEPTH CURTAINS SPECIFICALLY CALLED FOR IN THE PLANS OR AS DIRECTED BY THE ENGINEER.

**PLAN SYMBOL**

— FTC —



**DELAWARE**  
**DEPARTMENT OF TRANSPORTATION**

**TURBIDITY CURTAIN**

STANDARD NO. **E-23 (2001)**

SHT. **1** OF **2**

APPROVED *Ryan M. Harshbarger* **6/18/01**  
CHIEF ENGINEER DATE  
 RECOMMENDED *Mehal Alghobari* **6/18/01**  
DESIGN ENGINEER DATE