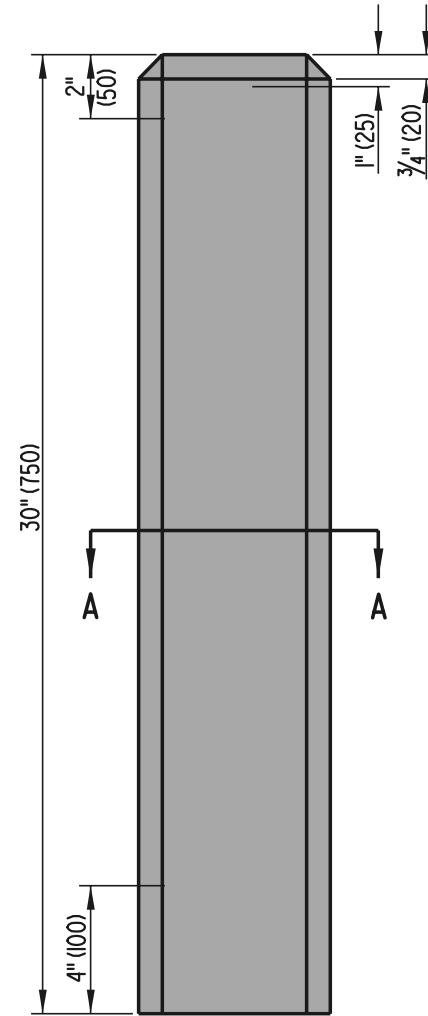
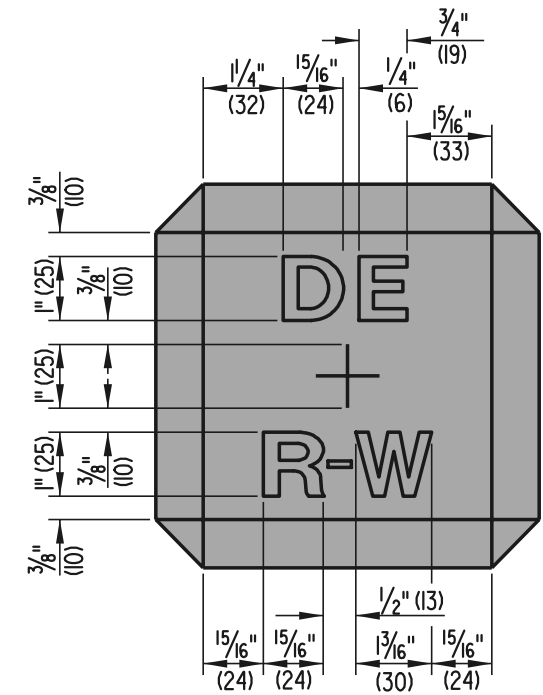


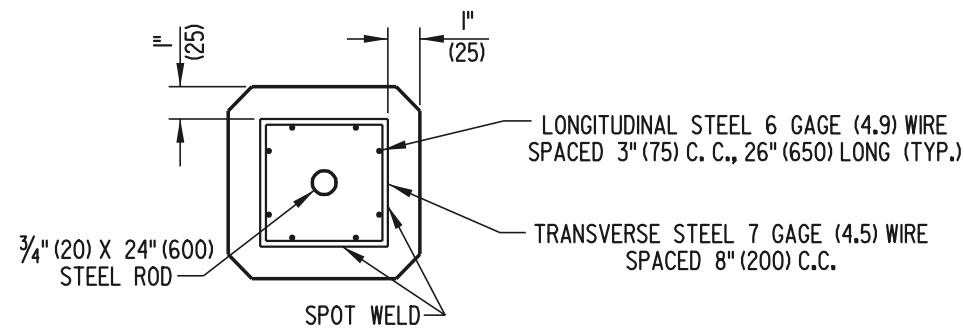
TOP



ELEVATION



TOP DETAIL



SECTION A-A

- NOTES :**
- LONGITUDINAL STEEL SHALL BE HELD IN PLACE BY CRADLES.
 - LETTERS AND CROSS TO BE COUNTERSUNK IN TOP OF MARKER 1/4" (6).



DELAWARE
DEPARTMENT OF TRANSPORTATION

CONCRETE MONUMENT

STANDARD NO. **M-2 (2001)** SHT. **1** OF **1**

APPROVED *Ryan M. Harshbarger* **6/18/01**
CHIEF ENGINEER DATE

RECOMMENDED *Mehal Rajda* **6/18/01**
DESIGN ENGINEER DATE