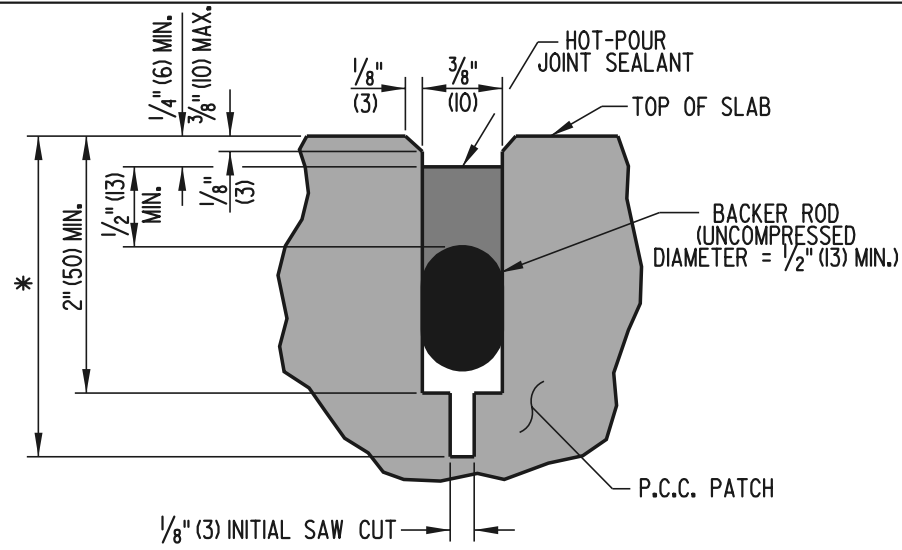
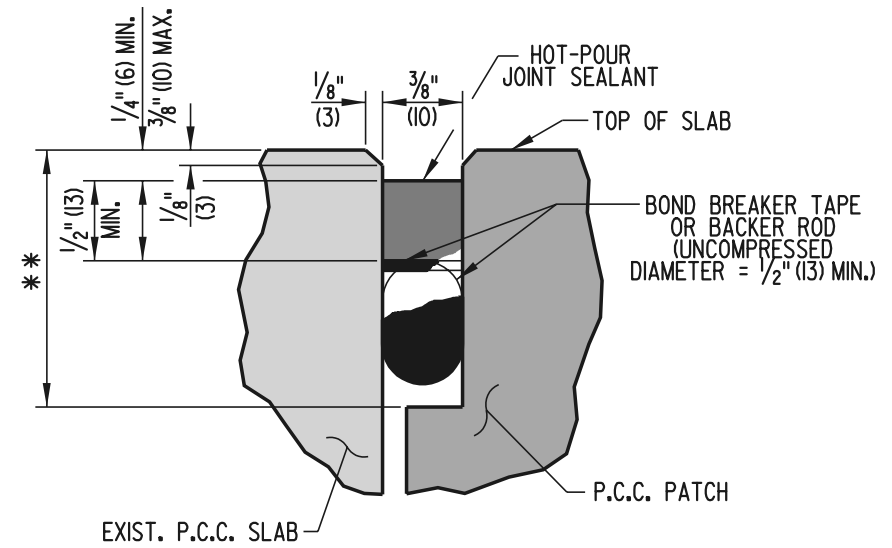


**SEALANT DETAIL-  
LONGITUDINAL JOINT**



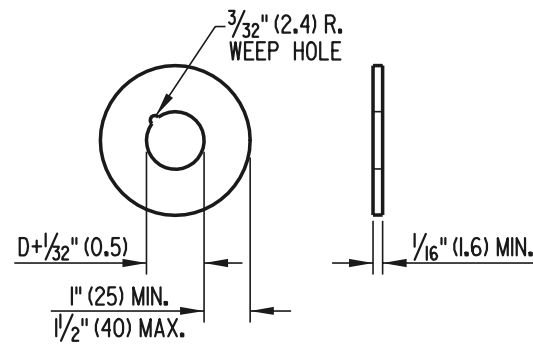
\* - 0.3T (T < 10" (250) P.C.C. PAVEMENT)  
0.4T (T > 10" (250) P.C.C. PAVEMENT)

**SEALANT DETAIL-  
TRANSVERSE SAW-CUT JOINT**



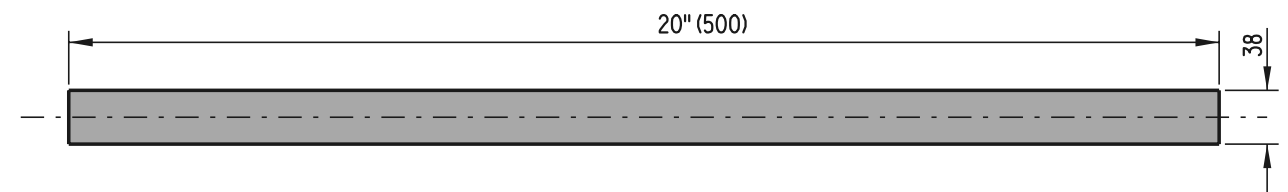
\*\* - 2" (50) MIN. WITH BACKER ROD  
5/8" (16) MIN. WITH BOND BREAKER TAPE

**SEALANT DETAIL-  
TRANSVERSE CONSTRUCTION JOINT**



D - DOWEL DIAMETER (INCLUDING PROTECTING COATINGS, IF ANY.)

**GROUT RETENTION DISK**



**DOWEL BAR**

- NOTES:**
- 1). AS DIMENSIONED, THE WIDTH OF THE TRANSVERSE SEALANT RESERVOIR IS APPLICABLE WHEN THE TEMPERATURE OF THE PAVEMENT SURFACE IS BETWEEN 59°F (15°C) AND 80°F (27°C). WHEN THE TEMPERATURE IS BELOW 59°F (15°C), THE SEALANT RESERVOIR SHALL BE CUT 1/16" (2) WIDER. WHEN THE TEMPERATURE IS ABOVE 80°F (27°C), THE SEALANT RESERVOIR SHALL BE CUT 1/16" (2) NARROWER.
  - 2). "T" REFERS TO THE EXISTING "AS-BUILT" SLAB THICKNESS.
  - 3). TOLERANCE ON ALL JOINT SEALANT DETAIL DIMENSIONS SHOWN WITHOUT RANGES SHALL BE PLUS 1/16" (2), MINUS 0" (0).
  - 4). THE TOP EDGES OF THE CONTACT SURFACES OF THE SEALANT MATERIAL ON BOTH SIDES OF THE JOINT RESERVOIR SHALL BE AT THE SAME ELEVATION.

**FULL DEPTH PATCH**



**DELAWARE  
DEPARTMENT OF TRANSPORTATION**

**P.C.C. PAVEMENT PATCHING**

STANDARD NO.

P-2 (2001)

SHT. 3

OF 5

APPROVED

*Ryan M. Harshbarger*  
CHIEF ENGINEER DATE 6/18/01

RECOMMENDED

*Mehal R. G. [Signature]*  
DESIGN ENGINEER DATE 6/18/01