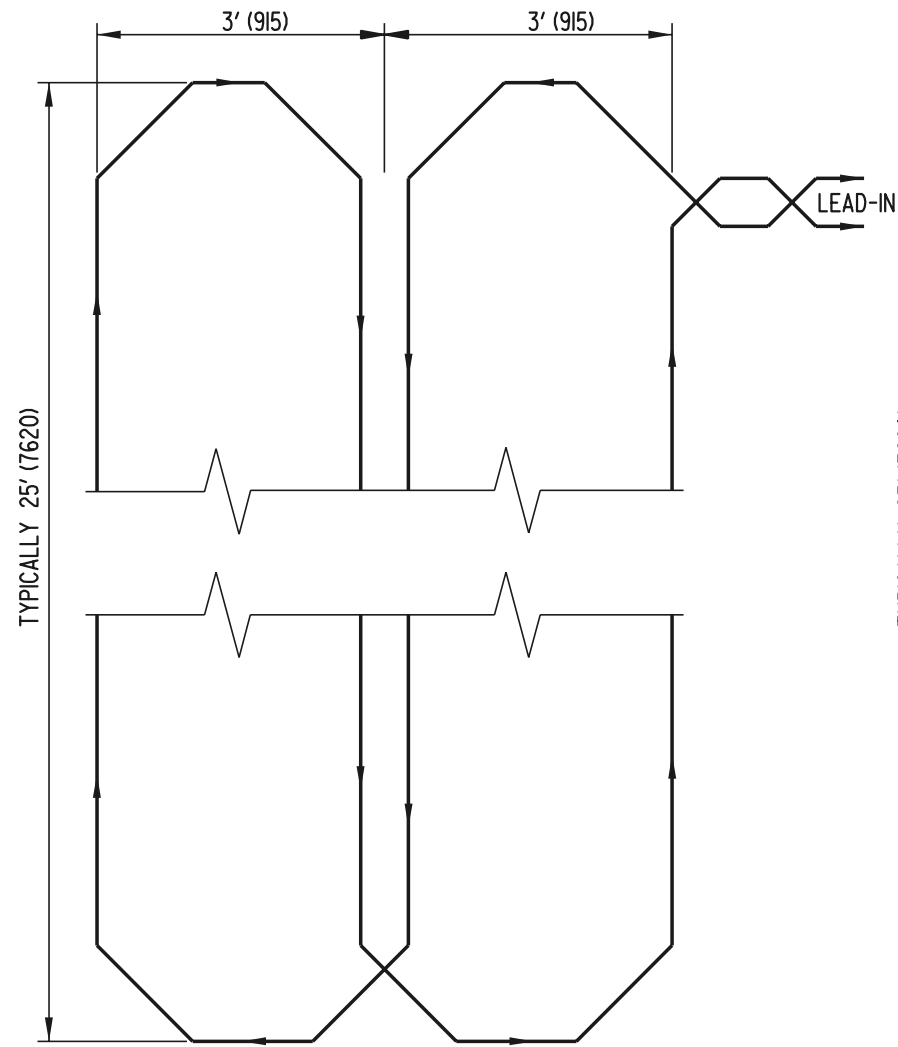
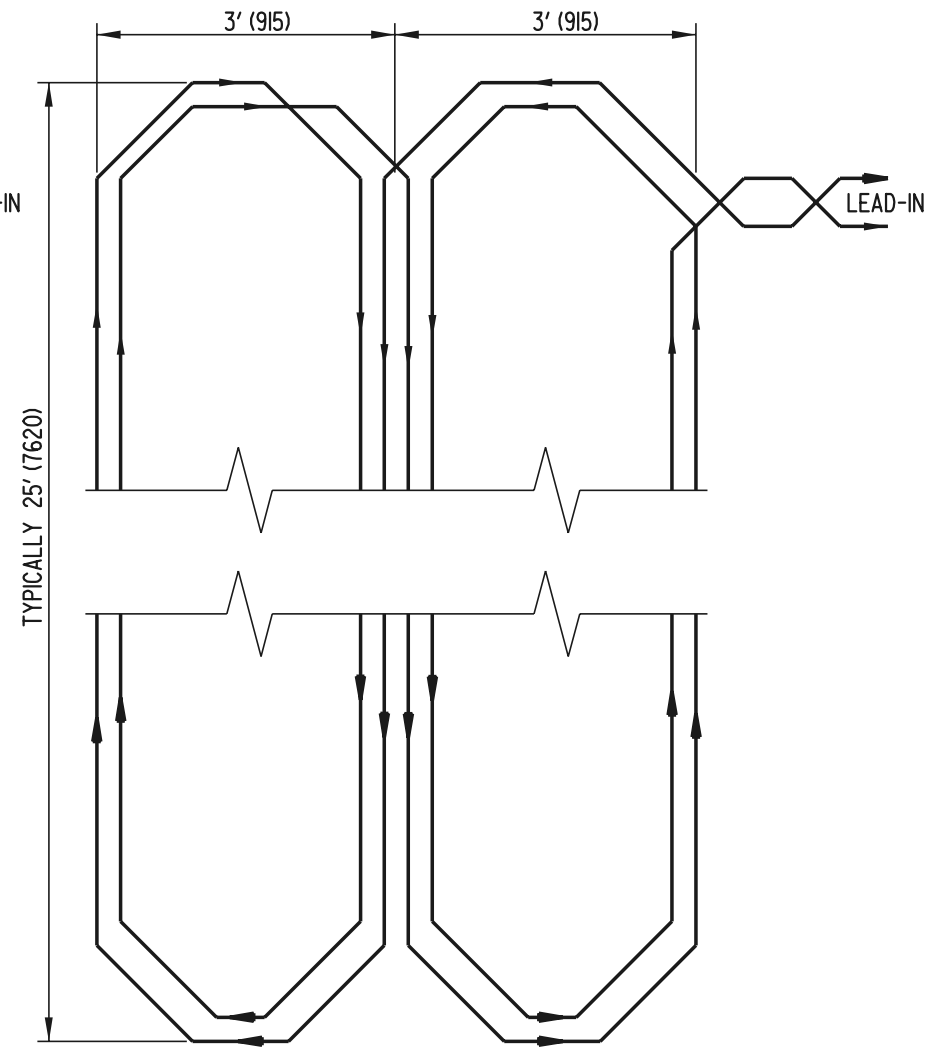


WIRE SLOT CONSTRUCTION



SINGLE WRAP
(CONOGA WIRE)

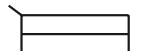


TRIPLE WRAP
(#14 WIRE)

DETAILS FOR INSTALLING DETECTOR CABLE

NOTES: 1). SAW CUTS FOR WIRE SLOT CONSTRUCTION SHALL BE EXTENDED BEYOND THE CORNERS SO THAT THE SLOT IS FULL DEPTH AT TURN POINTS. A FORTY-FIVE (45) DEGREE ANGLE SHALL BE CUT 12" (300) BACK FROM THE POINT OF THE EXTENDED CORNER.

PLAN SYMBOL



DELAWARE
DEPARTMENT OF TRANSPORTATION

TYPE #2 LOOP DETECTOR

STANDARD NO. **T-10 (2001)** SHT. **1** OF **1**

APPROVED *Ryan M. Harkness* **6/18/01**
CHIEF ENGINEER DATE

RECOMMENDED *Michael P. [Signature]* **6/18/01**
DESIGN ENGINEER DATE