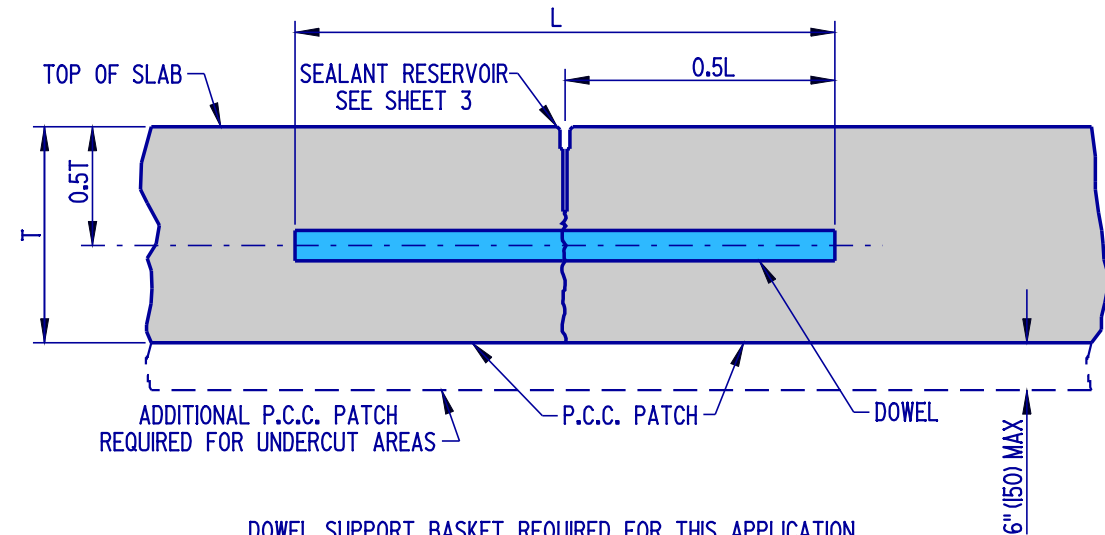


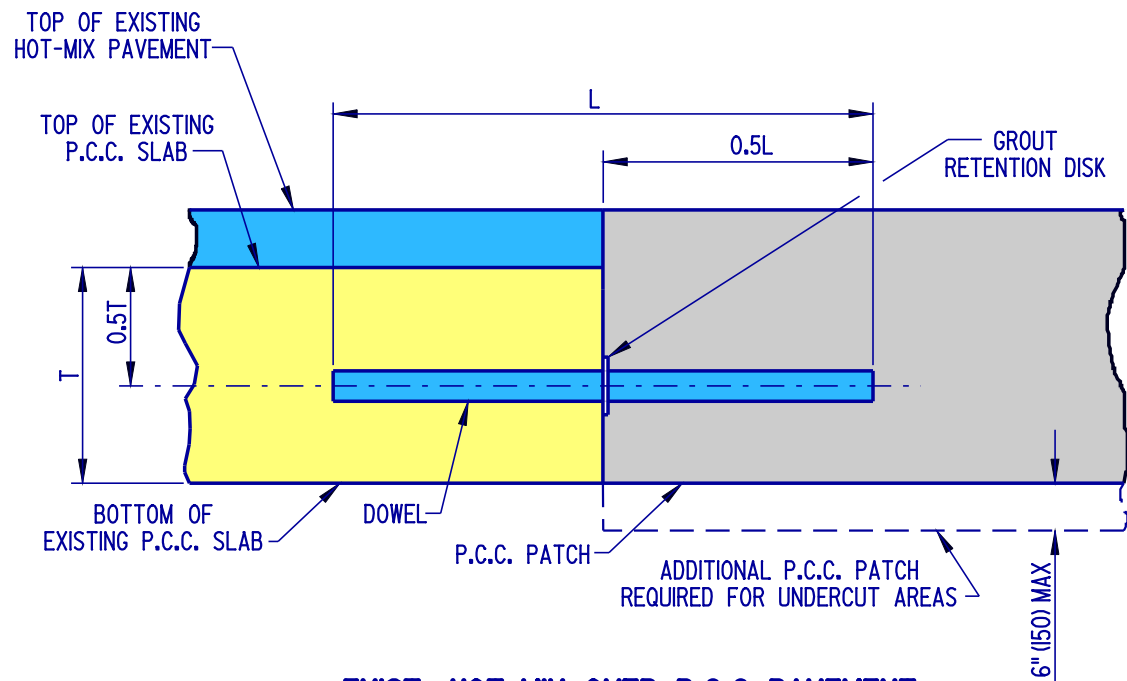
**SECTION A-A**



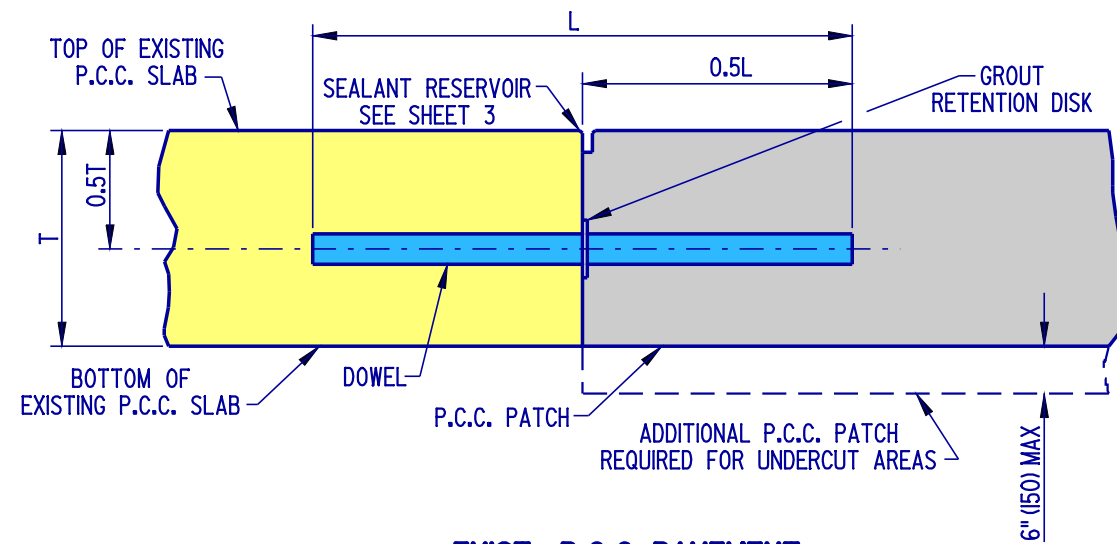
DOWEL SUPPORT BASKET REQUIRED FOR THIS APPLICATION  
(REFER TO STANDARD CONSTRUCTION DETAIL FOR P.C.C. PAVEMENT.)

**SECTION B-B**

TRANSVERSE SAW-CUT USED FOR JOINTS LOCATED WITHIN THE PATCH



**EXIST. HOT-MIX OVER P.C.C. PAVEMENT**



**EXIST. P.C.C. PAVEMENT**

**SECTION C-C**

TRANSVERSE CONSTRUCTION JOINT USED ON JOINTS BETWEEN EXISTING PAVEMENT AND PATCH

**FULL DEPTH PATCH**



DELAWARE  
DEPARTMENT OF TRANSPORTATION

P.C.C. PAVEMENT PATCHING

STANDARD NO. P-2 (2004)

SHT. 2 OF 5

APPROVED *Carolann Wicks* 1/10/05  
CHIEF ENGINEER DATE

RECOMMENDED *Dennis M. O'Flaherty* 1/3/05  
DESIGN ENGINEER DATE