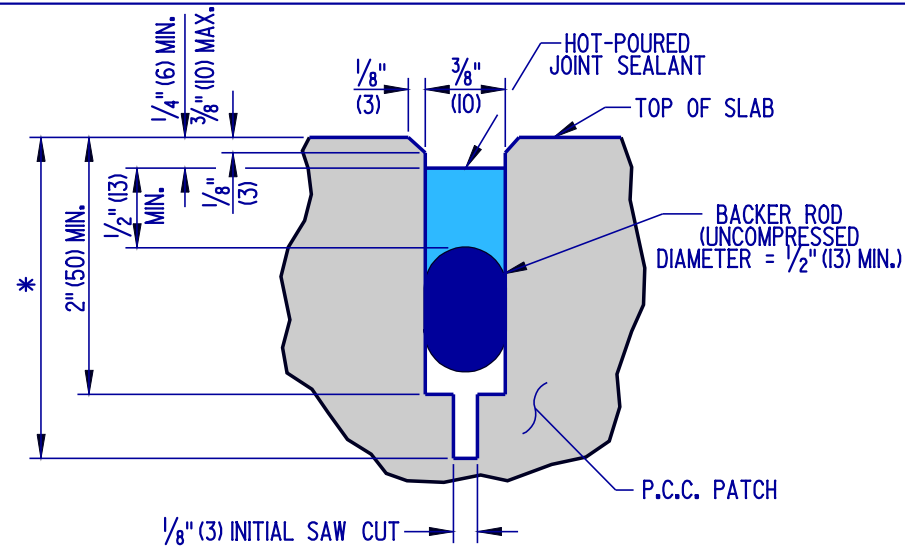
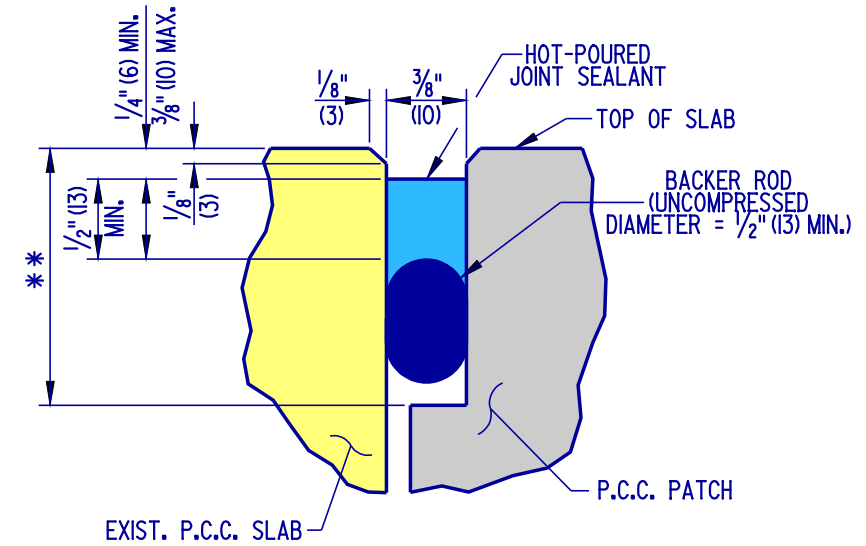


**SEALANT DETAIL - LONGITUDINAL JOINT**



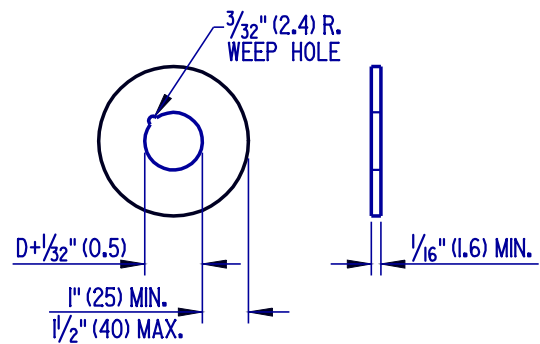
\* - 0.3T (T < 10" (250) P.C.C. PAVEMENT)  
0.4T (T > 10" (250) P.C.C. PAVEMENT)

**SEALANT DETAIL - TRANSVERSE SAW-CUT JOINT**



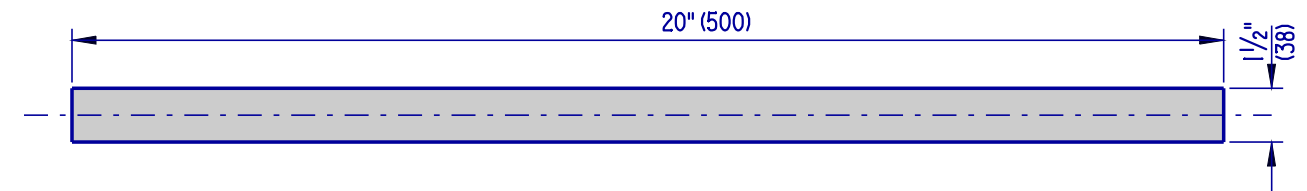
\*\* - 2" (50) MIN. WITH BACKER ROD  
5/8" (16) MIN. WITH BOND BREAKER TAPE

**SEALANT DETAIL - TRANSVERSE CONSTRUCTION JOINT**



D - DOWEL DIAMETER (INCLUDING PROTECTING COATINGS, IF ANY.)

**GROUT RETENTION DISK**



**DOWEL BAR**

**NOTES:**

- 1). AS DIMENSIONED, THE WIDTH OF THE TRANSVERSE SEALANT RESERVOIR IS APPLICABLE WHEN THE TEMPERATURE OF THE PAVEMENT SURFACE IS BETWEEN 60°F (16°C) AND 80°F (27°C). WHEN THE TEMPERATURE IS BELOW 60°F (16°C), THE SEALANT RESERVOIR SHALL BE CUT 1/16" (2) WIDER. WHEN THE TEMPERATURE IS ABOVE 80°F (27°C), THE SEALANT RESERVOIR SHALL BE CUT 1/16" (2) NARROWER.
- 2). "T" REFERS TO THE EXISTING "AS-BUILT" SLAB THICKNESS.
- 3). TOLERANCE ON ALL JOINT SEALANT DETAIL DIMENSIONS SHOWN WITHOUT RANGES SHALL BE PLUS 1/16" (2), MINUS 0" (0).
- 4). THE TOP EDGES OF THE CONTACT SURFACES OF THE SEALANT MATERIAL ON BOTH SIDES OF THE JOINT RESERVOIR SHALL BE AT THE SAME ELEVATION.

**FULL DEPTH PATCH**



**DELAWARE DEPARTMENT OF TRANSPORTATION**

**P.C.C. PAVEMENT PATCHING**

STANDARD NO. **P-2 (2004)** SHT. **3** OF **5**

APPROVED *Carolann Wicks* 1/10/05  
CHIEF ENGINEER DATE

RECOMMENDED *Dennis M. O'Flaherty* 1/13/05  
DESIGN ENGINEER DATE