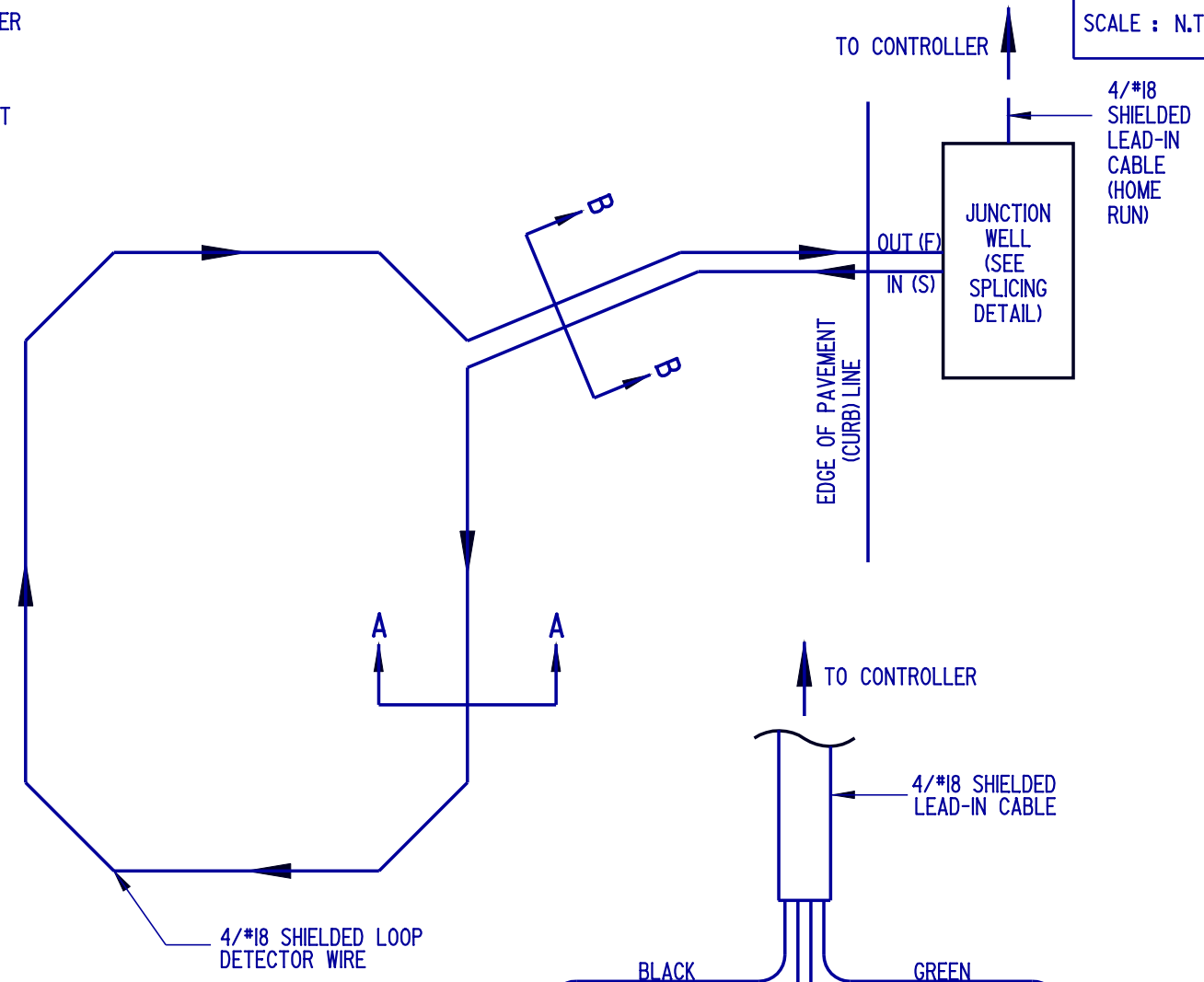
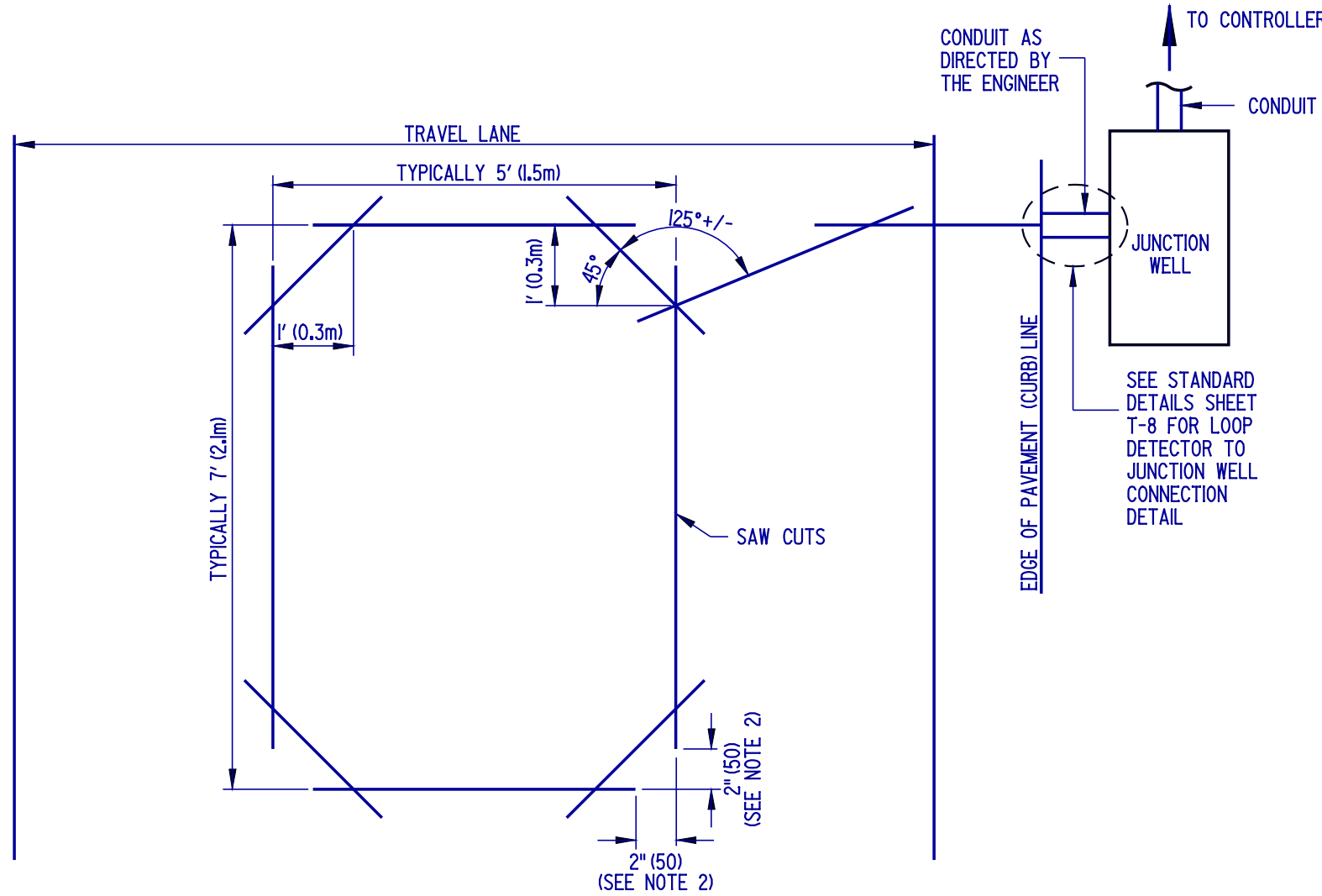


SCALE : N.T.S.

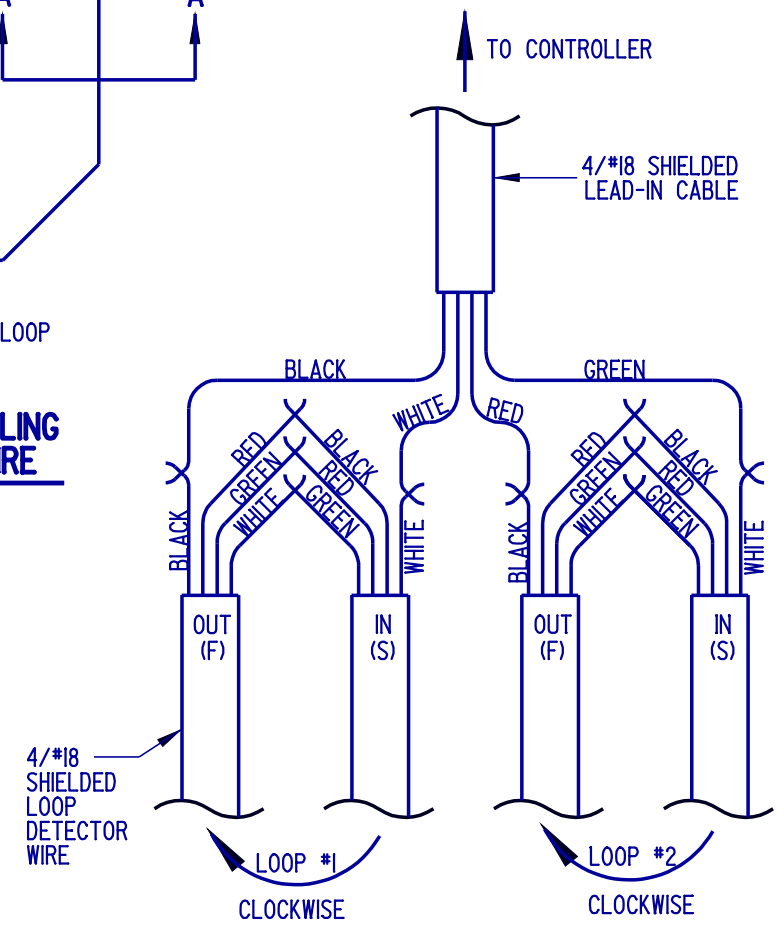
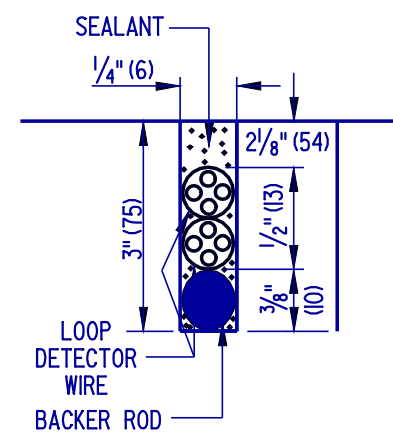
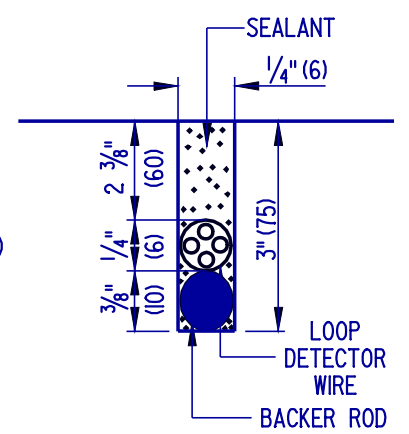


WIRE SLOT CONSTRUCTION

DETAILS FOR INSTALLING LOOP DETECTOR WIRE (SINGLE WRAP)

NOTES:

- 1). SAW CUTS FOR WIRE SLOT CONSTRUCTION SHALL BE EXTENDED BEYOND THE CORNERS SO THAT THE SLOT IS FULL DEPTH AT TURN POINTS. A FORTY-FIVE (45) DEGREE ANGLE SHALL BE CUT 12" (300) BACK FROM THE POINT OF THE EXTENDED CORNER.
- 2). THE DIAGONAL CUT SHALL BE STOPPED APPROXIMATELY 2" (50) FROM THE CORNER TO PREVENT THE TRIANGULAR PORTION OF THE PAVEMENT FROM BREAKING.
- 3). A MAXIMUM OF TWO LOOP DETECTORS CAN BE SPLICED TO ONE LEAD-IN CABLE, THE DETAIL ILLUSTRATES THE METHOD OF SPLICING TWO LOOP DETECTORS (LOOP #1 AND LOOP #2) TO A LEAD-IN CABLE.
- 4). LOOP DETECTOR SHALL BE CENTERED IN TRAVEL LANE.



SECTION A - A

SECTION B - B

SPLICING DETAIL (SEE NOTE 3)

PLAN SYMBOL



DELAWARE DEPARTMENT OF TRANSPORTATION

TYPE #1 LOOP DETECTOR
 STANDARD NO. T-9 (2004) SHT. 1 OF 1

APPROVED *Carolann Wick* 1/10/05
 CHIEF ENGINEER DATE
 RECOMMENDED *Dennis M. O'Flaherty* 1/13/05
 DESIGN ENGINEER DATE