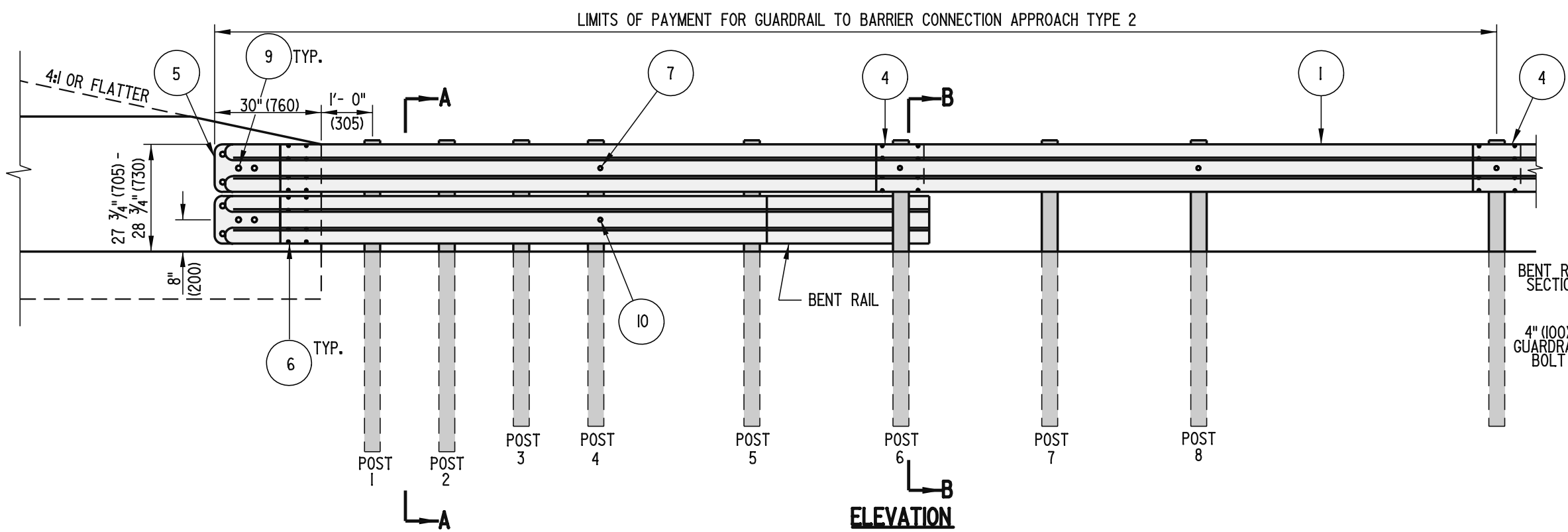
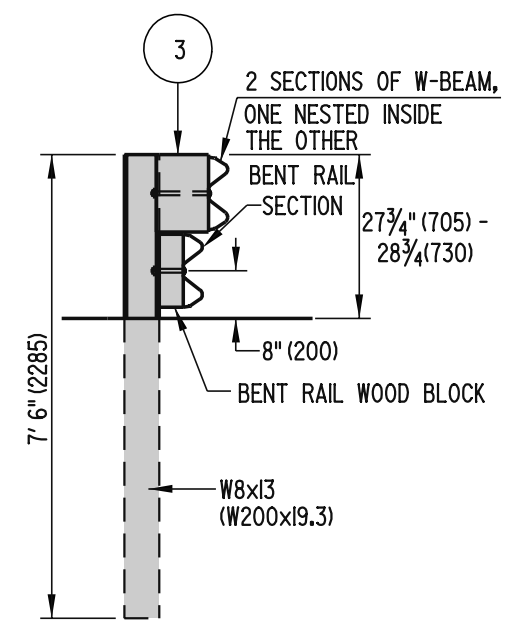


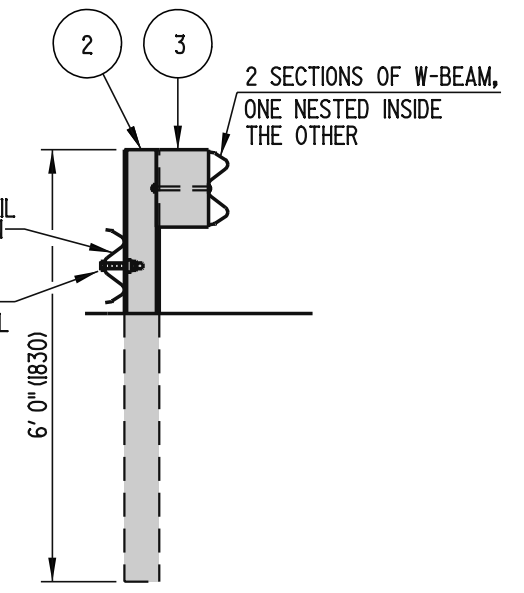
PLAN



ELEVATION




SECTION A-A



SECTION B-B

NOTES :

- 1). CURB SHALL NOT BE USED AT THE FACE OF RAIL WITHIN THE LIMITS OF THIS INSTALLATION.
- 2). POSTS 1, 2, 3, 4, AND 6 REQUIRE AN ADDITIONAL HOLE TO ATTACH WOOD BLOCKS AND/OR BENT RAIL.
- 3). DO NOT ATTACH RAILS TO POSTS 1, 2, 3, 5, OR 7.
- 4). POSTS 1 AND 2 ARE W8x13 (W200x19.3). ALL OTHER POSTS IN TRANSITION ARE W6x9 (w150x13.5).
- 5). ALL HOLES SHALL BE DRILLED PRIOR TO GALVANIZING.
- 6). BENT RAIL MAY BE SHOP BENT TO FACILITATE INSTALLATION OR MAY BE FIELD BENT USING HEAT.
- 7). APPROVED CONCRETE INSERTS MAY BE USED IN NEW CONSTRUCTION TO ATTACH TERMINAL CONNECTORS TO PARAPET.
- 8). PLACE GUARDRAIL REFLECTOR EVERY FIFTH POST.
- 9). FOR INSTALLATIONS WHERE CURB EXISTS, IF THE EXISTING CURB IS 8" (200) OR HIGHER AND CANNOT BE REMOVED, THE BOTTOM RAIL CAN BE ELIMINATED.

 DELAWARE DEPARTMENT OF TRANSPORTATION	GUARDRAIL TO BARRER CONNECTION, APPROACH TYPE 2			APPROVED <i>Carolyn Wick</i> 12/15/05 <small>CHIEF ENGINEER DATE</small>
	STANDARD NO. B-8 (2005)	SHT. 1 OF 2		RECOMMENDED <i>James M. O'Brien</i> 11/29/05 <small>DESIGN ENGINEER DATE</small>