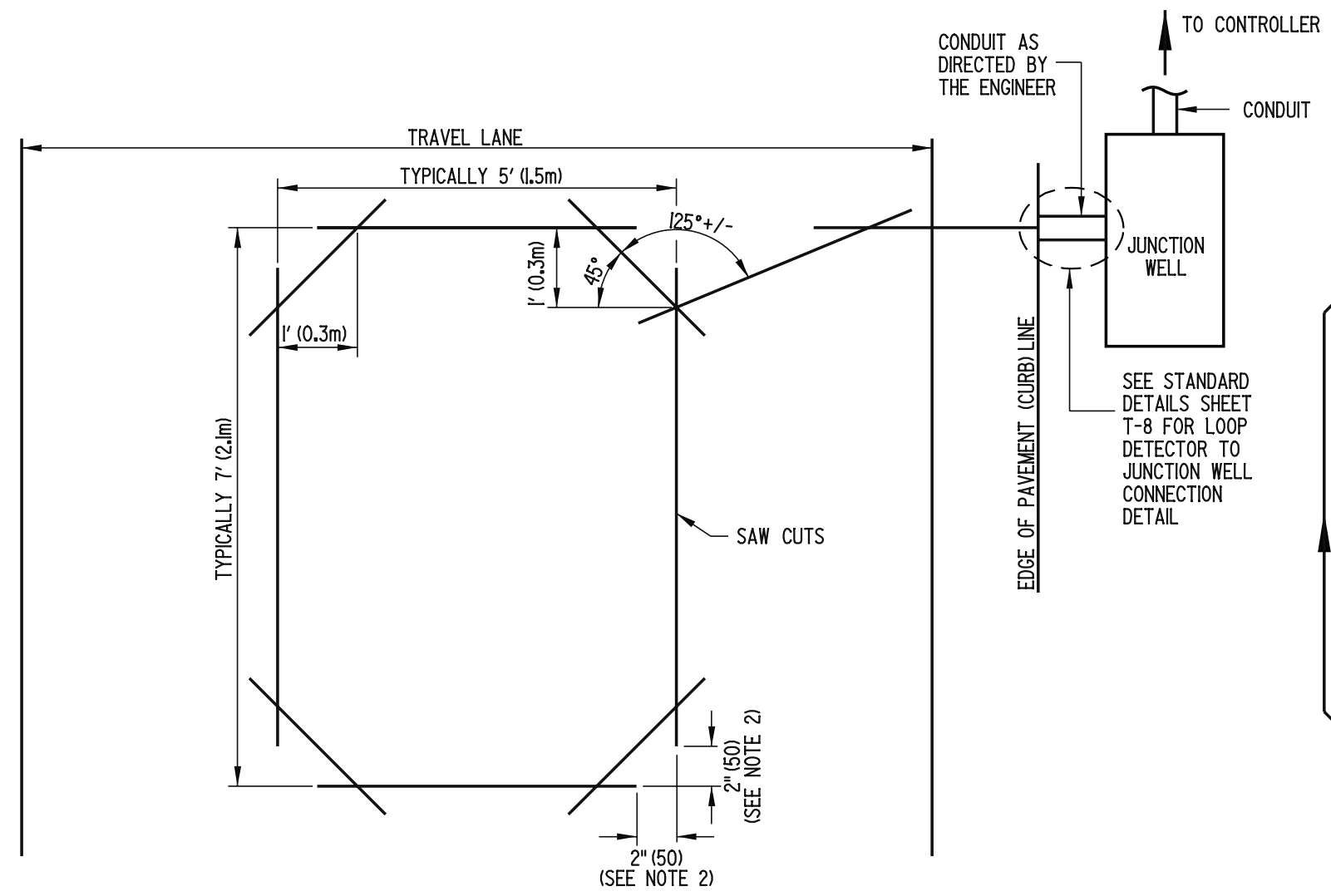
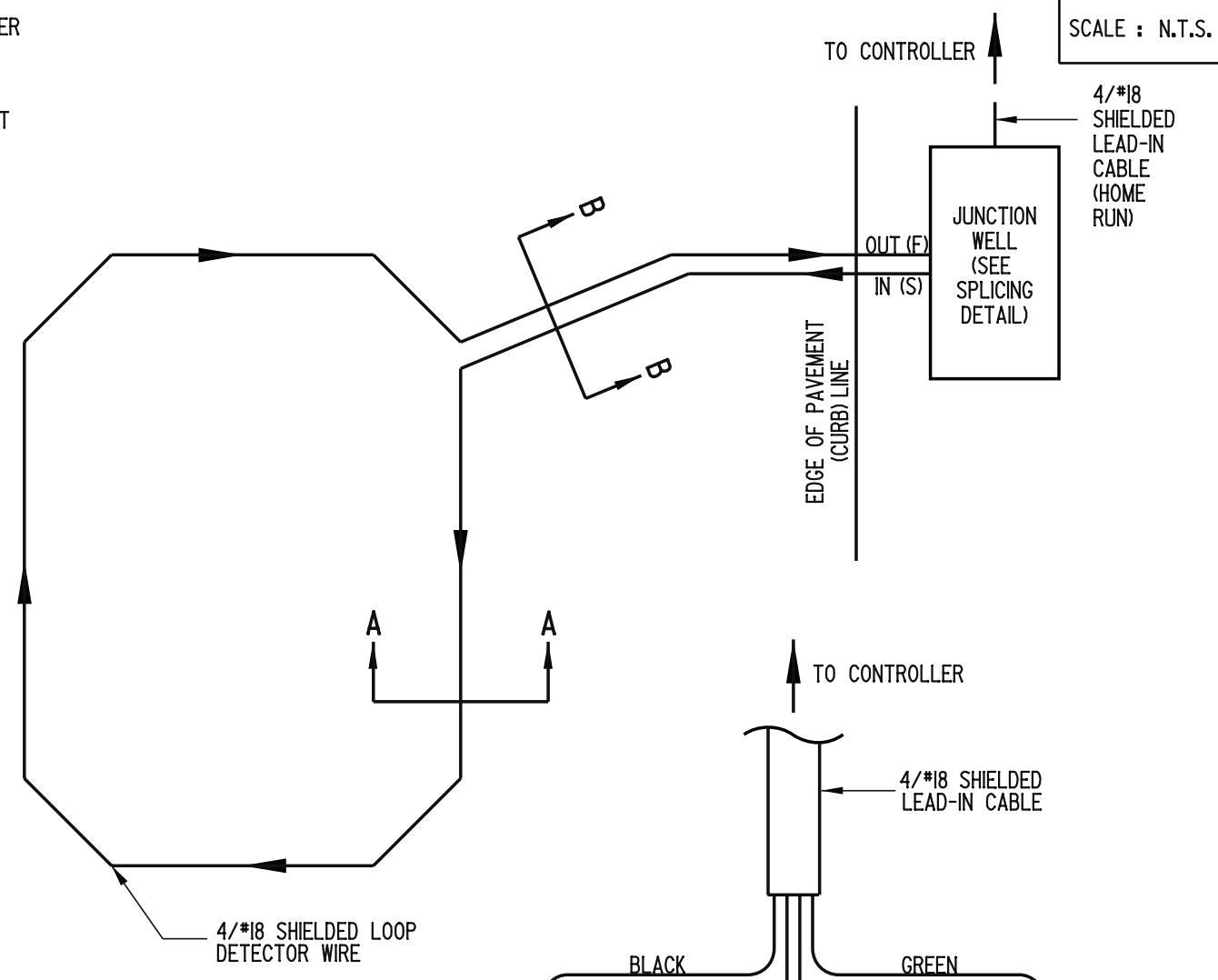


SCALE : N.T.S.



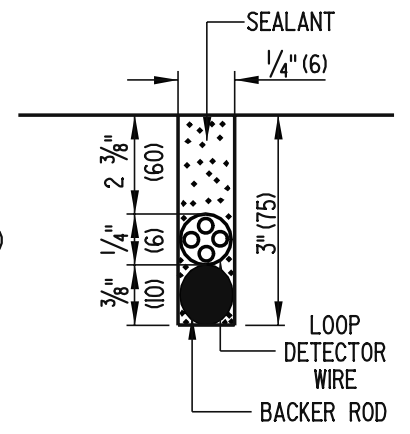
WIRE SLOT CONSTRUCTION



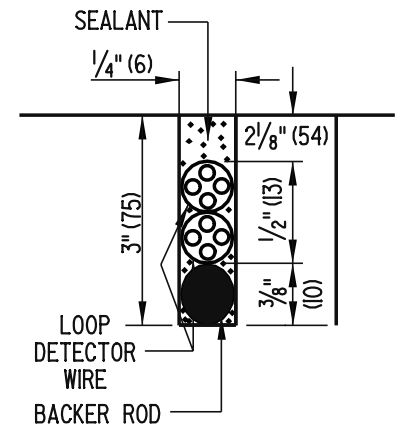
DETAILS FOR INSTALLING LOOP DETECTOR WIRE (SINGLE WRAP)

NOTES:

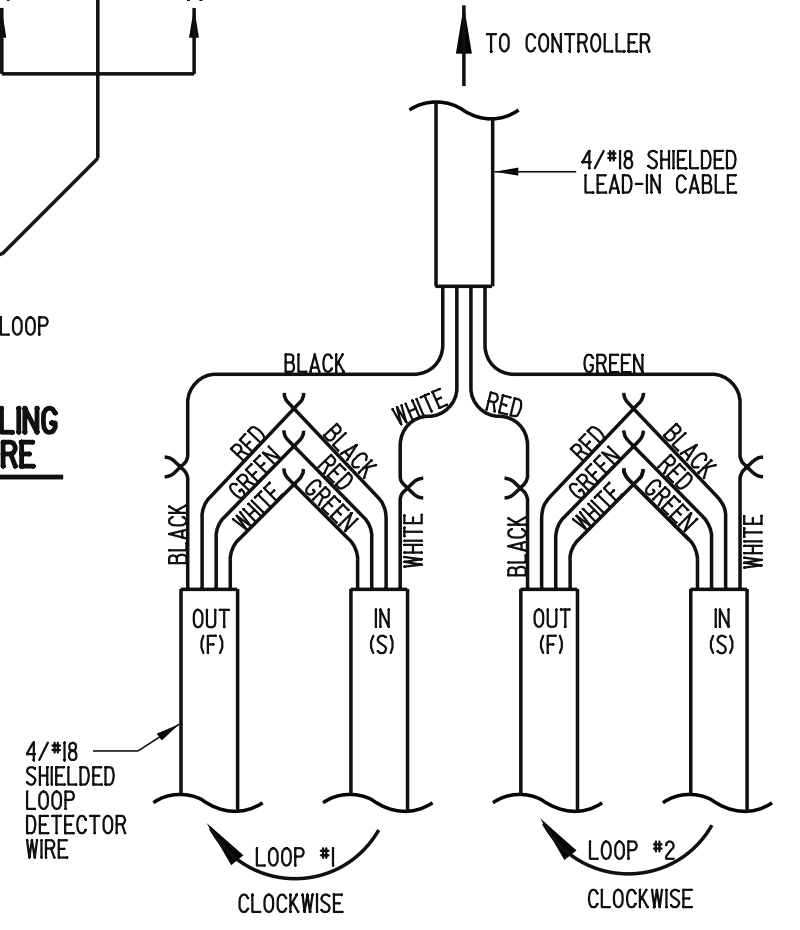
- 1). SAW CUTS FOR WIRE SLOT CONSTRUCTION SHALL BE EXTENDED BEYOND THE CORNERS SO THAT THE SLOT IS FULL DEPTH AT TURN POINTS. A FORTY-FIVE (45) DEGREE ANGLE SHALL BE CUT 12" (300) BACK FROM THE POINT OF THE EXTENDED CORNER.
- 2). THE LONGITUDINAL / TRANSVERSE CUT SHALL BE STOPPED APPROXIMATELY 2" (50) FROM THE CORNER TO PREVENT THE TRIANGULAR PORTION OF THE PAVEMENT FROM BREAKING.
- 3). A MAXIMUM OF TWO LOOP DETECTORS CAN BE SPLICED TO ONE LEAD-IN CABLE, THE DETAIL ILLUSTRATES THE METHOD OF SPLICING TWO LOOP DETECTORS (LOOP #1 AND LOOP #2) TO A LEAD-IN CABLE.
- 4). LOOP DETECTOR SHALL BE CENTERED IN TRAVEL LANE.



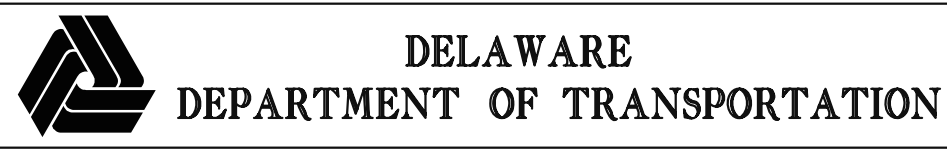
SECTION A - A



SECTION B - B



SPLICING DETAIL (SEE NOTE 3)



| | | | |
|------------------------------|------------|------|--------|
| TYPE #1 LOOP DETECTOR | | | |
| STANDARD NO. | T-9 (2005) | SHT. | 1 OF 1 |

| | | |
|-------------|--|------------------|
| APPROVED | <i>Carolyn Wick</i> CHIEF ENGINEER | 12/5/05 DATE |
| RECOMMENDED | <i>James M. O'Brien</i> DESIGN ENGINEER | 11/29/05 DATE |