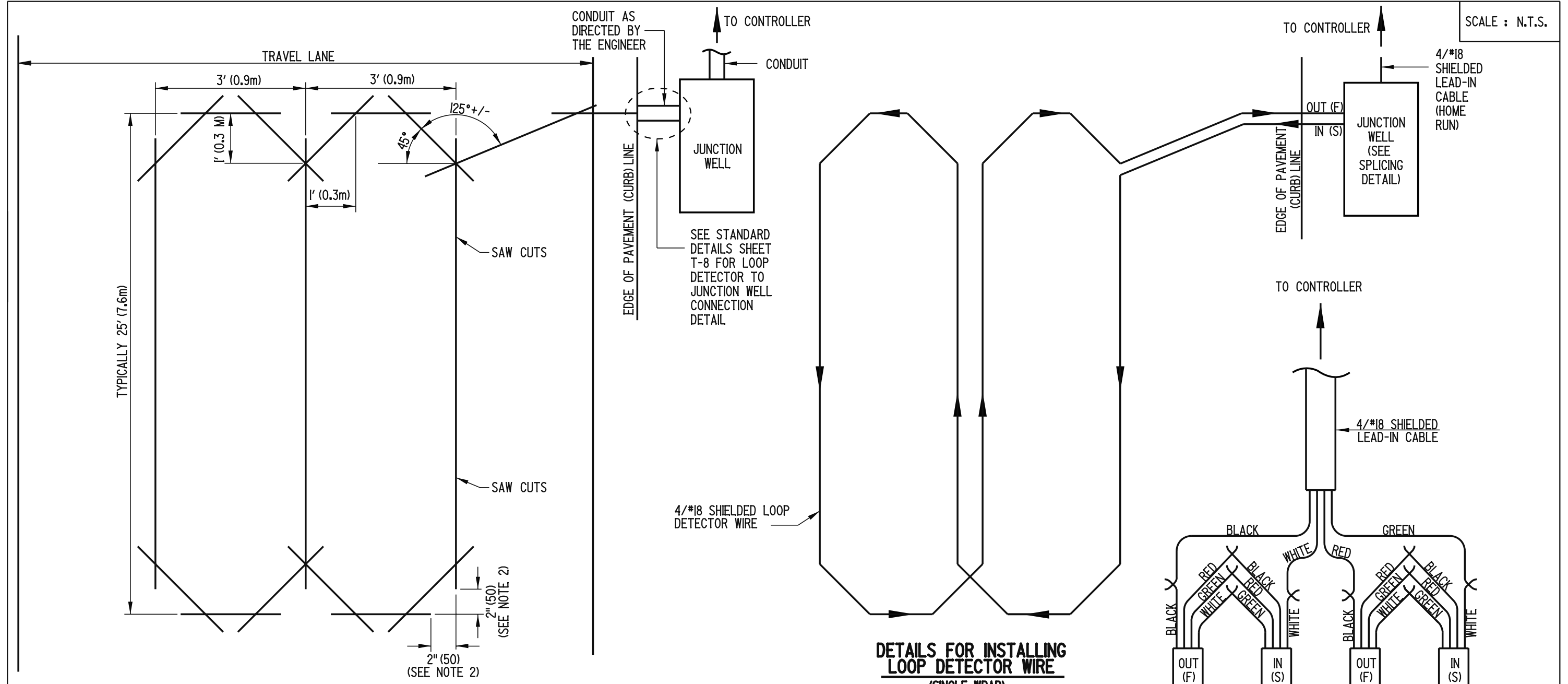
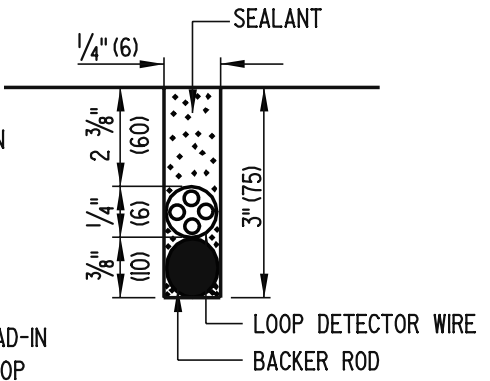


SCALE : N.T.S.

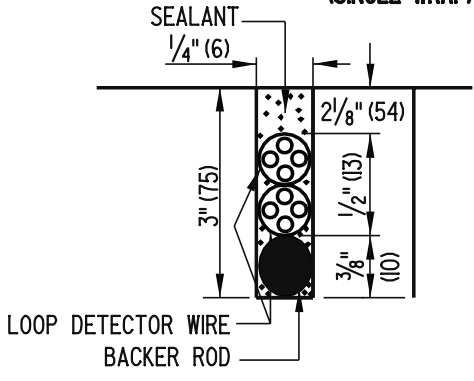


WIRE SLOT CONSTRUCTION

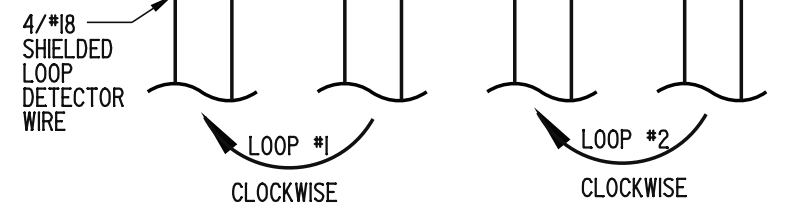
- NOTES:**
- 1). SAW CUTS FOR WIRE SLOT CONSTRUCTION SHALL BE EXTENDED BEYOND THE CORNERS SO THAT THE SLOT IS FULL DEPTH AT TURN POINTS. A FORTY-FIVE (45) DEGREE ANGLE SHALL BE CUT 1' (0.3m) BACK FROM THE POINT OF THE EXTENDED CORNER.
 - 2). THE LONGITUDINAL / TRANSVERSE CUT SHALL BE STOPPED APPROXIMATELY 2" (50) FROM THE CORNER TO PREVENT THE TRIANGULAR PORTION OF THE PAVEMENT FROM BREAKING.
 - 3). A MAXIMUM OF TWO LOOP DETECTORS CAN BE SPLICED TO ONE LEAD-IN CABLE. THE DETAIL ILLUSTRATES THE METHOD OF SPLICING TWO LOOP DETECTORS (LOOP #1 AND LOOP #2) TO A LEAD-IN CABLE.
 - 4). LOOP DETECTOR SHALL BE CENTERED IN TRAVEL LANE.




SECTION A - A



SECTION B - B



SPlicing DETAIL (SEE NOTE 3)

 DELAWARE DEPARTMENT OF TRANSPORTATION	TYPE #2 LOOP DETECTOR		APPROVED <i>Carolann Wick</i> 12/5/05 <small>CHIEF ENGINEER DATE</small>
	STANDARD NO. T-10 (2005)	SHT. 1 OF 1	RECOMMENDED <i>James M. O'Brien</i> 11/29/05 <small>DESIGN ENGINEER DATE</small>