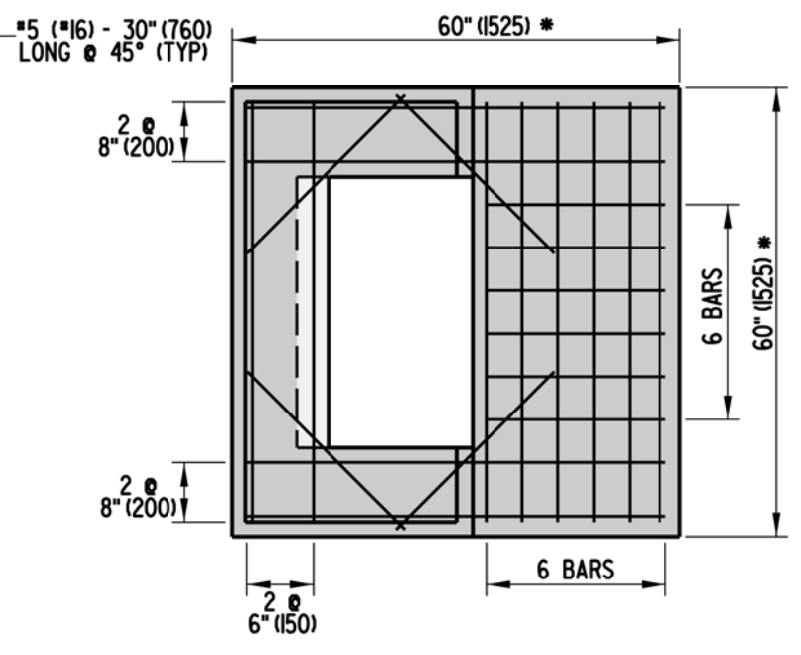
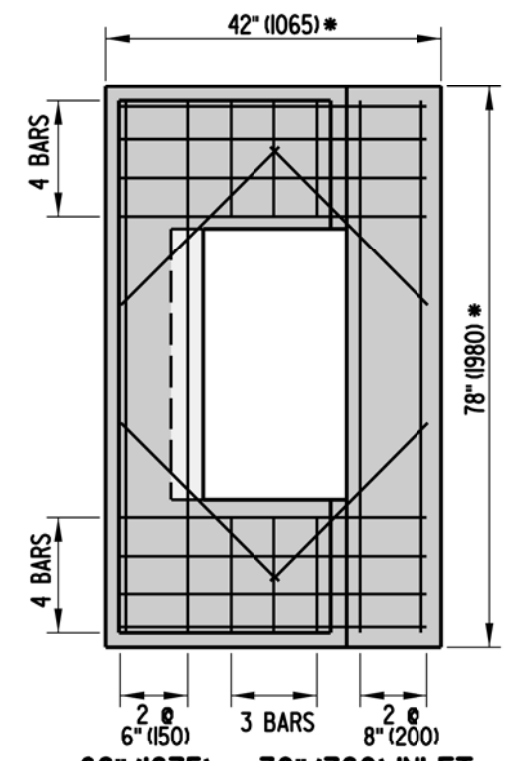


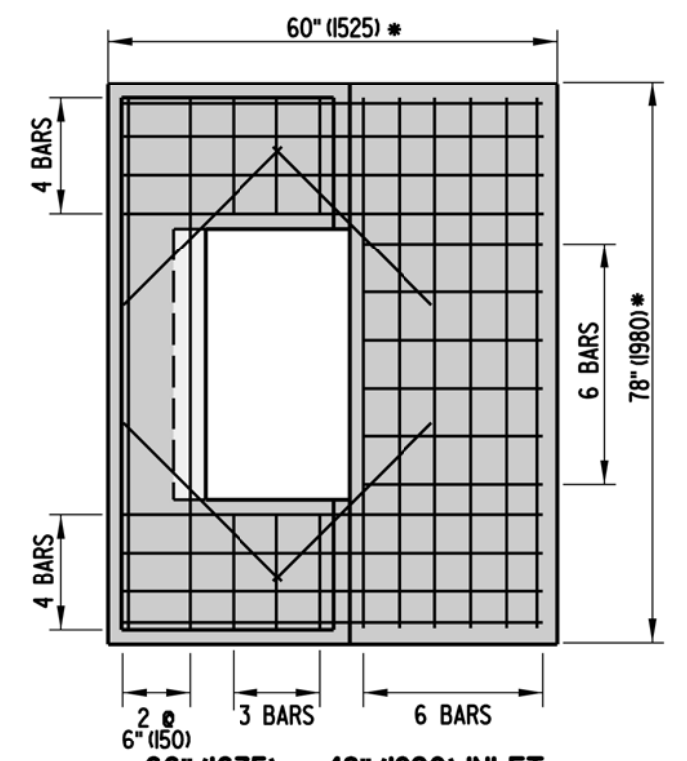
48" (1220) x 30" (760) INLET



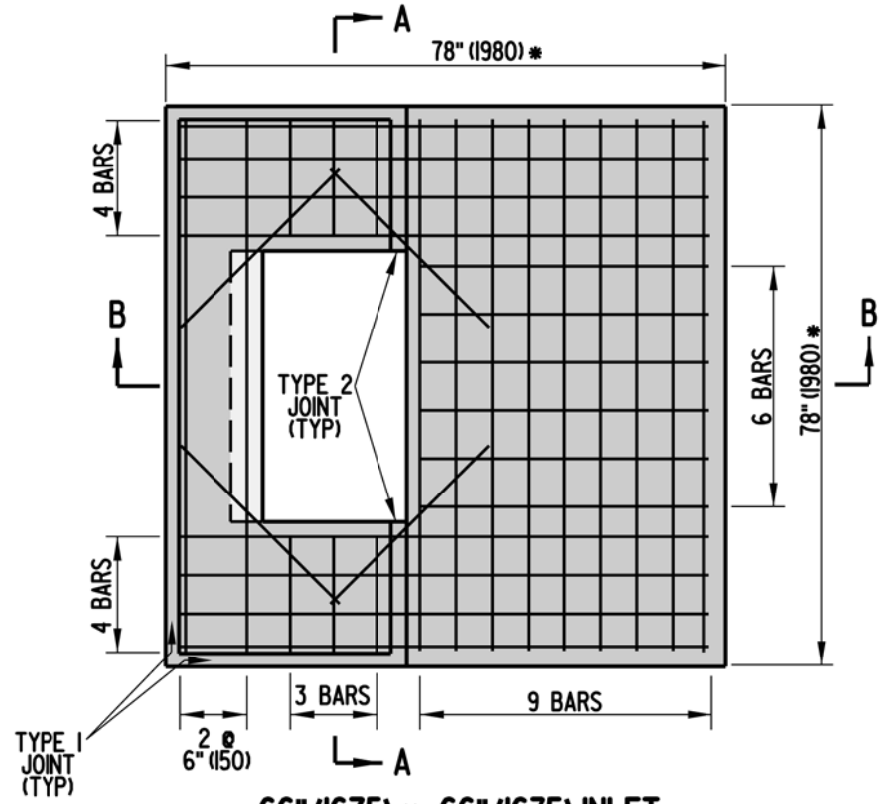
48" (1220) x 48" (1220) INLET



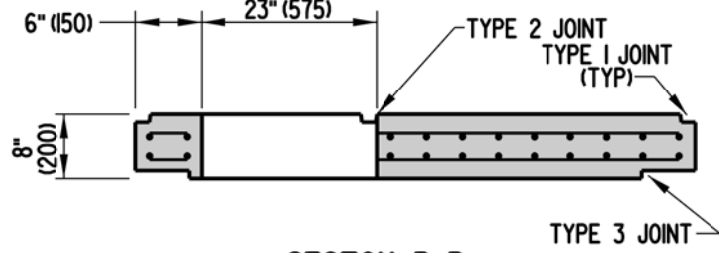
66" (1675) x 30" (760) INLET



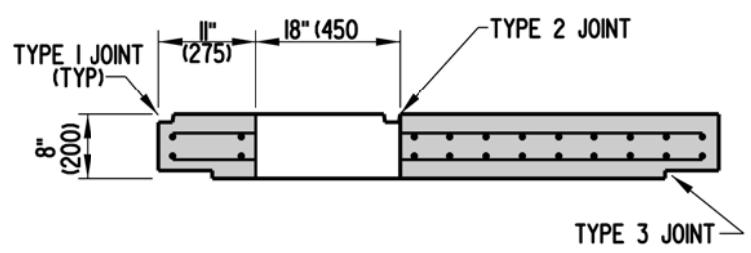
66" (1675) x 48" (1220) INLET



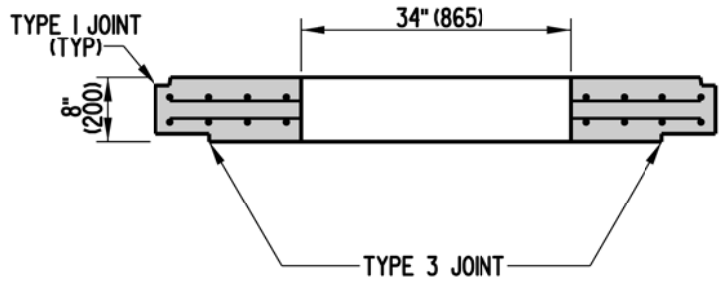
66" (1675) x 66" (1675) INLET



SECTION B-B FOR TYPE B TOP UNITS



SECTION B-B FOR TYPES A, C, D, & E TOP UNITS



SECTION A-A

- NOTES :**
- 1). 5" (125) THROAT IS FOR TYPE B TOP UNIT ONLY.
 - 2). RELOCATE ENCROACHING REINFORCING BARS WHEN USING TYPE B UNIT.
 - 3). COVER SLABS SHALL BE PRE-CAST AND MUST BE SIZED TO FIT INLET BOX DIMENSIONS.
 - 4). ALL BARS ARE TO BE #5 (#16) SPACED @ 6" (150) ± UNLESS NOTED OTHERWISE. TOP REINFORCEMENT SHALL BE 0.11 IN² (70 mm²) HORIZONTAL REINFORCEMENT PER FOOT IN BOTH DIRECTIONS.
 - 5). MINIMUM BAR COVER = 1 1/2" (38)
- * - DIMENSIONS TO MATCH OUTSIDE TO OUTSIDE DIMENSIONS OF BOX.