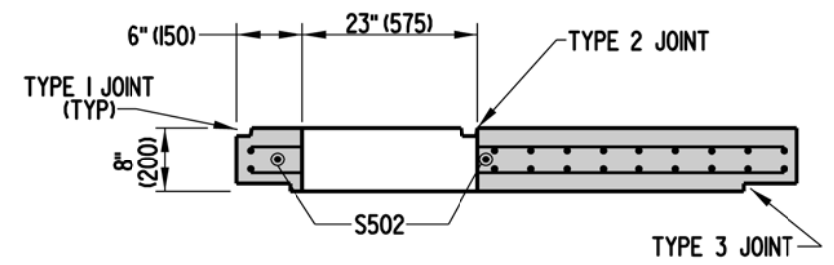


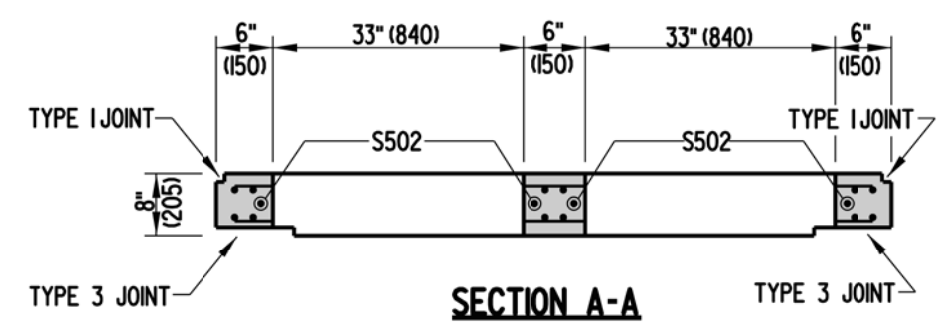
72" (1830) x 72" (1830) INLET

72" (1830) x 48" (1220) INLET

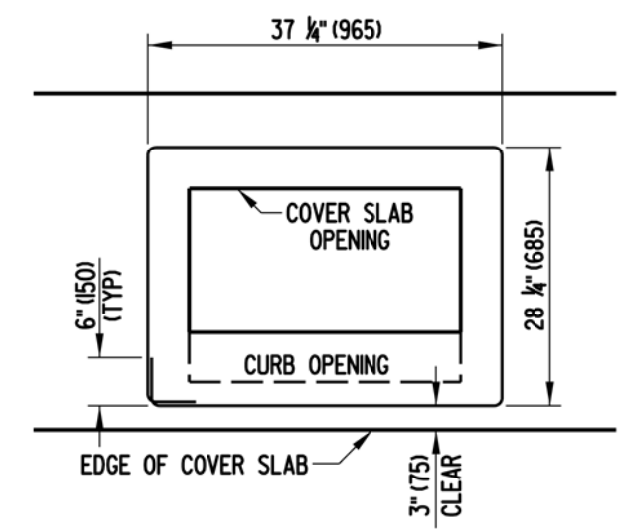
72" (1830) x 24" (610) INLET



**SECTION B-B
FOR TYPE B TOP UNITS**



SECTION A-A



S502 BENDING DIAGRAM

S502 IS NOT REQUIRED TO BE ONE CONTINUOUS BAR. IF MORE THAN ONE BAR IS USED, THERE MUST BE A 12" (300) OVERLAP BETWEEN BARS.

NOTES :

- 1). 5" (125) THROAT IS FOR TYPE B TOP UNITS ONLY.
- 2). RELOCATE ENCROACHING REINFORCING BARS WHEN USING TYPE B TOP UNITS
- 3). COVER SLABS ARE TO BE PRECAST AND MUST BE SIZED TO FIT INLET BOX DIMENSIONS.
- 4). ALL BARS ARE TO BE #5 (#16) SPACED @ 6" (150)± UNLESS NOTED OTHERWISE. TOP REINFORCEMENTS SHALL BE 0.11 IN² (70 mm²) MIN. HORIZONTAL REINFORCEMENT PER FOOT IN BOTH DIRECTIONS.
- 5). MINIMUM BAR COVER = 1 1/2" (38).