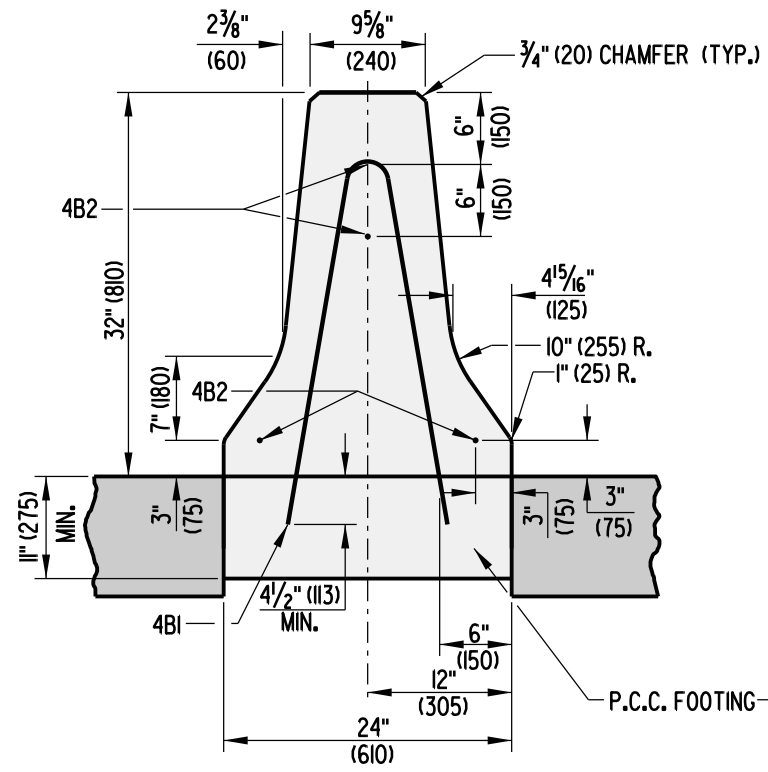
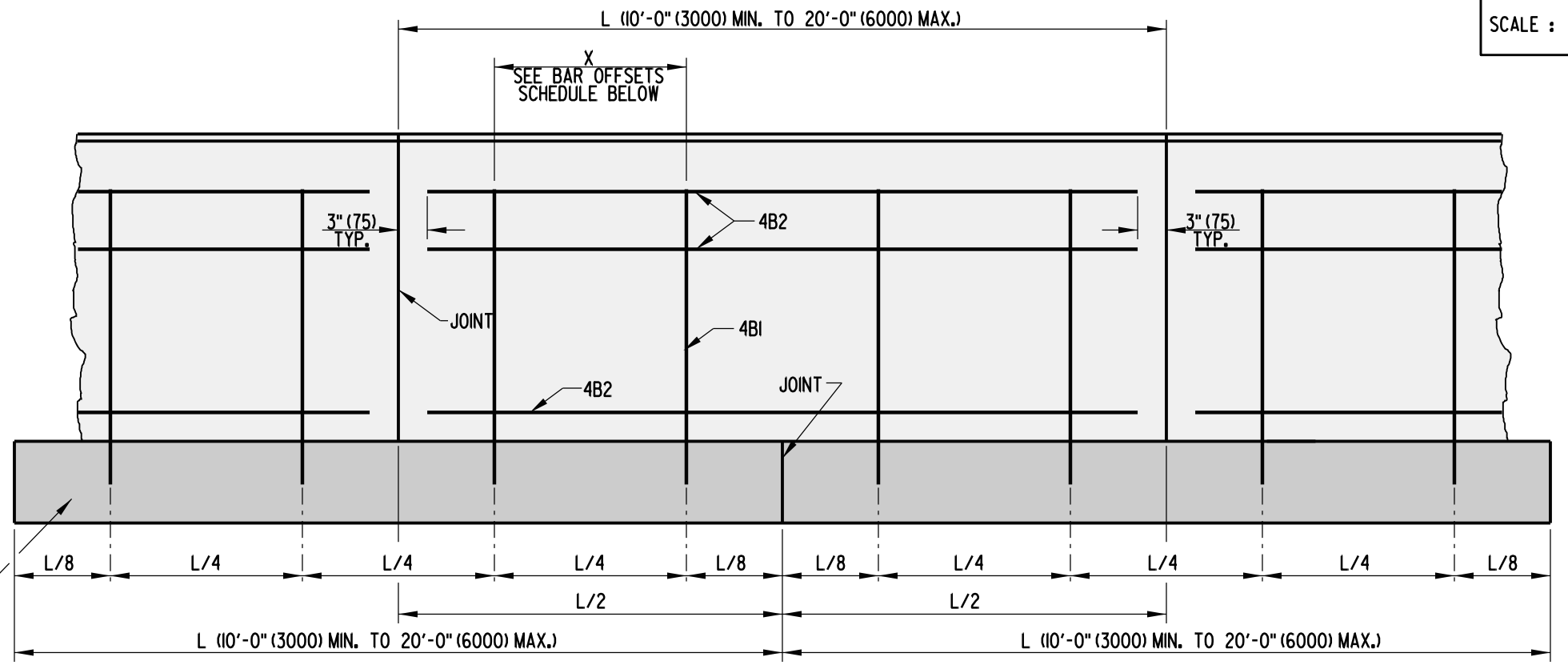


SCALE : N.T.S.

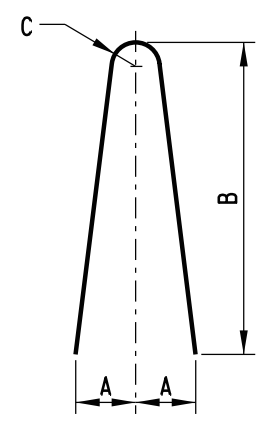


**SECTION**



**ELEVATION**

**TYPICAL CAST-IN-PLACE OR SLIP-FORM CONSTRUCTION**



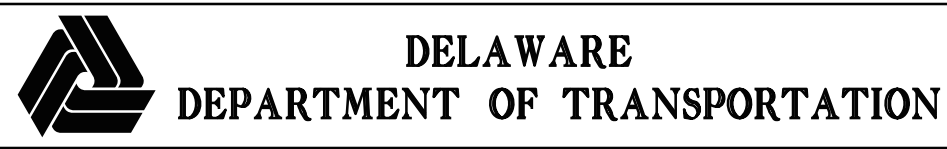
**TYPE 'I' BAR**

BAR OFFSETS		
NOMINAL LENGTH OF BARRIER SECTION (L)	X	NO. REQ'D FOR EACH BARRIER SECTION
20' (6000)	5' - 0" (1500)	4
18' (5500)	4' - 6" (1350)	4
16' (5000)	4' - 0" (1200)	4
14' (4500)	3' - 6" (1050)	4
12' (4000)	3' - 0" (900)	4
10' (3000)	2' - 6" (750)	4

BAR LIST							
MARK	SIZE	NUMBER IN EACH SECTION	LENGTH	TYPE	A	B	C
4B1	4 (I3)	**	5'-4" (1625)	I	7" (175)	30 1/2" (775)	2" (50)
4B2	4 (I3)	4	*	STR.	N/A	N/A	N/A

\* THE LENGTH OF BAR 4B2 SHALL BE 6" (150) SHORTER IN LENGTH THAN THE NOMINAL SIZE OF THE BARRIER IN WHICH IT IS USED.  
 \*\* SEE "BAR OFFSETS" CHART ON THIS SHEET FOR MORE INFORMATION.

NOTES: 1). CONCRETE CLEAR COVER FOR REINFORCING BARS SHALL BE 1/2" (40) MIN.  
 2). BARS SHALL BE CUT AT EVERY JOINT IF MADE USING CONTINUOUS SLIP-FORM CONSTRUCTION.



**32" (960) CONCRETE SAFETY BARRIER (F SHAPE)**  
 STANDARD NO. B-14 (2009) SHT. 1 OF 4

**APPROVED** SIGNATURE ON FILE DATE 01/19/2010  
 CHIEF ENGINEER  
**RECOMMENDED** SIGNATURE ON FILE DATE 01/14/2010  
 DESIGN ENGINEER