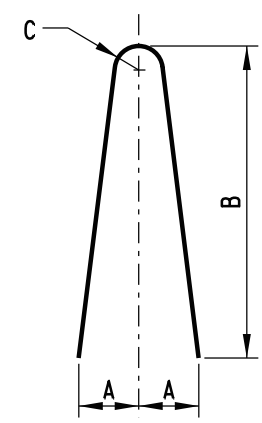


**SECTION**

**ELEVATION**



**TYPE 'I' BAR**

BAR OFFSETS	
NOMINAL LENGTH OF BARRIER SECTION (L)	NO. REQ'D FOR EACH BARRIER SECTION
20' (6000)	13
18' (5500)	12
16' (5000)	10
14' (4500)	9
12' (4000)	8
10' (3000)	6

BAR LIST							
MARK	SIZE	NUMBER IN EACH SECTION	LENGTH	TYPE	A	B	C
4B1	4 (I3)	**	7'-6" (2286)	I	6" (150)	44" (1118)	2" (50)
4B2	4 (I3)	7	*	STR.	N/A	N/A	N/A

\* THE LENGTH OF BAR 4B2 SHALL BE 6" (150) SHORTER IN LENGTH THAN THE NOMINAL SIZE OF THE BARRIER IN WHICH IT IS USED.  
 \*\* SEE "BAR OFFSETS" CHART ON THIS SHEET FOR MORE INFORMATION.

**TYPICAL CAST-IN-PLACE OR SLIP-FORM CONSTRUCTION**

NOTES: 1). CONCRETE CLEAR COVER FOR REINFORCING BARS SHALL BE 1/2" (40) MIN.  
 2). BARS SHALL BE CUT AT EVERY JOINT IF MADE USING CONTINUOUS SLIP-FORM CONSTRUCTION.