

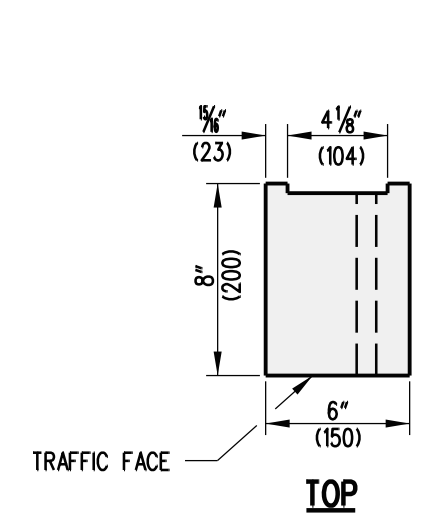
W6x9 (W150x13.5)

**SIDE**

**FRONT**

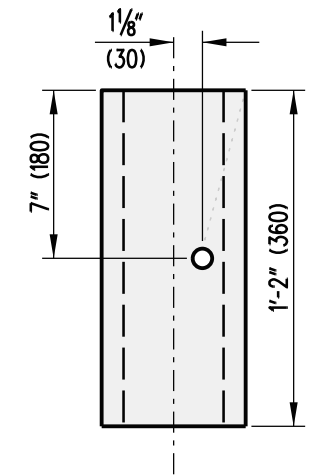
2

**POST**



TRAFFIC FACE

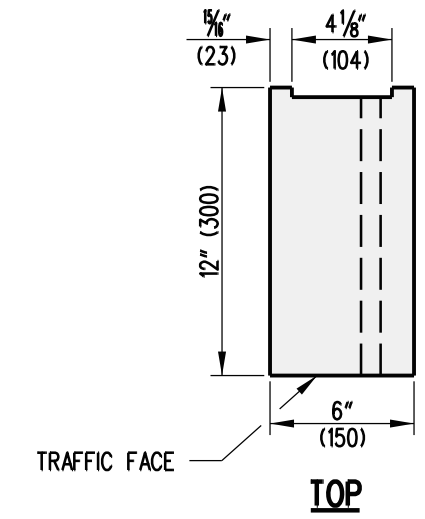
**TOP**



**FRONT**

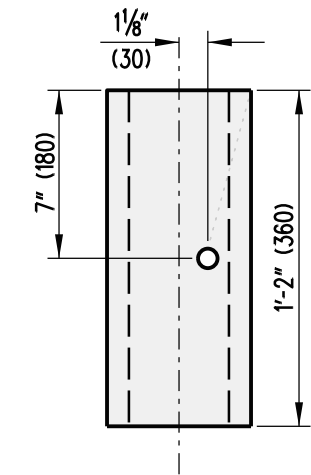
**OFFSET BLOCK, TYPE 27**

3B



TRAFFIC FACE

**TOP**



**FRONT**

**OFFSET BLOCK, TYPE 31**

3A

**W-BEAM STEEL POST AND OFFSET BLOCK**

**NOTE:**

- 1). ALL HOLES SHALL BE 1/4" (20) DIA. BOLT HOLE PATTERN IS SYMMETRICAL WITH RESPECT TO THE VERTICAL AXIS OF THE POST.
- 2). WHERE CONDITIONS REQUIRE, ALTERNATE POST LENGTHS IN INCREMENTS OF 6" (150) MAY BE USED.
- 3). THE RUB RAIL HOLE OFFSET DISTANCE IS 12" (300) FOR GUARDRAIL TO BARRIER CONNECTION, TYPE 1-27 AND 1-31, 1'-2" (360) FOR GUARDRAIL TO BARRIER CONNECTION, TYPE 2-27, AND 1'-6" (460) FOR GUARDRAIL TO BARRIER CONNECTION, TYPE 2-31.

**DELAWARE**  
**DEPARTMENT OF TRANSPORTATION**

<b>HARDWARE</b>			
<b>STANDARD NO.</b>	<b>B-13 (2010)</b>	<b>SHT.</b>	<b>2 OF 10</b>

<b>APPROVED</b>	SIGNATURE ON FILE	12/28/2010
	CHIEF ENGINEER	DATE
<b>RECOMMENDED</b>	SIGNATURE ON FILE	12/27/2010
	DESIGN ENGINEER	DATE