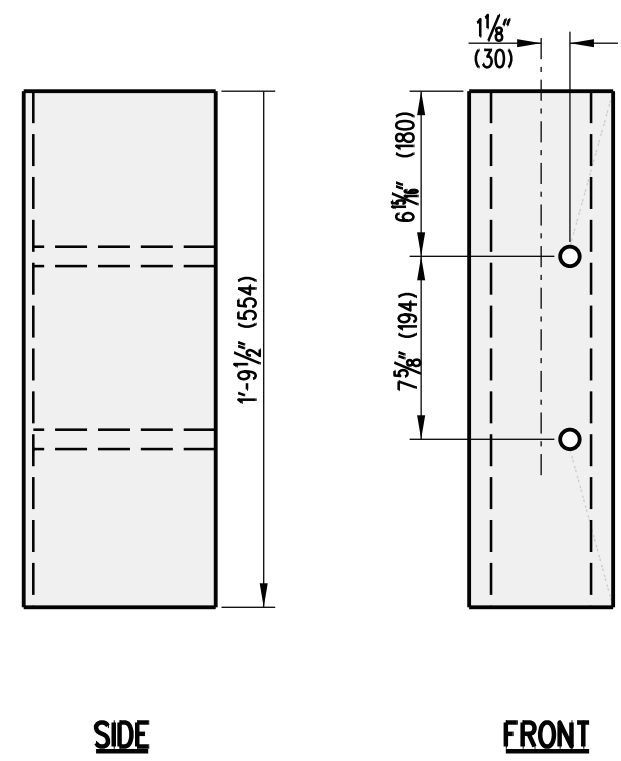
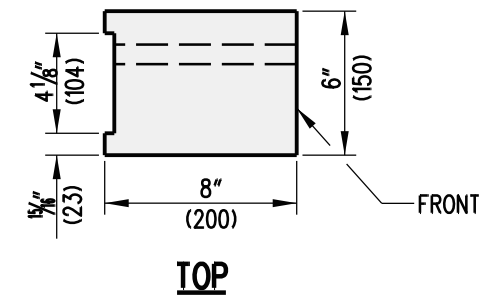


NOTE:
WHERE CONDITIONS REQUIRE,
USE ALTERNATE LENGTHS IN
INCREMENTS OF 6" (150)



OFFSET BLOCK

NOTE:
ALL HOLES SHALL BE 1/4" (20) DIA. BOLT HOLE
PATTERN IS SYMMETRICAL WITH RESPECT TO THE
VERTICAL AXIS OF THE POST.

POST 2

THRIE BEAM STEEL POST AND OFFSET BLOCK