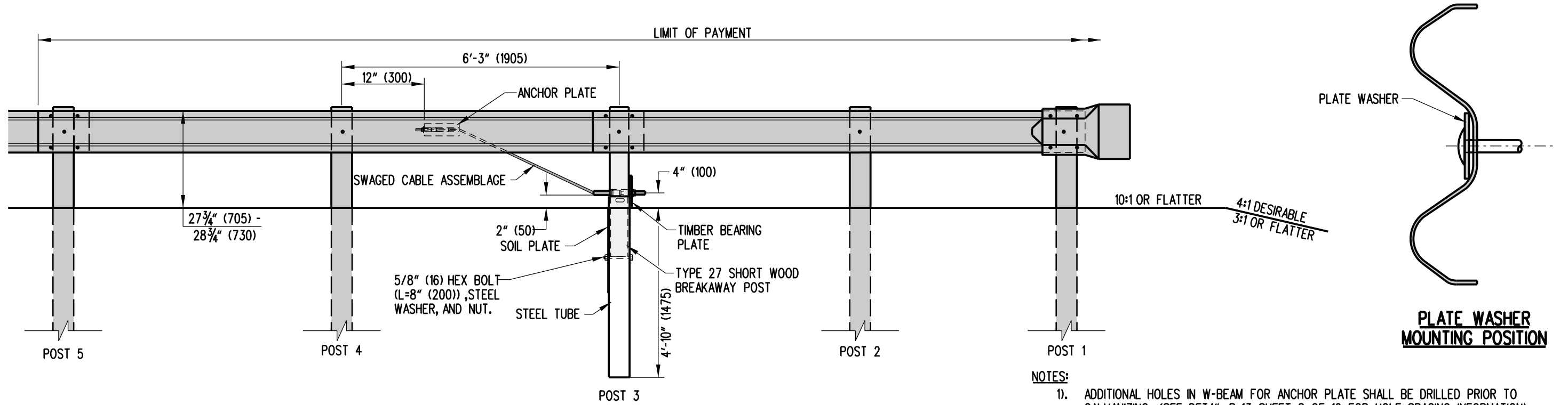
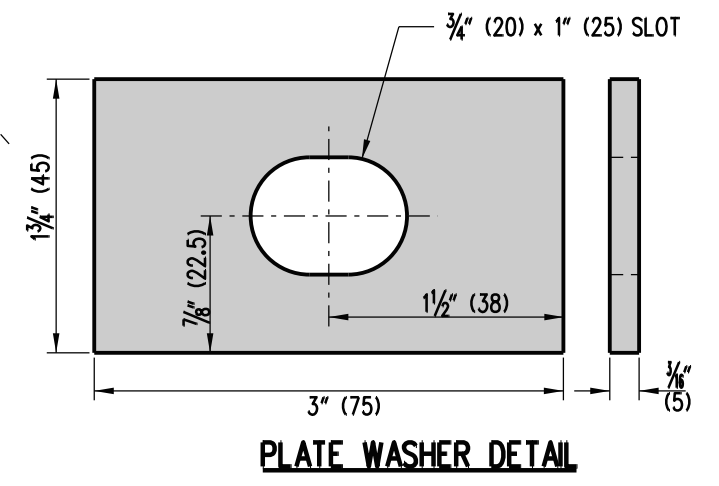


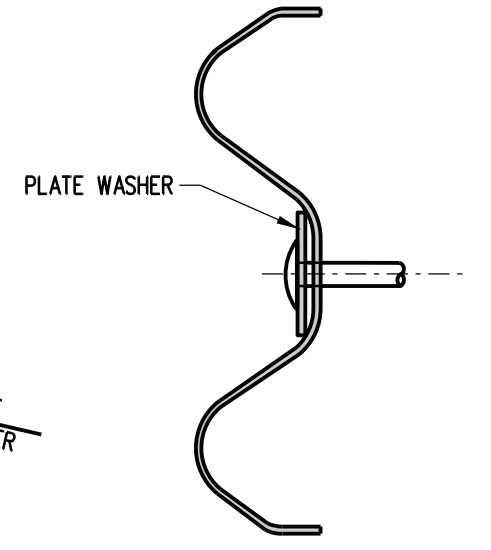
**PLAN**



**ELEVATION**



**PLATE WASHER DETAIL**



**PLATE WASHER MOUNTING POSITION**

**NOTES:**

- 1). ADDITIONAL HOLES IN W-BEAM FOR ANCHOR PLATE SHALL BE DRILLED PRIOR TO GALVANIZING. (SEE DETAIL B-13, SHEET 8 OF 10 FOR HOLE SPACING INFORMATION).
- 2). CONTRACTOR HAS THE OPTION OF USING A 6'-0" (1830) STEEL TUBE WITHOUT A SOIL PLATE OR A 5'-0" (1525) STEEL TUBE WITH A SOIL PLATE.
- 3). PLATE WASHERS SHALL BE INSTALLED AT POSTS 3 & 4 ONLY.
- 4). THIS END TREATMENT SHALL ONLY BE USED ON TRAVEL WAYS WITH A POSTED SPEED LIMIT OF 40 MPH (64 KM/H) OR LESS.

**DELAWARE**  
**DEPARTMENT OF TRANSPORTATION**

**GUARDRAIL END TREATMENT, TYPE 4-27**

STANDARD NO. **B-17 (2010)** SHT. **1** OF **1**

**APPROVED** SIGNATURE ON FILE \_\_\_\_\_ 12/28/2010  
CHIEF ENGINEER DATE

**RECOMMENDED** SIGNATURE ON FILE \_\_\_\_\_ 12/27/2010  
DESIGN ENGINEER DATE